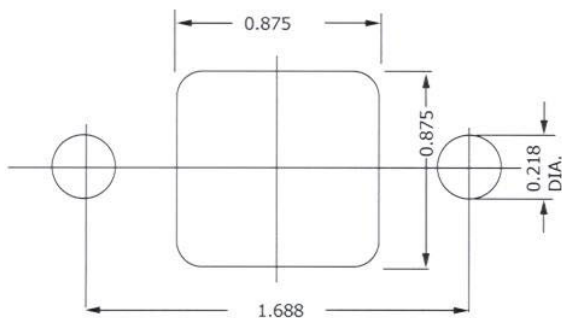


CONTACT DATA	CHASSIS MOUNTING DATA				
	CHASSIS T-HIC KNESSES	X-DIMENSION	BELOW CHASSIS	BELOW CHASSIS	ABOVE CHASSIS
 SOLDER CUP	$\frac{1}{16}$.12		HRB-1	HRB-2
	$\frac{3}{32}$.09		HRB-31	HRB-32
	$\frac{1}{8}$.06	HRB-41		HRB-42
 EYELET	$\frac{1}{16}$.12		HRB-5	HRB-6
	$\frac{3}{32}$.09		HRB-35	HRB-36
	$\frac{1}{8}$.06	HRB-45		HRB-46
 TURRET	$\frac{1}{16}$.12		HRB-3	HRB-4
	$\frac{3}{32}$.09		HRB-33	HRB-34
	$\frac{1}{8}$.06	HRB-43		HRB-44
 TAPER PIN	$\frac{1}{16}$.12		HRB-7	HRB-8
	$\frac{3}{32}$.09		HRB-37	HRB-38
	$\frac{1}{8}$.06	HRB-47		HRB-48



RECOMMENDED CHASSIS CUT-OUT

ELECTRICAL

- Wire Size:
 - Solder Cup Type One #20 AWG
 - Turret Type Two #20 AWG or Three #22 AWG
 - Eyelet Type Two #20 AWG or Three #22 AWG
 - Taper Type One AMP "37" Taper Receptacle
- Current Rating 7.5 Amperes
- Withstanding Voltage:
 - Contact to Contact Sea Level 2700 VRMS Minimum
 - Contact to Ground Sea Level 5400 VRMS Minimum
 - Contact to Contact 70,000 Ft.560 VRMS Minimum
 - Contact to Ground 70,000 Ft.975 VRMS Minimum

MECHANICAL

- Creepage Between Contacts 0.16 Minimum
- Air Space Between Contacts 0.09 Minimum
- Contacts to Accept 0.040 ± 0.001 DIA. Pins

Contacts:

- Spring Temper Grade "A" Phosphor Bronze, or Heat Treated Beryllium Copper
- Gold Plated over Copper or Nickel Plate

Mounting Hardware:

- Special Studs, Screws, Lockwashers, and Nuts

Insulation Material:

- Choice of "MIL Approved" Thermosetting Insulations (See Page 45)

- Temperature Ratings: -65°C to +125°C
- Weight of Socket with Mountings: 0.96 oz.