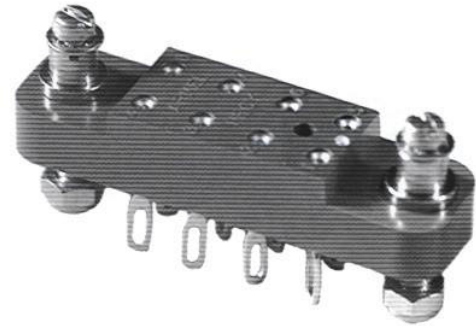
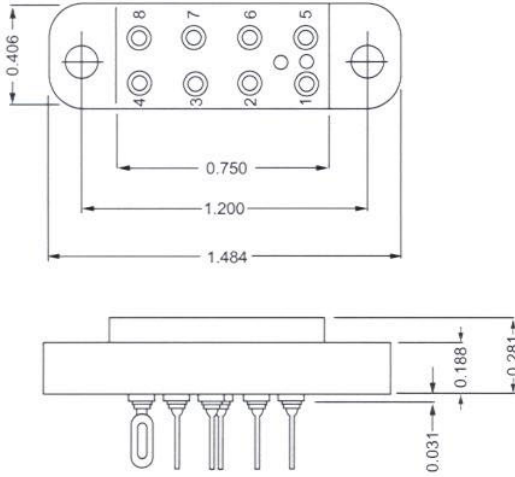




# HRCY SERIES



## ELECTRICAL

Wire Size:  
 Solder Cup Type.....One #20 AWG  
 Eyelet Type.....Two #20 AWG or  
 Three #22 AWG  
 Current Rating.....3 Amperes  
 Withstanding Voltage:  
 Contact to Contact Sea Level.....2700 VRMS Minimum  
 Contact to Ground Sea Level.....3300 VRMS Minimum  
 Contact to Contact 70,000 Ft.....560 VRMS Minimum  
 Contact to Ground 70,000 Ft.....675 VRMS Minimum

## MECHANICAL

Creepage Between Contacts.....0.17 Minimum  
 Air Space Between Contacts.....0.11 Minimum  
 Contacts to Accept 0.030 ± 0.001 DIA. Pins

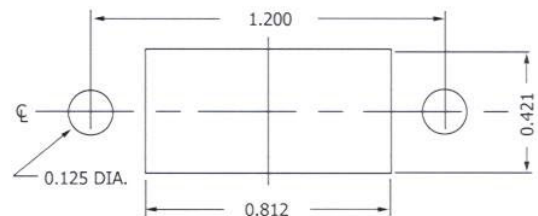
Contacts:  
 Spring Temper Grade "A" Phosphor Bronze or  
 Heat Treated Beryllium Copper  
 Gold Plated over Copper or Nickel Plate

Mounting Hardware:  
 Special Studs, Screws, Lockwashers, and Nuts

Insulation Material:  
 Choice of "MIL Approved" Thermosetting  
 Insulations (See Page 45)

Temperature Ratings: -65°C to +125°C  
 Weight of Socket with Mountings: 0.25 oz.

CONTACT DATA	CHASSIS MOUNTING DATA					
	CHASSIS THICKNESS	X-DIMENSION	BELOW CHASSIS	BELOW CHASSIS	ABOVE CHASSIS	
OPEN ENTRY	SOLDER CUP	3/16	.17	HRCY - 1	HRCY - 2	
		3/32	.14		HRCY - 31	HRCY - 32
		1/8	.12		HRCY - 41	HRCY - 42
ENTRY	EYELET	1/16	.17	HRCY - 5	HRCY - 6	
		3/32	.14		HRCY - 35	HRCY - 36
		1/8	.12		HRCY - 45	HRCY - 46
CLOSED ENTRY	STRAIGHT	3/16			HRCY - 4	
		3/32				
		1/8				
CLOSED ENTRY	SOLDER CUP	3/16	.17	HRCY - 1K	HRCY - 2K	
		3/32	.14		HRCY - 31K	HRCY - 32K
		1/8	.12		HRCY - 41K	HRCY - 42K
ENTRY	EYELET	1/16	.17	HRCY - 5K	HRCY - 6K	
		3/32	.14		HRCY - 35K	HRCY - 36K
		1/8	.12		HRCY - 45K	HRCY - 46K
CLOSED ENTRY	STRAIGHT	1/16			HRCY - 4K	
		3/32				
		1/8				



RECOMMENDED CHASSIS CUT-OUT