

ELECTRICAL

- Size: One #20 AWG
- Solder Cup Type: Two #20 AWG or Three #22 AWG
- Turret Type: Two #20 AWG or Three #22 AWG
- Eyelet Type: Two #20 AWG or Three #22 AWG
- Taper Type: One AMP "37" Taper Receptacle
- Current Rating: 7.5 Amperes
- Withstanding Voltage:
 - Contact to Contact Sea Level: 1800 VRMS Minimum
 - Contact to Ground Sea Level: 3300 VRMS Minimum
 - Contact to Contact 70,000 Ft.: 450 VRMS Minimum
 - Contact to Ground 70,000 Ft.: 675 VRMS Minimum

MECHANICAL

- Creepage Between Contacts: 0.12 Minimum
- Air Space Between Contacts: 0.06 Minimum
- Contacts to Accept 0.040 ± 0.001 DIA. Pins

Contacts:

- Spring Temper Grade "A" Phosphor Bronze, or Heat Treated Beryllium Copper
- Gold Plated over Copper or Nickel Plate

Mounting Hardware:


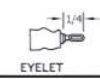
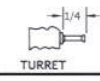

- Special Studs, Screws, Lockwashers, and Nuts

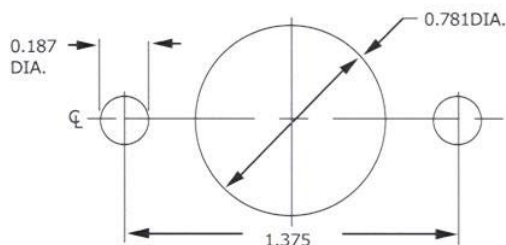
Insulation Material:

- Choice of "MIL Approved" Thermosetting Insulations (See Page 45)

Temperature Ratings: -65°C to +125°C

Weight of Socket with Mountings: 0.70 oz.

CONTACT DATA	CHASSIS MOUNTING DATA		
	CHASSIS THICKNESS	X-DIMENSION	
 SOLDER CUP	$\frac{1}{16}$.28	HRD-1
	$\frac{3}{32}$.25	HRD-31
	$\frac{1}{8}$.25	HRD-41
 EYELET	$\frac{1}{16}$.28	HRD-5
	$\frac{3}{32}$.25	HRD-35
	$\frac{1}{8}$.25	HRD-45
 TURRET	$\frac{1}{16}$.28	HRD-3
	$\frac{3}{32}$.25	HRD-33
	$\frac{1}{8}$.25	HRD-43
 TAPER PIN	$\frac{1}{16}$.28	HRD-7
	$\frac{3}{32}$.25	HRD-37
	$\frac{1}{8}$.25	HRD-47



RECOMMENDED CHASSIS CUT-OUT