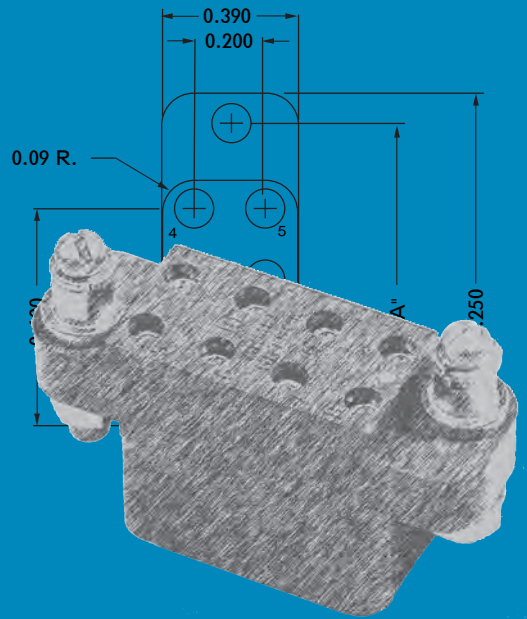
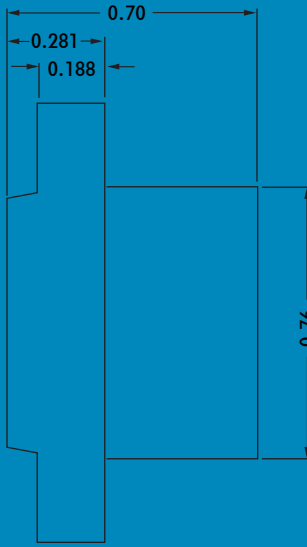
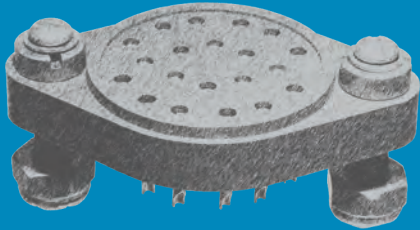
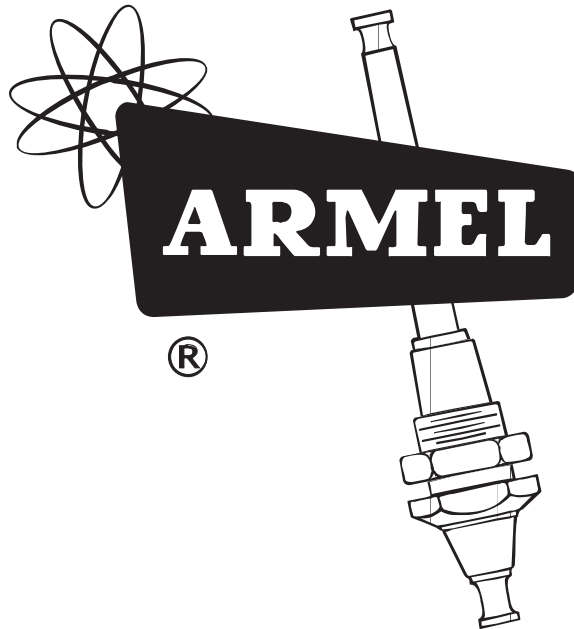


Closed Entry Contact
No. 1007010-1



relay sockets





RELAY SOCKET INDEX

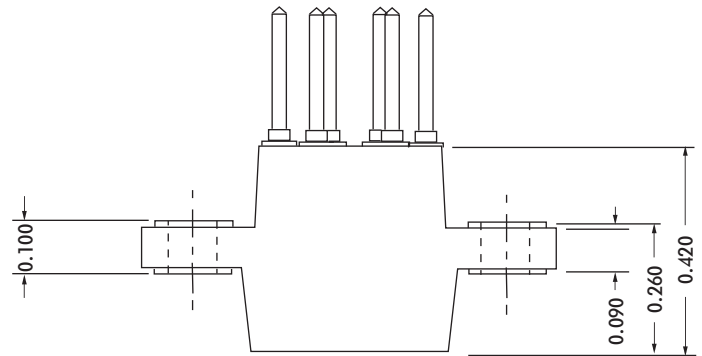
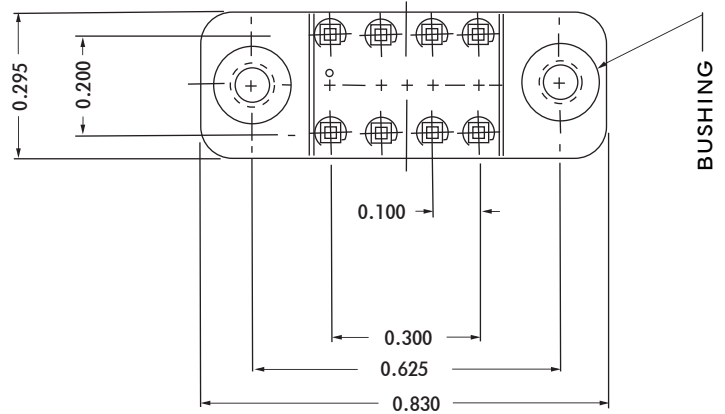
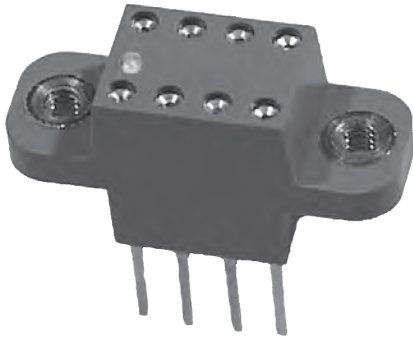
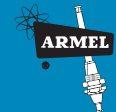
ARMEL RELAY SOCKETS are designed to attain high reliability as a primary objective based on the parameters delineated in the MIL-S-12883 Specification. This design objective is accomplished and maintained by the stringent quality control procedures maintained by Armel Electronics, Inc.

When mated with relays produced by some of the leading relay manufacturers, these sockets attain a confidence level consistent with the most exacting specifications and systems requirements.

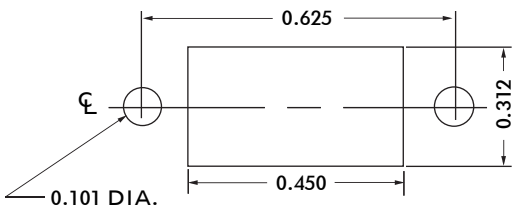
These sockets are available with a choice of thermo-setting insulations in which free-floating, precision-maintained contacts are securely contained. Variations in contact materials and platings, in addition to the mounting hardware materials and finishes, are available for special applications.

RELAY STYLE	SOCKET STYLE	PAGE	RELAY STYLE	SOCKET STYLE	PAGE		
ALPHA NUMERICAL DISPLAY SOCKETS	HAN	1	MINIATURE 2PDT	HRE	25		
	HAND	2		HRG	26		
CRYSTAL CAN 2PDT	HRK	3		HRW	27		
	HRKA	4		HRD	28		
	HRKB	5		HRFA	29		
	HRR	6		HRFB	30		
	HRC	7		HF	31		
	HRCY	8		HR	32		
	HRCZ	9		4PDT	HRB	33	
	HRCB	10			HF	31	
	HRCW	11			HR	32	
	HRUA	12			HRGD	34	
CRIMP REMOVABLE TYPE CONTACTS	HRT	13		6PDT	HF	31	
	HRTA	14			HR	32	
	HRTS	15			HRS	36	
	4PDT	HRTS-CK	16		HRSA	37	
		HRCC	17		HRSB	38	
CRIMP REMOVABLE TYPE CONTACTS 4 PDT	HRCC-CK	18	HRSE		39		
		HRCM	19		HRSS	40	
		HRCE	20		HRL	41	
		HRCP	21		MINIATURE POWER 4PDT	HRH	42
		6PDT	HRCK			22	HRHA
CRYSTAL CAN POWER 2PDT	HRCL		23	HRHF		44	
	HRCF	24	HRP	45			
			HRY	46			

HAN SERIES



CONTACT DATA		CHASSIS MOUNTING DATA		
		X-DIMENSION	CLEARANCE HOLE FOR NO.2 SCREW	NO.2 -56 THREAD
OPEN ENTRY	SOLDER CUP 3/16			
	EYELET 1/4			
	STRAIGHT 3/16			
CLOSED ENTRY	WIRE WRAP 0.025 SQ. X	.24	HAN-13KLT3	HAN-518KLT3
	EYELET 1/4			
	STRAIGHT 1/8			



RECOMMENDED CHASSIS CUT-OUT

ELECTRICAL

Contact Rating 3 Amperes

Withstanding Voltage:

- Contact to Contact Sea Level. 1000 VRMS Minimum
- Contact to Ground Sea Level. 1800 VRMS Minimum
- Contact to Contact 70,000 Ft. 300 VRMS Minimum
- Contact to Ground 70,000 Ft. 450 VRMS Minimum

MECHANICAL

- Creepage Between Contacts 0.02 Minimum
- Air Space Between Contacts 0.02 Minimum
- Contacts to Accept 0.020 ± 0.001 DIA. Pins

Contacts:

- Heat Treated Beryllium Copper
- Gold Plated over Copper or Nickel Plate

Mounting Hardware:

- Threaded or Clearance Hole Mounting Bushings

Insulation Material:

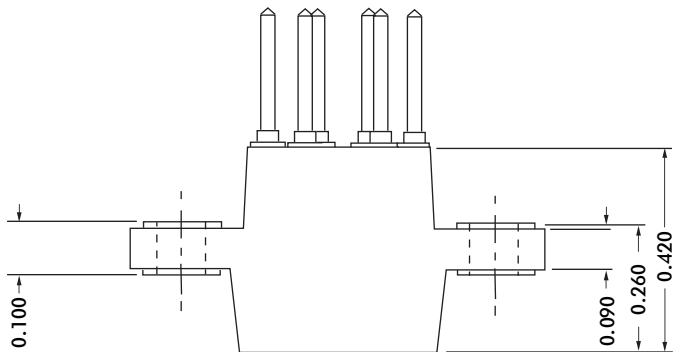
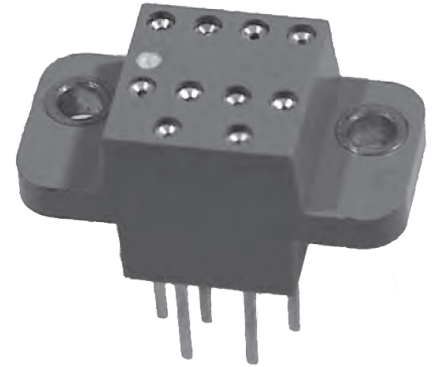
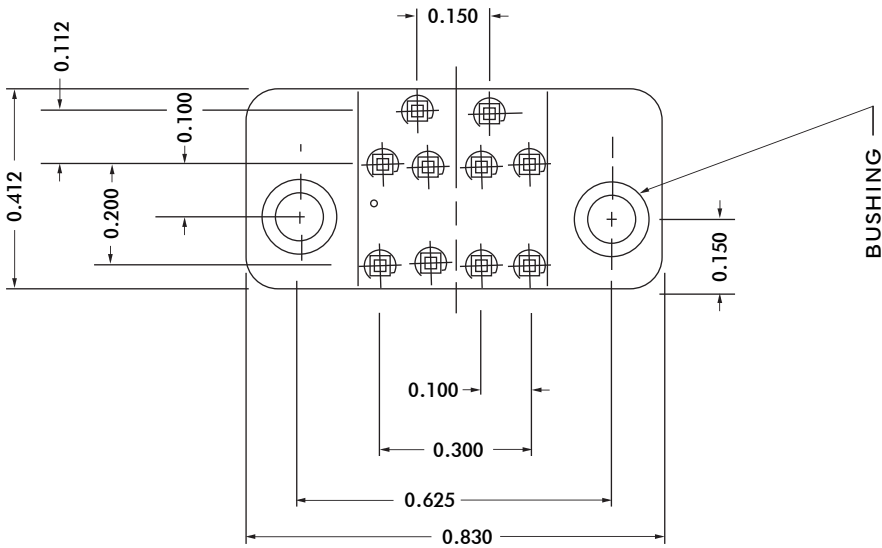
- Choice of "MIL Approved" Thermosetting Insulations (See Page 45)

Temperature Ratings: -65°C to +125°C

Weight of Socket with Mountings: 0.10 oz.



HAND SERIES



ELECTRICAL

Contact Rating 3 Amperes
 Withstanding Voltage:

- Contact to Contact Sea Level. . . 1000 VRMS Minimum
- Contact to Ground Sea Level. . . 1800 VRMS Minimum
- Contact to Contact 70,000 Ft. . . 300 VRMS Minimum
- Contact to Ground 70,000 Ft. . . 450 VRMS Minimum

MECHANICAL

Creepage Between Contacts 0.02 Minimum
 Air Space Between Contacts 0.02 Minimum
 Contacts to Accept 0.020 ± 0.001 DIA. Pins

Contacts:

Heat Treated Beryllium Copper
 Gold Plated over Copper or Nickel Plate

Mounting Hardware:

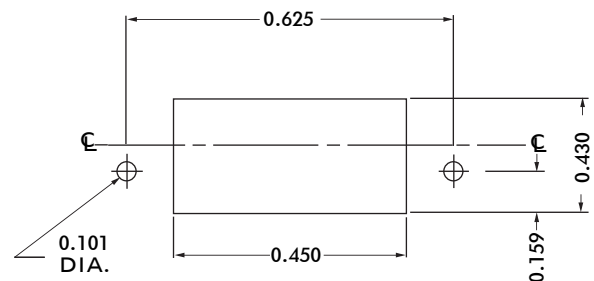
Threaded or Clearance Hole Mounting Bushings

Insulation Material:

Choice of "MIL Approved" Thermosetting
 Insulations (See Page 45)

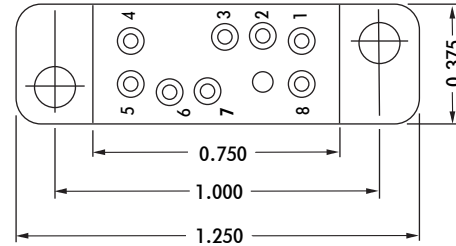
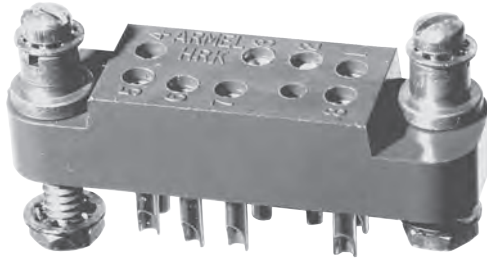
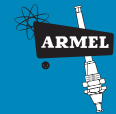
Temperature Ratings: -65°C to +125°C
 Weight of Socket with Mountings: 0.15 oz.

		CHASSIS MOUNTING DATA		
		CONTACT DATA	CLEARANCE HOLE FOR NO.2 SCREW	NO.2-56 THREAD
P O P U L A R I T Y	3/16			
	1/4			
	3/16			
C O M M E R C I A L I T Y	0.025 SQ. X	.24	HAND-13KLT3	HAND-518KLT3
	1/4			
	1/8			

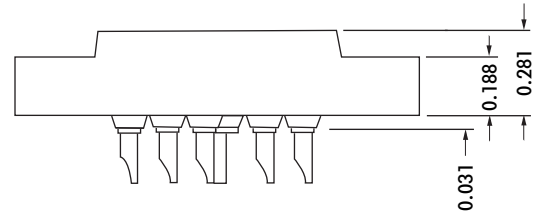


RECOMMENDED CHASSIS CUT-OUT

HRK SERIES



CONTACT DATA		CHASSIS MOUNTING DATA			
		CHASSIS THICKNESS	X-DIMENSION		
OPEN ENTRY	SOLDER CUP	1/16	.17	HRK - 1	HRK - 2
		3/32	.14	HRK - 31	HRK - 32
		1/8	.12	HRK - 41	HRK - 42
	EYELET	1/16	.17	HRK - 5	HRK - 6
		3/32	.14	HRK - 35	HRK - 36
		1/8	.12	HRK - 45	HRK - 46
	STRAIGHT	1/16			HRK - 4
		3/32			HRK - 34
		1/8			
CLOSED ENTRY	SOLDER CUP	1/16	.17	HRK - 1K	HRK - 2K
		3/32	.14	HRK - 31K	HRK - 32K
		1/8	.12	HRK - 41K	HRK - 42K
	EYELET	1/16	.17	HRK - 5K	HRK - 6K
		3/32	.14	HRK - 35K	HRK - 36K
		1/8	.12	HRK - 45K	HRK - 46K
	STRAIGHT	1/16			HRK - 4K
		3/32			
		1/8			



ELECTRICAL:

Wire Size:

- Solder Cup Type One #20 AWG
- Eyelet Type Two #20 AWG or Three #22 AWG

Current Rating 3 Amperes

Withstanding Voltage:

- Contact to Contact Sea Level 1000 VRMS Minimum
- Contact to Ground Sea Level 1800 VRMS Minimum
- Contact to Contact 70,000 Ft. 300 VRMS Minimum
- Contact to Ground 70,000 Ft. 450 VRMS Minimum

MECHANICAL:

- Creepage Between Contacts 0.09 Minimum
- Air Space Between Contacts 0.03 Minimum
- Contacts to Accept 0.030 ± 0.001 DIA. Pins

Contacts:

- Spring Temper Grade "A" Phosphor Bronze, or Heat Treated Beryllium Copper
- Gold Plated over Copper or Nickel Plate

Mounting Hardware:

- Special Studs, Screws, Lockwashers, and Nuts

Insulation Material:

- Choice of MIL Approved Thermosetting Insulations (See Page 45)

Temperature Ratings: -65°C to +125°C

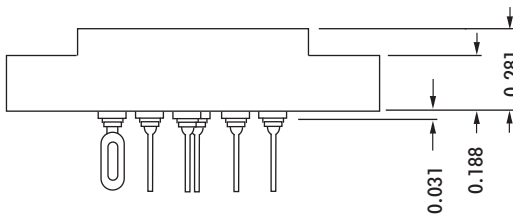
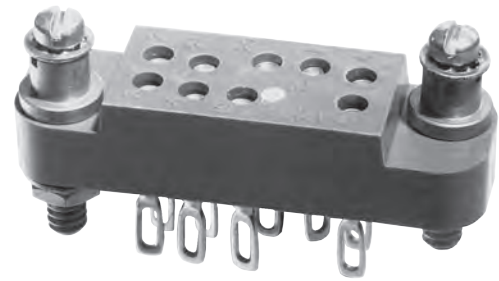
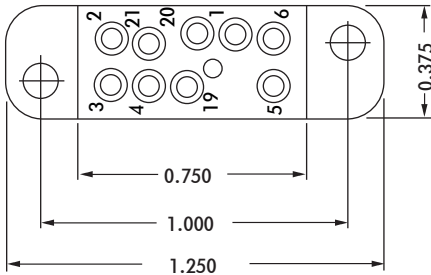
Weight of Socket with Mountings: 0.23 oz.



RECOMMENDED CHASSIS CUT-OUT



HRKA SERIES



ELECTRICAL

Wire Size:

- Solder Cup Type. One #20 AWG
- Eyelet Type. Two #20 AWG or
Three #22 AWG

Current Rating. 3 Amperes

Withstanding Voltage:

- Contact to Contact Sea Level 1000 VRMS Minimum
- Contact to Ground Sea Level 1800 VRMS Minimum
- Contact to Contact 70,000 Ft. 300 VRMS Minimum
- Contact to Ground 70,000 Ft. 450 VRMS Minimum

MECHANICAL

- Creepage Between Contacts. 0.09 Minimum
- Air Space Between Contacts. 0.03 Minimum
- Contacts to Accept 0.030 ± 0.001 DIA. Pins

Contacts:

- Spring Temper Grade "A" Phosphor Bronze, or
- Heat Treated Beryllium Copper
- Gold Plated over Copper or Nickel Plate

Mounting Hardware:

- Special Studs, Screws, Lockwashers, and Nuts

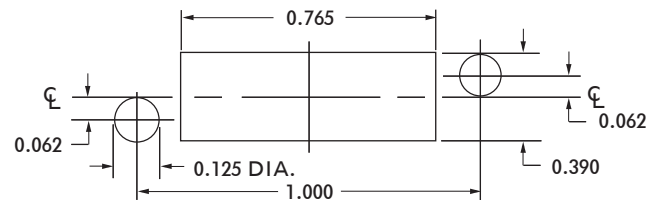
Insulation Material:

- Choice of **MIL Approved** Thermosetting
- Insulations (See Page 45)

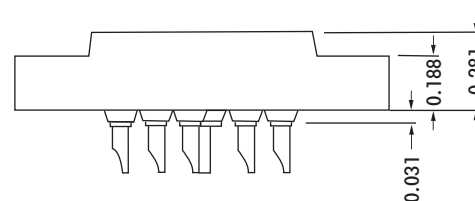
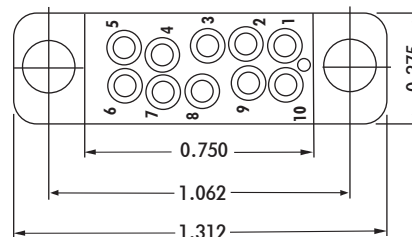
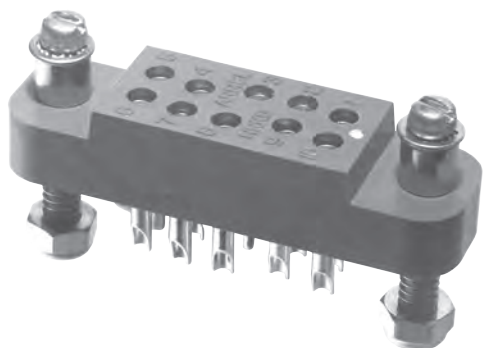
Temperature Ratings: -65°C to +125°C

Weight of Socket with Mountings: 0.24 oz.

CONTACT DATA	CHASSIS MOUNTING DATA				
	CHASSIS THICKNESS	X-DIMENSION	MOUNTING TYPE		
			BELOW CHASSIS	BELOW CHASSIS	ABOVE CHASSIS
 SOLDER CUP	1/16	.17	HRKA - 1		HRKA - 2
	3/32	.14		HRKA - 31	HRKA - 32
	1/8	.12		HRKA - 41	HRKA - 42
 EYELET	1/16	.17	HRKA - 5		HRKA - 6
	3/32	.14		HRKA - 35	HRKA - 36
	1/8	.12		HRKA - 45	HRKA - 46
 STRAIGHT	1/16				HRKA - 4
	3/32				
	1/8				



RECOMMENDED CHASSIS CUT-OUT



CONTACT DATA		CHASSIS MOUNTING DATA				
		CHASSIS THICKNESS	X-DIMENSION			
				BELOW CHASSIS	BELOW CHASSIS	ABOVE CHASSIS
OPEN ENTRY	SOLDER CUP	1/16	.17	HRKB - 1		HRKB - 2
		3/32	.14		HRKB - 31	HRKB - 32
		1/8	.12		HRKB - 41	HRKB - 42
	EYELET	1/16	.17	HRKB - 5		HRKB - 6
		3/32	.14		HRKB - 35	HRKB - 36
		1/8	.12		HRKB - 45	HRKB - 46
STRAIGHT	1/16				HRKB - 4	
	3/32					
	1/8					
CLOSED ENTRY	SOLDER CUP	1/16	.17	HRKB - 1K		HRKB - 2K
		3/32	.14		HRKB - 31K	HRKB - 32K
		1/8	.12		HRKB - 41K	HRKB - 42K
	EYELET	1/16	.17	HRKB - 5K		HRKB - 6K
		3/32	.14		HRKB - 35K	HRKB - 36K
		1/8	.12		HRKB - 45K	HRKB - 46K
	STRAIGHT	1/16				HRKB - 4K
		3/32				
		1/8				

ELECTRICAL

Wire Size:

Solder Cup Type. One #20 AWG
 Eyelet Type. Two #20 AWG or
 Three #22 AWG

Current Rating.3 Amperes

Withstanding Voltage:

Contact to Contact Sea Level. 1000 VRMS Minimum
 Contact to Ground Sea Level. 2250 VRMS Minimum
 Contact to Contact 70,000 Ft. 300 VRMS Minimum
 Contact to Ground 70,000 Ft. 500 VRMS Minimum

MECHANICAL

Creepage Between Contacts. 0.09 Minimum

Air Space Between Contacts. 0.03 Minimum

Contacts to Accept 0.030 + 0.001 DIA. Pins

Contacts:

Spring Temper Grade "A" Phosphor Bronze or
 Heat Treated Beryllium Copper
 Gold Plated over Copper or Nickel Plate

Mounting Hardware:

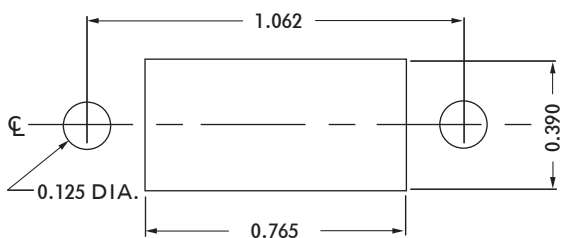
Special Studs, Screws, Lockwashers, and Nuts

Insulation Material:

Choice of **MIL Approved** Thermosetting
 Insulations (See Page 45)

Temperature Ratings: -65°C to +125°C

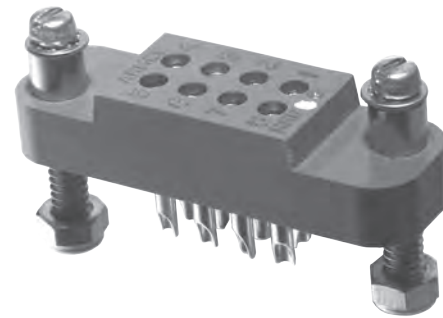
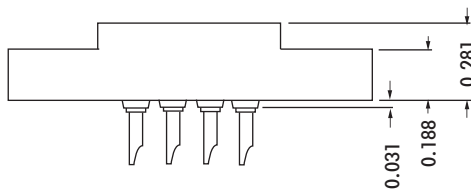
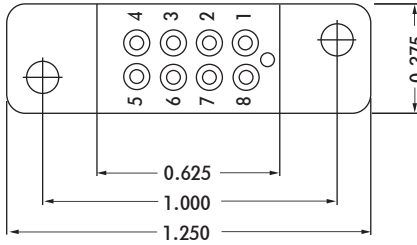
Weight of Socket with Mountings: 0.26 oz.

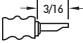
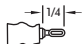
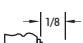


RECOMMENDED CHASSIS CUT-OUT



HRR SERIES



CONTACT DATA	CHASSIS MOUNTING DATA				
	CHASSIS THICKNESS	X-DIMENSION	MOUNTING TYPE		
			BELOW CHASSIS	BELOW CHASSIS	ABOVE CHASSIS
 SOLDER CUP	1/16	.17	HRR - 1		HRR - 2
	3/32	.14		HRR - 31	HRR - 32
	1/8	.12		HRR - 41	HRR - 42
 EYELET	1/16	.17	HRR- 5		HRR - 6
	3/32	.14		HRR - 35	HRR - 36
	1/8	.12		HRR - 45	HRR - 46
 STRAIGHT	1/16				HRR - 4
	3/32				
	1/8				

ELECTRICAL

Wire Size:

- Solder Cup Type One #20 AWG
- Eyelet Type Two #20 AWG or
Three #22 AWG

Current Rating 3 Amperes

Withstanding Voltage:

- Contact to Contact Sea Level . . . 1000 VRMS Minimum
- Contact to Ground Sea Level . . . 3300 VRMS Minimum
- Contact to Contact 70,000 Ft. . . . 300 VRMS Minimum
- Contact to Ground 70,000 Ft. . . . 675 VRMS Minimum

MECHANICAL

Creepage Between Contacts 0.09 Minimum

Air Space Between Contacts 0.03 Minimum

Contacts to Accept 0.020 ± 0.001 DIA. Pins

Contacts:

- Spring Temper Grade "A" Phosphor Bronze, or
Heat Treated Beryllium Copper
- Gold Plated over Copper or Nickel Plate

Mounting Hardware:

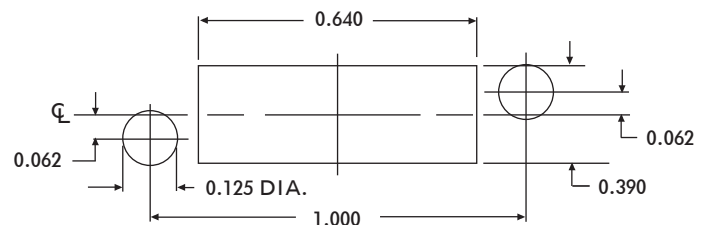
- Special Studs, Screws, Lockwashers, and Nuts

Insulation Material:

- Choice of **MIL Approved** Thermosetting
Insulations (See Page 45)

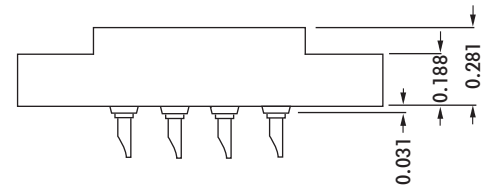
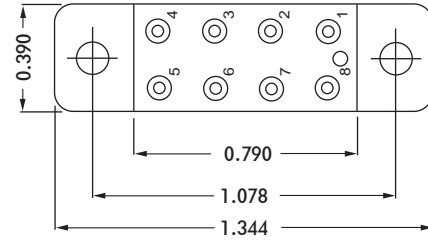
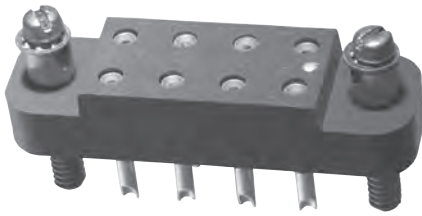
Temperature Ratings: -65°C to +125°C

Weight of Socket with Mountings: 0.23 oz.



RECOMMENDED CHASSIS CUT-OUT

HRC SERIES



CONTACT DATA		CHASSIS MOUNTING DATA				
		CHASSIS THICKNESS	X-DIMENSION			
				BELOW CHASSIS	BELOW CHASSIS	ABOVE CHASSIS
OPEN ENTRY	SOLDER CUP	1/16	.17	HRC - 1		HRC - 2
		3/32	.14		HRC - 31	HRC - 32
		1/8	.12		HRC - 41	HRC - 42
	EYELET	1/16	.17	HRC - 5		HRC - 6
		3/32	.14		HRC - 35	HRC - 36
		1/8	.12		HRC - 45	HRC - 46
	STRAIGHT	1/16				HRC - 4
		3/32				HRC - 34
		1/8				
	WIRE WRAP 0.025 SQ.	1/16	.17	HRC - 9		HRC - 13
		3/32				
		1/8				
WIRE WRAP 0.045 SQ.	1/16	.17	HRC - 513			
	3/32					
	1/8				HRC - 18	
CLOSED ENTRY	SOLDER CUP	1/16	.17	HRC - 1K		HRC - 2K
		3/32	.14		HRC - 31K	HRC - 32K
		1/8	.12		HRC - 41K	HRC - 42K
	EYELET	1/16	.17	HRC - 5K		HRC - 6K
		3/32	.14		HRC - 35K	HRC - 36K
		1/8	.12		HRC - 45K	HRC - 46K
	STRAIGHT	1/16				HRC - 4K
		3/32				
		1/8				
	WIRE WRAP 0.045 SQ.	1/16	.17	HRC - 818K		HRC - 18K
		3/32				
		1/8				

ELECTRICAL

Wire Size:

- Solder Cup Type. One #20 AWG
- Eyelet Type Two #20 AWG or Three #22 AWG

Current Rating 3 Amperes

Withstanding Voltage:

- Contact to Contact Sea Level. 2700 VRMS Minimum
- Contact to Ground Sea Level. 2250 VRMS Minimum
- Contact to Contact 70,000 Ft. 560 VRMS Minimum
- Contact to Ground 70,000 Ft. 500 VRMS Minimum

MECHANICAL

- Creepage Between Contacts. 0.17 Minimum
- Air Space Between Contacts. 0.11 Minimum
- Contacts to Accept 0.030 ± 0.001 DIA. Pins

Contacts:

- Spring Temper Grade "A" Phosphor Bronze, or Heat Treated Beryllium Copper
- Gold Plated over Copper or Nickel Plate

Mounting Hardware:

- Special Studs, Screws, Lockwashers, and Nuts

Insulation Material:

- Choice of **MIL Approved** Thermosetting Insulations (See Page 45)

Temperature Ratings: -65°C to +125°C

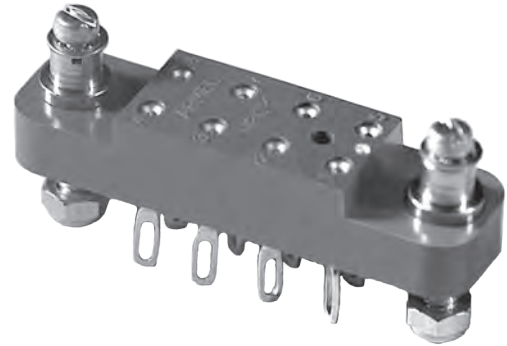
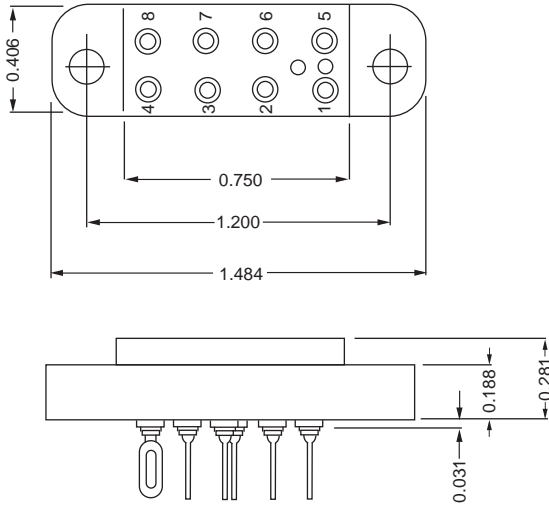
Weight of Socket with Mountings: 0.23 oz.



RECOMMENDED CHASSIS CUT-OUT



HRCY SERIES



ELECTRICAL

Wire Size:

- Solder Cup Type. One #20 AWG
- Eyelet Type. Two #20 AWG or
Three #22 AWG

Current Rating. 3 Amperes

Withstanding Voltage:

- Contact to Contact Sea Level. 2700 VRMS Minimum
- Contact to Ground Sea Level. 3300 VRMS Minimum
- Contact to Contact 70,000 Ft.560 VRMS Minimum
- Contact to Ground 70,000 Ft.675 VRMS Minimum

MECHANICAL

- Creepage Between Contacts.0.17 Minimum
- Air Space Between Contacts.0.11 Minimum
- Contacts to Accept 0.030 ± 0.001 DIA. Pins

Contacts:

- Spring Temper Grade "A" Phosphor Bronze or
Heat Treated Beryllium Copper
- Gold Plated over Copper or Nickel Plate

Mounting Hardware:

- Special Studs, Screws, Lockwashers, and Nuts

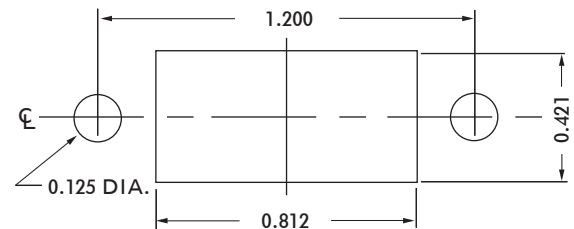
Insulation Material:

- Choice of **MIL Approved** Thermosetting
Insulations (See Page 45)

Temperature Ratings: -65°C to +125°C

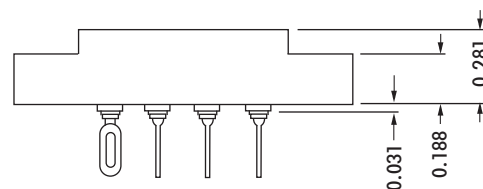
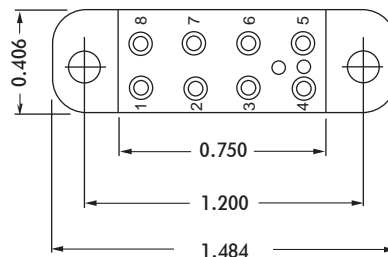
Weight of Socket with Mountings: 0.25 oz.

CONTACT DATA		CHASSIS MOUNTING DATA				
		CHASSIS THICKNESS	X-DIMENSION	MOUNTING STYLE		
				BELOW CHASSIS	BELOW CHASSIS	ABOVE CHASSIS
OPEN ENTRY	SOLDER CUP	1/16	.17	HRCY - 1		HRCY - 2
		3/32	.14		HRCY - 31	HRCY - 32
		1/8	.12		HRCY - 41	HRCY - 42
	EYELET	1/16	.17	HRCY - 5		HRCY - 6
		3/32	.14		HRCY - 35	HRCY - 36
		1/8	.12		HRCY - 45	HRCY - 46
STRAIGHT	1/16				HRCY - 4	
	3/32					
	1/8					
CLOSED ENTRY	SOLDER CUP	1/16	.17	HRCY - 1K		HRCY - 2K
		3/32	.14		HRCY - 31K	HRCY - 32K
		1/8	.12		HRCY - 41K	HRCY - 42K
	EYELET	1/16	.17	HRCY - 5K		HRCY - 6K
		3/32	.14		HRCY - 35K	HRCY - 36K
		1/8	.12		HRCY - 45K	HRCY - 46K
STRAIGHT	1/16				HRCY - 4K	
	3/32					
		1/8				



RECOMMENDED CHASSIS CUT-OUT

HRCZ SERIES



CONTACT DATA		CHASSIS MOUNTING DATA				
		CHASSIS THICKNESS	X-DIMENSION	BELOW CHASSIS	BELOW CHASSIS	ABOVE CHASSIS
OPEN ENTRY	SOLDER CUP	1/16	.17	HRCZ - 1		HRCZ - 2
		3/32	.14		HRCZ - 31	HRCZ - 32
		1/8	.12		HRCZ - 41	HRCZ - 42
	EYELET	1/16	.17	HRCZ - 5		HRCZ - 6
		3/32	.14		HRCZ - 35	HRCZ - 36
		1/8	.12		HRCZ - 45	HRCZ - 46
STRAIGHT	1/16				HRCZ - 4	
	3/32				HRCZ - 34	
	1/8					
CLOSED ENTRY	SOLDER CUP	1/16	.17	HRCZ - 1K		HRCZ - 2K
		3/32	.14		HRCZ - 31K	HRCZ - 32K
		1/8	.12		HRCZ - 41K	HRCZ - 42K
	EYELET	1/16	.17	HRCZ - 5K		HRCZ - 6K
		3/32	.14		HRCZ - 35K	HRCZ - 36K
		1/8	.12		HRCZ - 45K	HRCZ - 46K
	STRAIGHT	1/16				HRCZ - 4K
		3/32				
		1/8				

ELECTRICAL

Wire Size:

Solder Cup Type. One #20 AWG
 Eyelet Type. Two #20 AWG or
 Three #22 AWG

Current Rating. 3 Amperes

Withstanding Voltage:

Contact to Contact Sea Level. 2700 VRMS Minimum
 Contact to Ground Sea Level. 3300 VRMS Minimum
 Contact to Contact 70,000 Ft. 560 VRMS Minimum
 Contact to Ground 70,000 Ft. 675 VRMS Minimum

MECHANICAL

Creepage Between Contacts. 0.17 Minimum
 Air Space Between Contacts. 0.11 Minimum
 Contacts to Accept 0.030 ± 0.001 DIA. Pins

Contacts:

Spring Temper Grade "A" Phosphor Bronze, or
 Heat Treated Beryllium Copper
 Gold Plated over Copper or Nickel Plate

Mounting Hardware:

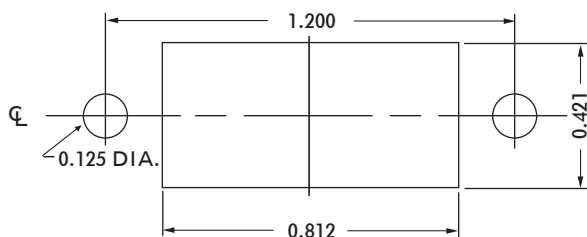
Special Studs, Screws, Lockwashers, and Nuts

Insulation Material:

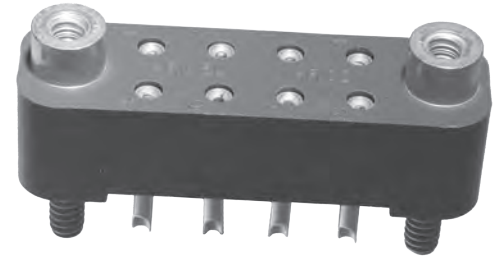
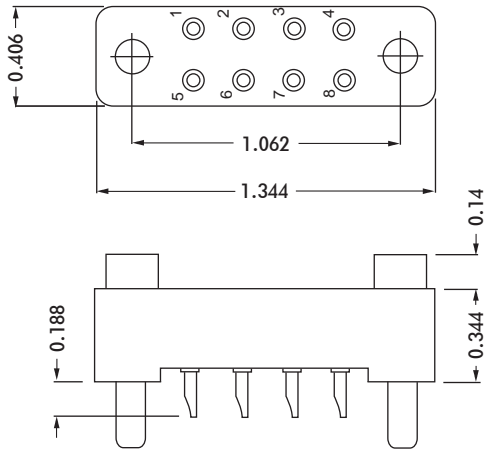
Choice of **MIL Approved** Thermosetting
 Insulations (See Page 45)

Temperature Ratings: -65°C to +125°C

Weight of Socket with Mountings: 0.23 oz.



RECOMMENDED CHASSIS CUT-OUT



ELECTRICAL

Wire Size:

- Solder Cup Type. One #20 AWG
- Eyelet Type. Two #20 AWG or
Three #22 AWG

Current Rating. 3 Amperes

Withstanding Voltage:

- Contact to Contact Sea Level. . . 2700 VRMS Minimum
- Contact to Ground Sea Level. . . 2700 VRMS Minimum
- Contact to Contact 70,000 Ft. . . .560 VRMS Minimum
- Contact to Ground 70,000 Ft. . . .560 VRMS Minimum

MECHANICAL

- Creepage Between Contacts. 0.16 Minimum
- Air Space Between Contacts. 0.11 Minimum
- Contacts to Accept 0.030 ± 0.001 DIA. Pins

Contacts:

- Spring Temper Grade "A" Phosphor Bronze, or
Heat Treated Beryllium Copper
- Gold Plated over Copper or Nickel Plate

Mounting Hardware:

- Special Stud, Screws, Lockwashers, and Nuts

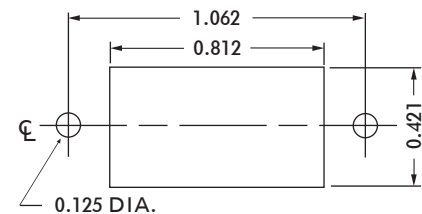
Insulation Material:

- Choice of **MIL Approved** Thermosetting
Insulations (See Page 45)

Temperature Ratings: -65°C to +125°C

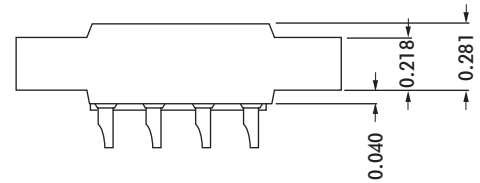
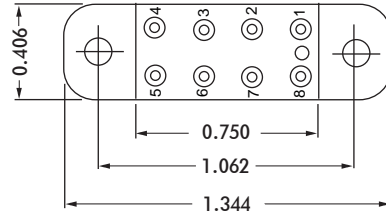
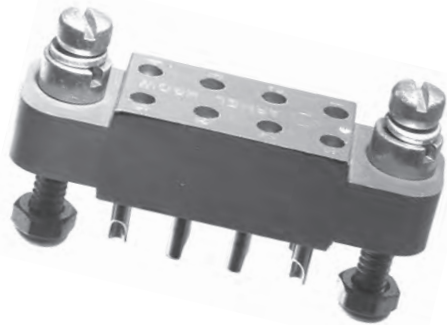
Weight of Socket with Mountings: 0.26 oz.

		CHASSIS MOUNTING DATA		
		CONTACT DATA	CHASSIS THICKNESS	
OPEN EN TRY	 SOLDER CUP	 STUD 0.28	 RIVET 0.11	
		1/16 - 1/8	HRCD-2	
		1/16		HRCD-22
	 EYELET	1/16 - 1/8	HRCD-6	
		1/16		HRCD-26
	 STRAIGHT	1/16 - 1/8	HRCD-24	
1/16			HRCD-4	
CLOSE EN TRY	 SOLDER CUP	1/16 - 1/8	HRCD-2K	
		1/16		HRCD-22K
	 EYELET	1/16 - 1/8	HRCD-6K	
		1/16		HRCD-26K
 STRAIGHT	1/8	HRCD-24K	HRCD-4K	
	1/16			



RECOMMENDED CHASSIS CUT-OUT

HRCW SERIES



CONTACT DATA		CHASSIS MOUNTING DATA				
		CHASSIS THICKNESS	X-DIMENSION			
OPEN ENTRY	SOLDER CUP	1/16	.14	HRCW - 1	HRCW - 22	
		3/32	.11	HRCW - 31	HRCW - 32	
		1/8	.08		HRCW - 42	
	EYELET	1/16	.14	HRCW - 5	HRCW - 6	
		3/32	.11	HRCW - 35	HRCW - 36	
		1/8	.08		HRCW - 46	
	STRAIGHT	1/16	.14		HRCW - 24	
		3/32	.11			
		1/8	.08			
	CLOSED ENTRY	SOLDER CUP	1/16	.14	HRCW - 1K	HRCW - 22K
			3/32	.11	HRCW - 31K	HRCW - 32K
			1/8	.08		HRCW - 42K
EYELET		1/16	.14	HRCW - 5K	HRCW - 6K	
		3/32	.11	HRCW - 35K	HRCW - 36K	
		1/8	.08		HRCW - 46K	
STRAIGHT		1/16			HRCW - 24K	
		3/32				
		1/8				

ELECTRICAL

Wire Size:

Solder Cup Type. One #20 AWG
 Eyelet Type. Two #20 AWG or
 Three #22 AWG

Current Rating. 3 Amperes
 Withstanding Voltage:

Contact to Contact Sea Level. . .2700 VRMS Minimum
 Contact to Ground Sea Level. . .2250 VRMS Minimum
 Contact to Contact 70,000 Ft. . .560 VRMS Minimum
 Contact to Ground 70,000 Ft. . . 500 VRMS Minimum

MECHANICAL

Creepage Between Contacts. 0.16 Minimum
 Air Space Between Contacts. 0.11 Minimum
 Contacts to Accept 0.030 ± 0.001 DIA. Pins

Contacts:

Spring Temper Grade "A" Phosphor Bronze, or
 Heat Treated Beryllium Copper
 Gold Plated over Copper or Nickel Plate

Mounting Hardware:

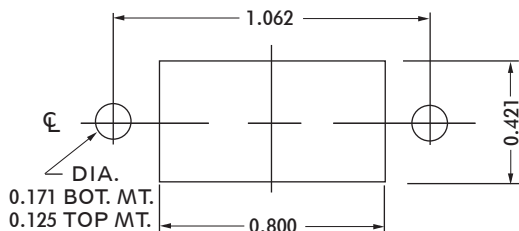
Special Studs, Screws, Lockwashers, and Nuts

Insulation Material:

Choice of **MIL Approved** Thermosetting
 Insulations (See Page 45)

Temperature Ratings: -65°C to +125°C

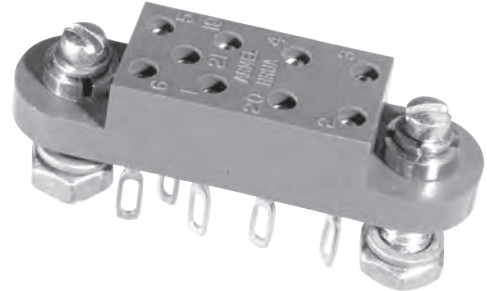
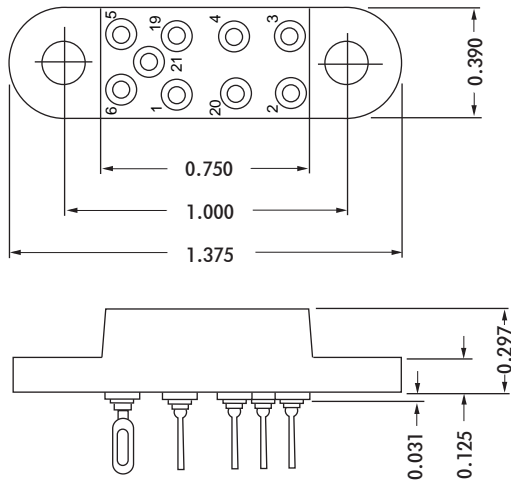
Weight of Socket with Mountings: 0.27 oz.



RECOMMENDED CHASSIS CUT-OUT



HRUA SERIES



ELECTRICAL

Wire Size:

- Solder Cup Type. One #20 AWG
- Eyelet Type. Two #20 AWG or
Three #22 AWG

Current Rating. 3 Amperes

Withstanding Voltage:

- Contact to Contact Sea Level. 1500 VRMS Minimum
- Contact to Ground Sea Level. 1000 VRMS Minimum
- Contact to Contact 70,000 Ft. 375 VRMS Minimum
- Contact to Ground 70,000 Ft. 300 VRMS Minimum

MECHANICAL

- Creepage Between Contacts. 0.11 Minimum
- Air Space Between Contacts. 0.05 Minimum
- Contacts to Accept 0.030 ± 0.001 DIA. Pins

Contacts:

- Spring Temper Grade "A" Phosphor Bronze, or
- Heat Treated Beryllium Copper
- Gold Plated over Copper or Nickel Plate

Mounting Hardware:

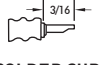
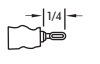
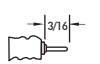
- Special Studs, Screws, Lockwashers, and Nuts

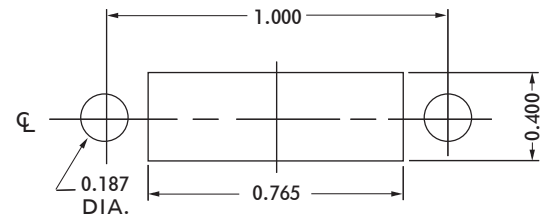
Insulation Material:

- Choice of **MIL Approved** Thermosetting
- Insulations (See Page 45)

Temperature Ratings: -65°C to +125°C

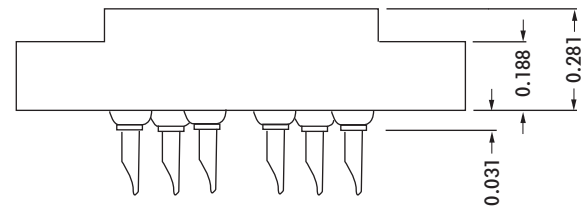
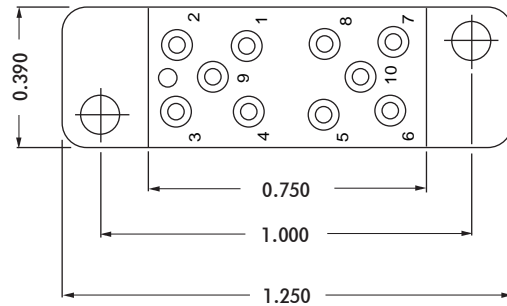
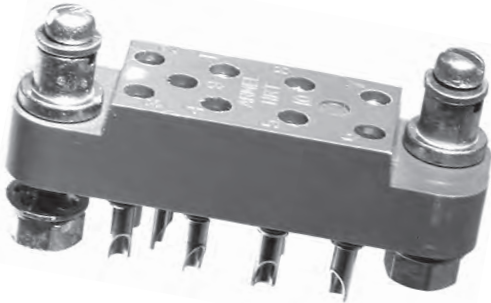
Weight of Socket with Mountings: 0.24 oz.

CONTACT DATA	CHASSIS MOUNTING DATA				
	CHASSIS THICKNESS	X-DIMENSION	BELOW CHASSIS	BELOW CHASSIS	ABOVE CHASSIS
 SOLDER CUP	1/16				
	3/32	.06		HRUA - 31	
	1/8				
 EYELET	1/16				
	3/32	.06		HRUA - 35	
	1/8				
 STRAIGHT	1/16				
	3/32				
	1/8				



RECOMMENDED CHASSIS CUT-OUT

HRT SERIES



CONTACT DATA		CHASSIS MOUNTING DATA						
		CHASSIS THICKNESS	X-DIMENSION					
OPEN ENTRY	SOLDER CUP	1/16	0.17	BELOW CHASSIS	HRT - 1		HRT - 2	
			0.17	BELOW CHASSIS	HRT - 7		HRT - 8	
			0.23	ABOVE CHASSIS	HRT - 13		HRT - 14	
	EYELET	1/16	0.17	BELOW CHASSIS	HRT - 5		HRT - 6	
			0.17	BELOW CHASSIS	HRT - 11		HRT - 12	
			0.23	ABOVE CHASSIS	HRT - 17		HRT - 18	
	STRAIGHT	1/16	0.17	BELOW CHASSIS	HRT - 3		HRT - 4	
			0.17	BELOW CHASSIS	HRT - 9		HRT - 10	
			0.23	ABOVE CHASSIS	HRT - 15		HRT - 16	
	CLOSE ENTRY	SOLDER CUP	1/16	0.17	BELOW CHASSIS	HRT - 1K		HRT - 2K
				0.17	BELOW CHASSIS	HRT - 7K		HRT - 8K
				0.23	ABOVE CHASSIS	HRT - 13K		HRT - 14K
EYELET		1/16	0.17	BELOW CHASSIS	HRT - 5K		HRT - 6K	
			0.17	BELOW CHASSIS	HRT - 11K		HRT - 12K	
			0.23	ABOVE CHASSIS	HRT - 17K		HRT - 18K	
STRAIGHT		1/16	0.17	BELOW CHASSIS	HRT - 3K		HRT - 4K	
			0.17	BELOW CHASSIS	HRT - 9K		HRT - 10K	
			0.23	ABOVE CHASSIS	HRT - 15K		HRT - 16K	

ELECTRICAL

Wire Size:

- Solder Cup Type One #20 AWG
- Eyelet Type Two #20 AWG or Three #22 AWG

Current Rating 3 Amperes

Withstanding Voltage:

- Contact to Contact Sea Level . . 1500 VRMS Minimum
- Contact to Ground Sea Level . . 1500 VRMS Minimum
- Contact to Contact 70,000 Ft. . . 375 VRMS Minimum
- Contact to Ground 70,000 Ft. . . 375 VRMS Minimum

MECHANICAL

- Creepage Between Contacts 0.11 Minimum
- Air Space Between Contacts 0.05 Minimum
- Contacts to Accept 0.030 ± 0.001 DIA. Pins

Contacts:

- Spring Temper Grade "A" Phosphor Bronze, or Heat Treated Beryllium Copper
- Gold Plated over Copper or Nickel Plate

Mounting Hardware:

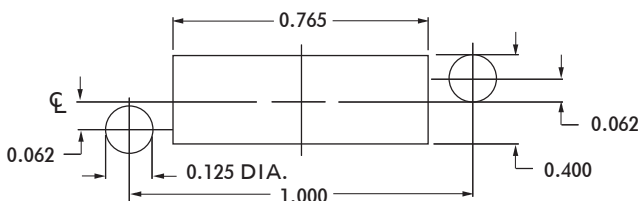
- Special Studs, Screws, Lockwashers, and Nuts

Insulation Material:

- Choice of **MIL Approved** Thermosetting Insulations (See Page 45)

Temperature Ratings: -65°C to +125°C

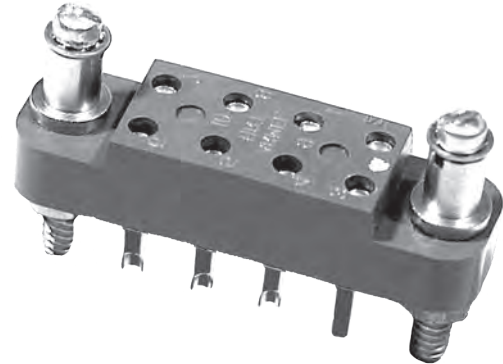
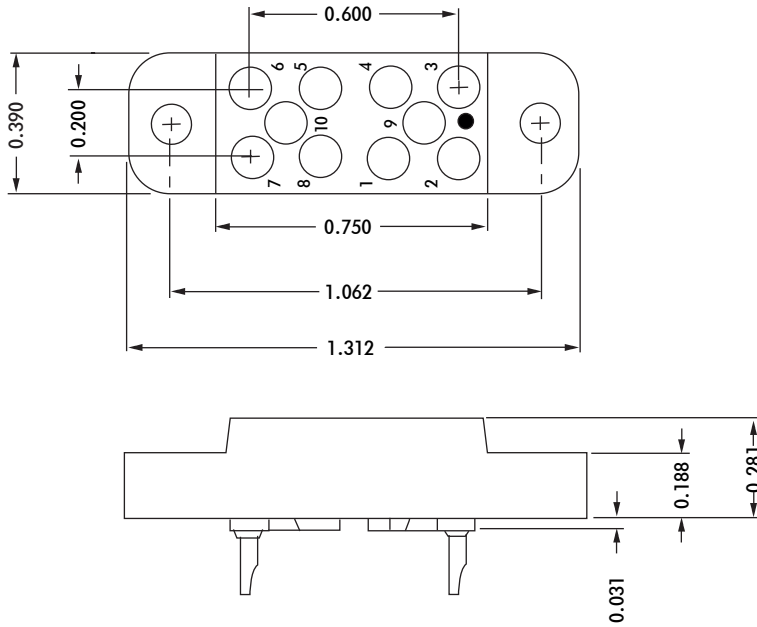
Weight of Socket with Mountings: 0.26 oz.



RECOMMENDED CHASSIS CUT-OUT



HRTA SERIES



CONTACT DATA		CHASSIS MOUNTING DATA				
		CHASSIS THICKNESS	X-DIMENSION			
OPEN ENTRY	SOLDER CUP 	1/16	.17	HRTA - 1		HRTA - 2
		3/32	.14			HRTA - 31
		1/8	.12			HRTA - 41
	EYELET 	1/16	.17	HRTA - 5		
		3/32	.14			HRTA - 35
		1/8	.12			HRTA - 45
	STRAIGHT 	1/16				HRTA - 4
		3/32				HRTA - 34
		1/8				
CLOSED ENTRY	SOLDER CUP 	1/16	.17	HRTA - 1K		HRTA - 2K
		3/32	.14			
		1/8	.12			
	EYELET 	1/16	.17	HRTA - 5K		
		3/32	.14			HRTA - 35K
		1/8	.12			HRTA - 45K
STRAIGHT 	1/16				HRTA - 4K	
	3/32				HRTA - 34K	
	1/8					

ELECTRICAL:

Wire Size

Solder Cup Type One #20 AWG
 Eyelet Type Two #20 AWG or
 Three #22 AWG

Current Rating 3 Amperes

Withstanding Voltage:

Contact to Contact Sea Level . . .1500 VRMS Minimum
 Contact to Ground Sea Level . . .1500 VRMS Minimum
 Contact to Contact 70,000 Ft. . . .375 VRMS Minimum
 Contact to Ground 70,000Ft. . . .375 VRMS Minimum

MECHANICAL:

Creepage Between Contacts 0.17 Minimum
 Air Space Between Contacts 0.11 Minimum
 Contacts to Accept 0.030 ± 0.001 DIA. Pins

Contacts:

Spring Temper Grade "A" Phosphor Bronze or
 Heat Treated Beryllium Copper
 Gold Plated over Copper or Nickel Plate

Mounting Hardware:

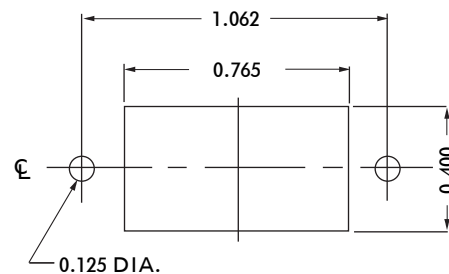
Special Studs, Screws, Lockwashers, and Nuts

Insulation Material

Choice of **MIL Approved** Thermosetting
 Insulations (See Page 45)

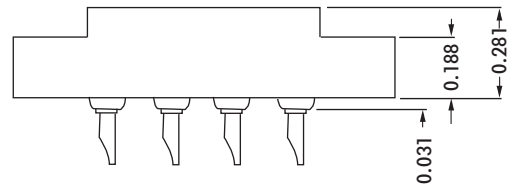
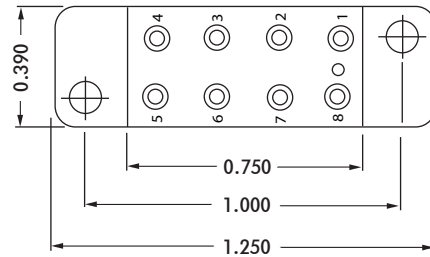
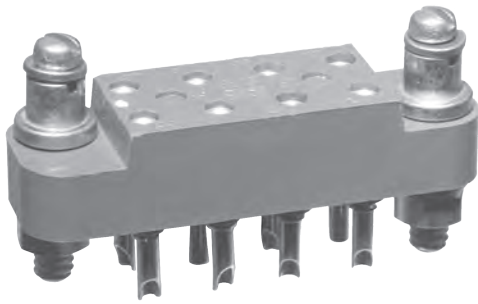
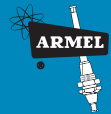
Temperature Ratings: -65°C to +125°C

Weight of Socket with Mountings: 0.30 oz.



RECOMMENDED CHASSIS CUT-OUT

HRTS SERIES



CONTACT DATA	CHASSIS MOUNTING DATA				
	CHASSIS THICKNESS	X-DIMENSION	BELOW CHASSIS	ABOVE CHASSIS	
OPEN ENTRY	SOLDER CUP 	1/16 .17	HRTS - 13	HRTS - 14	
		3/32 .14			
		1/8 .12			
		1/16 .17	HRTS - 17	HRTS - 18	
	EYELET 	3/32 .14			
		1/8 .12			
	STRAIGHT 	1/16 .17	HRTS - 15	HRTS - 16	
		3/32 .17	HRTS - 44		
	WIRE WRAP 	0.045 SQ. 1/16 .17	HRTS - 518	HRTS - 412	
		0.80			
	CLOSED ENTRY	SOLDER CUP 	1/16 .17	HRTS - 13K	HRTS - 14K
			3/32 .14		
1/8 .12					
1/16 .17			HRTS - 17K	HRTS - 18K	
EYELET 		3/32 .14			
		1/8 .12			
STRAIGHT 		1/16 .17		HRTS - 16K	
		3/32 .17			
WIRE WRAP 		0.025 SQ. 1/16 .17	HRTS - 518K	HRTS - 519K	
		0.72			

ELECTRICAL:

Wire Size
 Solder Cup Type. One #20 AWG
 Eyelet Type. Two #20 AWG or
 Three #22 AWG
 Current Rating. 3 Amperes
 Withstanding Voltage:
 Contact to Contact Sea Level. 2700 VRMS Minimum
 Contact to Ground Sea Level. 1500 VRMS Minimum
 Contact to Contact 70,000 Ft. 560 VRMS Minimum
 Contact to Ground 70,000 Ft. 375 VRMS Minimum

MECHANICAL

Creepage Between Contacts. 0.17 Minimum
 Air Space Between Contacts. 0.11 Minimum
 Contacts to Accept 0.030 ± 0.001 DIA. Pins

Contacts:

Spring Temper Grade "A" Phosphor Bronze, or
 Heat Treated Beryllium Copper
 Gold Plated over Copper or Nickel Plate

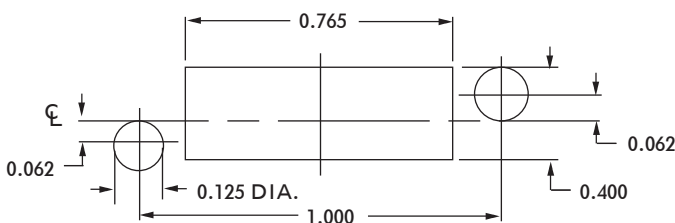
Mounting Hardware:

Special Studs, Screws, Lockwashers, and Nuts

Insulation Material:

Choice of **MIL Approved** Thermosetting
 Insulations (See Page 45)

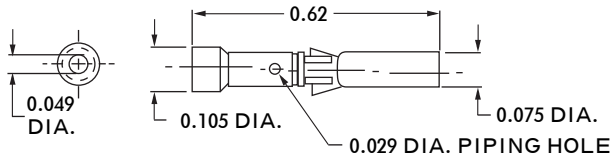
Temperature Ratings: -65°C to + 125°C
 Weight of Socket with Mountings: 0.26 oz.



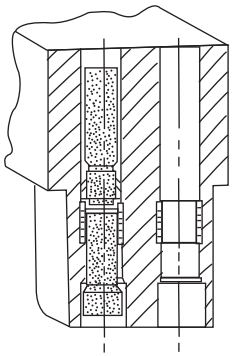
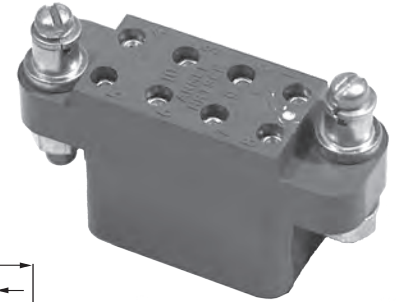
RECOMMENDED CHASSIS CUT-OUT



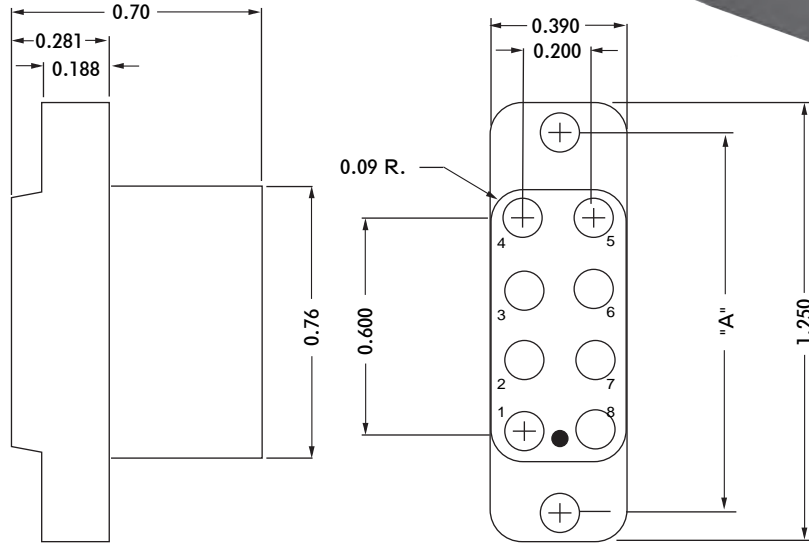
HRTS-CK SERIES



Closed Entry Contact
No. 1007010-1



Crimp
Removable Contacts



SPECIFICATIONS

ELECTRICAL

- Current Rating 3 Amperes
- Contact Size 0.030 inch
- Terminal Accomodation One No.20, One No.22,
One or Two No. 24 AWG Wire

Withstanding Voltage:

- Contact to Contact Sea Level 2700 VRMS Minimum
- Contact to Ground Sea Level 1500 VRMS Minimum
- Contact to Contact 70,000 Ft. 560 VRMS Minimum
- Contact to Ground 70,000 Ft. 375 VRMS Minimum

MECHANICAL

- Creepage Between Contacts 0.12 Minimum
- Air Space Between Contacts 0.09 Minimum
- Contacts to Accept 0.030 + 0.001 DIA. Pins
- Contact Material & Plating Phosphor Bronze, Gold Plated
(Sleeve - Brass) (0.000050 Inch) Per MIL-G-45204
Type II, Class 1 over Copper Plate
- Contact Retaining Clip Stainless Steel, Passivated
- Crimping Tool No. MS 3191A
- Positioner No. KP7010
- Insertion Tool Not required

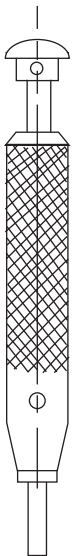
Mounting Hardware:

Special Studs, Screws, Lockwashers, and Nuts

Insulation Material:

Choice of **MIL Approved** Thermosetting
Insulations (See Page 45)

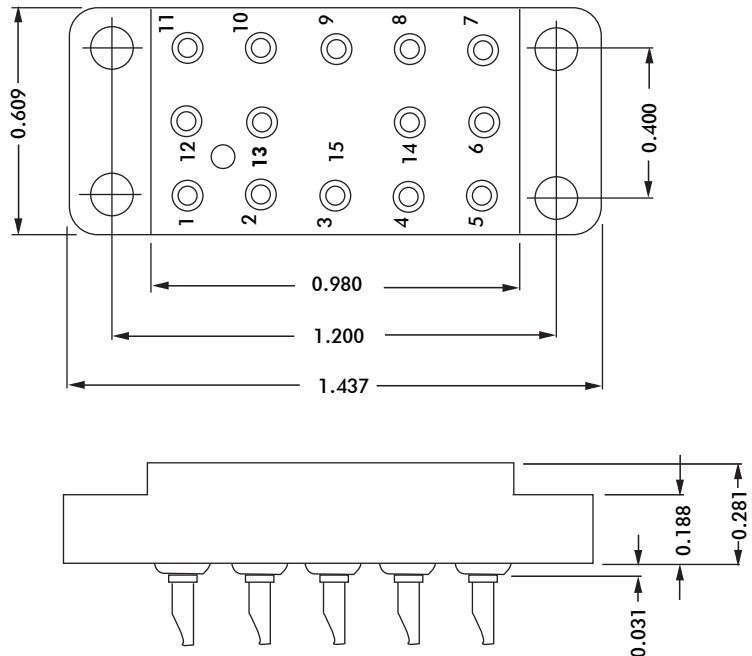
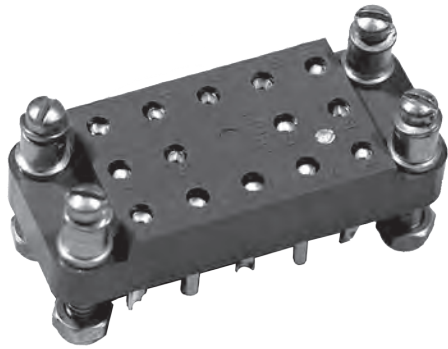
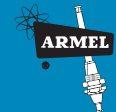
Temperature Ratings: -65°C to +125°C
Weight of Socket with Mountings: 0.45 oz.



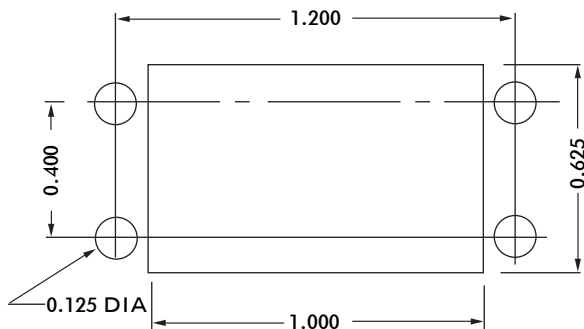
Removing Tool
No. T9066-2

PART NO.	NUMBER OF CONTACTS	"A"
HRTS-CK-13	8	1.000
HRTS-CK-103	10	1.000
HRTS-CK-2003	8	1.078

HRCC SERIES



CONTACT DATA	CHASSIS MOUNTING DATA			
	CHASSIS THICKNESS	X-DIMENSION	BELOW CHASSIS	ABOVE CHASSIS
 SOLDER CUP	1/16	.17	HRCC - 1	HRCC - 2
	3/32	.14		HRCC - 31
	1/8	.12		HRCC - 41
 EYELET	1/16	.17	HRCC - 5	HRCC - 6
	3/32	.14		HRCC - 35
	1/8	.12		HRCC - 45
 STRAIGHT	1/16			HRCC - 4
	3/32			HRCC - 34
	0.045 SQ.	1/16	.17	HRCC - 718
 WIRE WRAP	3/32			HRCC - 719
	1/8			
 SOLDER CUP	1/16	.17	HRCC - 1K	HRCC - 2K
	3/32	.14		HRCC - 31K
	1/8	.12		HRCC - 41K
 EYELET	1/16	.17	HRCC - 5K	HRCC - 6K
	3/32	.14		HRCC - 35K
	1/8	.12		HRCC - 45K
 STRAIGHT	1/16			HRCC - 4K
	3/32			
	1/8			
 WIRE WRAP	0.025 SQ.	1/16	.17	HRCC - 513K
	3/32	.23	HRCC - 13K	HRCC - 18K
	1/8			



RECOMMENDED CHASSIS CUT-OUT

ELECTRICAL

Wire Size:

- Solder Cup Type. One #20 AWG
- Eyelet Type. Two #20 AWG or
Three #22 AWG

Current Rating. 3 Amperes

Withstanding Voltage:

- Contact to Contact Sea Level. 2700 VRMS Minimum
- Contact to Ground Sea Level. 1500 VRMS Minimum
- Contact to Contact 70,000 Ft.. . . . 560 VRMS Minimum
- Contact to Ground 70,000 Ft.. . . . 375 VRMS Minimum

MECHANICAL

- Creepage Between Contacts. 0.17 Minimum
- Air Space Between Contacts. 0.11 Minimum
- Contacts to Accept 0.030 ± 0.001 DIA. Pins

Contacts:

- Spring Temper Grade "A" Phosphor Bronze, or
- Heat Treated Beryllium Copper
- Gold Plated over Copper or Nickel Plate

Mounting Hardware:

- Special Studs, Screws, Lockwashers, and Nuts

Insulation Material:

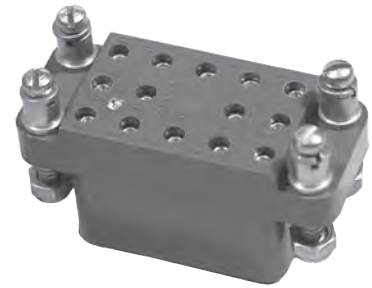
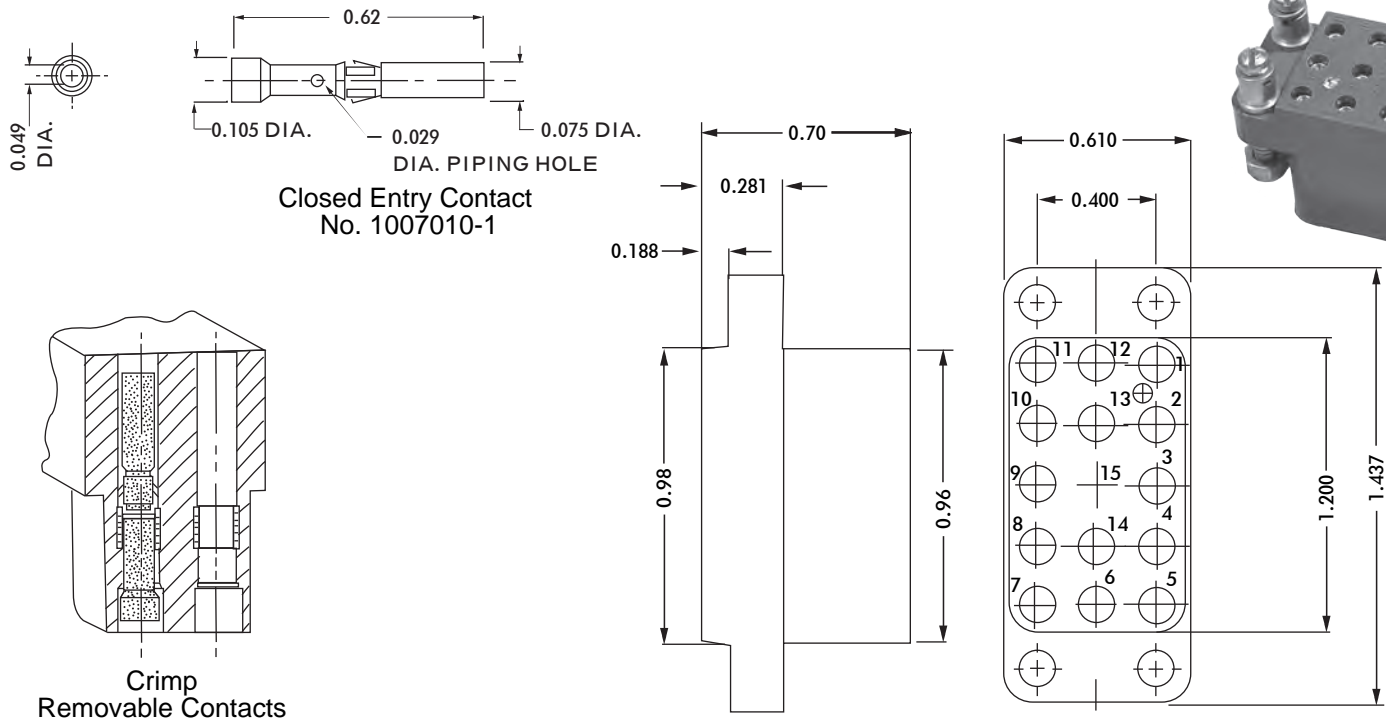
- Choice of **MIL Approved** Thermosetting Insulations (See Page 45)

Temperature Ratings: -65°C to +125°C

Weight of Socket with Mountings: 0.43 oz.



HRCC-CK SERIES



SPECIFICATIONS

ELECTRICAL

Current Rating	3 Amperes
Contact Size	0.030 Inch
Withstanding Voltage	
Contact to Contact Sea Level	2700 VRMS Minimum
Contact to Ground Sea Level	1500 VRMS Minimum
Contact to Contact 70,000 Ft.	.560 VRMS Minimum
Contact to Ground 70,000 Ft.	.375 VRMS Minimum

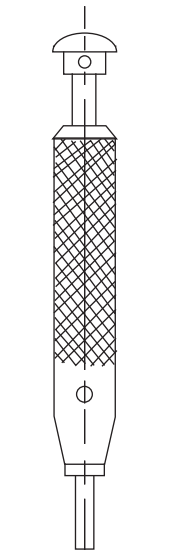
MECHANICAL

Creepage Between Contacts	.012 Min.
Air Space Between Contacts	.009 Min.
Terminal Accommodation	One No. 20, One No. 22, One or Two No. 24 AWG Wire
Contact Material & Plating (Sleeve-Brass)	Phosphor Bronze, Gold Plated (0.000050 inch) per MIL-G-45204, Type II, Class 1, Over Copper Plate
Contact Retaining Clip	Stainless Steel, Passivated
Crimping Tool	No. MS 3191A
Positioner	No. KP7010
Insertion Tool	Not Required

Mounting Hardware:
Special Studs, Screws Lockwashers and Nuts

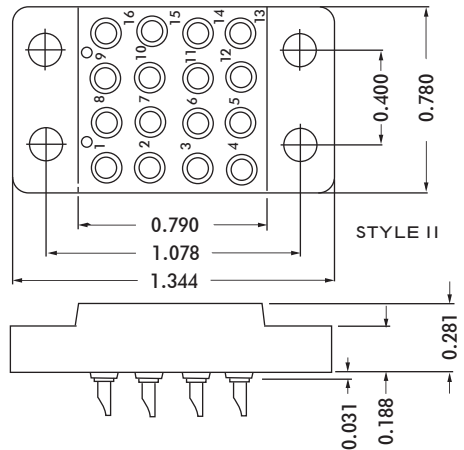
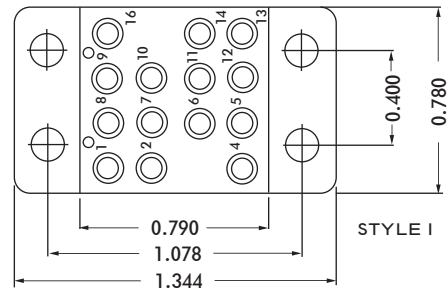
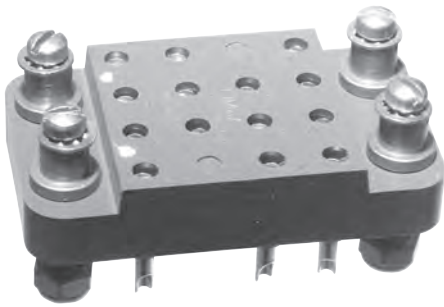
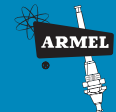
Insulation Material:
Choice of **MIL Approved** Thermosetting
Insulations (See Page 45)

Temperature Ratings: -65°C to +125°C
Weight of Socket with Mountings: 0.75 oz.

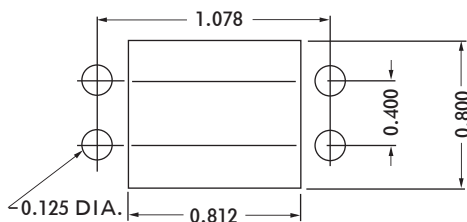


Removing Tool
No. T9066-2

HRCM SERIES



CONTACT DATA		CHASSIS MOUNTING DATA						
		CHASSIS THICKNESS	X-DIMENSION	STYLE	NO. OF CONTACTS	BELOW CHASSIS	BELOW CHASSIS	ABOVE CHASSIS
OPEN ENDED	SOLDER CUP	1/16	.17	I	14	HRCM-1		HRCM-2
				II	16	HRCM-601		HRCM-602
		3/32	.14	I	14		HRCM-31	HRCM-32
				II	16		HRCM-631	HRCM-632
		1/8	.12	I	14		HRCM-41	HRCM-42
				II	16		HRCM-641	HRCM-642
	EYELET	1/16	.17	I	14	HRCM-5		HRCM-6
				II	16	HRCM-605		HRCM-606
		3/32	.14	I	14		HRCM-35	HRCM-36
				II	16		HRCM-635	HRCM-636
		1/8	.12	I	14		HRCM-45	HRCM-46
				II	16		HRCM-645	HRCM-646
STRAIGHT	1/16	.17	I	14			HRCM-4	
			II	16			HRCM-604	
	3/32	.14	I	14				
			II	16				
	1/8	.12	I	14				
			II	16				
CLOSE ENDED	SOLDER CUP	1/16	.17	I	14	HRCM-1K		HRCM-2K
				II	16	HRCM-601K		HRCM-602K
		3/32	.14	I	14		HRCM-31K	HRCM-32K
				II	16		HRCM-631K	HRCM-632K
		1/8	.12	I	14		HRCM-41K	HRCM-42K
				II	16		HRCM-641K	HRCM-642K
	EYELET	1/16	.17	I	14	HRCM-5K		HRCM-6K
				II	16	HRCM-605K		HRCM-606K
		3/32	.14	I	14		HRCM-35K	HRCM-36K
				II	16		HRCM-635K	HRCM-636K
		1/8	.12	I	14		HRCM-45K	HRCM-46K
				II	16		HRCM-645K	HRCM-646K
STRAIGHT	1/16	.17	I	14			HRCM-4K	
			II	16			HRCM-604K	
	3/32	.14	I	14				
			II	16				
	1/8	.12	I	14				
			II	16				



RECOMMENDED CHASSIS CUT-OUT

ELECTRICAL

Wire Size:

- Solder Cup Type. One #20 AWG
- Eyelet Type. Two #20 AWG or Three #22 AWG

Current Rating. 3 Amperes

Withstanding Voltage:

- Contact to Contact Sea Level. 2700 VRMS Minimum
- Contact to Ground Sea Level. 2250 VRMS Minimum
- Contact to Contact 70,000 Ft. 560 VRMS Minimum
- Contact to Ground 70,000 Ft. 500 VRMS Minimum

MECHANICAL

- Creepage Between Contacts. 0.17 Minimum
- Air Space Between Contacts. 0.11 Minimum
- Contacts to Accept 0.030 ± 0.001 DIA. Pins

Contacts:

- Spring Temper Grade "A" Phosphor Bronze, or Heat Treated Beryllium Copper
- Gold Plated over Copper or Nickel Plate

Mounting Hardware:

- Special Studs, Screws, Lockwashers, and Nuts

Insulation Material:

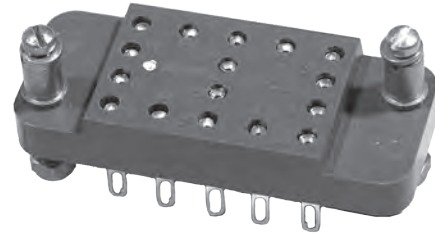
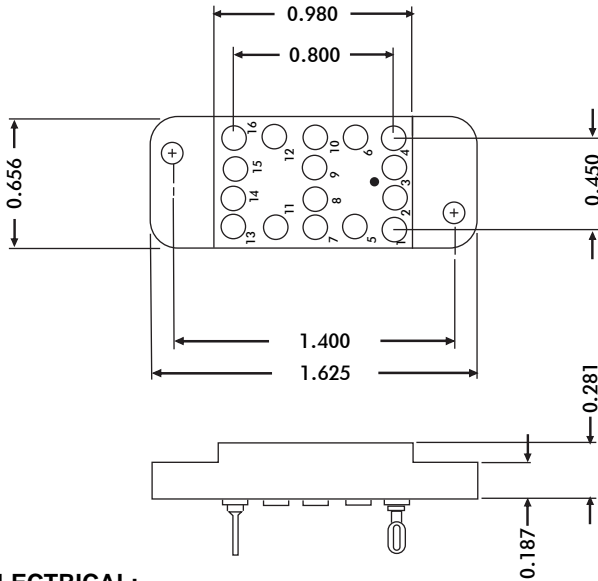
- Choice of **MIL Approved** Thermosetting Insulations (See Page 45)

Temperature Ratings: -65°C to +125°C

Weight of Socket with Mountings: 0.43 oz.



HRCE SERIES



ELECTRICAL:

Wire Size:

Solder Cup Type. One #20 AWG
 Eyelet Type. Two #20 AWG or
 Three #22 AWG

Current Rating. 3 Amperes

Withstanding Voltage:

Contact to Contact Sea Level. . . 1200 VRMS Minimum
 Contact to Ground Sea Level. . . .3300 VRMS Minimum
 Contact to Contact 70,000 Ft. . . .300 VRMS Minimum
 Contact to Ground 70,000 Ft. . . .675 VRMS Minimum

MECHANICAL:

Creepage Between Contacts. 0.12 Minimum
 Air Space Between Contacts. 0.05 Minimum
 Contacts to Accept 0.030 + 0.001 DIA. Pins

Contacts:

Spring Temper Grade "A" Phosphor Bronze or
 Heat Treated Beryllium Copper
 Gold Plated over Copper or Nickel Plate

Mounting Hardware:

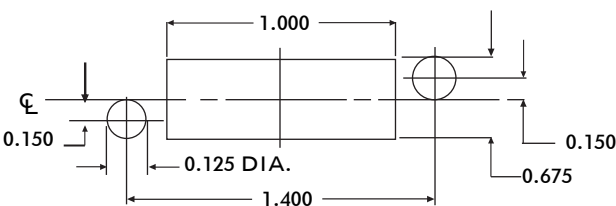
Special Studs, Screws, Lockwashers, and Nuts

Insulation Material:

Choice of **MIL Approved** Thermosetting
 Insulations (See Page 45)

Temperature Ratings: -65°C to +125°C

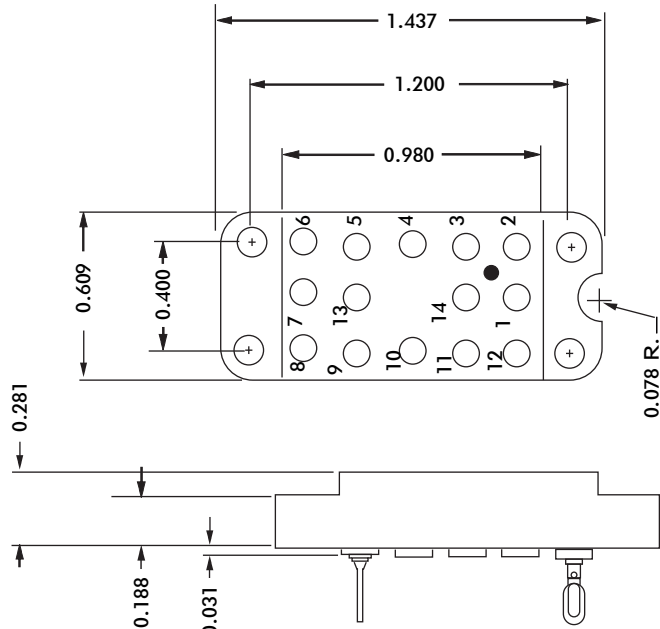
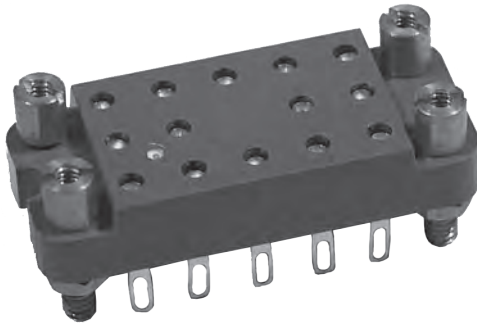
Weight of Socket with Mountings: 0.45 oz.



RECOMMENDED CHASSIS CUT-OUT

CONTACT DATA		CHASSIS MOUNTING DATA					
		CHASSIS THICKNESS	X-DIMENSION				
			BELOW CHASSIS	BELOW CHASSIS	ABOVE CHASSIS		
OPEN MOUNTERY	SOLDER CUP	1/16	.17	HRCE - 1		HRCE - 2	
		3/32	.14				
		1/8	.12				
	EYELET	1/16	.17	HRCE - 6		HRCE - 5	
		3/32	.14				
		1/8	.12				
	STRAIGHT	1/16				HRCE - 4	
		3/32					
		1/8					
	STRAIGHT	1/16					HRCE - 24
		3/32					
		1/8					
WIRE WRAP	0.045 SQ.	1/16	.17	HRCE - 28			
	0.80	3/32	.14				
	1/8	.12					
WIRE WRAP	0.025 SQ.	1/16	.17	HRCE - 18			
	0.68	3/32	.14				
	1/8	.12					
CLOSE MOUNTERY	SOLDER CUP	1/16	.17	HRCE - 1K		HRCE - 2K	
		3/32	.14				
		1/8	.12				
	EYELET	1/16	.17	HRCE - 6K		HRCE - 5K	
		3/32	.14				
		1/8	.12				
	STRAIGHT	1/16				HRCE - 4K	
		3/32					
		1/8					
	STRAIGHT	15/64					HRCE - 24K
		3/32					
		1/8					
WIRE WRAP	0.045 SQ.	1/16	.17	HRCE - 28K			
	5/8	3/32	.14				
	1/8	.12					
WIRE WRAP	0.025 SQ.	1/16	.17	HRCE - 18K			
	0.72	3/32	.14				
	1/8	.12					

HRCP SERIES



CONTACT DATA	CHASSIS MOUNTING DATA				
	CHASSIS THICKNESS	X-DIMENSION	BELOW CHASSIS	BELOW CHASSIS	ABOVE CHASSIS
 SOLDER CUP	$\frac{1}{16}$.17	HRCP-1		
	$\frac{3}{32}$.14	HRCP-31		
	$\frac{1}{8}$.12	HRCP-41		
 EYELET	$\frac{1}{16}$.17	HRCP-5		
	$\frac{3}{32}$.14	HRCP-35		
	$\frac{1}{8}$.12	HRCP-45		
 STRAIGHT	$\frac{1}{16}$				HRCP-4
	$\frac{3}{32}$				HRCP-34
	$\frac{1}{8}$				HRCP-44

ELECTRICAL

Wire Size:

Solder Cup Type. One #20 AWG
 Eyelet Type. Two #20 AWG or
 Three #22 AWG

Current Rating. 3 Amperes

Withstanding Voltage:

Contact to Contact Sea Level. 2700 VRMS Minimum
 Contact to Ground Sea Level. 1500 VRMS Minimum
 Contact to Contact 70,000 Ft. 560 VRMS Minimum
 Contact to Ground 70,000 Ft. 375 VRMS Minimum

MECHANICAL

Creepage Between Contacts. 0.17 Minimum
 Air Space Between Contacts. 0.11 Minimum
 Contacts to Accept 0.030 ± 0.001 DIA. Pins

Contacts:

Spring Temper Grade "A" Phosphor Bronze, or
 Heat Treated Beryllium Copper
 Gold Plated over Copper or Nickel Plate

Mounting Hardware:

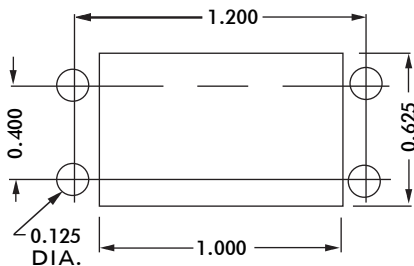
Special Studs, Screws, Lockwashers, and Nuts

Insulation Material:

Choice of **MIL Approved** Thermosetting
 Insulations (See Page 45)

Temperature Ratings: -65°C to +125°C

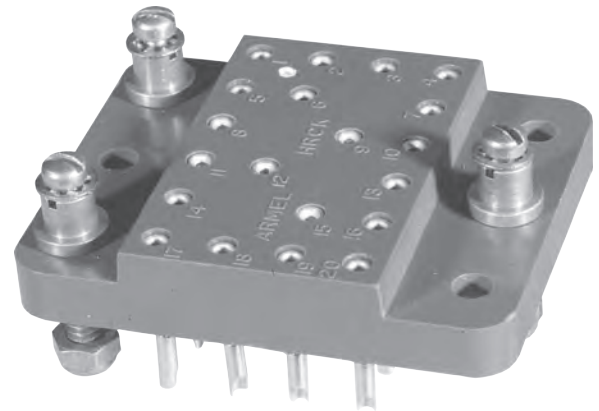
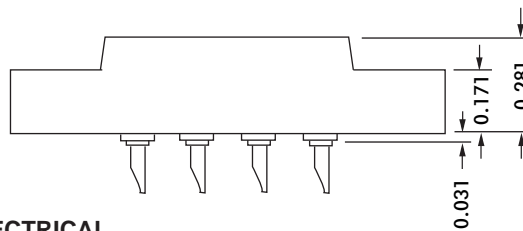
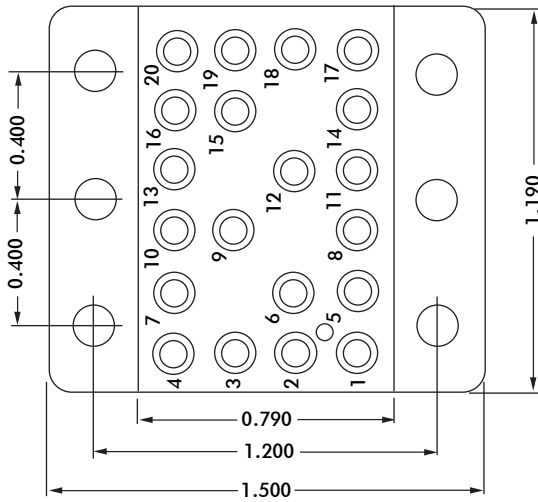
Weight of Socket with Mountings: 0.45 oz.



RECOMMENDED CHASSIS CUT-OUT



HRCK SERIES



CONTACT DATA	CHASSIS MOUNTING DATA					
	CHASSIS THICKNESS	X-DIMENSION	MOUNTING CONFIGURATIONS			
			BELOW CHASSIS	BELOW CHASSIS	ABOVE CHASSIS	
OPEN ENTRY	SOLDER CUP	1/16	.17	HRCK-1		HRCK-2
		3/32	.14		HRCK-31	HRCK-32
		1/8	.12		HRCK-41	HRCK-42
	EYELET	1/16	.17	HRCK-5		HRCK-6
		3/32	.14		HRCK-35	HRCK-36
		1/8	.12		HRCK-45	HRCK-46
STRAIGHT	1/16				HRCK-4	
	3/32				HRCK-34	
	1/8					
CLOSED ENTRY	SOLDER CUP	1/16	.17	HRCK-1K		HRCK-2K
		3/32	.14		HRCK-31K	HRCK-32K
		1/8	.12		HRCK-41K	HRCK-42K
	EYELET	1/16	.17	HRCK-5K		HRCK-6K
		3/32	.14		HRCK-35K	HRCK-36K
		1/8	.12		HRCK-45K	HRCK-46K
STRAIGHT	1/16				HRCK-4K	
	3/32					
	1/8					

ELECTRICAL

- Wire Size:
- Solder Cup Type One #20 AWG
 - Eyelet Type Two #20 AWG or Three #22 AWG
- Current Rating 3 Amperes
- Withstanding Voltage:
- Contact to Contact Sea Level 2700 VRMS Minimum
 - Contact to Ground Sea Level 3300 VRMS Minimum
 - Contact to Contact 70,000 Ft. 560 VRMS Minimum
 - Contact to Ground 70,000 Ft. 675 VRMS Minimum

MECHANICAL

- Creepage Between Contacts 0.17 Minimum
- Air Space Between Contacts 0.11 Minimum
- Contacts to Accept 0.030 ± 0.001 DIA. Pins

Contacts:

- Spring Temper Grade "A" Phosphor Bronze, or Heat Treated Beryllium Copper
- Gold Plated over Copper or Nickel Plate

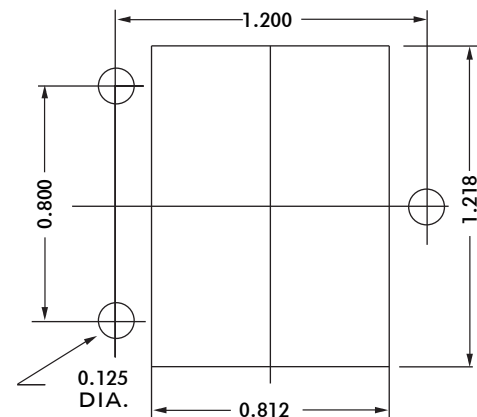
Mounting Hardware:

- Special Studs, Screws, Lockwashers, and Nuts

Insulation Material:

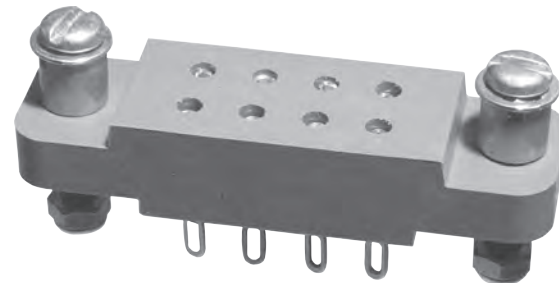
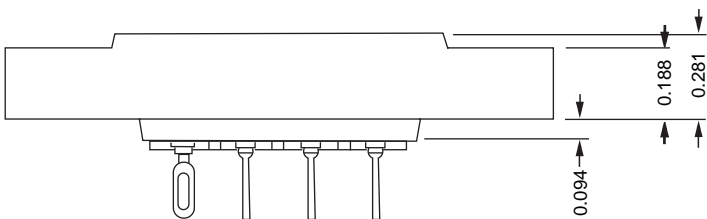
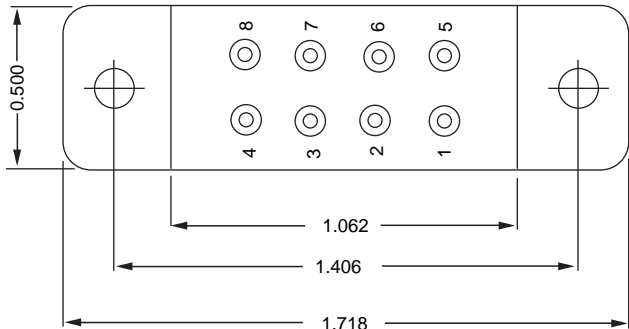
- Choice of **MIL Approved** Thermosetting Insulations (See Page 45)

- Temperature Ratings: -65°C to +125°C
- Weight of Socket with Mountings: 0.60 oz.



RECOMMENDED CHASSIS CUT-OUT

HRCL SERIES



ELECTRICAL

Wire Size:

- Solder Cup Type One #20 AWG
- Eyelet Type. Two #20 AWG or
Three #22 AWG

Current Rating. 10 Amperes

Withstanding Voltage:

- Contact to Contact Sea Level 2700 VRMS Minimum
- Contact to Ground Sea Level 5400 VRMS Minimum
- Contact to Contact 70,000 Ft. 560 VRMS Minimum
- Contact to Ground 70,000 Ft. 975 VRMS Minimum

MECHANICAL

- Creepage Between Contacts 0.16 Minimum
- Air Space Between Contacts. 0.11 Minimum
- Contacts to Accept 0.050 ± 0.001 DIA. Pins

Contacts:

- Spring Temper Grade "A" Phosphor Bronze, or
- Heat Treated Beryllium Copper
- Gold Plated over Copper or Nickel Plate

Mounting Hardware:

- Special Studs, Screws, Lockwashers, and Nuts

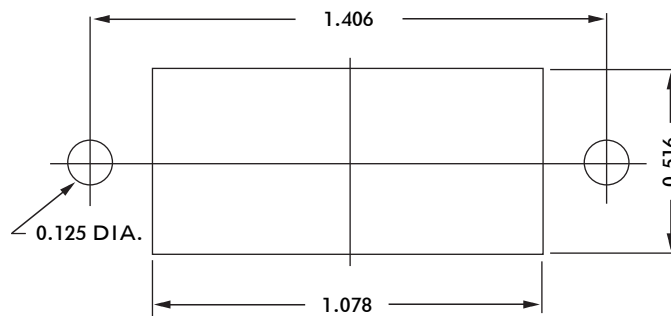
Insulation Material:

- Choice of **MIL Approved** Thermosetting
- Insulations (See Page 45)

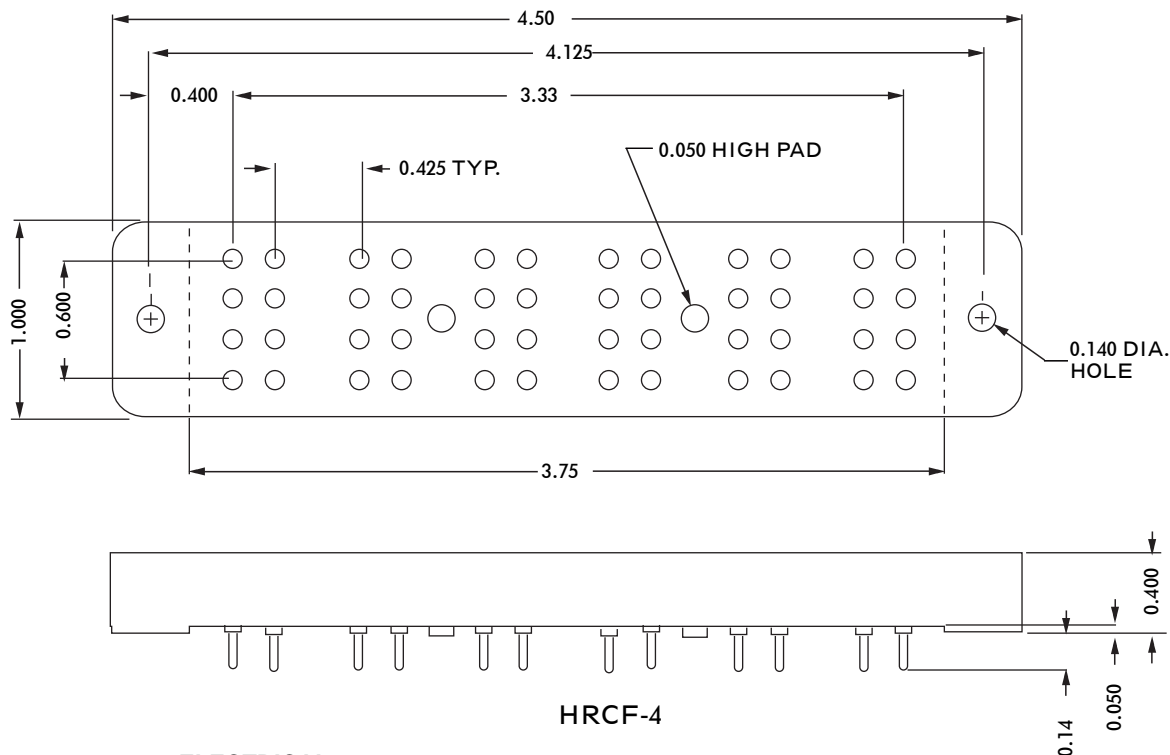
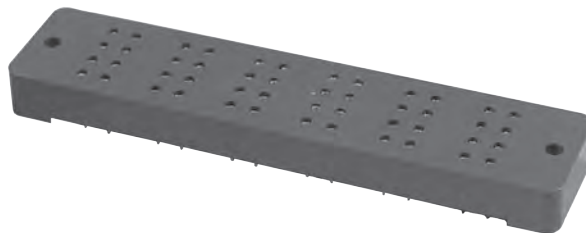
Temperature Ratings: -65°C to +125°C

Weight of Socket with Mountings: 0.39 oz.

CONTACT DATA	CHASSIS MOUNTING DATA				
	CHASSIS THICKNESS	X-DIMENSION	BELOW CHASSIS	BELOW CHASSIS	ABOVE CHASSIS
 SOLDER CUP	1/16	.20		HRCL-1	
	3/32	.17			
	1/8	.14		HRCL-41	
 EYELET	1/16	.20		HRCL-5	
	3/32	.17		HRCL-35	
	1/8	.14		HRCL-45	
 STRAIGHT	1/16	.12			HRCL-44
	3/32	.19			HRCL-64
	1/8				



RECOMMENDED CHASSIS CUT-OUT



HRCF-4

ELECTRICAL

Current Rating 10 Amperes

Withstanding Voltage:

Contact to Contact Sea Level 2700 VRMS Minimum

Contact to Ground Sea Level 2250 VRMS Minimum

Contact to Contact 70,000 Ft. 560 VRMS Minimum

Contact to Ground 70,000 Ft. 500 VRMS Minimum

MECHANICAL

Creepage Between Contacts 0.11 Minimum

Air Space Between Contacts. 0.11 Minimum

Contacts to Accept 0.050±0.001 DIA. Pins

Contacts:

Spring Temper Grade "A" Phosphor Bronze, or

Heat Treated Beryllium Copper

Gold Plated over Copper or Nickel Plate

Mounting Hardware:

Special Studs, Screws, Lockwashers, and Nuts

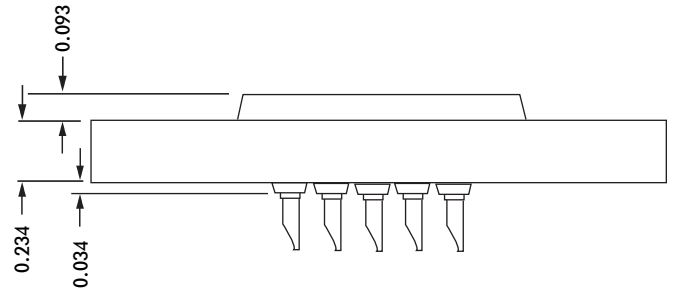
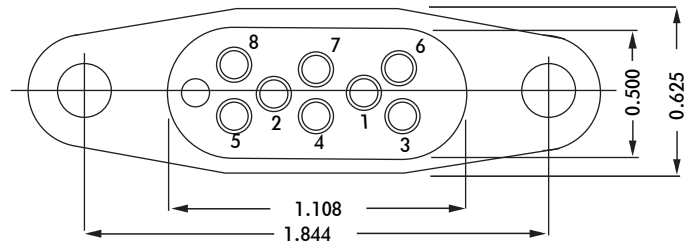
Insulation Material:

Choice of **MIL Approved** Thermosetting

Insulations (See Page 45)

Temperature Ratings: -65°C to +125°C

Weight of Socket with Mountings: 1.85 oz.



CONTACT DATA	CHASSIS MOUNTING DATA				
	CHASSIS THICKNESS	X-DIMENSION	X		
			BELOW CHASSIS	BELOW CHASSIS	ABOVE CHASSIS
 SOLDER CUP	1/16	.12		HRE-1	HRE-2
	3/32	.09		HRE-31	HRE-32
	1/8	.06	HRE-41		HRE-42
 EYELET	1/16	.12		HRE-5	HRE-6
	3/32	.09		HRE-35	HRE-36
	1/8	.06	HRE-45		HRE-46
 TURRET	1/16	.12		HRE-3	HRE-4
	3/32	.09		HRE-33	HRE-34
	1/8	.06	HRE-43		HRE-44
 TAPER PIN	1/16	.12		HRE-7	HRE-8
	3/32	.09		HRE-37	HRE-38
	1/8	.06	HRE-47		HRE-48

ELECTRICAL

Wire Size:

- Solder Cup Type One #20 AWG
- Turret Type Two #20 AWG or
Three #22 AWG
- Eyelet Type Two #20 AWG or
Three #22 AWG
- Taper Type One AMP #37? Taper
Receptacle

Current Rating 7.5 Amperes

Withstanding Voltage:

- Contact to Contact Sea Level2700 VRMS Minimum
- Contact to Ground Sea Level 6300 VRMS Minimum
- Contact to Contact 70,000 Ft. 560 VRMS Minimum
- Contact to Ground 70,000 Ft.1065 VRMS Minimum

MECHANICAL

- Creepage Between Contacts 0.16 Minimum
- Air Space Between Contacts 0.09 Minimum
- Contacts to Accept 0.040 ± 0.001 DIA. Pins

Contacts:

- Spring Temper Grade "A" Phosphor Bronze, or
Heat Treated Beryllium Copper
- Gold Plated over Copper or Nickel Plate

Mounting Hardware:

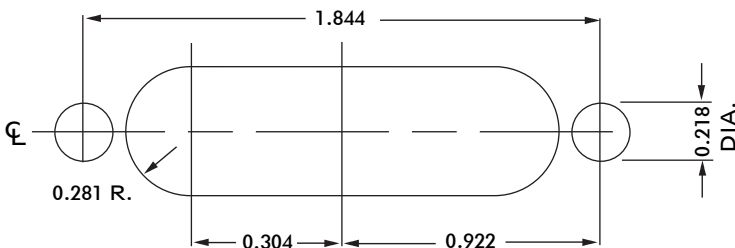
- Special Studs, Screws, Lockwashers, and Nuts

Insulation Material:

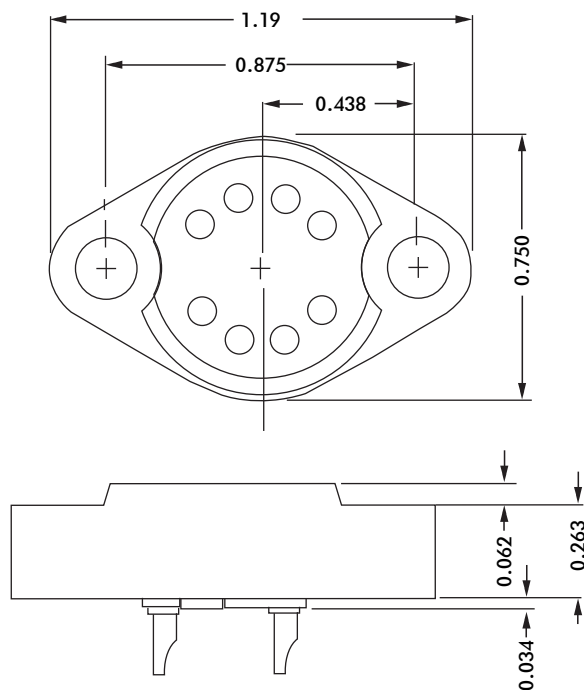
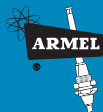
- Choice of **MIL Approved** Thermosetting
Insulations (See Page 45)

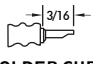



Temperature Ratings: -65°C to +125°C

Weight of Socket with Mountings: 0.69 oz.



RECOMMENDED CHASSIS CUT-OUT



CONTACT DATA	CHASSIS MOUNTING DATA				
	CHASSIS THICKNESS	X-DIMENSION	BELOW CHASSIS	BELOW CHASSIS	ABOVE CHASSIS
 SOLDER CUP	1/16	.22	HRG-1		HRG-2
	3/32				
	1/8				
 EYELET	1/16	.22	HRG-5		HRG-6
	3/32				
	1/8				
 STRAIGHT	1/16	.22	HRG-13		HRG-14
	3/32				
	1/8				
 TURRET	1/16	.22	HRG-3		HRG-4
	3/32				
	1/8				

ELECTRICAL

Wire Size:

- Solder Cup Type One #20 AWG
- Eyelet Type Two #20 AWG
- Three #22 AWG

Current Rating 7.5 Amperes

Withstanding Voltage:

- Contact to Contact Sea Level. 1500 VRMS Minimum
- Contact to Ground Sea Level. 1500 VRMS Minimum
- Contact to Contact 70,000 Ft. 375 VRMS Minimum
- Contact to Ground 70,000 Ft. 375 VRMS Minimum

MECHANICAL

- Creepage Between Contacts. 0.11 Minimum
- Air Space Between Contacts. 0.05 Minimum
- Contacts to Accept 0.040 ± 0.001 DIA. Pins

Contacts:

- Spring Temper Grade "A" Phosphor Bronze, or
- Heat Treated Beryllium Copper
- Gold Plated over Copper or Nickel Plate

Mounting Hardware:

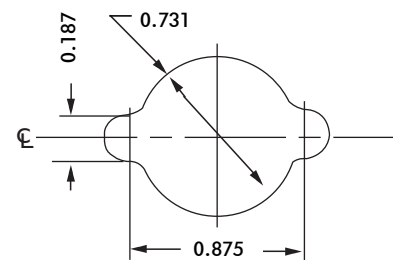
- Special Studs, Screws, Lockwashers, and Nuts

Insulation Material:

- Choice of **MIL Approved** Thermosetting
- Insulations (See Page 45)

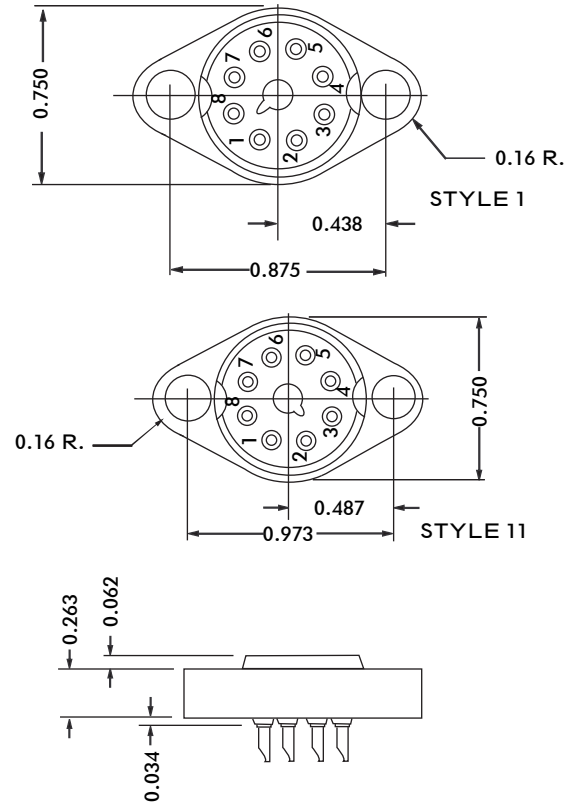
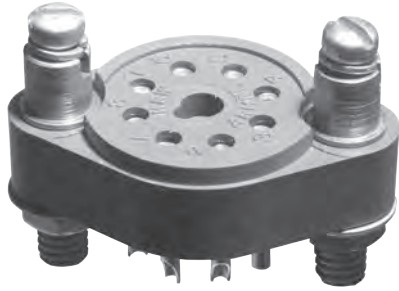
Temperature Ratings: -65°C to +125°C

Weight of Socket with Mountings: 0.45 oz.



RECOMMENDED CHASSIS CUT-OUT

HRW SERIES



CONTACT DATA	CHASSIS MOUNTING DATA					
	CHASSIS THICKNESS	X-DIMENSION	STYLE	MOUNTING STYLE		
				BELOW CHASSIS	BELOW CHASSIS	ABOVE CHASSIS
	1/16	.22	I	HRW-1		HRW-2
			II	HRW-5		HRW-6
	3/32	.19	I		HRW-31	
			II		HRW-35	
	1/8		I			
			II			
	1/16	.22	I	HRW-9		HRW-10
			II	HRW-11		HRW-12
	3/32	.19	I		HRW-39	
			II		HRW-311	
	1/8		I			
			II			
	1/16	.22	I	HRW-3		HRW-4
			II	HRW-7		HRW-8
	3/32	.19	I		HRW-33	
			II		HRW-37	
	1/8		I			
			II			
	1/16	.22	I	HRW-13		HRW-14
			II	HRW-15		HRW-16
	3/32	.19	I		HRW-313	
			II		HRW-315	
	1/8		I			
			II			

ELECTRICAL

Wire Size:

- Solder Cup Type One #20 AWG
- Turret Type Two #20 AWG or Three #22 AWG
- Eyelet Type Two #20 AWG or Three #22 AWG
- Taper Type One AMP ?37? Taper Receptacle

Current Rating 7.5 Amperes

Withstanding Voltage:

- Contact to Contact Sea Level 1800 VRMS Minimum
- Contact to Ground Sea Level 1500 VRMS Minimum
- Contact to Contact 70,000 Ft. 450 VRMS Minimum
- Contact to Ground 70,000 Ft. 375 VRMS Minimum

MECHANICAL

- Creepage Between Contacts 0.14 Minimum
- Air Space Between Contacts 0.06 Minimum
- Contacts to Accept 0.040 ± 0.001 DIA. Pins

Contacts:

- Spring Temper Grade "A" Phosphor Bronze, or Heat Treated Beryllium Copper
- Gold Plated over Copper or Nickel Plate

Mounting Hardware:

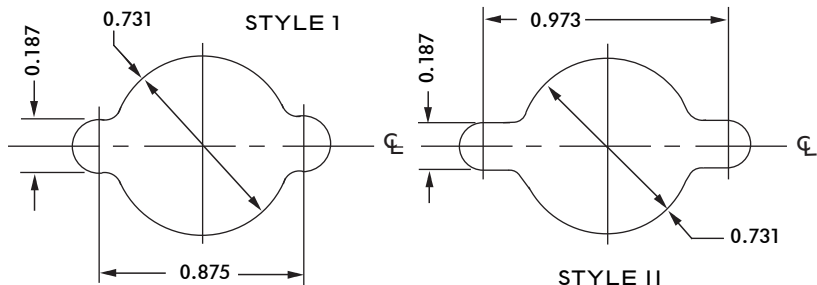
- Special Studs, Screws, Lockwashers, and Nuts

Insulation Material:

- Choice of **MIL Approved** Thermosetting Insulations (See Page 45)

Temperature Ratings: -65°C to +125°C

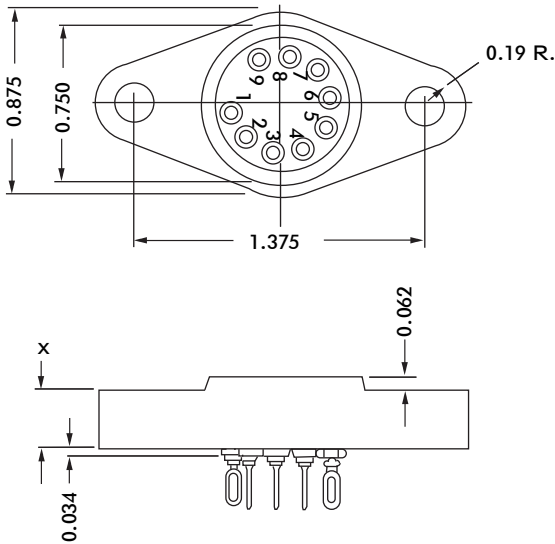
Weight of Socket with Mountings: 0.44 oz.



RECOMMENDED CHASSIS CUT-OUT



HRD SERIES



ELECTRICAL

Wire Size:
 Solder Cup Type One #20 AWG
 Turret Type Two #20 AWG or
 Three #22 AWG
 Eyelet Type Two #20 AWG or
 Three #22 AWG
 Taper Type One AMP ?37? Taper
 Receptacle
 Current Rating 7.5 Amperes
 Withstanding Voltage:
 Contact to Contact Sea Level 1800 VRMS Minimum
 Contact to Ground Sea Level 3300 VRMS Minimum
 Contact to Contact 70,000 Ft. 450 VRMS Minimum
 Contact to Ground 70,000 Ft. 675 VRMS Minimum

MECHANICAL

Creepage Between Contacts 0.12 Minimum
 Air Space Between Contacts 0.06 Minimum
 Contacts to Accept 0.040 ± 0.001 DIA. Pins

Contacts:

Spring Temper Grade "A" Phosphor Bronze, or
 Heat Treated Beryllium Copper
 Gold Plated over Copper or Nickel Plate

Mounting Hardware:

Special Studs, Screws, Lockwashers, and Nuts

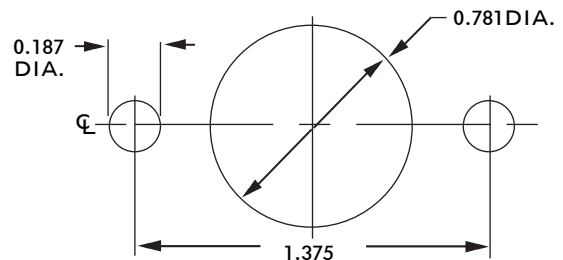
Insulation Material:

Choice of **MIL Approved** Thermosetting
 Insulations (See Page 45)

Temperature Ratings: -65°C to +125°C

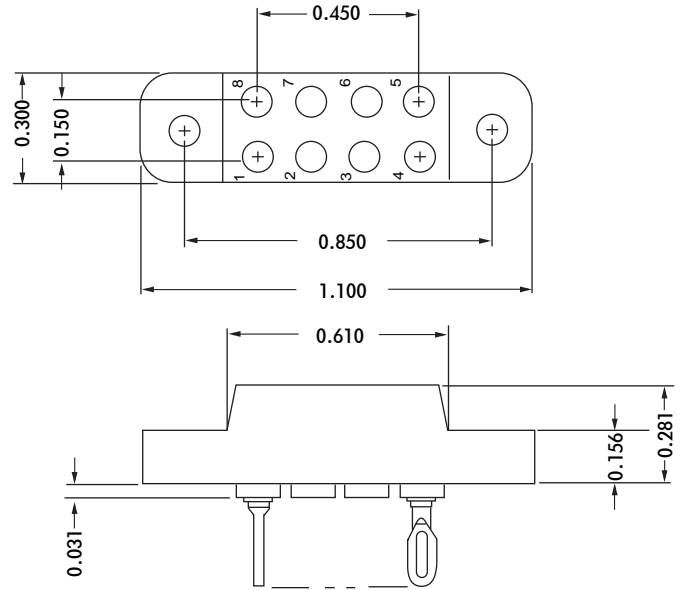
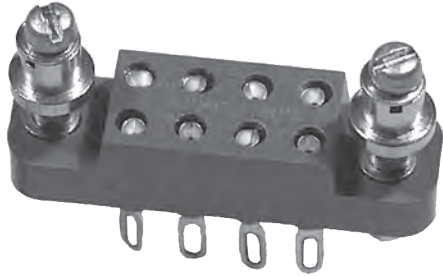
Weight of Socket with Mountings: 0.70 oz.

CONTACT DATA	CHASSIS MOUNTING DATA			
	CHASSIS THICKNESS	X-DIMENSION	CONTACT DIMENSIONS	
			BELOW CHASSIS	ABOVE CHASSIS
	1/16	.28	HRD-1	HRD-2
	3/32	.25	HRD-31	HRD-32
	1/8	.25	HRD-41	
	1/16	.28	HRD-5	HRD-6
	3/32	.25	HRD-35	HRD-36
	1/8	.25	HRD-45	
	1/16	.28	HRD-3	HRD-4
	3/32	.25	HRD-33	HRD-34
	1/8	.25	HRD-43	
	1/16	.28	HRD-7	HRD-8
	3/32	.25	HRD-37	HRD-38
	1/8	.25	HRD-47	



RECOMMENDED CHASSIS CUT-OUT

HRFA SERIES



CONTACT DATA		CHASSIS MOUNTING DATA			
		CHASSIS THICKNESS	X-DIMENSION	BELOW CHASSIS	ABOVE CHASSIS
SOLDER CUP		1/16	.17	HRFA - 1	HRFA - 2
		3/32	.14		
		1/8	.12		
EYELET		1/16	.17	HRFA - 5	HRFA - 6
		3/32	.14		
		1/8	.12		
STRAIGHT		1/16			HRFA - 4
		3/32			
		1/8			
WIRE WRAP		1/16	.17	HRFA - 23	
		3/32	.14		
		1/8	.12		
WIRE WRAP		1/16	.17	HRFA - 13	
		3/32	.14		
		1/8	.12		

ELECTRICAL:

Wire Size

Solder Cup Type. One #20 AWG
 Eyelet Type. Two #20 AWG or
 Three #22 AWG

Current Rating. 3 Amperes

Withstanding Voltage:

Contact to Contact Sea Level. . .1200 VRMS Minimum
 Contact to Ground Sea Level. . .3300 VRMS Minimum
 Contact to Contact 70,000 Ft. . .500 VRMS Minimum
 Contact to Ground 70,000Ft. . . .675 VRMS Minimum

MECHANICAL:

Creepage Between Contacts. 0.10 Minimum
 Air Space Between Contacts. 0.06 Minimum

+0.003

Contacts to Accept 0.020 - 0.001 DIA. Pins

Contacts:

Spring Temper Grade "A" Phosphor Bronze or
 Heat Treated Beryllium Copper
 Gold Plated over Copper or Nickel Plate

Mounting Hardware:

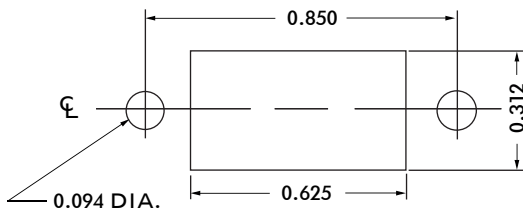
Special Studs, Screws, Lockwashers, and Nuts

Insulation Material

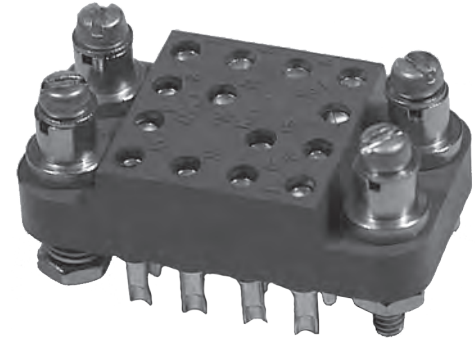
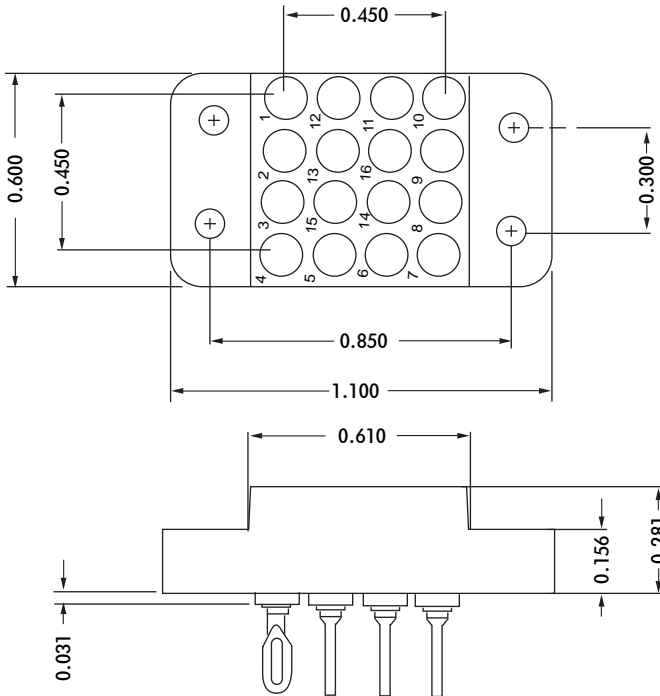
Choice of **MIL Approved** Thermosetting
 Insulations (See Page 45)

Temperature Ratings: -65°C to +125°C

Weight of Socket with Mountings: 0.25 oz.



RECOMMENDED CHASSIS CUT-OUT



ELECTRICAL:

Wire Size

Solder Cup Type. One #20 AWG
 Eyelet Type. Two #20 AWG or
 Three #22 AWG

Current Rating. 3 Amperes

Withstanding Voltage:

Contact to Contact Sea Level. . . 1200 VRMS Minimum
 Contact to Ground Sea Level. . . 3300 VRMS Minimum
 Contact to Contact 70,000 Ft. . . 500 VRMS Minimum
 Contact to Ground 70,000 Ft. . . 675 VRMS Minimum

MECHANICAL:

Creepage Between Contacts. 0.10 Minimum

Air Space Between Contacts. 0.06 Minimum

+0.003

Contacts to Accept 0.020 - 0.001 DIA. Pins

Contacts:

Spring Temper Grade "A" Phosphor Bronze or
 Heat Treated Beryllium Copper
 Gold Plated over Copper or Nickel Plate

Mounting Hardware:

Special Studs, Screws, Lockwashers, and Nuts

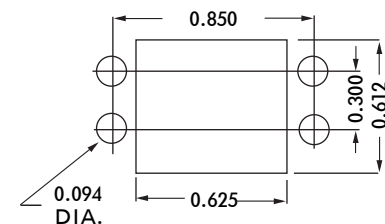
Insulation Material

Choice of **MIL Approved** Thermosetting
 Insulations (See Page 45)

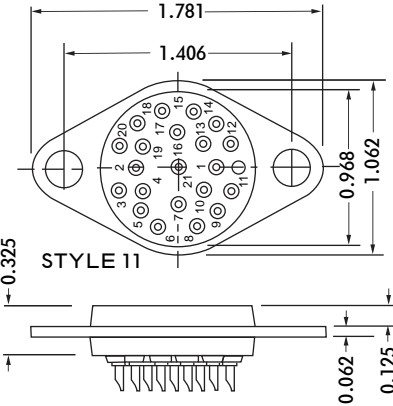
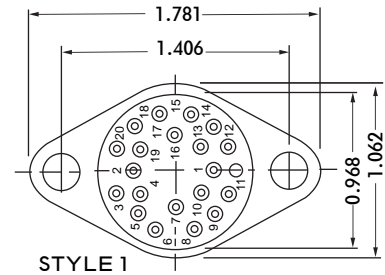
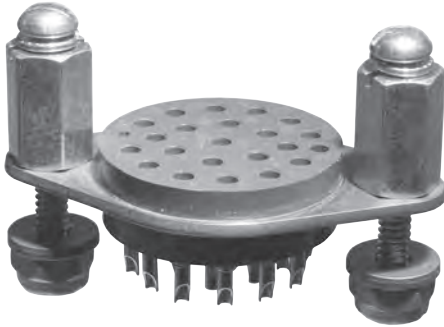
Temperature Ratings: -65°C to +125°C

Weight of Socket with Mountings: 0.40 oz.

		CHASSIS MOUNTING DATA				
		CHASSIS THICKNESS	X-DIMENSION	NO. OF CONTACTS		
CONTACT DATA	SOLDER CUP	1/16	.17	14	HRFB - 1	HRFB - 2
				16	HRFB - 601	HRFB - 602
		3/32	.14	14		
				16		
		1/8	.12	14		
				16		
	EYELET	1/16	.17	14	HRFB - 5	HRFB - 6
				16	HRFB - 605	HRFB - 606
		3/32	.14	14		
				16		
		1/8	.12	14		
				16		
STRAIGHT	1/16	.17	14		HRFB - 4	
			16		HRFB - 614	
	3/32	.14	14			
			16			
	1/8	.12	14			
			16			
WIRE WRAP 0.045 SQ.	1/16	.17	14	HRFB - 23		
			16	HRFB - 623		
	3/32	.14	14			
			16			
	1/8	.12	14			
			16			
WIRE WRAP 0.025 SQ.	1/16	.17	14	HRFB - 13		
			16	HRFB - 613		
	3/32	.14	14			
			16			
	1/8	.12	14			
			16			



RECOMMENDED CHASSIS CUT-OUT



CONTACT DATA		CHASSIS MOUNTING DATA				
		CHASSIS THICKNESS	STYLE	NO. OF CONTACTS		
OPEN ENTRY	SOLDER CUP	1/16	II	21	HF-50	HF-50
			I	20	HF-59	HF-59
		1/16	II	15	HF-53	HF-53
			I	14	HF-62	HF-62
		1/16	II	9	HF-56	HF-56
			I	8	HF-65	HF-65
	TURRET	1/16	II	21	HF-51	HF-51
			I	20	HF-60	HF-60
		1/16	II	15	HF-54	HF-54
			I	14	HF-63	HF-63
		1/16	II	9	HF-57	HF-57
			I	8	HF-66	HF-66
EYELET	1/16	II	21	HF-52	HF-52	
		I	20	HF-61	HF-61	
	1/16	II	15	HF-55	HF-55	
		I	14	HF-64	HF-64	
	1/16	II	9	HF-58	HF-58	
		I	8	HF-67	HF-67	
CLOSED ENTRY	SOLDER CUP	1/16	II	21	HF-50K	HF-50K
			I	20	HF-59K	HF-59K
		1/16	II	15	HF-53K	HF-53K
			I	14	HF-62K	HF-62K
		1/16	II	9	HF-56K	HF-56K
			I	8	HF-65K	HF-65K
	EYELET	1/16	II	21	HF-52K	HF-52K
			I	20	HF-61K	HF-61K
		1/16	II	15	HF-55K	HF-55K
			I	14	HF-64K	HF-64K
		1/16	II	9	HF-58K	HF-58K
			I	8	HF-67K	HF-67K

ELECTRICAL

Wire Size:

Solder Cup Type One #20 AWG
Turret Type Two #20 AWG or Three #22 AWG

Eyelet Type Two #20 AWG or Three #22 AWG

Taper Type One AMP ?37? Taper Receptacle

Current Rating 7.5 Amperes

Withstanding Voltage:

Contact to Contact Sea Level 1800 VRMS Minimum
Contact to Ground Sea Level 3300 VRMS Minimum
Contact to Contact 70,000 Ft. 450 VRMS Minimum
Contact to Ground 70,000 Ft. 675 VRMS Minimum

MECHANICAL

Creepage Between Contacts 0.12 Minimum

Air Space Between Contacts 0.06 Minimum

Contacts to Accept 0.040 ± 0.001 DIA. Pins

Contacts:

Spring Temper Grade "A" Phosphor Bronze, or Heat Treated Beryllium Copper
Gold Plated over Copper or Nickel Plate

Mounting Hardware:

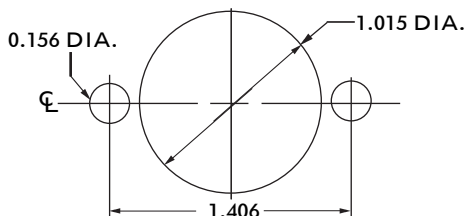
Special Studs, Screws, Lockwashers, and Nuts

Insulation Material:

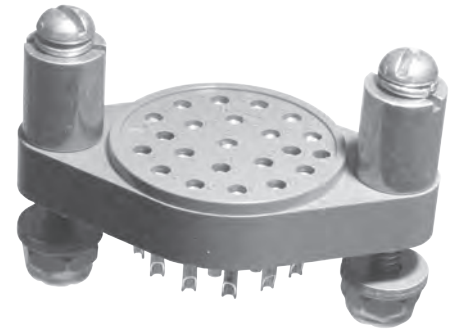
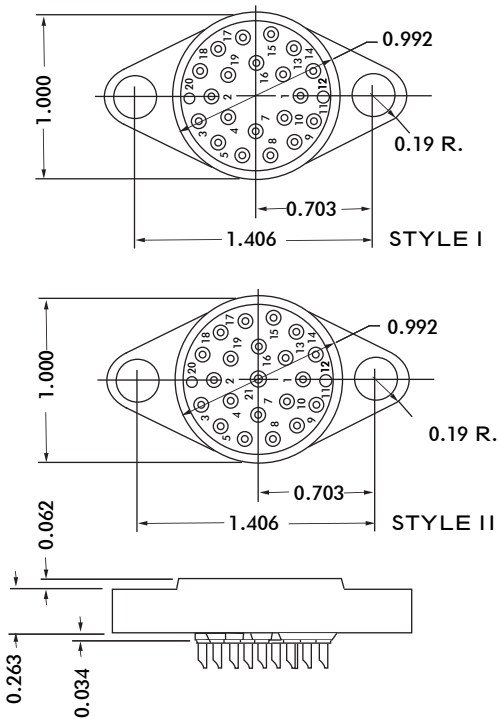
Choice of **MIL Approved** Thermosetting Insulations (See Page 45)

Temperature Ratings: -65°C to +125°C

Weight of Socket with Mountings: 1.10 oz.



RECOMMENDED CHASSIS CUT-OUT



ELECTRICAL

Wire Size:

- Solder Cup Type One #20 AWG
- Turret Type Two #20 AWG or
Three #22 AWG
- Eyelet Type Two #20 AWG or
Three #22 AWG
- Taper Type One AMP ?37? Taper
Receptacle

Current Rating 7.5 Amperes

Withstanding Voltage:

- Contact to Contact Sea Level 1800 VRMS Minimum
- Contact to Ground Sea Level 3300 VRMS Minimum
- Contact to Contact 70,000 Ft. 450 VRMS Minimum
- Contact to Ground 70,000 Ft. 675 VRMS Minimum

MECHANICAL

- Creepage Between Contacts 0.12 Minimum
- Air Space Between Contacts 0.06 Minimum
- Contacts to Accept 0.040 ± 0.001 DIA. Pins

Contacts:

- Spring Temper Grade "A" Phosphor Bronze, or
- Heat Treated Beryllium Copper
- Gold Plated over Copper or Nickel Plate

Mounting Hardware:

- Special Studs, Screws, Lockwashers, and Nuts

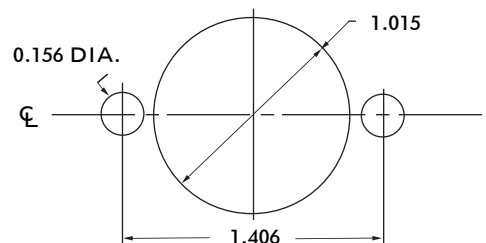
Insulation Material:

- Choice of **MIL Approved** Thermosetting
- Insulations (See Page 45)

Temperature Ratings: -65°C to +125°C

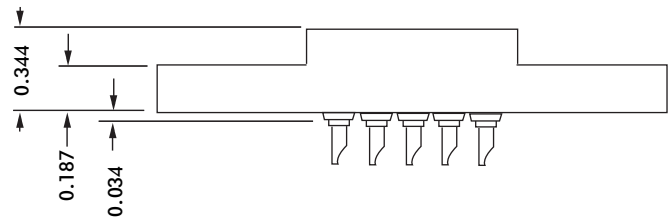
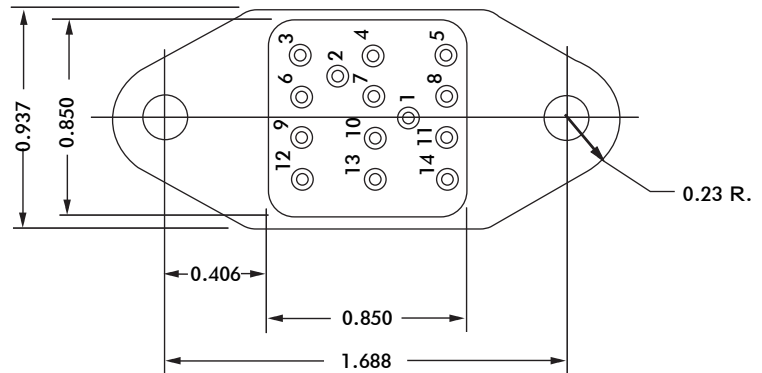
Weight of Socket with Mountings: 0.65 oz.

CONTACT DATA	CHASSIS MOUNTING DATA					
	CHASSIS THICKNESS	STYLE	NO. OF CONTACTS	CONTACT MOUNTING		
				BELOW CHASSIS	BELOW CHASSIS	ABOVE CHASSIS
	1/16	II	21	HR-50		HR-50
		I	20	HR-59		HR-59
	3/32	II	21		HR-350	
		I	20		HR-359	
	1/16	II	15	HR-53		HR-53
		I	14	HR-62		HR-62
SOLDER CUP	1/16	II	9	HR-56		HR-56
		I	8	HR-65		HR-65
	1/16	II	21	HR-51		HR-51
		I	20	HR-60		HR-60
	3/32	II	21		HR-351	
		I	20		HR-360	
	1/16	II	15	HR-54		HR-54
		I	14	HR-63		HR-63
	1/16	II	9	HR-57		HR-57
		I	8	HR-66		HR-66
	3/32	II	21		HR-352	
		I	20		HR-361	
TURRET	1/16	II	21	HR-52		HR-52
		I	20	HR-61		HR-61
	3/32	II	21		HR-352	
		I	20		HR-361	
	1/16	II	15	HR-55		HR-55
		I	14	HR-64		HR-64
	1/16	II	9	HR-58		HR-58
		I	8	HR-67		HR-67
	3/32	II	21	HR-68		HR-68
		I	20	HR-71		HR-71
	1/16	II	21			
		I	20			
EYELET	1/16	II	15			
		I	14			
	3/32	II	21			
		I	20			
	1/16	II	15			
		I	14			
	1/16	II	9			
		I	8			
	3/32	II	21			
		I	20			
	1/16	II	15			
		I	14			
TAPER PIN	1/16	II	9			
		I	8			

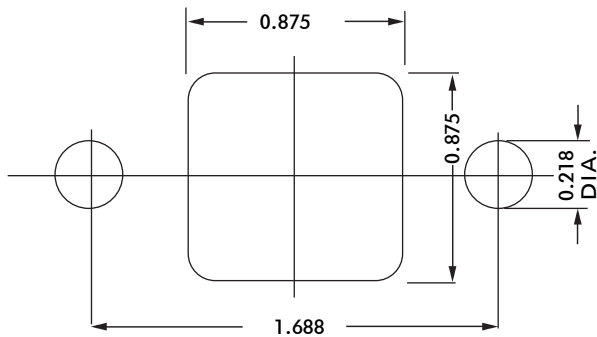


RECOMMENDED CHASSIS CUT-OUT

HRB SERIES



CONTACT DATA	CHASSIS MOUNTING DATA				
	CHASSIS THICKNESS	X-DIMENSION	X		
			BELOW CHASSIS	ABOVE CHASSIS	
 SOLDER CUP	1/16	.12		HRB-1	HRB-2
	3/32	.09		HRB-31	HRB-32
	1/8	.06	HRB-41		HRB-42
 EYELET	1/16	.12		HRB-5	HRB-6
	3/32	.09		HRB-35	HRB-36
	1/8	.06	HRB-45		HRB-46
 TURRET	1/16	.12		HRB-3	HRB-4
	3/32	.09		HRB-33	HRB-34
	1/8	.06	HRB-43		HRB-44
 TAPER PIN	1/16	.12		HRB-7	HRB-8
	3/32	.09		HRB-37	HRB-38
	1/8	.06	HRB-47		HRB-48



RECOMMENDED CHASSIS CUT-OUT

ELECTRICAL

Wire Size:

Solder Cup Type One #20 AWG
Turret Type Two #20 AWG or
Three #22 AWG

Eyelet Type Two #20 AWG or
Three #22 AWG

Taper Type One AMP ?37? Taper
Receptacle

Current Rating 7.5 Amperes

Withstanding Voltage:

Contact to Contact Sea Level 2700 VRMS Minimum
Contact to Ground Sea Level 5400 VRMS Minimum
Contact to Contact 70,000 Ft. 560 VRMS Minimum
Contact to Ground 70,000 Ft. 975 VRMS Minimum

MECHANICAL

Creepage Between Contacts 0.16 Minimum

Air Space Between Contacts 0.09 Minimum

Contacts to Accept 0.040 ± 0.001 DIA. Pins

Contacts:

Spring Temper Grade "A" Phosphor Bronze, or
Heat Treated Beryllium Copper
Gold Plated over Copper or Nickel Plate

Mounting Hardware:

Special Studs, Screws, Lockwashers, and Nuts

Insulation Material:

Choice of **MIL Approved** Thermosetting
Insulations (See Page 45)

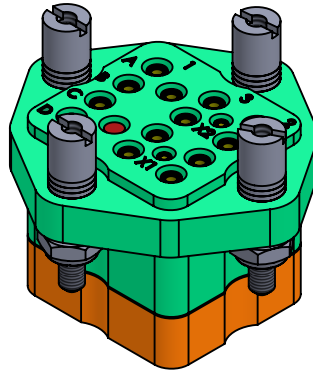
Temperature Ratings: -65°C to +125°C

Weight of Socket with Mountings: 0.96 oz.

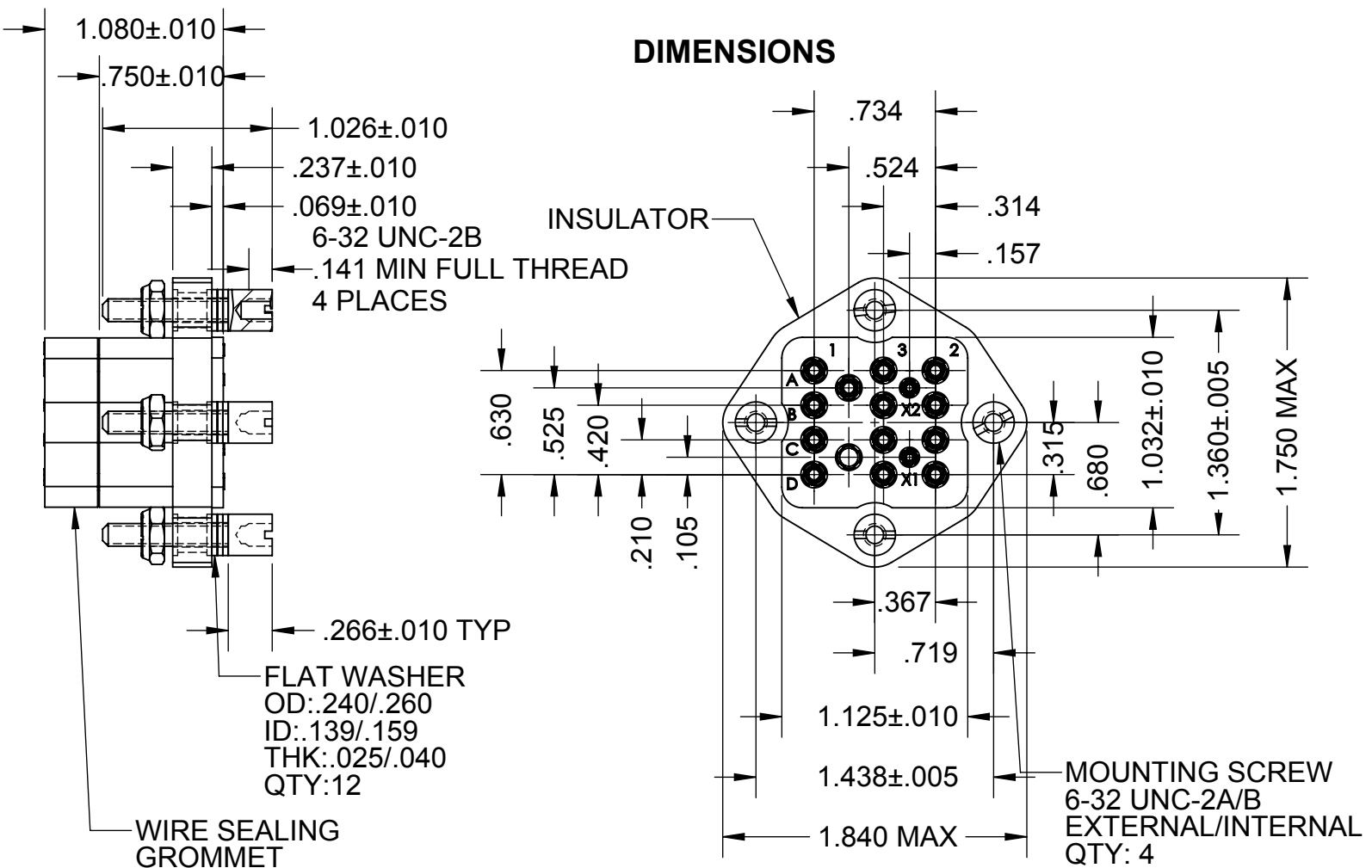


HRGD SERIES

FOR USE WITH MS27254-1 & -2 RELAYS FEATURING CRIMP, REMOVABLE CONTACTS AND POLARIZING KEY

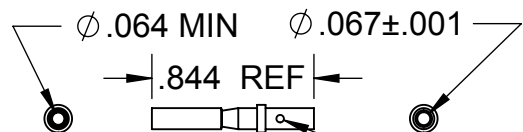


DIMENSIONS



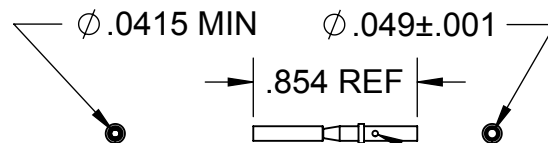
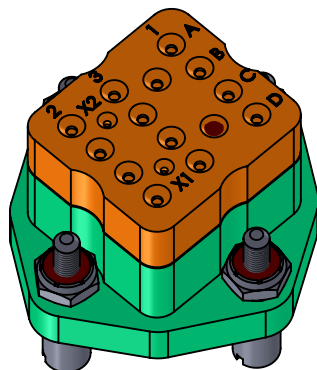
UNLESS OTHERWISE SPECIFIED, TOLERANCES FOR .XXX ARE ± .003

FOR MECHANICAL AND ELECTRICAL SPECIFICATIONS SEE PAGE 35



Ø .039 INSPECTION HOLE

16 GAUGE CONTACT DETAIL



Ø .029 INSPECTION HOLE

20 GAUGE CONTACT DETAIL

SPECIFICATIONS

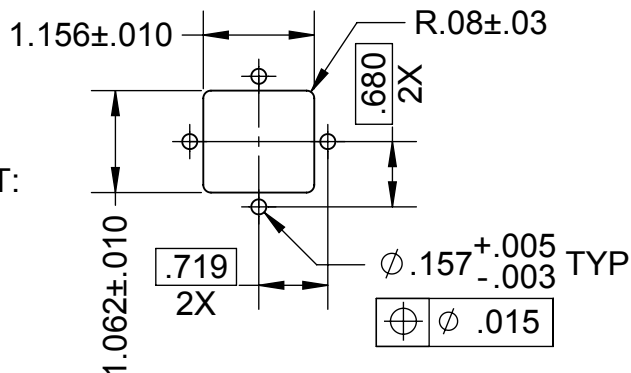
ELECTRICAL

Current Rating.....10 Amperes
 Dielectric Withstanding Voltage.....
 Contact to Contact
 Sea Level.....1500 VRMS @ 60 Hz

MECHANICAL

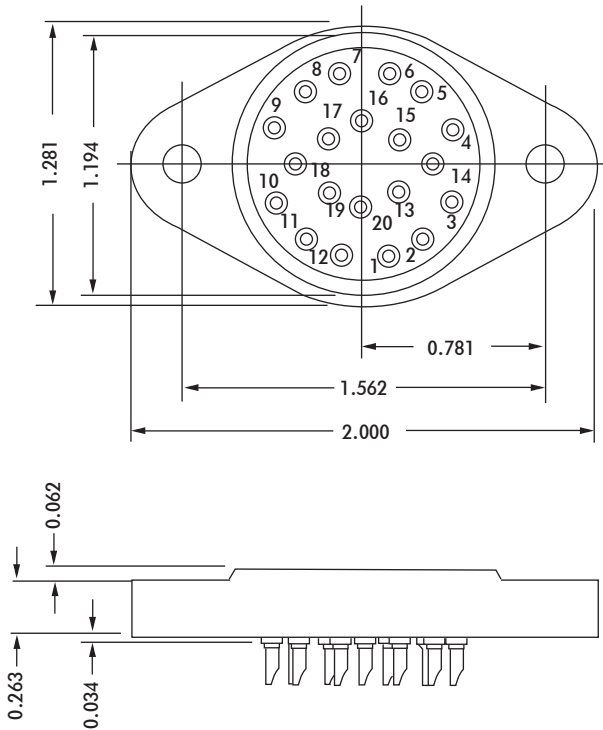
Contact Mating Pin Size.....14@ Ø .062±.001, 2@ Ø .040±.001
 Wiring Terminal Accommodation.....14@ 16 AWG, 2@ 20 AWG
 Contact Material & Finish.....Per Mil-C-39029/32-242 for Ø .040±.001 & Mil-C-39029/32-247 for Ø .062±.001 Mating Pin Size
 Contact Plug Material & Finish.....Aluminum Alloy, 6061-T6511 Per AMS-QQ-A-200/8, Anodized Per MIL-A-8625, Type II, Class 2, Color: Red
 16 & 20 Gauge Contact Retaining Clips Material and Finish.....Beryllium Copper Alloy 173, Heat Treated To Condition HT
 Mounting Screw Insert Material and Finish.....Brass, C36000, H02 Per ASTM B-36, Nickel Flash, .0001 Inches Minimum Thickness
 Lock Nuts Material & Finish.....Per NASM21083-C06
 All Other Metal Hardware Material & Finish.....CRES Per ASTM A582, Type 303, Passivated Per AMS2700
 Wire Sealing Grommet Material & Finish.....SILASTIC® FL 45-9001, Color: Orange
 Insulation Material.....Short Glass Fiber Filled Diallyl Phthalate per ASTM D5948, Type SDG-F, Color: Green
 Grommet/Insulator Adhesive.....Q4-2817 Fluorosilicone Sealant
 Contact Crimping Tool.....M22520/1-01
 Contact Installation Tool.....For M39029/32-242 Use M81969/17-03, For M39029/32-247 Use M81969/17-04.
 Contact Removal Tool.....For M39029/32-242 Use M81969/19-07, For M39029/32-247 Use M81969/19-08.

RECOMMENDED CHASSIS CUT-OUT:





HRS SERIES



CONTACT DATA	CHASSIS MOUNTING DATA				
	CHASSIS THICKNESS	X-DIMENSION	X		
			BELOW CHASSIS	BELOW CHASSIS	ABOVE CHASSIS
$\frac{3}{16}$	$\frac{1}{16}$.12		HRS - 1	HRS - 2
	$\frac{3}{32}$.09		HRS - 31	HRS - 32
	$\frac{1}{8}$.06	HRS - 41		HRS - 42
$\frac{1}{4}$	$\frac{1}{16}$.12		HRS - 5	HRS - 6
	$\frac{3}{32}$.09		HRS - 35	HRS - 36
	$\frac{1}{8}$.06	HRS - 45		HRS - 46
$\frac{1}{4}$	$\frac{1}{16}$.12		HRS - 3	HRS - 4
	$\frac{3}{32}$.09		HRS - 33	HRS - 34
	$\frac{1}{8}$.06	HRS - 43		HRS - 44
$\frac{1}{4}$	$\frac{1}{16}$.12		HRS - 7	HRS - 8
	$\frac{3}{32}$.09		HRS - 37	HRS - 38
	$\frac{1}{8}$.06	HRS - 47		HRS - 48
$\frac{3}{16}$	$\frac{1}{16}$				HRS - 10
	$\frac{3}{32}$				
	$\frac{1}{8}$				

ELECTRICAL

- Wire Size:
 Solder Cup Type One #20 AWG
 Turret Type Two #20 AWG or
 Three #22 AWG
 Eyelet Type Two #20 AWG or
 Three #22 AWG
 Taper Type One AMP "37" Taper
 Receptacle
 Current Rating 7.5 Amperes
 Withstanding Voltage:
 Contact to Contact Sea Level 2700 VRMS Minimum
 Contact to Ground Sea Level 2700 VRMS Minimum
 Contact to Contact 70,000 Ft.560 VRMS Minimum
 Contact to Ground 70,000 Ft.560 VRMS Minimum

MECHANICAL

- Creepage Between Contacts 0.16 Minimum
 Air Space Between Contacts 0.09 Minimum
 Contacts to Accept 0.040 ± 0.001 DIA. Pins

Contacts:

- Spring Temper Grade "A" Phosphor Bronze, or Heat Treated Beryllium Copper
- Gold Plated over Copper or Nickel Plate

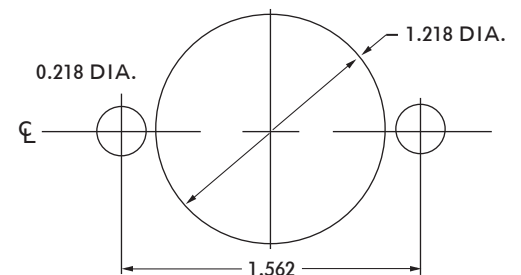
Mounting Hardware:

- Special Studs, Screws, Lockwashers, and Nuts

Insulation Material:

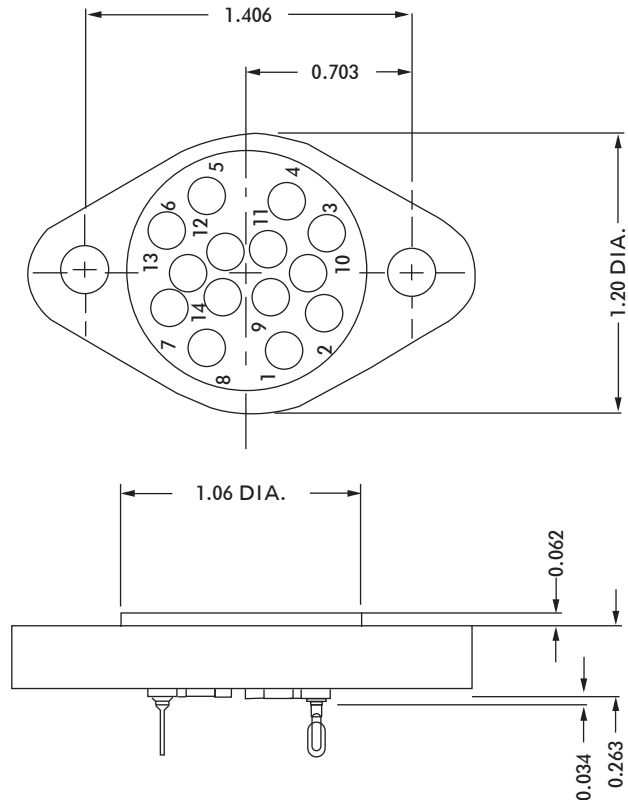
- Choice of "MIL Approved" Thermosetting Insulations (See Page 45)

- Temperature Ratings: -65°C to +125°C
 Weight of Socket with Mountings: 0.96 oz.



RECOMMENDED CHASSIS CUT-OUT

HRSA SERIES



CLOSED ENTRY	CONTACT DATA	CHASSIS MOUNTING DATA				
		CHASSIS THICKNESS	X-DIMENSION	MOUNTING TYPE		
				BELOW CHASSIS	BELOW CHASSIS	ABOVE CHASSIS
 SOLDER CUP	1/16	.12		HRSA - 1K		
	3/32	.09		HRSA - 31K		
	1/8	.06	HRSA - 41K			
 EYELET	1/16	.12		HRSA - 5K	HRSA - 6K	
	3/32	.09		HRSA - 35K		
	1/8	.06	HRSA - 45K			
 STRAIGHT	1/16				HRSA - 10K	
	3/32					
	1/8					

ELECTRICAL

Wire Size:

Solder Cup Type One #20 AWG
 Eyelet Type Two #20 AWG or
 Three #22 AWG

Current Rating 7.5 Amperes

Withstanding Voltage:

Contact to Contact Sea Level 2700 VRMS Minimum
 Contact to Ground Sea Level 2700 VRMS Minimum
 Contact to Contact 70,000 Ft. 560 VRMS Minimum
 Contact to Ground 70,000 Ft. 560 VRMS Minimum

MECHANICAL

Creepage Between Contacts 0.16 Minimum
 Air Space Between Contacts 0.10 Minimum
 Contacts to Accept 0.040 ± 0.001 DIA. Pins

Contacts:

Spring Temper Grade "A" Phosphor Bronze, or
 Heat Treated Beryllium Copper
 Gold Plated over Copper or Nickel Plate

Mounting Hardware:

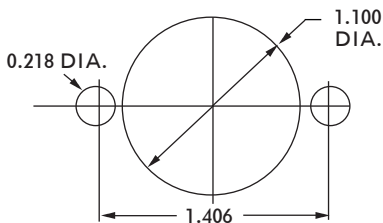
Special Studs, Screws, Lockwashers, and Nuts

Insulation Material:

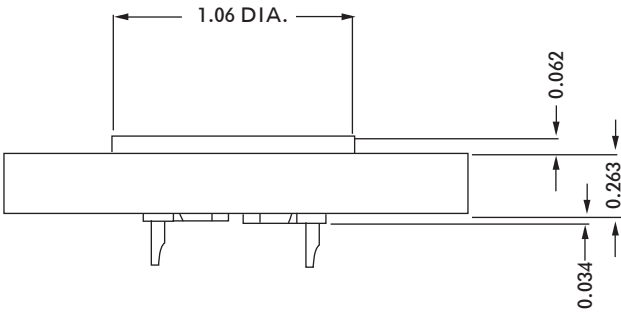
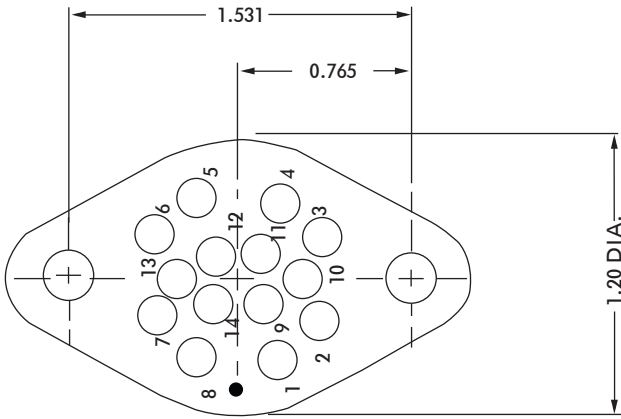
Choice of "MIL Approved" Thermosetting
 Insulations (See Page 45)

Temperature Ratings: -65°C to +125°C

Weight of Socket with Mountings: 0.95 oz.



RECOMMENDED CHASSIS CUT-OUT



ELECTRICAL

Wire Size:

- Solder Cup Type One #20 AWG
- Eyelet Type Two #20 AWG or
Three #22 AWG

Current Rating 7.5 Amperes

Withstanding Voltage:

- Contact to Contact Sea Level 2700 VRMS Minimum
- Contact to Ground Sea Level 2700 VRMS Minimum
- Contact to Contact 70,000 Ft. 560 VRMS Minimum
- Contact to Ground 70,000 Ft. 560 VRMS Minimum

MECHANICAL

- Creepage Between Contacts 0.16 Minimum
- Air Space Between Contacts 0.10 Minimum
- Contacts to Accept 0.040 ± 0.001 DIA. Pins

Contacts:

- Spring Temper Grade "A" Phosphor Bronze, or
Heat Treated Beryllium Copper
- Gold Plated over Copper or Nickel Plate

Mounting Hardware:

- Special Studs, Screws, Lockwashers, and Nuts

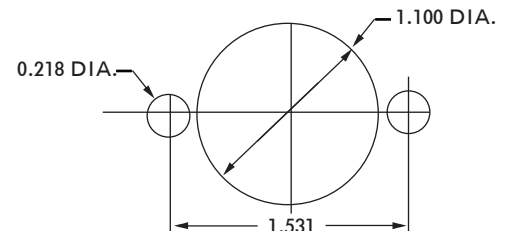
Insulation Material:

- Choice of "MIL Approved" Thermosetting
Insulations (See Page 45)

Temperature Ratings: -65°C to +125°C

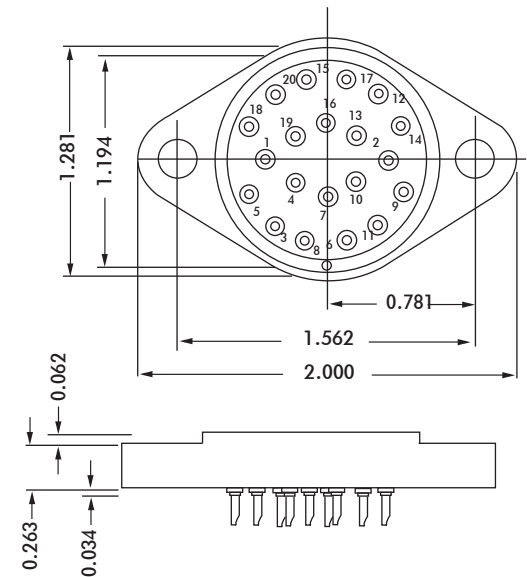
Weight of Socket with Mountings: 0.95 oz.

CLOSED ENTRY	CONTACT DATA	CHASSIS MOUNTING DATA		
		CHASSIS THICKNESS	X-DIMENSION	
 SOLDER CUP	1/16	.12		HRSB - 1K
	3/32	.09		HRSB - 31K
	1/8			
 EYELET	1/16	.12		HRSB - 5K
	3/32	.09		HRSB - 35K
	1/8	.06	HRSB - 45K	
 STRAIGHT	7/32	.12		HRSB - 4K
	3/32			HRSB - 10K
	1/8			

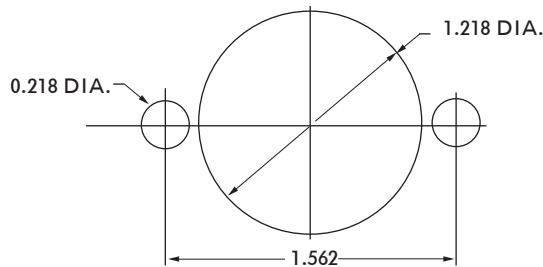


RECOMMENDED CHASSIS CUT-OUT

HRSE SERIES



CONTACT DATA	CHASSIS MOUNTING DATA				
	CHASSIS THICKNESS	X-DIMENSION	BELOW CHASSIS	BELOW CHASSIS	ABOVE CHASSIS
 SOLDER CUP	$\frac{1}{16}$.12		HRSE - 1	HRSE - 2
	$\frac{3}{32}$.09		HRSE - 31	HRSE - 32
	$\frac{1}{8}$.06	HRSE - 41		HRSE - 42
 EYELET	$\frac{1}{16}$.12		HRSE - 5	HRSE - 6
	$\frac{3}{32}$.09		HRSE - 35	HRSE - 36
	$\frac{1}{8}$.06	HRSE - 45		HRSE - 46
 TURRET	$\frac{1}{16}$.12		HRSE - 3	HRSE - 4
	$\frac{3}{32}$.09		HRSE - 33	HRSE - 34
	$\frac{1}{8}$.06	HRSE - 43		HRSE - 44
 TAPER PIN	$\frac{1}{16}$.12		HRSE - 7	HRSE - 8
	$\frac{3}{32}$.09		HRSE - 37	HRSE - 38
	$\frac{1}{8}$.06	HRSE - 47		HRSE - 48



RECOMMENDED CHASSIS CUT-OUT

ELECTRICAL

Wire Size:

- Solder Cup Type One #20 AWG
- Turret Type Two #20 AWG or Three #22 AWG
- Eyelet Type Two #20 AWG or Three #22 AWG
- Taper Type One AMP "37" Taper Receptacle

Current Rating 7.5 Amperes

Withstanding Voltage:

- Contact to Contact Sea Level 2700 VRMS Minimum
- Contact to Ground Sea Level 2700 VRMS Minimum
- Contact to Contact 70,000 Ft. 560 VRMS Minimum
- Contact to Ground 70,000 Ft. 560 VRMS Minimum

MECHANICAL

- Creepage Between Contacts 0.16 Minimum
- Air Space Between Contacts 0.09 Minimum
- Contacts to Accept 0.040 ±0.001 DIA. Pins

Contacts:

- Spring Temper Grade "A" Phosphor Bronze, or Heat Treated Beryllium Copper
- Gold Plated over Copper or Nickel Plate

Mounting Hardware:

- Special Studs, Screws, Lockwashers, and Nuts

Insulation Material:

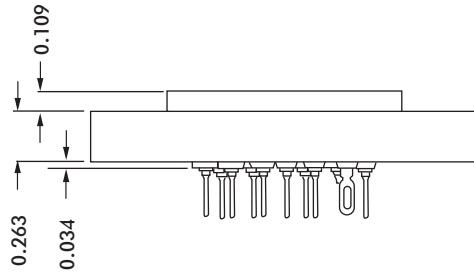
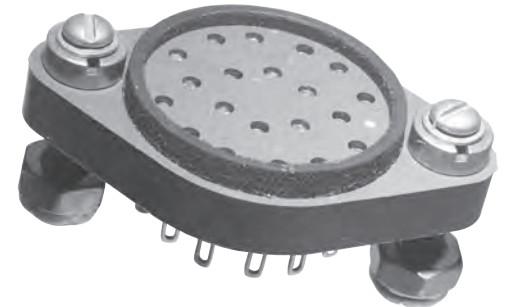
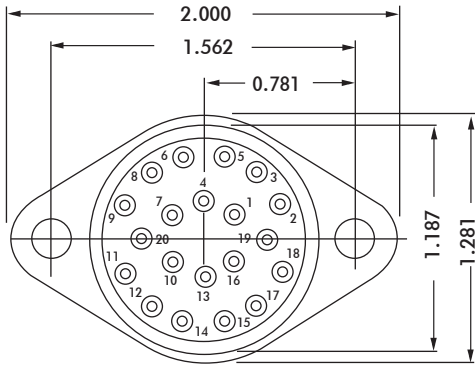
- Choice of "MIL Approved" Thermosetting Insulations (See Page 45)

Temperature Ratings: -65°C to +125°C

Weight of Socket with Mountings: 0.96 oz.



HRSS SERIES



ELECTRICAL

Wire Size:

- Solder Cup Type One #20 AWG
- Turret Type Two #20 AWG or
Three #22 AWG
- Eyelet Type Two #20 AWG or
Three #22 AWG
- Taper Type One AMP "37" Taper
Receptacle

Current Rating 7.5 Amperes
Withstanding Voltage:

- Contact to Contact Sea Level 2700 VRMS Minimum
- Contact to Ground Sea Level 2700 VRMS Minimum
- Contact to Contact 70,000 Ft. 560 VRMS Minimum
- Contact to Ground 70,000 Ft. 560 VRMS Minimum

MECHANICAL

- Creepage Between Contacts 0.16 Minimum
- Air Space Between Contacts 0.09 Minimum
- Contacts to Accept 0.040 ± 0.001 DIA. Pins

Contacts:

- Spring Temper Grade "A" Phosphor Bronze, or
Heat Treated Beryllium Copper
- Gold Plated over Copper or Nickel Plate

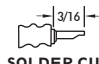
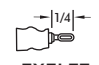
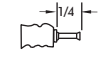
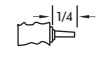
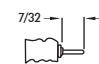
Mounting Hardware:

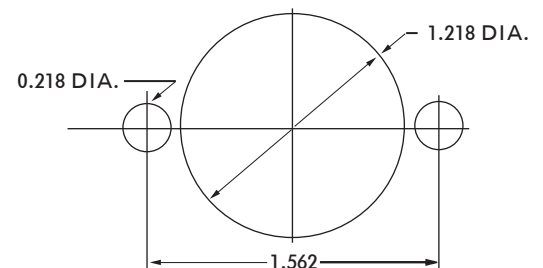
- Special Studs, Screws, Lockwashers, and Nuts

Insulation Material:

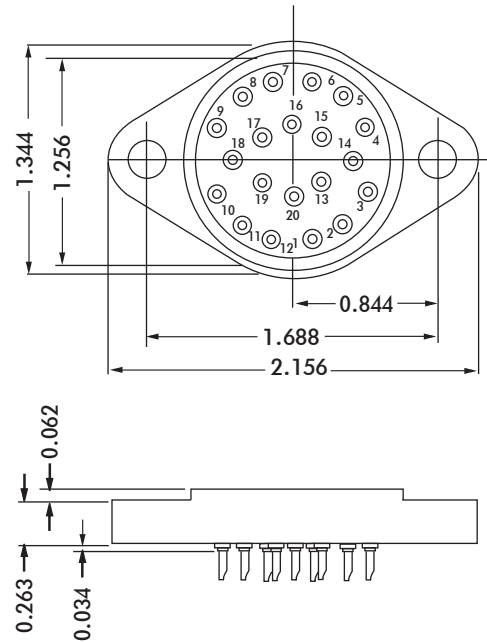
- Choice of "MIL Approved" Thermosetting
Insulations (See Page 45)

Temperature Ratings: -65°C to +125°C
Weight of Socket with Mountings: 0.96 oz.

CONTACT DATA	CHASSIS MOUNTING DATA				
	CHASSIS THICKNESS	X-DIMENSION	BELOW CHASSIS	BELOW CHASSIS	ABOVE CHASSIS
 SOLDER CUP	1/16	.12		HRSS - 1	HRSS - 2
	3/32	.09		HRSS - 31	HRSS - 32
	1/8	.06	HRSS - 41		HRSS - 42
 EYELET	1/16	.12		HRSS - 5	HRSS - 6
	3/32	.09		HRSS - 35	HRSS - 36
	1/8	.06	HRSS - 45		HRSS - 46
 TURRET	1/16	.12		HRSS - 3	HRSS - 4
	3/32	.09		HRSS - 33	HRSS - 34
	1/8	.06	HRSS - 43		HRSS - 44
 TAPER PIN	1/16				
	3/32				
	1/8				
 STRAIGHT	1/16				HRSS - 210
	3/32				
	1/8				HRSS - 2910



RECOMMENDED CHASSIS CUT-OUT



CONTACT DATA	CHASSIS MOUNTING DATA			BELOW CHASSIS	BELOW CHASSIS	ABOVE CHASSIS
	CHASSIS THICKNESS	X-DIMENSION				
 SOLDER CUP	$\frac{1}{16}$.12			HRL - 1	HRL - 2
	$\frac{3}{32}$.09			HRL - 31	HRL - 32
	$\frac{1}{8}$.06	HRL - 41			HRL - 42
 EYELET	$\frac{1}{16}$.12			HRL - 5	HRL - 6
	$\frac{3}{32}$.09			HRL - 35	HRL - 36
	$\frac{1}{8}$.06	HRL - 45			HRL - 46
 TURRET	$\frac{1}{16}$.12			HRL - 3	HRL - 4
	$\frac{3}{32}$.09			HRL - 33	HRL - 34
	$\frac{1}{8}$.06	HRL - 43			HRL - 44
 TAPER PIN	$\frac{1}{16}$				HRL - 7	HRL - 8
	$\frac{3}{32}$				HRL - 37	HRL - 38
	$\frac{1}{8}$		HRL - 47			HRL - 48
 STRAIGHT	$\frac{1}{16}$					HRL - 54
	$\frac{7}{32}$					

ELECTRICAL

Wire Size:

- Solder Cup Type One #20 AWG
- Turret Type Two #20 AWG or
Three #22 AWG
- Eyelet Type Two #20 AWG or
Three #22 AWG
- Taper Type One AMP "37" Taper
Receptacle

Current Rating 7.5 Amperes

Withstanding Voltage:

- Contact to Contact Sea Level 2700 VRMS Minimum
- Contact to Ground Sea Level 3300 VRMS Minimum
- Contact to Contact 70,000 Ft. 560 VRMS Minimum
- Contact to Ground 70,000 Ft. 675 VRMS Minimum

MECHANICAL

- Creepage Between Contacts 0.16 Minimum
- Air Space Between Contacts 0.09 Minimum
- Contacts to Accept 0.040 ± 0.001 DIA. Pins

Contacts:

- Spring Temper Grade "A" Phosphor Bronze, or
Heat Treated Beryllium Copper
- Gold Plated over Copper or Nickel Plate

Mounting Hardware:

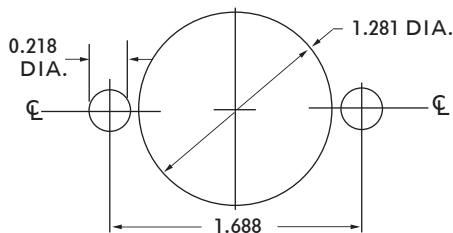
- Special Studs, Screws, Lockwashers, and Nuts

Insulation Material:

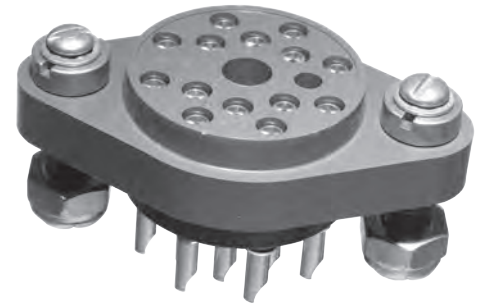
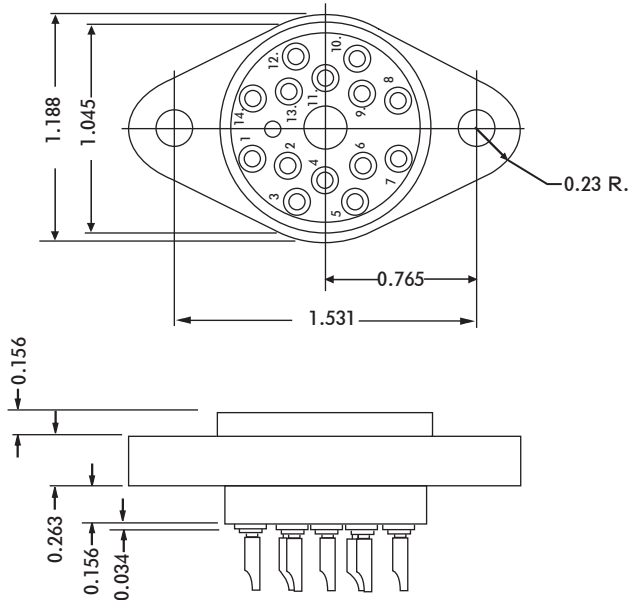
- Choice of "MIL Approved" Thermosetting
Insulations (See Page 45)

Temperature Ratings: -65°C to +125°C

Weight of Socket with Mountings: 0.96 oz.



RECOMMENDED CHASSIS CUT-OUT



ELECTRICAL

Wire Size:

- Solder Cup Type One #16 AWG or Two #20 AWG
- Turret Type Two #20 AWG or Three #20 AWG

Current Rating 13 Amperes

Withstanding Voltage:

- Contact to Contact Sea Level 1500 VRMS Minimum
- Contact to Ground Sea Level 2700 VRMS Minimum
- Contact to Contact 70,000 Ft. 375 VRMS Minimum
- Contact to Ground 70,000 Ft. 560 VRMS Minimum

MECHANICAL

- Creepage Between Contacts 0.11 Minimum
- Air Space Between Contacts 0.05 Minimum
- Contacts to Accept 0.062 ± 0.001 DIA. Pins

Contacts:

- Spring Temper Grade "A" Phosphor Bronze, or Heat Treated Beryllium Copper
- Gold Plated over Copper or Nickel Plate

Mounting Hardware:

- Special Studs, Screws, Lockwashers, and Nuts

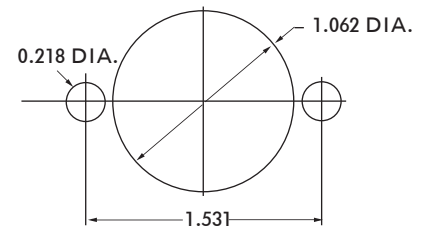
Insulation Material:

- Choice of "MIL Approved" Thermosetting Insulations (See Page 45)

Temperature Ratings: -65°C to +125°C

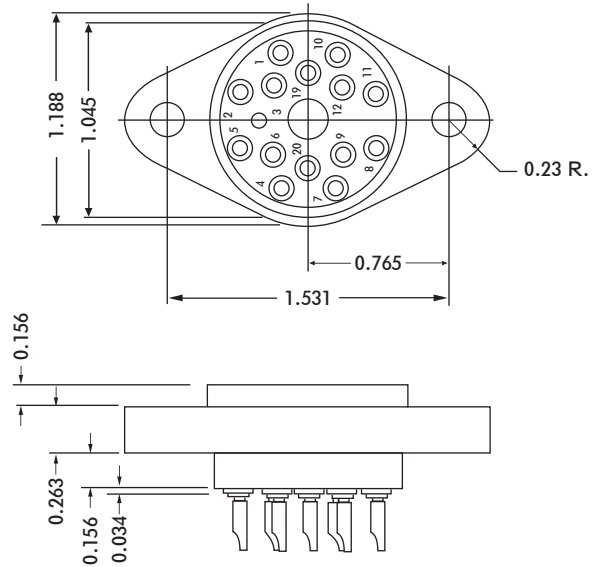
Weight of Socket with Mountings: 1.39 oz.

CONTACT DATA	CHASSIS MOUNTING DATA				
	CHASSIS THICKNESS	X-DIMENSION	MOUNTING TYPE		
			BELOW CHASSIS	BELOW CHASSIS	ABOVE CHASSIS
 SOLDER CUP	1/16	.12		HRH - 1	HRH - 2
	3/32	.09		HRH - 31	HRH - 32
	1/8	.06		HRH - 41	HRH - 42
 TURRET	1/16	.12		HRH - 3	HRH - 4
	3/32	.09		HRH - 33	HRH - 34
	1/8	.06		HRH - 43	HRH - 44
 WIRE WRAP	1/16	.12		HRH - 9	
	3/32				
	1/8				



RECOMMENDED CHASSIS CUT-OUT

HRHA SERIES



CONTACT DATA	CHASSIS MOUNTING DATA				
	CHASSIS THICKNESS	X-DIMENSION	CONTACT MOUNTING		
			BELOW CHASSIS	BELOW CHASSIS	ABOVE CHASSIS
 5/16 SOLDER CUP	1/16	.09		HRHA - 1	HRHA - 2
	3/32	.06	HRHA - 31		HRHA - 32
 11/32 TURRET	1/8				HRHA - 42
	1/16	.09			
	3/32	.06			
	1/8				

ELECTRICAL

Wire Size:

Solder Cup Type One #16 AWG
 Turret Type Two #16 AWG or
 Three #20 AWG
 Current Rating 13 Amperes

Withstanding Voltage:

Contact to Contact Sea Level 1500 VRMS Minimum
 Contact to Ground Sea Level 2700 VRMS Minimum
 Contact to Contact 70,000 Ft. 375 VRMS Minimum
 Contact to Ground 70,000 Ft. 560 VRMS Minimum

MECHANICAL

Creepage Between Contacts 0.11 Minimum
 Air Space Between Contacts 0.05 Minimum
 Contacts to Accept 0.062 ± 0.001 DIA. Pins

Contacts:

Spring Temper Grade "A" Phosphor Bronze, or
 Heat Treated Beryllium Copper
 Gold Plated over Copper or Nickel Plate

Mounting Hardware:

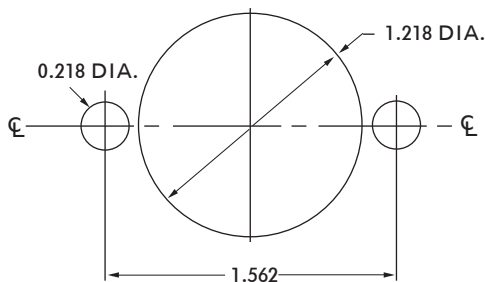
Special Studs, Screws, Lockwashers, and Nuts

Insulation Material:

Choice of "MIL Approved" Thermosetting
 Insulations (See Page 45)

Temperature Ratings: -65°C to +125°C

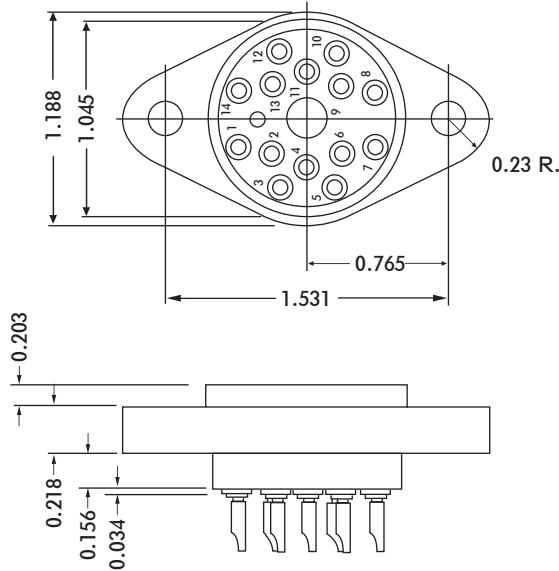
Weight of Socket with Mountings: 1.39 oz.



RECOMMENDED CHASSIS CUT-OUT



HRHF SERIES



ELECTRICAL

Wire Size:

Solder Cup Type One #16 AWG or
 Two #20 AWG
 Turret Type Two #16 AWG or
 Three #20 AWG

Current Rating 13 Amperes

Withstanding Voltage:

Contact to Contact Sea Level 1500 VRMS Minimum
 Contact to Ground Sea Level 2700 VRMS Minimum
 Contact to Contact 70,000 Ft. 375 VRMS Minimum
 Contact to Ground 70,000 Ft. 560 VRMS Minimum

MECHANICAL

Creepage Between Contacts 0.11 Minimum
 Air Space Between Contacts 0.05 Minimum
 Contacts to Accept 0.062 ± 0.001 DIA. Pins

Contacts:

Spring Temper Grade "A" Phosphor Bronze, or
 Heat Treated Beryllium Copper
 Gold Plated over Copper or Nickel Plate

Mounting Hardware:

Special Studs, Screws, Lockwashers, and Nuts

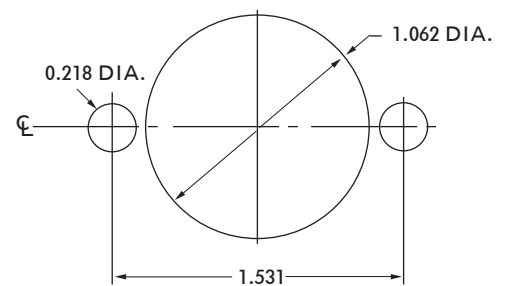
Insulation Material:

Choice of "MIL Approved" Thermosetting
 Insulations (See Page 45)

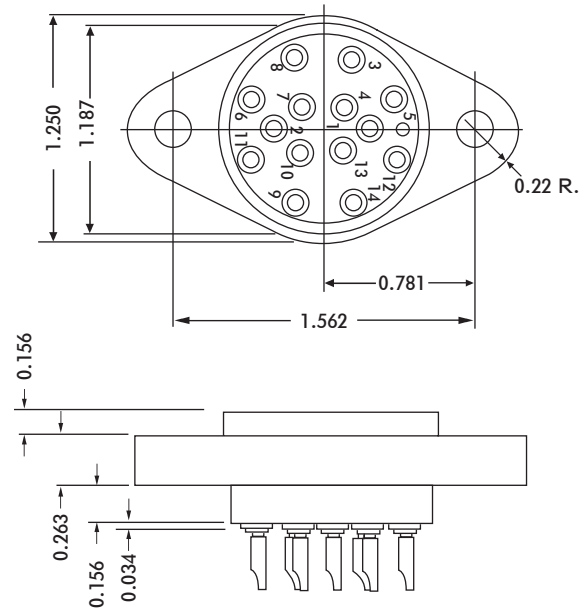
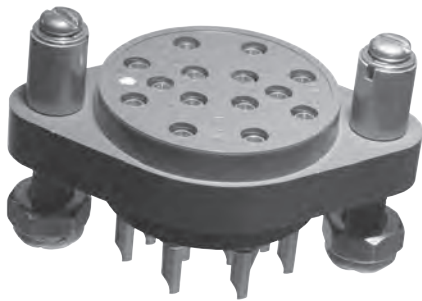
Temperature Ratings: -65°C to +125°C

Weight of Socket with Mountings: 1.39 oz.

CONTACT DATA	CHASSIS MOUNTING DATA				
	CHASSIS THICKNESS	X-DIMENSION	MOUNTING STYLE		
			BELOW CHASSIS	BELOW CHASSIS	ABOVE CHASSIS
	1/16	.12		HRHF - 21	HRHF - 22
	3/32	.09	HRHF - 31		HRHF - 32
SOLDER CUP	1/8	.06	HRHF - 41		HRHF - 42
	1/16	.12		HRHF - 23	HRHF - 24
	3/32	.09	HRHF - 33		HRHF - 34
	1/8	.06	HRHF - 43		HRHF - 44



RECOMMENDED CHASSIS CUT-OUT



CONTACT DATA	CHASSIS MOUNTING DATA				
	CHASSIS THICKNESS	X-DIMENSION	X		
			BELOW CHASSIS	BELOW CHASSIS	ABOVE CHASSIS
 SOLDER CUP	1/16	.44		HRP - 1	HRP - 2
	3/32	.41		HRP - 31	HRP - 32
	1/8	.38		HRP - 41	HRP - 42
 TURRET	1/16	.44		HRP - 3	HRP - 4
	3/32	.41		HRP - 33	HRP - 34
	1/8	.38		HRP - 43	HRP - 44
 WIRE WRAP	1/16	.44		HRP - 19	
	3/32	.41		HRP - 39	
	1/8	.38		HRP - 49	

ELECTRICAL

Wire Size:

Solder Cup Type One #16 AWG or
Two #20 AWG

Turret Type Two #16 AWG or
Three #20 AWG

Current Rating 13 Amperes

Withstanding Voltage:

Contact to Contact Sea Level 1800 VRMS Minimum

Contact to Ground Sea Level 2700 VRMS Minimum

Contact to Contact 70,000 Ft. 450 VRMS Minimum

Contact to Ground 70,000 Ft. 560 VRMS Minimum

MECHANICAL

Creepage Between Contacts 0.12 Minimum

Air Space Between Contacts 0.06 Minimum

Contacts to Accept 0.062 ± 0.001 DIA. Pins

Contacts:

Spring Temper Grade "A" Phosphor Bronze, or

Heat Treated Beryllium Copper

Gold Plated over Copper or Nickel Plate

Mounting Hardware:

Special Studs, Screws, Lockwashers, and Nuts

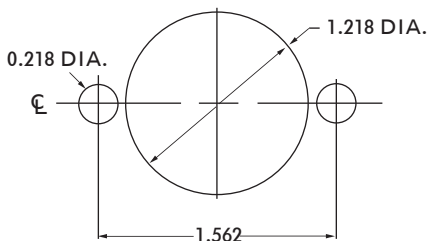
Insulation Material:

Choice of "MIL Approved" Thermosetting

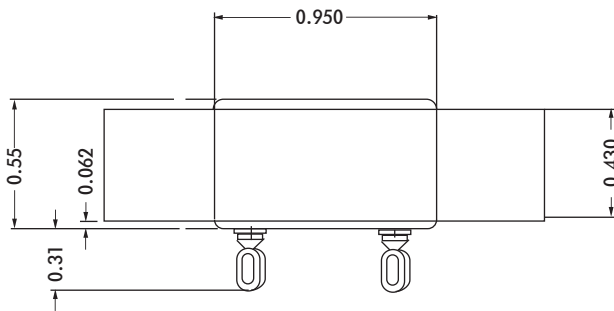
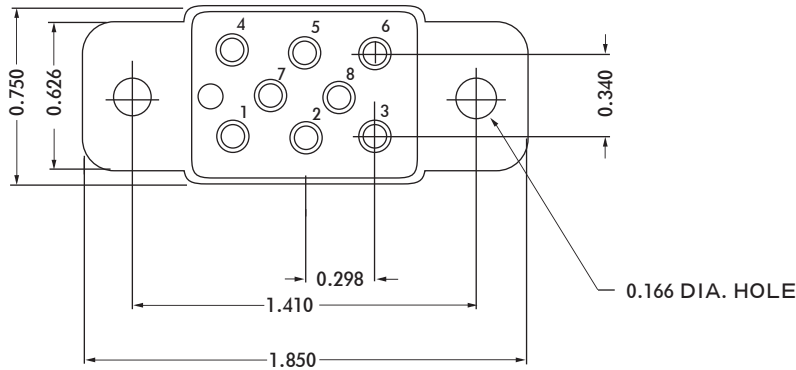
Insulations (See Page 45)

Temperature Ratings: -65°C to +125°C

Weight of Socket with Mountings: 1.54 oz.



RECOMMENDED CHASSIS CUT-OUT



HRY-285

ELECTRICAL

Wire Size:

Solder Cup Type N.A.
 Eyelet Type One #16 AWG or
 Two #20 AWG

Current Rating 10 Amperes

MECHANICAL

Creepage Between Contacts 0.07 Minimum
 Air Space Between Contacts 0.07 Minimum
 Contacts to Accept 0.060 ± 0.005 DIA. Pins

Contacts:

Heat Treated Beryllium Copper
 Gold Plated over Copper or Nickel Plate

Mounting Hardware:

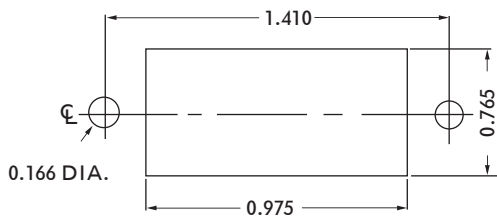
Special Studs, Screws, Lockwashers, and Nuts

Insulation Material:

Choice of "MIL Approved" Thermosetting
 Insulations (See Page 45)

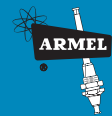
Temperature Ratings: -65°C to +125°C

Weight of Socket with Mountings: 0.85 oz.



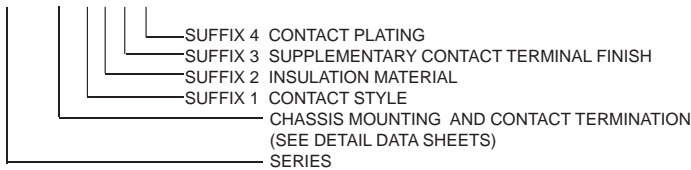
RECOMMENDED CHASSIS CUT-OUT

ORDERING INSTRUCTIONS



PART NUMBER

HRCC - 41 K J F V2



MATERIAL CERTIFICATIONS

SUFFIX 1

NONE OPEN-ENTRY CONTACTS
K CLOSED-ENTRY CONTACTS

SUFFIX 2

J DIALLYL PHTHALATE, GLASS-FIBER FILLED PER MIL-M-14, TYPE GDI 30F
L DIALLYL PHTHALATE, GLASS-FIBER FILLED PER MIL-M-14, TYPE SDG-F
L2 DIALLYL PHTHALATE, GLASS-FIBER FILLED PER MIL-M-14, TYPE SDG-F COLOR BLACK
H DIALLYL PHTHALATE, ORLON-FILLED PER MIL-M-14, TYPE SDI-5

SUFFIX 3

NONE NO SUPPLEMENTARY CONTACT TERMINAL FINISH
F SOLDER (60-40) WITH WATER SOLUBLE ROSIN FLUX
(SOLDER CUP-PREFILLED)
(EYELET, STRAIGHT PIN, AND TURRET-DIPPED)

SUFFIX 4

V2 GOLD PLATE (0.00005) PER MIL-G-45204, TYPE II, CLASS 1 OVER COPPER PLATE
T3 GOLD PLATE (0.00005) PER MIL-G-45204, TYPE II, CLASS 1 OVER NICKEL PLATE
(0.0001) PER QQ-N-290, TYPE VII, CLASS 1 (LOW STRESS NICKEL) OVER COPPER
PLATE PER MIL-C-14550, CLASS 4
T6 GOLD PLATE PER MIL-G-45204, TYPE II, CLASS 1, GRADE C OVER GOLD PLATE PER
MIL-G-45204, TYPE I, CLASS 00, GRADE A OVER NICKEL PLATE PER QQ-N-290
30-50 MICROINCHES (LOW STRESS NICKEL) OVER COPPER PLATE PER MIL-C-14550
CLASS 4
OTHER PLATINGS AVAILABLE UPON REQUEST

GENERAL

1. MEET OR EXCEED APPLICABLE REQUIREMENTS OF MIL-S-12883
2. UTILIZE PRECISION MACHINED CONTACTS OF SPRING TEMPER PHOSPHOR BRONZE AND/OR HEAT-TREATED BERYLLIUM COPPER. **AN ARMEL FIRST IS THE USE OF CONTACTS WITH EYELET-TYPE WIRE CONNECTION.**
3. ALL CONTACTS FREE FLOATING AND SECURELY CONTAINED.
4. CLOSED-ENTRY CONTACTS MEET PROBE DAMAGE TEST OF MIL-C-5015
5. CONTACTS GOLD PLATED FOR LOW CONTACT RESISTANCE
6. ADAPTABLE FOR AUTOMATION
7. REDUCES POSSIBILITY OF MOISTURE CONTAMINATION

MATERIAL AND FINISH SPECIFICATIONS

STAINLESS STEEL	QQ-S-763/766 TYPE 303 (NON-MAGNETIC)
COLD ROLL STEEL	QQ-S-640, COMPOSITION CR
BRASS	QQ-B-626
PHOSPHOR BRONZE	QQ-B-750
BERYLLIUM COPPER	QQ-C-533
CADMIUM PLATE	QQ-P-416, TYPE II, CLASS 2
NICKEL PLATE	QQ-N-290, TYPE VII, CLASS 2
PASSIVATE	QQ-P-35 / AMS 2700
HOT TIN DIP	MIL-T-10727, TYPE II

ARMEL ELECTRONICS, INC.

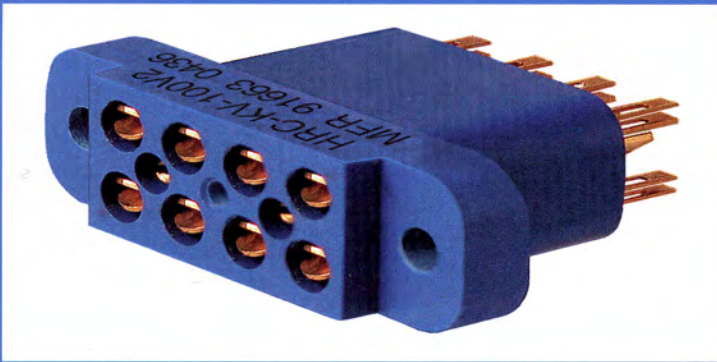
1601 75TH STREET NORTH BERGEN, NJ 07047

FAX 201-869-4304

WEBSITE WWW.ARMELELECTRONICS.COM

E-MAIL INFO@ARMELELECTRONICS.COM

KELVIN SERIES



ARMEL KELVIN SOCKETS

In Molded DAP bodies are NOW AVAILABLE from ARMEL.

Please call 800-840-0666 or e-mail info@armel.us for detailed information regarding these and a complete line of Mil-Spec and Mil-COTS connectors, sockets, terminals and custom hardware.

TECHNICAL DATA:

CURRENT RATING: 15 AMP

CONTACT MATERIALS:

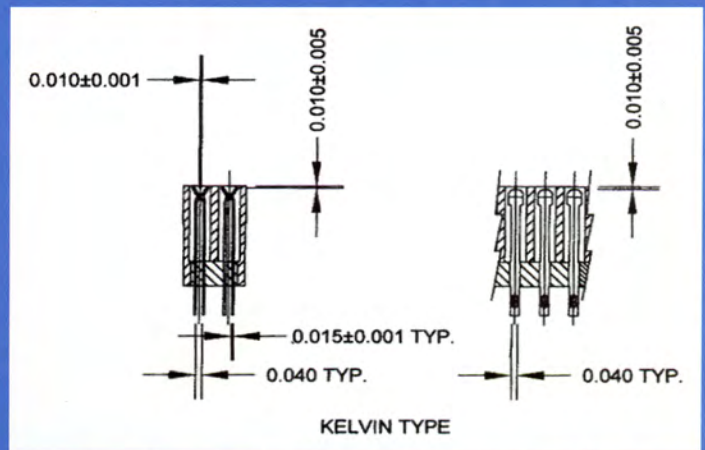
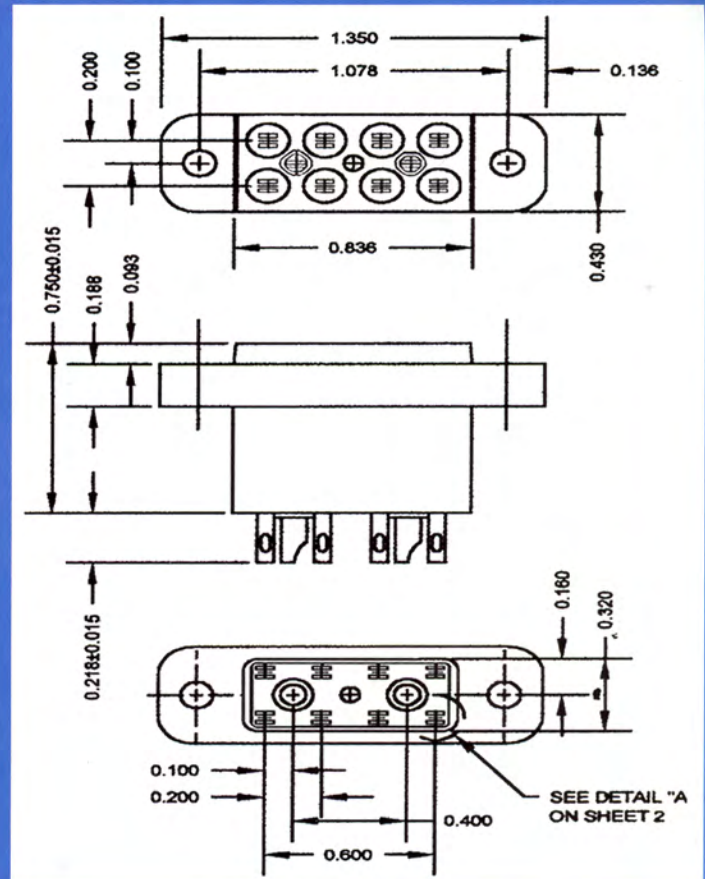
PHOSPHOR BRONZE PER QQ-B-750, OR
BERYLIUM COPPER PER QQ-C-530

INSULATION MATERIAL:

DIALYL ORTHO PHTHALATE PER MIL-M-14

CUSTOM DESIGNED SOCKETS ARE ALSO AVAILABLE

WE CAN DESIGN TO MEET YOUR EXACT NEEDS SO THAT THE SOCKETS WILL MEET YOUR TEST REQUIREMENTS. CONTACT ARMEL'S SALES DEPARTMENT AT 1-800-840-0666 FOR FULL DETAILS.



ARMEL ELECTRONICS, INC.

1601 75TH STREET

NORTH BERGEN, NEW JERSEY 07047

PHONE: 800-840-0666 • FAX: 201-869-4304 • E-MAIL: INFO@ARMEL.US

