



A COMPANY OF STPI GROUP

SE205, SE405 & SE310

Track Mount

Military Specified

Meets MIL-DTL-12883

General Characteristics

Grommet Material:

Silicone Rubber

Socket Contact Material:

Gold Plated Copper Alloy

Socket Contact Type:

Closed Entry, Crimp Type,
Rear Entry and Release

Mounting Track:

M12883/53-001

Environmental Characteristics

Temperature Range:

-70°C to +125°C

Electrical Characteristics

Dielectric Strength

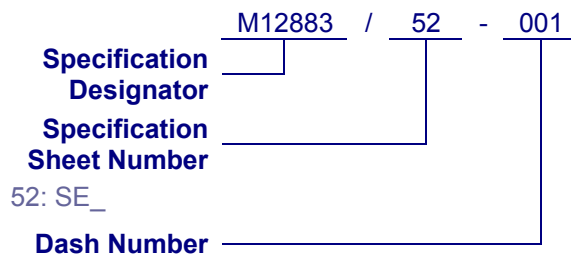
At Sea Level:

1,500 Vrms Max.

At 80,000 feet:

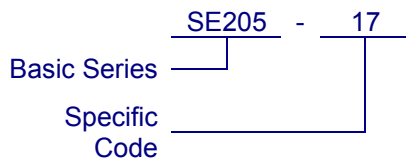
700 Vrms

Military Part Numbering



See Charts

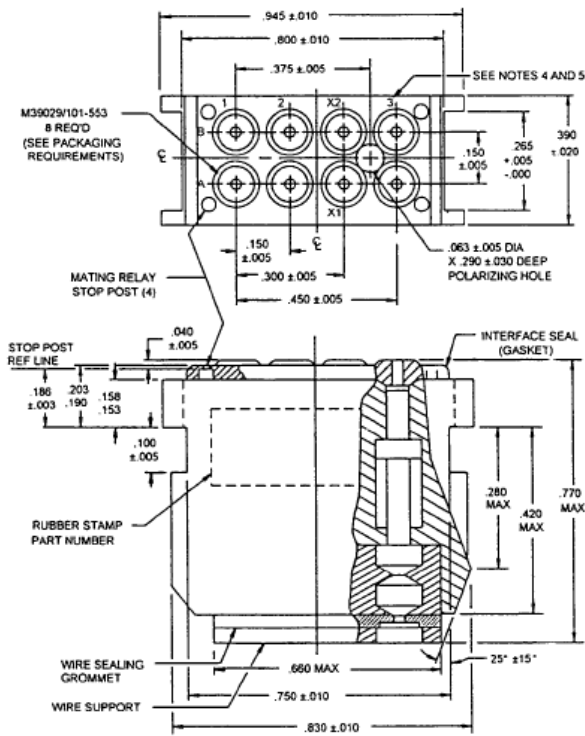
QPL Part Numbering



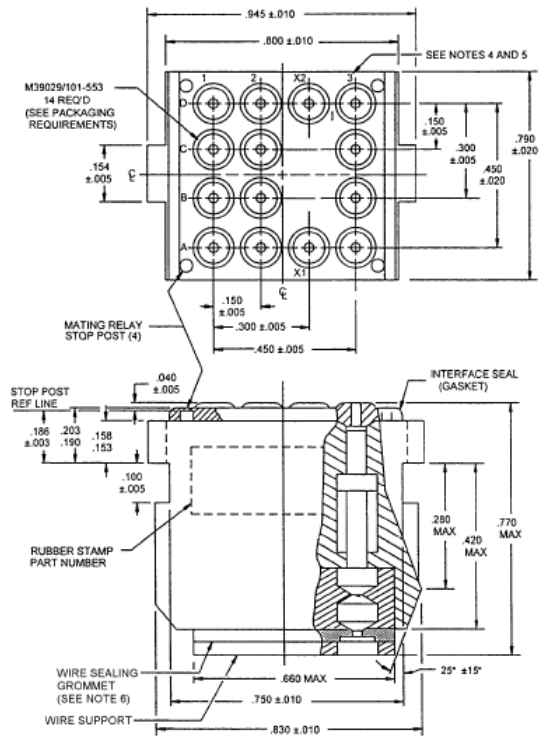
Dash Numbers – Specification Sheet Number 52

Dash Number	Basic Series	Specific Code	Body Type	Weight (Ounces)	Mating Relay
001	SE205	17	A	0.247	M83536/2-028 M83726/24, 25
002	SE405	23	B	0.494	M83536/6-025
003	SE310	2	C	0.494	M83536/22-025

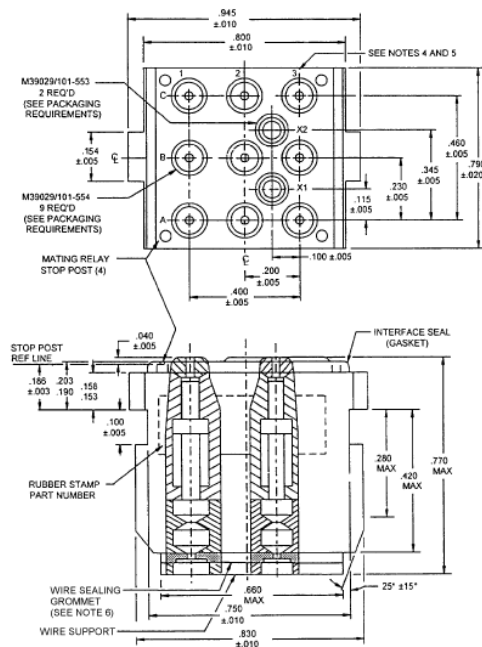
Body Layout



Body Style A



Body Style B



Body Style C