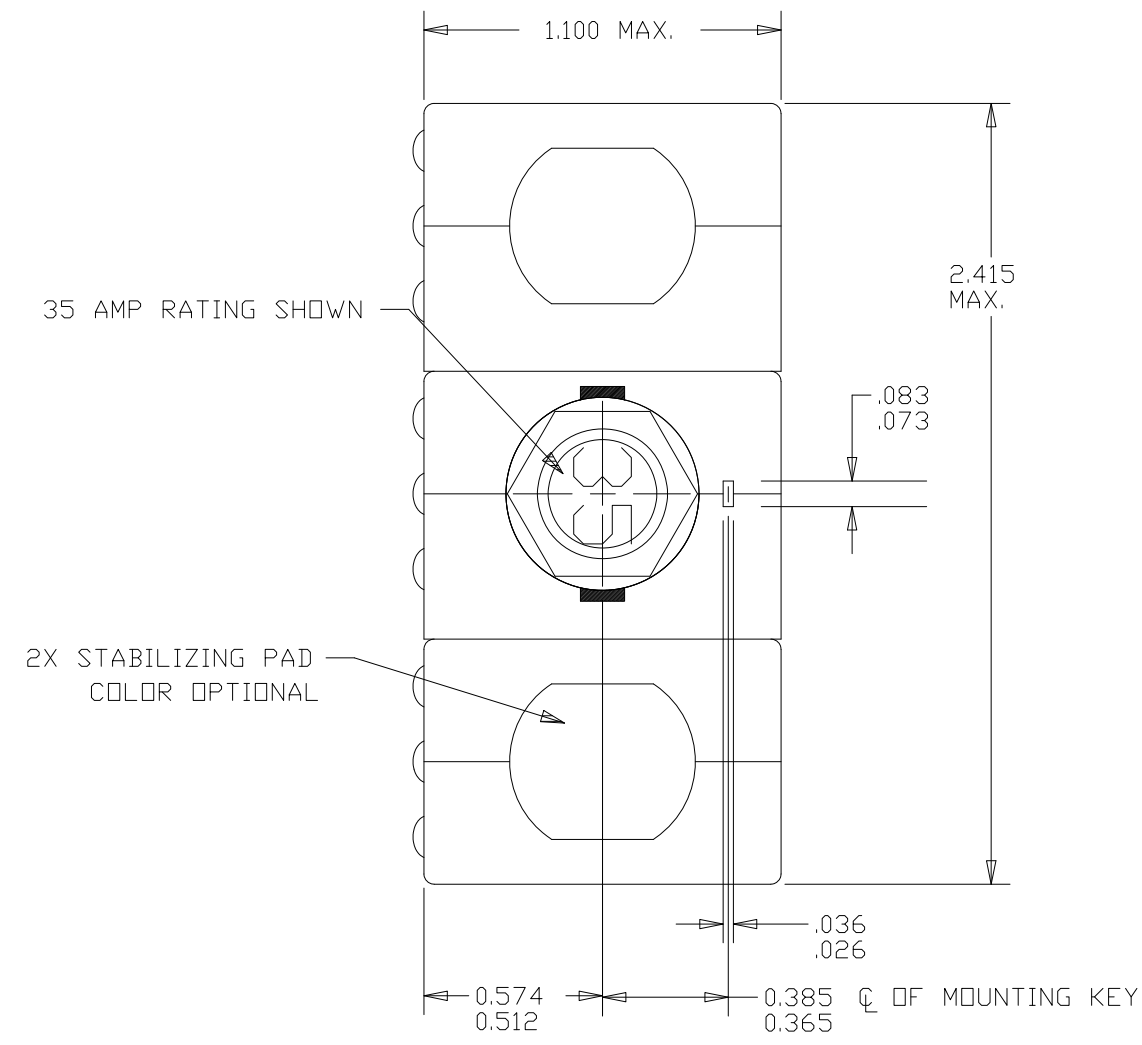


Property of
Sensata Technologies

ZONE	REV.	REVISION DESCRIPTION	ECN NO.	DATE
	Y	ADDED NOTE 6; DETAIL PERFORMANCE WAS PER MIL-C-5809; ADDED +85°C, +185°F LINE TO SINGLE OR THREE PHASE CALIBRATION; RW	ECO-077800	28-JUN-2012



PERFORMANCE CHARACTERISTICS

DETAIL PERFORMANCE PER AS58091

OVERLOAD CYCLING	-----	100 CYCLES AT 200% RATING
VIBRATION	-----	10 G'S MINIMUM 50-500 CPS
MECHANICAL SHOCK	-----	50 G'S
ACCELERATION	-----	10 G'S
SAND AND DUST	-----	12 HOURS
CORROSION	-----	SALT SPRAY 48 HOURS
HUMIDITY	-----	10 DAYS
EXPLOSION PROOF	-----	WHILE INTERRUPTING RUPTURE CURRENTS

ENDURANCE:

120 VAC	400 HZ INDUCTIVE	2500 CYCLES
MECHANICAL	400 HZ RESISTIVE NO LOAD	5000 CYCLES 5000 CYCLES

SINGLE * OR THREE PHASE CALIBRATION: 1 AMP, 15 AMP THRU 35 AMP

	MIN. ULT. TRIP	MAX. ULT. TRIP	200%	500%	1000%
+25°C, +77°F	110% RATING	145% RATING	4-20 SEC.	.40-2.0 SEC.	.10-.53 SEC.
-55°C, -65°F	110% RATING	165% RATING	6-40 SEC.	.55-3.5 SEC.	.15-.80 SEC.
+71°C, +160°F	100% RATING	145% RATING	3-20 SEC.	.33-1.7 SEC.	.08-.40 SEC.
+85°C, +185°F	100% RATING	145% RATING	3-20 SEC.	---	---

(SEE NOTE 6)

RUPTURE:

1 AMP, 15 AMP THRU 35 AMP	120 VAC, 400 HZ	2000 AMPS
---------------------------	-----------------	-----------

MAXIMUM OPERATING FORCES

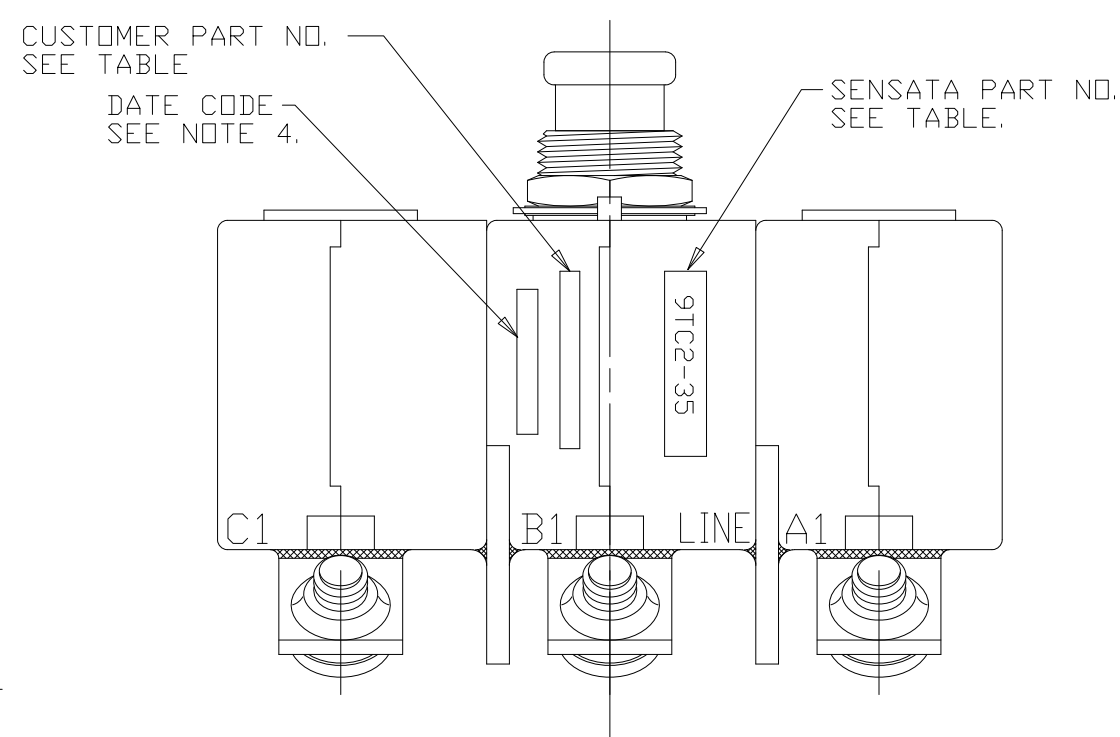
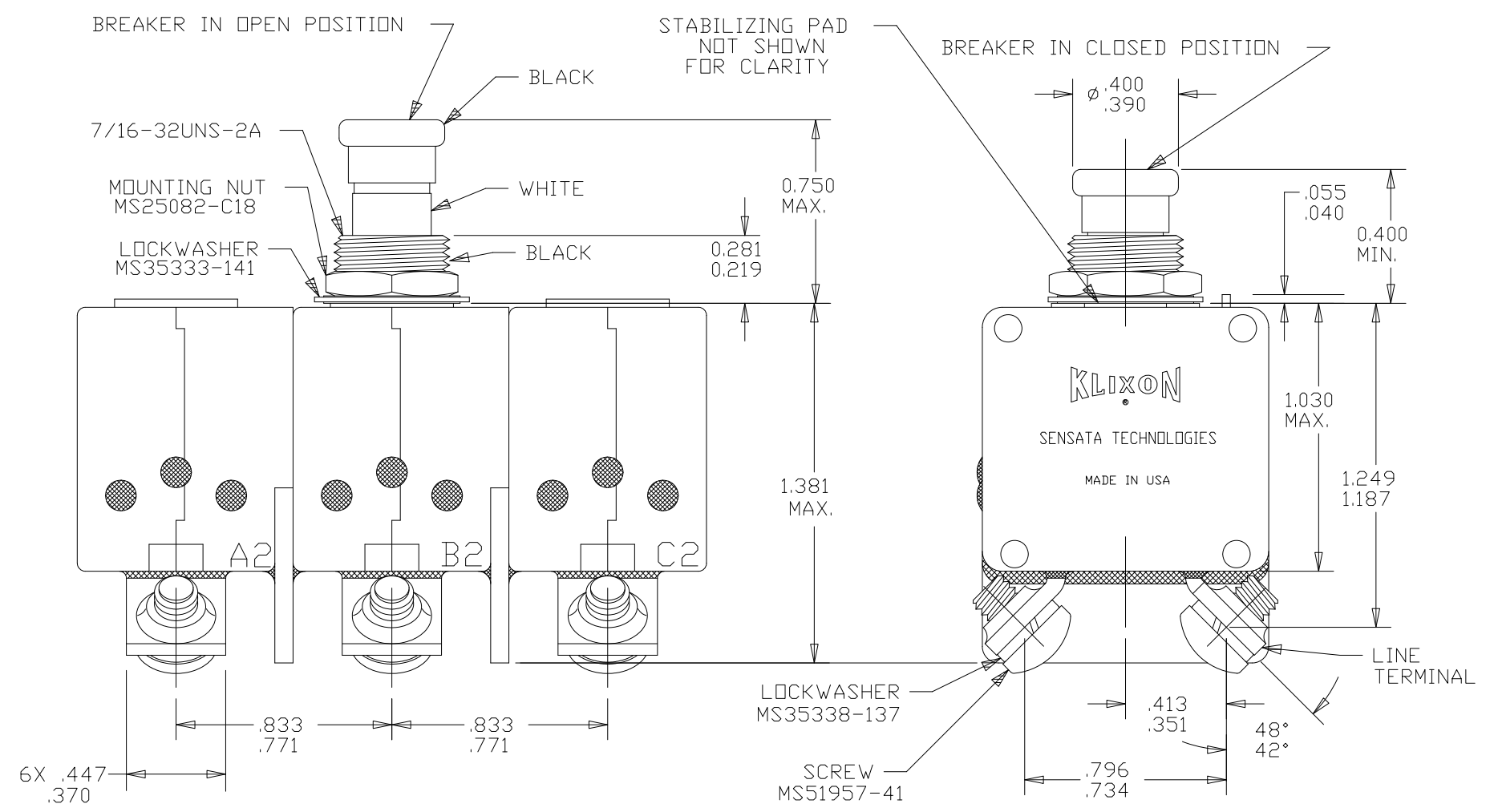
PULL OUT	-----	12 LBS. MAX. (<53.4 N)
RESET	-----	12 LBS. MAX. (<53.4 N)

OPERATING ALTITUDE: 70,000 FT. (<21,000 M)
WEIGHT: 110.0 GRAMS MAX. (<0.242 LBS. >)

VOLTAGE DROP:

1 AMP	-----	1.10 VOLTS MAX.
15 AMP	-----	0.25 VOLTS MAX.
20 AMP	-----	0.25 VOLTS MAX.
25 AMP	-----	0.25 VOLTS MAX.
30 AMP	-----	0.25 VOLTS MAX.
35 AMP	-----	0.25 VOLTS MAX.

* SINGLE PHASE MAXIMUM ULTIMATE TRIP VALUES APPLY WITH OTHER TWO PHASES CARRYING 100% OF RATED CURRENT.



9TC2-35	MS 14153-35
9TC2-30	MS 14153-30
9TC2-25	MS 14153-25
9TC2-20	MS 14153-20
9TC2-15	MS 14153-15
9TC2-1	MS 14153-1
SENSATA PART NO. CUSTOMER PART NO.	

- NOTES:
- EPOXY SURFACES ARE NON-DIMENSIONED. ENVELOPE DRAWING DIMENSIONS DO NOT APPLY TO THESE PROJECTED EPOXY SURFACES.
 - TERMINAL AND MOUNTING HARDWARE MAY BE PACKAGED RATHER THAN INSTALLED.
 - COUNTRY OF ORIGIN IS SHOWN FOR ILLUSTRATION PURPOSES ONLY. COUNTRY OF ORIGIN TO BE IDENTIFIED AS REQUIRED.
 - DATE CODE PER 10588-285.
 - ALL MARKINGS TO BE MADE IN APPROXIMATE POSITIONS SHOWN, WITH BLACK INK PER 12506-70; 3/32 INCH HIGH CHARACTERS.
 - CALIBRATION PERFORMANCE AT +85°C APPLIES TO THE 9TC2-35 ONLY. CALIBRATION PERFORMANCE AT THIS TEMPERATURE IS NOT SPECIFIED PER AS14153.

FOR REFERENCE ONLY, CHECK LATEST REVISION BEFORE USE. PARTS MADE TO THIS PRINT MUST CONFORM TO E9898 REV. E

DRAWN TDM DAIL DATE 06-MAR-1990 ENGINEER E. QUINTEROS DATE 28-JUN-2012 APPROVED W. BENTLEY DATE 28-JUN-2012 APPROVED P. FERREIRA DATE 28-JUN-2012	SENSATA TECHNOLOGIES PROPRIETARY AND CONFIDENTIAL. NEITHER THIS PRINT NOR THE INFORMATION CONTAINED HEREON IS TO BE USED AGAINST THE INTERESTS OF SENSATA TECHNOLOGIES OR AGAINST THE INTERESTS OF ANY OF ITS AFFILIATED COMPANIES OR WHOLLY OWNED SUBSIDIARIES. INTERPRET DIMENSIONING AND TOLERANCING PER ASME Y14.5-2009. UNLESS OTHERWISE SPECIFIED DIMENSIONS ARE IN INCHES. TOLERANCES DECIMALS ANGLES	529 PLEASANT STREET P.O. BOX 2964 ATTLEBORO, MA 02703 Sensata Technologies TITLE AMBIENT COMPENSATED, HIGH TEMP CIRCUIT BREAKER PUSH-PULL, TRIP FREE ENVELOPE DRAWING SIZE DWG NO. REV. C 9TC2 Y SCALE 2:1 AUTOCAD SHEET 1 OF 1
--	--	--

DEVICES: PROJECT: 1