

Quick Mount Relay Sockets

JRS 4 Pole / 10 Amp / Size 16

Operating Range

Temperature:

-65°C to 125°C

Insulation Resistance:

1000 Megaohms Min.

Dielectric Withstanding Voltage:

1500 VRMS at Sea Level

500 VRMS at 80,000 ft.

Vibration:

MIL-STD-202, Method 204

Test Condition G

Shock:

MIL-STD-213, Method 213

Test Condition C

Materials

Socket Body:

Polythermide per ASTM-D5205

Grommet:

Silicone Rubber per A-A-59588

Contact Retainers:

Stainless Steel

Internal Socket Contacts:

Copper Alloy, Hard Gold Finish
per SAE-AMS-2422

Quick Mount Relay Sockets

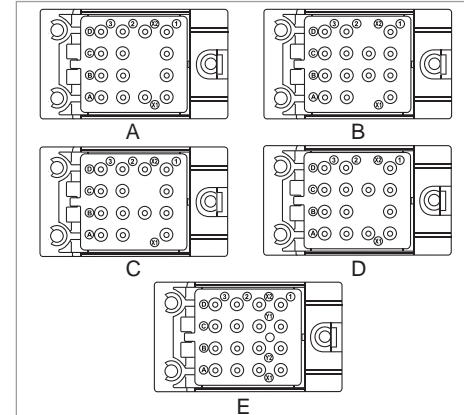


Replaces MIL-PRF-12883/40
Mates with M83536, 83726 & MS27709 Relays

Extended Height Relay Sockets

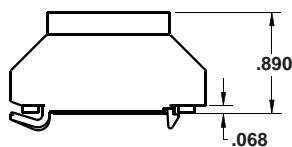
| APCD P/N | QTY | Size ¹ | Contact | Mating Relay | Configuration |
|-----------|-----|-------------------|---------|-------------------------|---------------|
| JRS400100 | 14 | 16/16 | /92-533 | M83536, M83726, MS27709 | A |
| JRS400200 | 14 | 16/16 | /92-533 | M83536, M83726, MS27709 | B |
| JRS400300 | 14 | 16/16 | /92-533 | M83536, M83726, MS27709 | C |
| JRS400400 | 14 | 16/16 | /92-533 | M83536, M83726, MS27709 | D |
| JRS400500 | 16 | 16/16 | /92-533 | M83536, M83726, MS27709 | E |

Socket Configurations

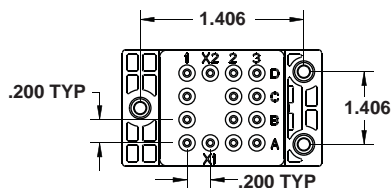


Relay Socket Dimensions

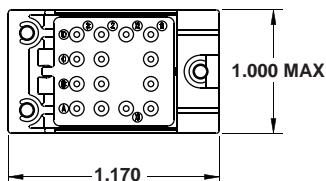
Side View



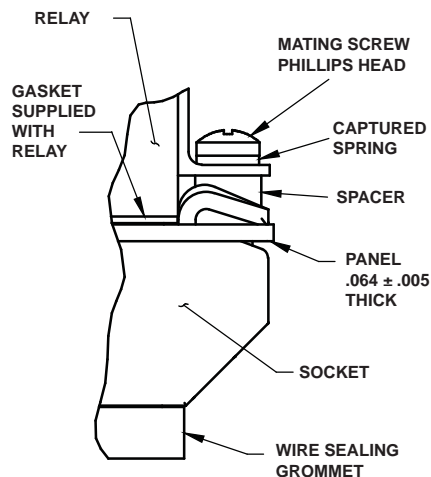
Top View



Bottom View



Mounting Hardware



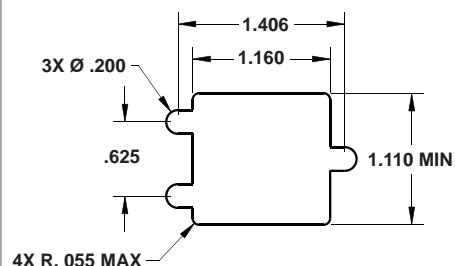
Part Number Instructions

| APCD P/N | Hardware | Contacts |
|-----------|----------|----------|
| JRS400100 | NONE | NONE |
| JRS400101 | NONE | YES |
| JRS400110 | YES | NONE |
| JRS400111 | YES | YES |

Relay Socket Weight

| Relay Socket | Pounds | Grams |
|--------------|--------|-------|
| Low Profile | .068 | 31 |

Required Mounting Panel Cutout



Amphenol Pcd