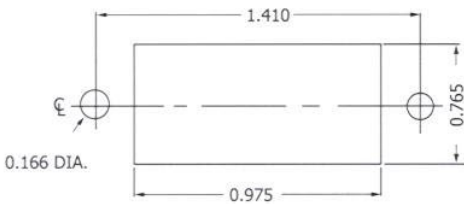


HRY-285



RECOMMENDED CHASSIS CUT-OUT

ELECTRICAL

Wire Size:
 Solder Cup Type N.A.
 Eyelet Type One #16 AWG or
 Two #20 AWG
 Current Rating 10 Amperes

MECHANICAL

Creepage Between Contacts 0.07 Minimum
 Air Space Between Contacts 0.07 Minimum
 Contacts to Accept 0.060 ± 0.005 DIA. Pins

Contacts:

Heat Treated Beryllium Copper
 Gold Plated over Copper or Nickel Plate

Mounting Hardware:

Special Studs, Screws, Lockwashers, and Nuts

Insulation Material:

Choice of "MIL Approved" Thermosetting
 Insulations (See Page 45)

Temperature Ratings: -65°C to +125°C
 Weight of Socket with Mountings: 0.85 oz.