

**Ratings**

DPDT (2 form C) contacts,  
5 amp @ 29VDC (JH-6D)  
4PDT (4 form C) contacts,  
2 amp @ 29VDC (JH-12D)

**Description**

Miniature DPDT or 4PDT relay  
High shock and vibration performance  
Temperature range: -65° to +125°C  
Low level switching contacts  
(by specification)  
Weight: DPDT—0.8 ounces maximum  
4PDT—1.4 ounces maximum  
Enclosure: Hermetically sealed  
Terminals: Plug-in, printed circuit,  
hook type, or 3" weldable leads

**Performance Data**

Operate Time: DPDT—5ms maximum,  
4PDT—10ms max.

Release Time: 5ms max.

Initial Contact Resistance:

0.05 ohms max.

Insulation Resistance:

1,000 megohms min.

Contact Rating:

Non-inductive

DPDT: 5 amp @ 29VDC  
0.3 amp @ 115VAC, 60 to  
400Hz (10)

4PDT: 2 amp @ 29VDC  
0.3 amp @ 115VAC, 60 to  
400Hz (10)

Inductive

DPDT: 1 amp @ 29VDC  
0.3 amp @ 115VAC, 60 to  
400Hz (10)

4PDT: 0.5 amp @ 29VDC  
0.3 amp @ 115VAC, 60 to  
400Hz (10)

Higher AC ratings available—  
consult factory.

Dielectric Strength

1,000V rms at sea level  
500V rms across open contacts  
350V rms at 80,000 feet

Vibration: 5-28Hz at 0.5 inch double  
amplitude, 28 to 2000Hz at a  
constant 20g.

Shock: 50g operational—100g  
mechanical

Ambient Temperature: -65° to +125°C

**Approvals**

MIL-R-5757 as applicable

**Ordering Information**

JH     
I II III

- I. Mounting and terminal variation  
II. 6D (DPDT) or 12D (4PDT)  
III. Coil voltage or mADC

Example:

JHP-6D-12VDC calls for top stud mounting  
with 3" long leads—DPDT-12VDC coil.


**Type Designation and Coil Data**

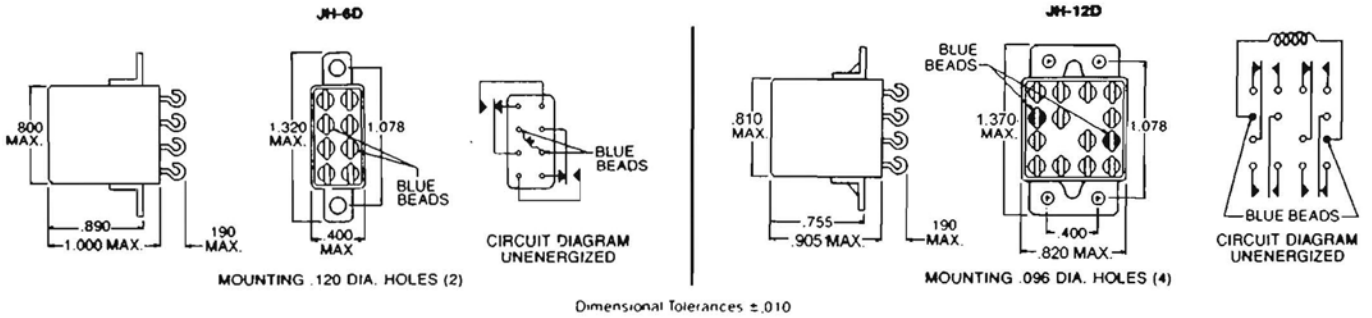
Relay Type	DC Nominal Coil Data			Maximum Pick-up Voltage	
	Volts	Amperes	Ohms*	@ +25°C	@ +125°C
JH-6D-6VDC	6	.116	52	3.3	4.5
JH-6D-12VDC	12	.095	126	6.0	8.6
JH-6D-26.5VDC	26.5	.044	600	13.0	18.0
JH-6D-48VDC	48	.024	2020	26.0	36.0
JH-6D-115VDC	115	.011	10820	58.0	81.0
JH-12D-6VDC	6	.333	18	3.0	4.1
JH-12D-12VDC	12	.167	72	6.0	8.2
JH-12D-26.5VDC	26.5	.076	350	13.0	18.0
JH-12D-48VDC	48	.038	1270	24.0	33.0
JH-12D-115VDC	115	.019	6000	57.0	78.0

**Current Adjusted Relays**

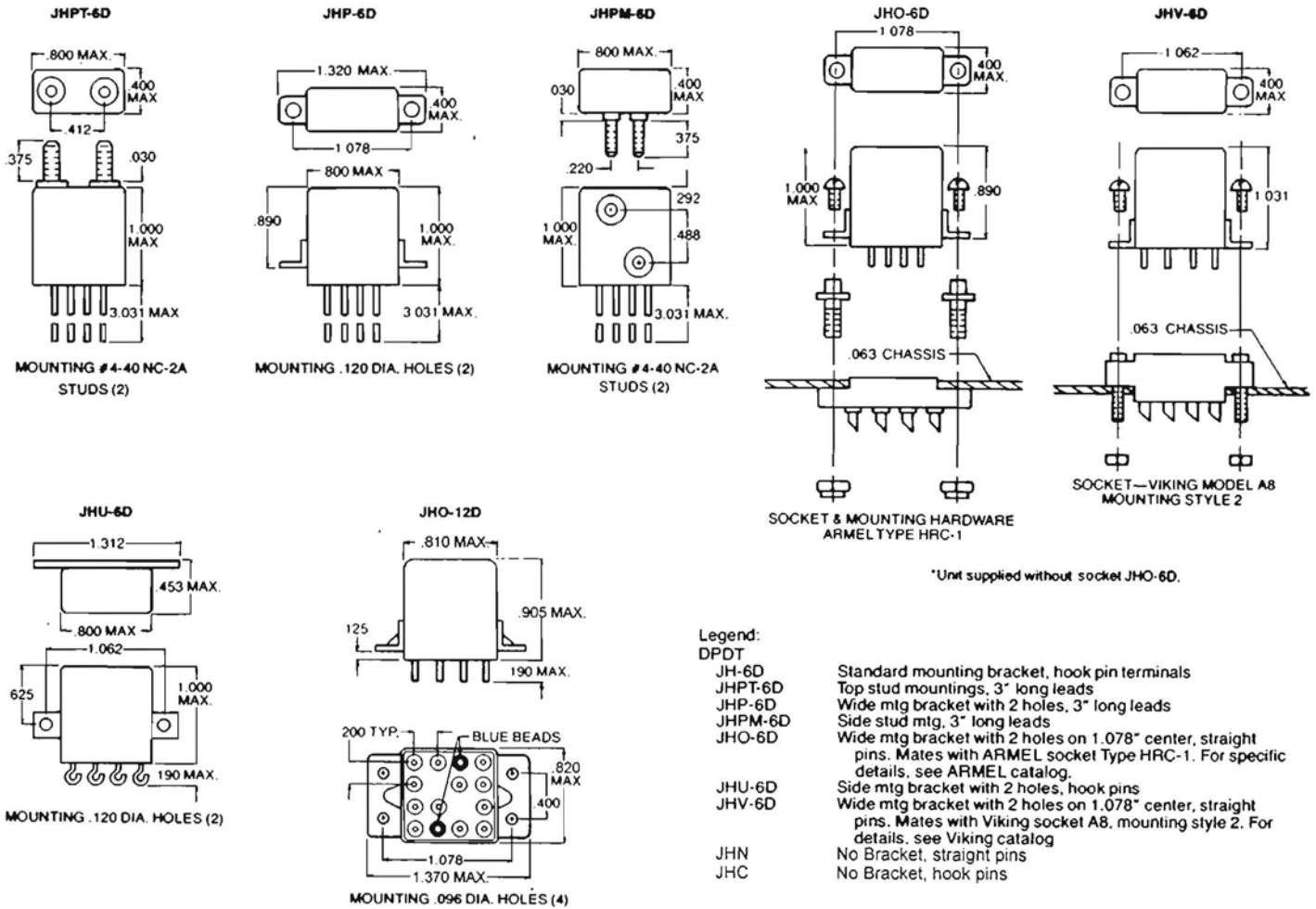
Relay Type	Maximum Pick-up mADC	Coil Resistance Ohms*	Nominal Operate Current
JH-6D-6.0mADC	6.0	7240	7.2
JH-6D-5.0mADC	5.0	10820	6.0
JH-6D-4.5mADC	4.5	16480	5.4
JH-12D-11.0mADC	11.0	4,800	13.2
JH-12D- 9.0mADC	9.0	7,500	10.8
JH-12D- 7.5mADC	7.5	11,000	9.0

\*DC coil resistance—standard tolerance ± 10%, other values of resistance can be supplied.  
Dimensions, Terminal and Mounting Variations, on next page.

*Dimensions & Schematics*



*Mounting Variations*



\*Unit supplied without socket JHO-6D.

Additional variations available upon request.