

ELECTRICAL

Contact Rating 3 Amperes
 Withstanding Voltage:
 Contact to Contact Sea Level. . . 1000 VRMS Minimum
 Contact to Ground Sea Level. . . 1800 VRMS Minimum
 Contact to Contact 70,000 Ft. . . 300 VRMS Minimum
 Contact to Ground 70,000 Ft. . . 450 VRMS Minimum

MECHANICAL

Creepage Between Contacts 0.02 Minimum
 Air Space Between Contacts 0.02 Minimum
 Contacts to Accept 0.020 ± 0.001 DIA. Pins

Contacts:

Heat Treated Beryllium Copper
 Gold Plated over Copper or Nickel Plate

Mounting Hardware:

Threaded or Clearance Hole Mounting Bushings

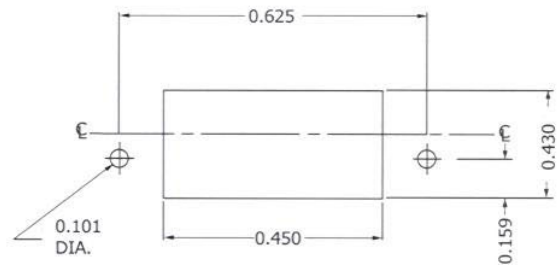
Insulation Material:

Choice of "MIL Approved" Thermosetting
 Insulations (See Page 45)

Temperature Ratings: -65°C to +125°C

Weight of Socket with Mountings: 0.15 oz.

		CHASSIS MOUNTING DATA	
		CLEARANCE HOLE FOR NO.2 SCREW	NO.2 -56 THREAD
OPEN ENTRY	SOLDER CUP		
	EYELET		
	STRAIGHT		
CLOSED ENTRY	WIRE WRAP	.24	HAND-13KLT3 HAND-S18KLT3
	EYELET		
	STRAIGHT		



RECOMMENDED CHASSIS CUT-OUT