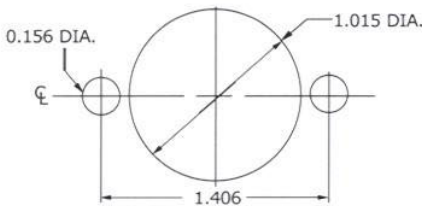


CONTACT DATA		CHASSIS MOUNTING DATA				
		CHASSIS THICKNESS	STYLE	NO. OF CONTACTS		
OPEN ENTRY	SOLDER CUP	1/16	II	21	HF-50	HF-50
			I	20	HF-59	HF-59
		1/16	II	15	HF-53	HF-53
			I	14	HF-62	HF-62
		1/16	II	9	HF-56	HF-56
			I	8	HF-65	HF-65
	TURRET	1/16	II	21	HF-51	HF-51
			I	20	HF-60	HF-60
		1/16	II	15	HF-54	HF-54
			I	14	HF-63	HF-63
		1/16	II	9	HF-57	HF-57
			I	8	HF-66	HF-66
EYELET	1/16	II	21	HF-52	HF-52	
		I	20	HF-61	HF-61	
	1/16	II	15	HF-55	HF-55	
		I	14	HF-64	HF-64	
	1/16	II	9	HF-58	HF-58	
		I	8	HF-67	HF-67	
CLOSED ENTRY	SOLDER CUP	1/16	II	21	HF-50K	HF-50K
			I	20	HF-59K	HF-59K
		1/16	II	15	HF-53K	HF-53K
			I	14	HF-62K	HF-62K
		1/16	II	9	HF-56K	HF-56K
			I	8	HF-65K	HF-65K
	EYELET	1/16	II	21	HF-52K	HF-52K
			I	20	HF-61K	HF-61K
		1/16	II	15	HF-55K	HF-55K
			I	14	HF-64K	HF-64K
		1/16	II	9	HF-58K	HF-58K
			I	8	HF-67K	HF-67K



RECOMMENDED CHASSIS CUT-OUT

## ELECTRICAL

- Wire Size:  
 Solder Cup Type . . . . . One #20 AWG  
 Turret Type . . . . . Two #20 AWG or Three #22 AWG  
 Eyelet Type . . . . . Two #20 AWG or Three #22 AWG  
 Taper Type . . . . . One AMP "37" Taper Receptacle  
 Current Rating . . . . . 7.5 Amperes

## Withstanding Voltage:

- Contact to Contact Sea Level . . . . . 1800 VRMS Minimum  
 Contact to Ground Sea Level . . . . . 3300 VRMS Minimum  
 Contact to Contact 70,000 Ft. . . . . 450 VRMS Minimum  
 Contact to Ground 70,000 Ft. . . . . 675 VRMS Minimum

## MECHANICAL

- Creepage Between Contacts . . . . . 0.12 Minimum  
 Air Space Between Contacts . . . . . 0.06 Minimum  
 Contacts to Accept 0.040 ± 0.001 DIA. Pins

## Contacts:

- Spring Temper Grade "A" Phosphor Bronze, or Heat Treated Beryllium Copper  
 Gold Plated over Copper or Nickel Plate

## Mounting Hardware:

- Special Studs, Screws, Lockwashers, and Nuts

## Insulation Material:

- Choice of "MIL Approved" Thermosetting Insulations (See Page 45)

Temperature Ratings: -65°C to +125°C

Weight of Socket with Mountings: 1.10 oz.