

ELECTRICAL

Wire Size:

- Solder Cup Type One #20 AWG
- Turret Type Two #20 AWG or
Three #22 AWG
- Eyelet Type Two #20 AWG or
Three #22 AWG
- Taper Type One AMP "37" Taper
Receptacle

Current Rating 7.5 Amperes

Withstanding Voltage:

- Contact to Contact Sea Level 1800 VRMS Minimum
- Contact to Ground Sea Level 3300 VRMS Minimum
- Contact to Contact 70,000 Ft. 450 VRMS Minimum
- Contact to Ground 70,000 Ft. 675 VRMS Minimum

MECHANICAL

- Creepage Between Contacts 0.12 Minimum
- Air Space Between Contacts 0.06 Minimum
- Contacts to Accept 0.040 ± 0.001 DIA. Pins

Contacts:

Spring Temper Grade "A" Phosphor Bronze, or Heat Treated Beryllium Copper
Gold Plated over Copper or Nickel Plate

Mounting Hardware:

Special Studs, Screws, Lockwashers, and Nuts

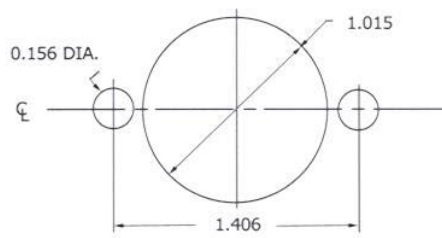
Insulation Material:

Choice of "MIL Approved" Thermosetting Insulations (See Page 45)

Temperature Ratings: -65°C to +125°C

Weight of Socket with Mountings: 0.65 oz.

CONTACT DATA	CHASSIS MOUNTING DATA						
	CHASSIS THICKNESS	STYLE	NO. OF CONTACTS	MOUNTING TYPE			
				BELOW CHASSIS	BELOW CHASSIS	ABOVE CHASSIS	
	1/16	II	21	HR-50		HR-50	
		I	20	HR-59		HR-59	
	3/32	II	21		HR-350		
		I	20		HR-359		
	1/16	II	15	HR-53		HR-53	
		I	14	HR-62		HR-62	
	1/16	II	9	HR-56		HR-56	
		I	8	HR-65		HR-65	
		1/16	II	21	HR-51		HR-51
			I	20	HR-60		HR-60
		3/32	II	21		HR-351	
			I	20		HR-360	
1/16		II	15	HR-54		HR-54	
		I	14	HR-63		HR-63	
1/16		II	9	HR-57		HR-57	
		I	8	HR-66		HR-66	
		1/16	II	21	HR-52		HR-52
			I	20	HR-61		HR-61
		3/32	II	21		HR-352	
			I	20		HR-361	
	1/16	II	15	HR-55		HR-55	
		I	14	HR-64		HR-64	
	1/16	II	9	HR-58		HR-58	
		I	8	HR-67		HR-67	
		1/16	II	21	HR-68		HR-68
			I	20	HR-71		HR-71
		3/32	II	21			
			I	20			
1/16		II	15				
		I	14				
1/16		II	9				
		I	8				



RECOMMENDED CHASSIS CUT-OUT