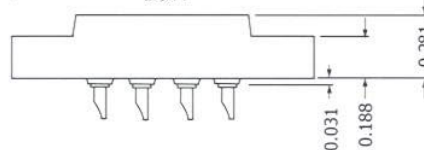
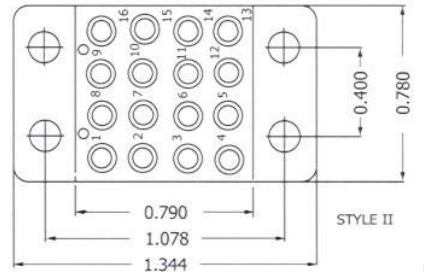
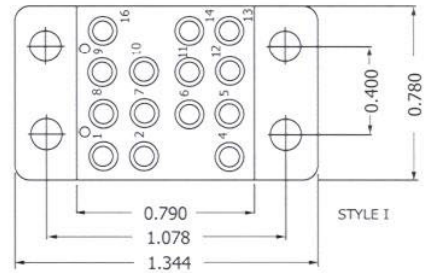
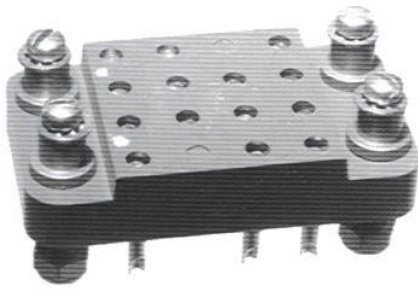


# HRCM SERIES



CONTACT DATA	CHASSIS MOUNTING DATA						
	CHASSIS THICKNESS	X-DIMENSION	STYLE	NO. OF CONTACTS	BELOW CHASSIS	ABOVE CHASSIS	
OPEN ENTRY	SOLDER CUP 3/16	.17	I	14	HRCM-1	HRCM-2	
			II	16	HRCM-601	HRCM-602	
		.14	I	14		HRCM-31	HRCM-32
			II	16		HRCM-631	HRCM-632
		.12	I	14		HRCM-41	HRCM-42
			II	16		HRCM-641	HRCM-642
	EYELET 1/4	.17	I	14	HRCM-5	HRCM-6	
			II	16	HRCM-605	HRCM-606	
		.14	I	14		HRCM-35	HRCM-36
			II	16		HRCM-635	HRCM-636
		.12	I	14		HRCM-45	HRCM-46
			II	16		HRCM-645	HRCM-646
STRAIGHT 3/16	.17	I	14		HRCM-4		
		II	16		HRCM-604		
	.14	I	14				
		II	16				
	.12	I	14				
		II	16				
CLOSED ENTRY	SOLDER CUP 3/16	.17	I	14	HRCM-1K	HRCM-2K	
			II	16	HRCM-601K	HRCM-602K	
		.14	I	14		HRCM-31K	HRCM-32K
			II	16		HRCM-631K	HRCM-632K
		.12	I	14		HRCM-41K	HRCM-42K
			II	16		HRCM-641K	HRCM-642K
	EYELET 1/4	.17	I	14	HRCM-5K	HRCM-6K	
			II	16	HRCM-605K	HRCM-606K	
		.14	I	14		HRCM-35K	HRCM-36K
			II	16		HRCM-635K	HRCM-636K
		.12	I	14		HRCM-45K	HRCM-46K
			II	16		HRCM-645K	HRCM-646K
	STRAIGHT 1/8	.17	I	14		HRCM-4K	
			II	16		HRCM-604K	
		.14	I	14			
			II	16			
		.12	I	14			
			II	16			

## ELECTRICAL

Wire Size:

- Solder Cup Type.....One #20 AWG
- Eyelet Type.....Two #20 AWG or Three #22 AWG

Current Rating.....

3 Amperes

Withstanding Voltage:

- Contact to Contact Sea Level.....2700 VRMS Minimum
- Contact to Ground Sea Level.....2250 VRMS Minimum
- Contact to Contact 70,000 Ft.....560 VRMS Minimum
- Contact to Ground 70,000 Ft.....500 VRMS Minimum

## MECHANICAL

- Creepage Between Contacts.....0.17 Minimum
- Air Space Between Contacts.....0.11 Minimum
- Contacts to Accept 0.030 ± 0.001 DIA. Pins

Contacts:

- Spring Temper Grade "A" Phosphor Bronze, or Heat Treated Beryllium Copper
- Gold Plated over Copper or Nickel Plate

Mounting Hardware:

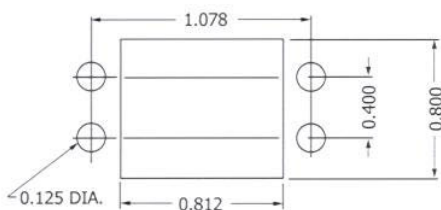
- Special Studs, Screws, Lockwashers, and Nuts

Insulation Material:

- Choice of "MIL Approved" Thermosetting Insulations (See Page 45)

Temperature Ratings: -65°C to +125°C

Weight of Socket with Mountings: 0.43 oz.



RECOMMENDED CHASSIS CUT-OUT