

CONTACT DATA		CHASSIS MOUNTING DATA				
		CHASSIS THICKNESS	X-DIMENSION			
OPEN ENTRY	SOLDER CUP	1/16	.17	HRKB - 1		HRKB - 2
		3/32	.14		HRKB - 31	HRKB - 32
		1/8	.12		HRKB - 41	HRKB - 42
	EYELET	1/16	.17	HRKB - 5		HRKB - 6
		3/32	.14		HRKB - 35	HRKB - 36
		1/8	.12		HRKB - 45	HRKB - 46
	STRAIGHT	1/16				HRKB - 4
		3/32				
		1/8				
CLOSED ENTRY	SOLDER CUP	1/16	.17	HRKB - 1K		HRKB - 2K
		3/32	.14		HRKB - 31K	HRKB - 32K
		1/8	.12		HRKB - 41K	HRKB - 42K
	EYELET	1/16	.17	HRKB - 5K		HRKB - 6K
		3/32	.14		HRKB - 35K	HRKB - 36K
		1/8	.12		HRKB - 45K	HRKB - 46K
	STRAIGHT	1/16				HRKB - 4K
		3/32				
		1/8				

ELECTRICAL

Wire Size:

Solder Cup Type. One #20 AWG
 Eyelet Type. Two #20 AWG or
 Three #22 AWG

Current Rating. 3 Amperes

Withstanding Voltage:

Contact to Contact Sea Level. 1000 VRMS Minimum
 Contact to Ground Sea Level. 2250 VRMS Minimum
 Contact to Contact 70,000 Ft. 300 VRMS Minimum
 Contact to Ground 70,000 Ft. 500 VRMS Minimum

MECHANICAL

Creepage Between Contacts. 0.09 Minimum

Air Space Between Contacts. 0.03 Minimum

Contacts to Accept 0.030 ± 0.001 DIA. Pins

Contacts:

Spring Temper Grade "A" Phosphor Bronze or
 Heat Treated Beryllium Copper
 Gold Plated over Copper or Nickel Plate

Mounting Hardware:

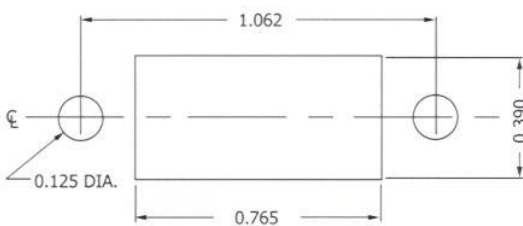
Special Studs, Screws, Lockwashers, and Nuts

Insulation Material:

Choice of "MIL Approved" Thermosetting
 Insulations (See Page 45)

Temperature Ratings: -65°C to +125°C

Weight of Socket with Mountings: 0.26 oz.



RECOMMENDED CHASSIS CUT-OUT