

A COMPANY OF STPI GROUP

**SE410, SME410,  
SEL410 & SMEL410**  
**Military Specified**  
**Meets MIL-DTL-12883**

**General Characteristics**

Weight

Dash Numbers 01-12:

Dash Numbers 13-24:

Grommet:

Mounting Hardware:

Socket Contact Material:

Socket Contact Type:

0.132 lbs (60g) Max.

0.100 lbs (45g) Max.

Silicone Rubber

Stainless Steel or Cadmium Plated

Gold Plated Copper Alloy

Closed Entry, Crimp Type,

Rear Entry and Release

**Environmental Characteristics**

Temperature Range:

Vibration (Sinusoidal):

Shock (any axis):

-70°C to +125°C

30g 10-3,000 Hz

200g, 6 ms

**Electrical Characteristics**

Contact Resistance:

Dielectric Strength

At Sea Level:

At 80,000 feet:

Insulation Resistance:

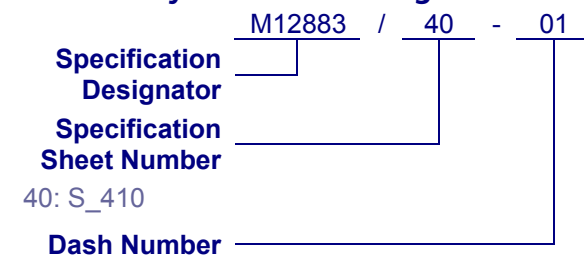
6 MΩ

1,500 Vrms Max.

500 Vrms

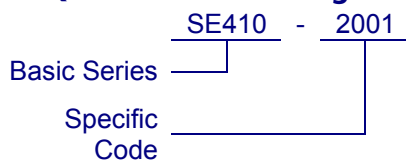
1,000 MΩ Min

**Military Part Numbering**



See Charts

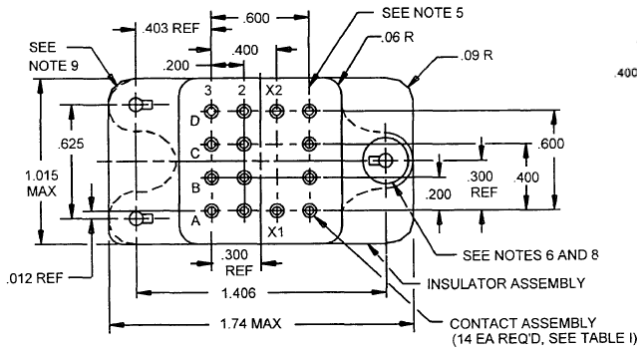
**QPL Part Numbering**



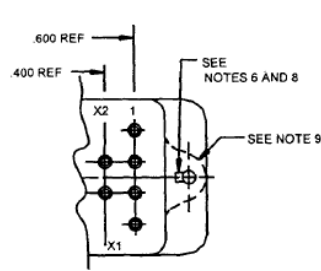
### Dash Numbers – Specification Sheet Number 40

Dash Number	Basic Series	Specific Code	Body Type	Stud Type	Hardware Type	Number of Contacts	Contact Size (AWG)
01	SE410	2001	A	Loose	Cadmium Plated	14	16
01S	SE410	2001S	A	Loose	Stainless Steel	14	16
02	SE410	2002	B	Loose	Cadmium Plated	14	16
02S	SE410	2002S	B	Loose	Stainless Steel	14	16
03	SE410	2003	C	Loose	Cadmium Plated	14	16
03S	SE410	2003S	C	Loose	Stainless Steel	14	16
04	SE410	2004	D	Loose	Cadmium Plated	14	16
04S	SE410	2004S	D	Loose	Stainless Steel	14	16
05	SE410	2005	A	Loose	Cadmium Plated	14	16
05S	SE410	2005S	A	Loose	Stainless Steel	14	20
06	SEL410	2006	E	Loose	Cadmium Plated	16	20
06S	SEL410	2006S	E	Loose	Stainless Steel	16	16
07	SE410	1001	A	Fixed	Cadmium Plated	14	16
07S	SE410	1001S	A	Fixed	Stainless Steel	14	16
08	SE410	1002	B	Fixed	Cadmium Plated	14	16
08S	SE410	1002S	B	Fixed	Stainless Steel	14	16
09	SE410	1003	C	Fixed	Cadmium Plated	14	16
09S	SE410	1003S	C	Fixed	Stainless Steel	14	16
10	SE410	1004	D	Fixed	Cadmium Plated	14	16
10S	SE410	1004S	D	Fixed	Stainless Steel	14	16
11	SE410	1005	A	Fixed	Cadmium Plated	14	20
11S	SE410	1005S	A	Fixed	Stainless Steel	14	20
12	SEL410	1012	E	Fixed	Cadmium Plated	16	16
12S	SEL410	1012S	E	Fixed	Stainless Steel	16	16
13	SME410	2001	A	Loose	Cadmium Plated	14	16
13S	SME410	2001S	A	Loose	Stainless Steel	14	16
14	SME410	2002	B	Loose	Cadmium Plated	14	16
14S	SME410	2002S	B	Loose	Stainless Steel	14	16
15	SME410	2003	C	Loose	Cadmium Plated	14	16
15S	SME410	2003S	C	Loose	Stainless Steel	14	16
16	SME410	2004	D	Loose	Cadmium Plated	14	16
16S	SME410	2004S	D	Loose	Stainless Steel	14	16
17	SME410	2005	A	Loose	Cadmium Plated	14	20
17S	SME410	2005S	A	Loose	Stainless Steel	14	20
18	SMEL410	2001	E	Loose	Cadmium Plated	16	16
18S	SMEL410	2001S	E	Loose	Stainless Steel	16	16
19	SME410	1001	A	Fixed	Cadmium Plated	14	16
19S	SME410	1001S	A	Fixed	Stainless Steel	14	16
20	SME410	1002	B	Fixed	Cadmium Plated	14	16
20S	SME410	1002S	B	Fixed	Stainless Steel	14	16
21	SME410	1003	C	Fixed	Cadmium Plated	14	16
21S	SME410	1003S	C	Fixed	Stainless Steel	14	16
22	SME410	1004	D	Fixed	Cadmium Plated	14	16
22S	SME410	1004S	D	Fixed	Stainless Steel	14	16
23	SME410	1005	A	Fixed	Cadmium Plated	14	20
23S	SME410	1005S	A	Fixed	Stainless Steel	14	20
24	SMEL410	1001	E	Fixed	Cadmium Plated	16	16
24S	SMEL410	1001S	E	Fixed	Stainless Steel	16	16

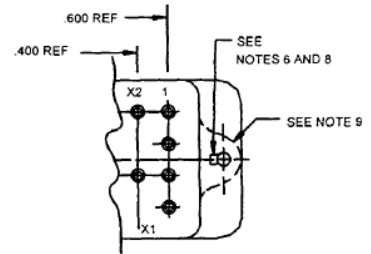
## Terminal Layout



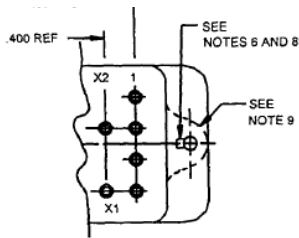
Body Style A



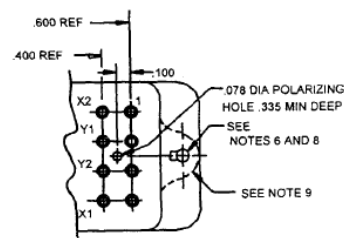
Body Style B



Body Style C

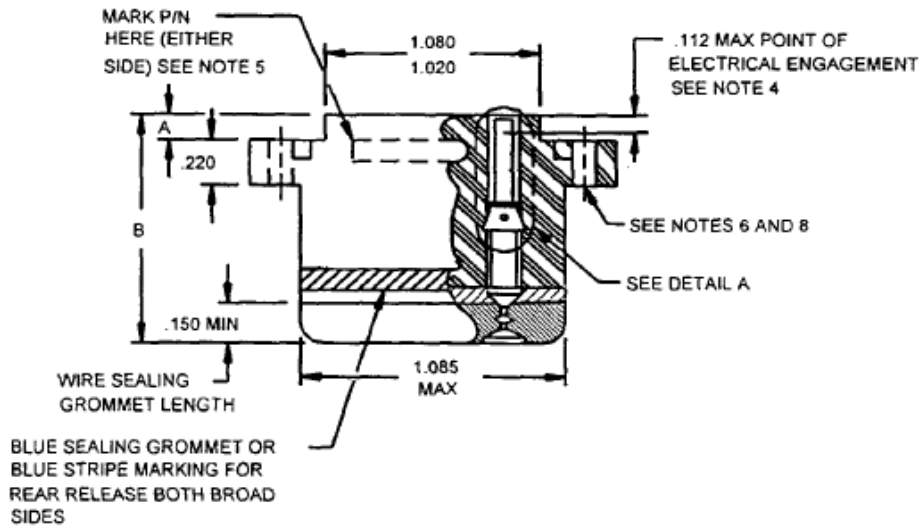


Body Style D



Body Style E

## Body Layout



Dash number	A (mm)	B max (mm)
-01 thru -12	.140 - .135 (3.56 - 3.43)	1.130 (28.70)
-13 thru -24	.093 (2.36)	.89 (2.26)