



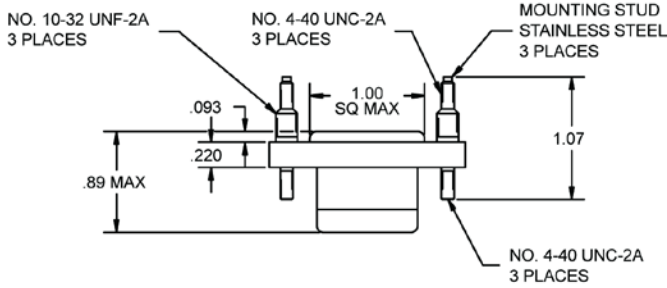
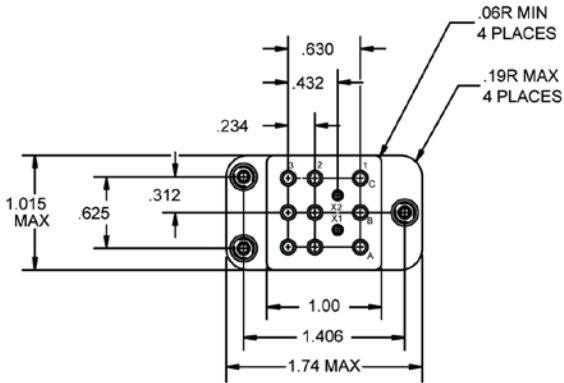
Basic socket series designation for:

Series KC

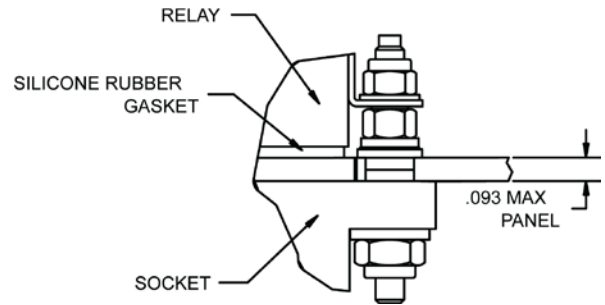
NOT qualified but designed to the standards and requirements of:

MIL-DTL-12883/48

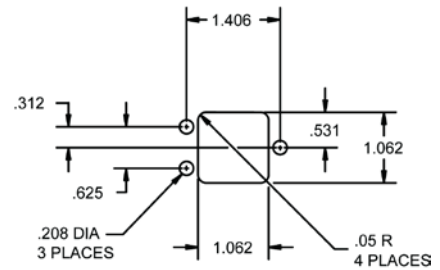
SOCKET DRAWING



HARDWARE MOUNTING
MOUNTING DETAIL 3 PLACES



MOUNTING DIMENSIONS
SUGGESTED MOUNTING HOLE LAYOUT



GENERAL CHARACTERISTICS

1. Supplied with mounting hardware No. 12 contacts, No. 12 crimp for power terminals; No. 16 contacts, No. 16 crimp for coil terminals.	
2. Standard tolerances	.xx ±.01; xxx ± .005
3. Weight	.112 lbs. max
4. Temperature range	-70° C to +125° C

AMERICAS.
Tel: +1 714-736-7599
<http://www.esterline.com/powersystems>

EUROPE.
Tel: +33 3 87 97 31 01
Fax: +33 3 87 97 96 86

ASIA
Tel: +852 2 191 3830
Fax: +852 2 389 5803