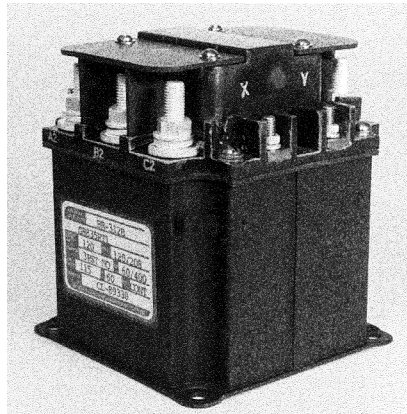


B-312 Series, Rated up to 175 Amps, 253/440 VAC, 50-60 Hz

See Part Number Listing on Last Page

Product Facts

- 3PST NO, Double break
- Gasket sealed
- 235/440 VAC, 50-60 Hz, 3 phase
- Auxiliary contacts available
- Meets many requirements of MIL-PRF-6106



Performance Data

Electrical Characteristics

Contact Arrangement — 3PST NO, Double Break

Rated Operating Voltage — 253/440 VAC, 50-60 Hz, 3 phase

Current, Resistive — 175 Amps

Current, Inductive — B312DB — 70 Amps

Current, Motor — 150 Amps

Current, Rupture — 1,500 Amps

General Characteristics

Temperature Range — -55°C to +71°C

Operating Cycles (Life) at Rated Resistive Load, Min. — 50,000 cycles

Operating Cycles (Life) Mechanical, Min. — 100,000 cycles

Dielectric Strength — All Circuits to Ground — 1,500 Vrms
Circuit to Circuit — 1,500 Vrms
Coil to Ground and Aux. Contacts — 1,000 Vrms

Weight, Max. — 3.0 lbs

Coil Characteristics

Duty Cycle — Continuous, economizing

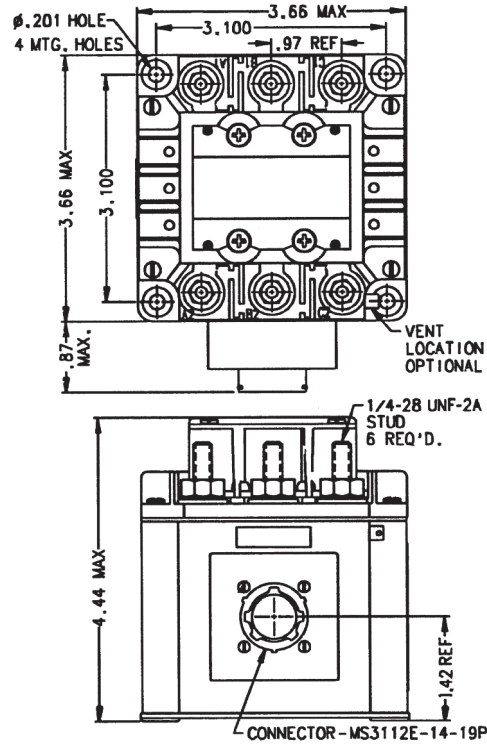
Operating Voltage, Nom. — 28 Vdc

Pickup Voltage — 18 Vdc

Dropout Voltage — B312DB — 1.5 to 7 Vdc
B312CH — 1 to 7 Vdc

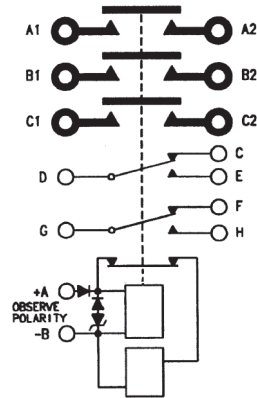
For factory-direct application assistance, phone 419-521-9500 or fax 419-526-2749.

B-312 Series, Rated up to 175 Amps, 253/440 VAC, 50-60 Hz (Continued)



Mounting Style A

Circuit Configurations (Consult factory for other available circuit configurations)



Circuit Configuration 1

HARTMAN Part Number	Construction Type	Mounting Style	Coil Type	Circuit Config.	TE Part Number
B-312DB	Gasket/Vented	A	Continuous, Economizing	1	1616004-7

For factory-direct application assistance, phone 419-521-9500 or fax 419-526-2749.