

**B-393 Series, Rated up to 260 Amps, 120/208 VAC, 400 Hz**

**Product Facts**

- 3PDT, Center off, double break
- Gasket sealed

**Performance Data**

**Electrical Characteristics**

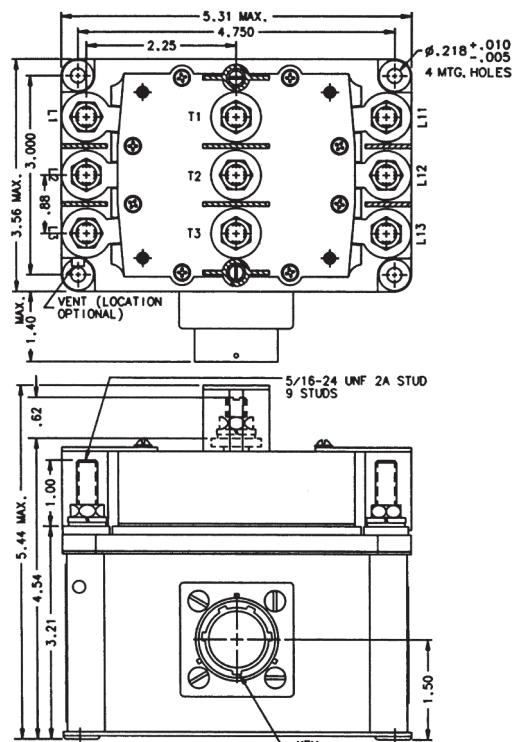
- Main Contacts** —
- Contact Arrangement** — 3PDT, Center Off, Double Break
- Rated Operating Voltage** — 120/208 VAC, 400 Hz
- Resistive Rating** — 260 Amps
- Inductive Rating** — 260 Amps
- Rupture Rating** — 2600 Amps
- Auxiliary Contacts** —
- Contact Arrangement** — 4PST NO, 2PST NC
- Resistive Rating** — 5 Amps
- Inductive Rating** — 5 Amps
- Lamp Rating** — 5 Amps

**General Characteristics**

- Temperature Range** — -55°C to +71°C
- Operating Cycles (Life) at Rated Resistive Load** — 50,000 cycles
- Operating Cycles (Life) Mechanical** — 100,000 cycles
- Altitude Max.** — 40,000 ft.
- Weight** — 5 lbs

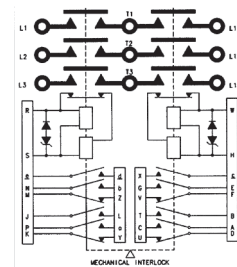
**Coil Characteristics**

- Duty Cycle** — Continuous, economizing
- Operating Voltage, Nom.** — 28 Vdc
- Pickup Voltage, Max.** — 18 Vdc
- Dropout Voltage** —
- R-S Coil — 14 Vdc
- W-H Coil — 7 Vdc



**Mounting Style A**

**Circuit Configurations** (Consult factory for other available circuit configurations)



**Circuit Configuration 1**

HARTMAN Part Number	Construction Type	Mounting Style	Coil Type	Circuit Config.	TE Part Number
B-393T	Gasket/Vented	A	Continuous, Economizing	1	1616044-5

For factory-direct application assistance, phone 419-521-9500 or fax 419-526-2749.