

## A-702 Series Cutout — Reverse Current, Rated up to 600 Amps, 28 Vdc

### Product Facts

- SPST NO
- Gasket sealed

### Performance Data

#### Electrical Characteristics

- Contact Arrangement** — SPST NO, Double Break
- Rated Operating Voltage** — 28 Vdc
- Resistive Rating** — 600 Amps
- Reverse Current Dropout** — 18 to 35 Amps
- Differential Pickup** —  $.5 \pm .15$

#### General Characteristics

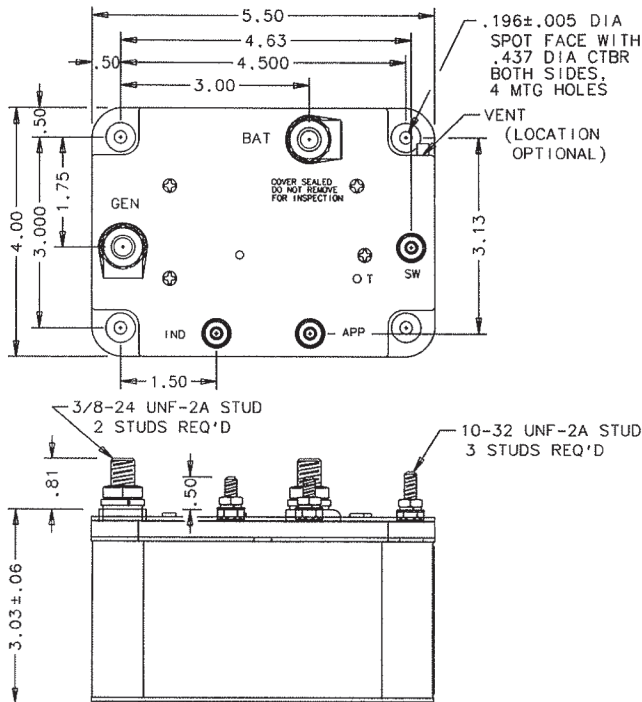
- Temperature Range** —  $-55^{\circ}\text{C}$  to  $+71^{\circ}\text{C}$
- Operating Cycles (Life) at Rated Resistive Load, Min.** — 50,000 cycles
- Operating Cycles (Life) Mechanical, Min.** — 100,000 cycles
- Electrical** — 50,000 min.
- Dielectric Strength** — All Circuits to Ground — 1,250 Vrms  
Circuit to Circuit — 1,250 Vrms

Coil to Ground and Aux. Contacts — 500 Vrms

**Weight, Max.** — 3.9 lbs.

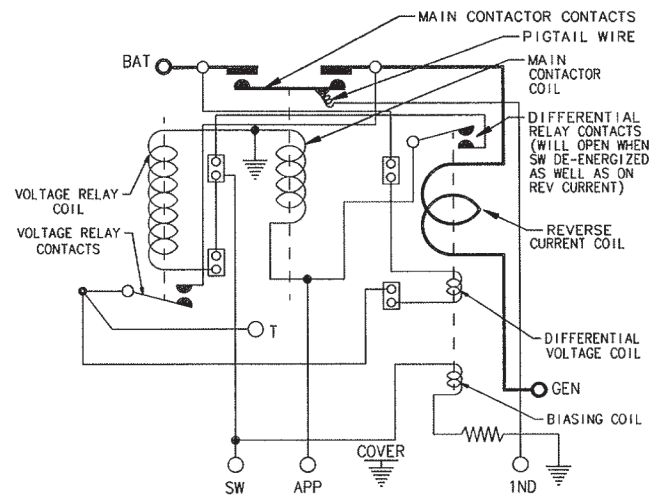
#### Coil Characteristics

- Duty Cycle** — Continuous
- Duty Cycle when using "APP"** — Continuous
- Nom. Coil Voltage** — 24 to 30 Vdc
- Pickup Voltage, Max.** — 18 Vdc
- Dropout Voltage** — 0.5 to 7.0 Vdc



Mounting Style A

### Circuit Configurations (Consult factory for other available circuit configurations)



Circuit Configuration 1

For factory-direct application assistance, phone 419-521-9500 or fax 419-526-2749.

HARTMAN Part Number	Construction Type	Mounting Style	Coil Type	Circuit Config.	TE Part Number
A-702AAP	Gasket/Vented	A	Continuous	1	1-1616109-3