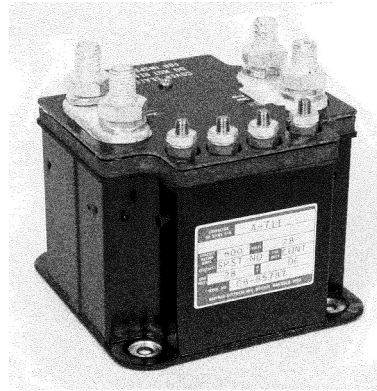


A-711 Series Relay, Automatic Dropout, Rated up to 600 Amps, 29 Vdc

See Part Number Listing on Last Page

Product Facts

- SPST NO, Double break
- Gasket sealed
- Auxiliary contacts available
- Meets many requirements of MIL-PRF-6106



Performance Data

Electrical Characteristics

Contact Arrangement — SPST NO, Double Break
Operating Voltage, Max. — 29 Vdc
Resistive Rating — 600 Amps
Pickup Voltage, Max. — 17 Vdc
Dropout Voltage, Max. — 14 Vdc, except for A-711 which is 1 to 5 Vdc
Pickup Current, Max. — 490 Amps
Dropout Current at any Contactor Voltage — 150 ± 15 Amps, except for A-711R which is S1 — 135 ± 15 Amps and S2 — 235 ± 20 Amps

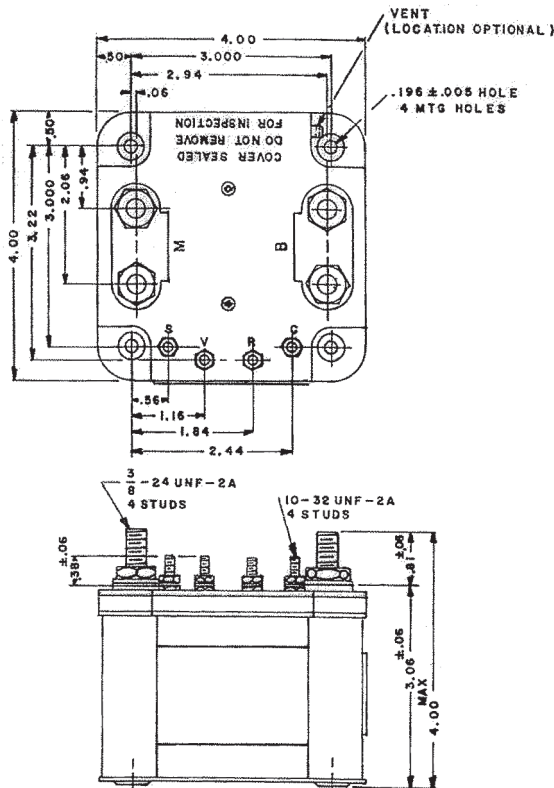
General Characteristics

Temperature Range — -55°C to +71°C
Operating Cycles (Life) at Rated Resistive Load, Min. — 25,000 cycles
Operating Period, Max. — 3 min.
Weight, Max. —
 A-711JF, A-711JF — 3 lbs 13 oz
 A-711Z — 3 lbs 6 oz
 A-711R — 3 lbs 5 oz

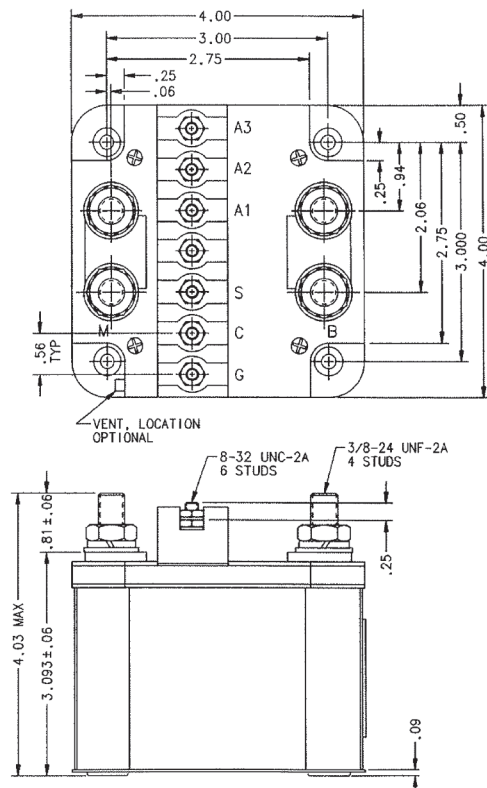
Coil Characteristics

Duty Cycle — Intermittent
Coil Current, Max. —
 A-711AJ, A-711JM — 2 Amps
 A-711Z — 0.6 Amp
 A-711R — 1.0 Amp
Coil Voltage, Nom. — 28 Vdc
Signal Resistor — 20 Ohm ± 10%, 20 W
Coil Res., "C" Term. to "GND" — 36 Ohm ± 10%

For factory-direct application assistance, phone 419-521-9500 or fax 419-526-2749.



Mounting Style A

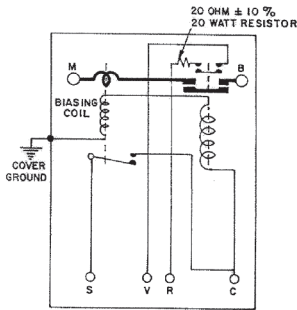


Mounting Style B

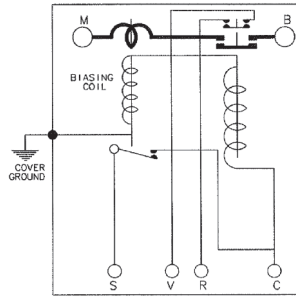
For factory-direct application assistance, phone 419-521-9500 or fax 419-526-2749.

A-711 Series Relay, Automatic Dropout, Rated up to 600 Amps, 29 Vdc (Continued)

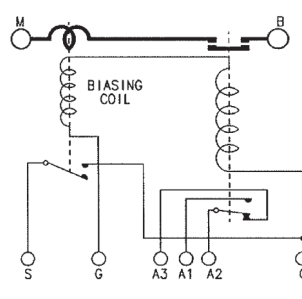
Circuit Configurations (Consult factory for other available circuit configurations)



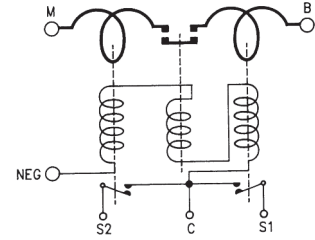
Circuit Configuration 1



Circuit Configuration 2



Circuit Configuration 3



Circuit Configuration 4

HARTMAN Part Number	Construction Type	Mounting Style	Coil Type	Circuit Config.	TE Part Number
A-711JF	Gasket/Vented	A	Intermittent	1	1-1616109-6
A-711JM	Gasket/Vented	A	Intermittent	2	1-1616109-7
A-711Z	Gasket/Vented	B	Intermittent	3	6-1616071-3
A-711R	Gasket/Vented	A	Intermittent	4	1-1616109-8

For factory-direct application assistance, phone 419-521-9500 or fax 419-526-2749.