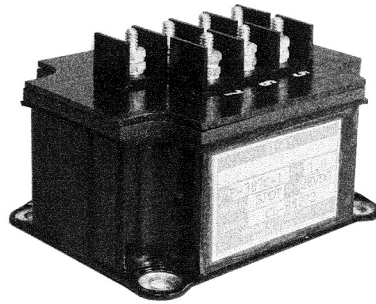


## E-387 Series Current Sensor, Rated up to 25 Amps, 28 Vdc

### Product Facts

- SPDT
- Gasket sealed
- Meets many requirements of MIL-PRF-6106



### Performance Data

#### Electrical Characteristics

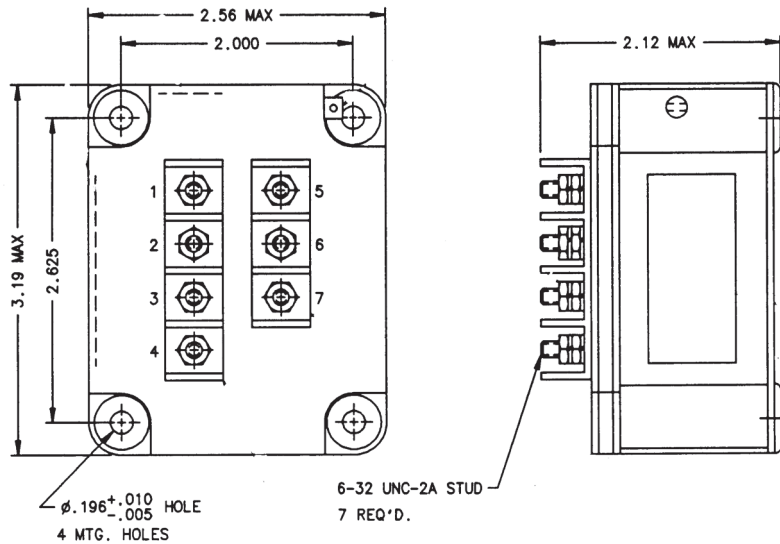
Indicator Contact Arrangement — SPDT  
 Rated Operating Voltage — 28 Vdc  
 Resistive Rating — 1 Amp

### General Characteristics

Dielectric Strength — 1,000 Vrms, 60 Hz  
 Insulation Resistance @ 500 Vdc & 20°C & 50% R.H. (Max.) — 1,000 megohm min.  
 Weight, Max. — 8 oz

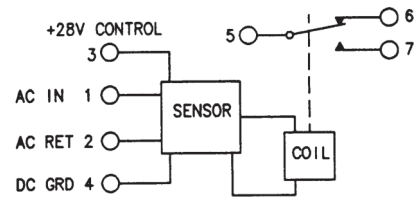
### Coil Characteristics

Duty Cycle — Continuous  
 Control Power — 28 Vdc  
 Sensor Input — 400 Hz ± 100 Hz  
 Pickup Current — 14 ± 2 Amps  
 Dropout Current — 7 ± 1 Amp  
 Continuous Sensor Current — 25 Amp, max.



Mounting Style A

**Circuit Configurations** (Consult factory for other available circuit configurations)



Circuit Configuration 1

HARTMAN Part Number	Construction Type	Mounting Style	Coil Type	Circuit Config.	TE Part Number
E-387C-1	Gasket/Vented	A	Continuous	1	2-1616126-3

For factory-direct application assistance, phone 419-521-9500 or fax 419-526-2749.