

### ELECTRICAL

- Wire Size: One #20 AWG
- Solder Cup Type ..... Two #20 AWG or Three #22 AWG
- Turret Type ..... Two #20 AWG or Three #22 AWG
- Eyelet Type ..... One AMP "37" Taper Receptacle
- Taper Type ..... 7.5 Amperes
- Current Rating ..... 7.5 Amperes
- Withstanding Voltage:
  - Contact to Contact Sea Level ..... 2700 VRMS Minimum
  - Contact to Ground Sea Level ..... 2700 VRMS Minimum
  - Contact to Contact 70,000 Ft. .... .560 VRMS Minimum
  - Contact to Ground 70,000 Ft. .... .560 VRMS Minimum

### MECHANICAL

- Creepage Between Contacts ..... 0.16 Minimum
- Air Space Between Contacts ..... 0.09 Minimum
- Contacts to Accept 0.040 ± 0.001 DIA. Pins

#### Contacts:

Spring Temper Grade "A" Phosphor Bronze, or Heat Treated Beryllium Copper  
Gold Plated over Copper or Nickel Plate

#### Mounting Hardware:

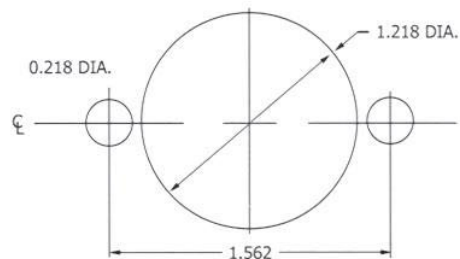
Special Studs, Screws, Lockwashers, and Nuts

#### Insulation Material:

Choice of "MIL Approved" Thermosetting Insulations (See Page 45)

Temperature Ratings: -65°C to +125°C  
Weight of Socket with Mountings: 0.96 oz.

CONTACT DATA	CHASSIS MOUNTING DATA				
	CHASSIS THICKNESS	X-DIMENSION	X		
			BELOW CHASSIS	ABOVE CHASSIS	
 SOLDER CUP	1/32	.12		HRS - 1	HRS - 2
	3/32	.09		HRS - 31	HRS - 32
	1/8	.06	HRS - 41		HRS - 42
 EYELET	1/32	.12		HRS - 5	HRS - 6
	3/32	.09		HRS - 35	HRS - 36
	1/8	.06	HRS - 45		HRS - 46
 TURRET	1/32	.12		HRS - 3	HRS - 4
	3/32	.09		HRS - 33	HRS - 34
	1/8	.06	HRS - 43		HRS - 44
 TAPER PIN	1/32	.12		HRS - 7	HRS - 8
	3/32	.09		HRS - 37	HRS - 38
	1/8	.06	HRS - 47		HRS - 48
 STRAIGHT	1/32				HRS - 10
	3/32				
	1/8				



RECOMMENDED CHASSIS CUT-OUT