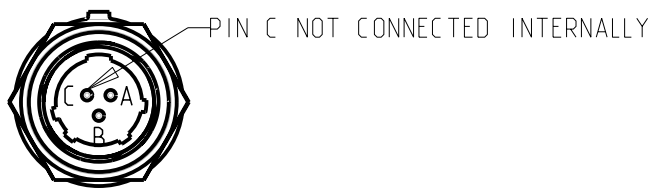


A ELECTRICAL CHARACTERISTICS:

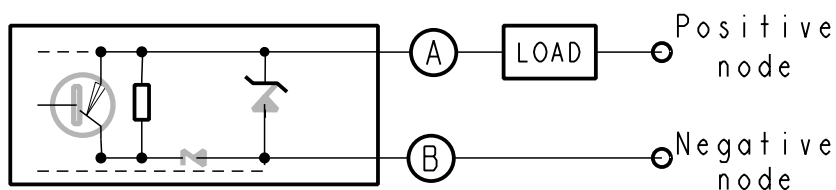
POWER SUPPLY*			Load**		
Nominal	Min	Max	Nominal	Min	Max
28VDC	16V	32.5V	750Ω	400Ω	1000Ω

*power supply is measured between positive node and negative node (cf diagram below)
 **tolerance 5%
 ELECTRICAL CONTINUITY: 2.5mΩ max BETWEEN CASE AND CONNECTOR
 SWITCHING REPOSE TIME (Ton & Toff): 5ms max
 SWITCHING FREQUENCY: 100Hz max
 INSULATION RESISTANCE: 100MΩ / 500 Vdc
 DIELECTRIC STRENGTH: 1000 VAC / 50Hz / 1mA
 PROTECTION AGAINST: POLARITY INVERSION AND LOAD SHORT CIRCUIT

CONNECTION OUTPUT: D38999/25YA98PN



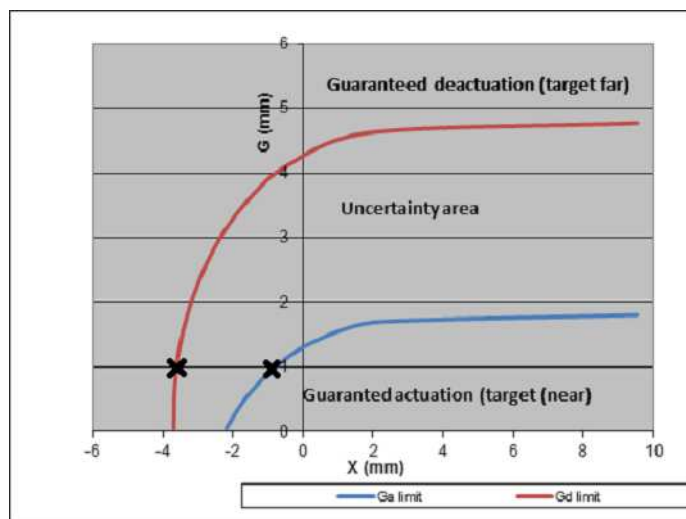
WIRING DIAGRAM:



OUTPUT FEATURES :

I LOAD	<1mA	1<1<3mA	3<1<6mA	6<1<12mA	>12mA
OUTPUT STATE	FAILURE IPD OR OPEN CIRCUIT	NO CONDUCTIVE OUTPUT	FAILURE IPD	CONDUCTIVE OUTPUT	FAILURE SHORT CIRCUIT BETWEEN A AND B OR OVERLOAD
	TARGET FAR		TARGET NEAR		

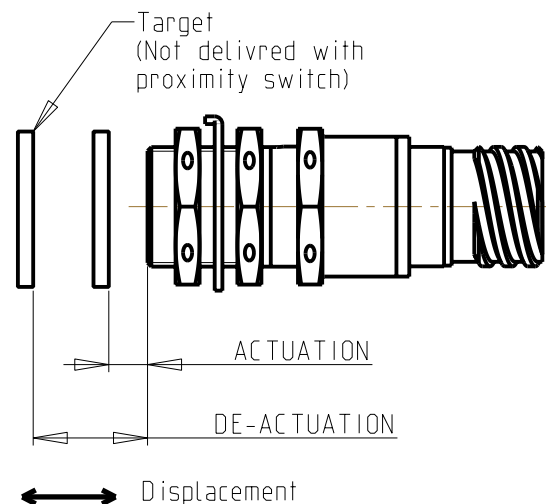
OUTPUT CONDUCTIVE WHEN TARGET IS IN ACTUATION AREA. (Normally Open)



SWITCHING DISTANCE DEFINED FOR :

TARGET IN FERRO MAGNETIC STEEL 17-4PH WITH 16mm DIAMETER AND 1mm THICKNESS MINIMUM

**ATP (as follow)
Frontal actuation / de-actuation**



Head-on Actuation min ≥ 1.8mm (tested in ATP)
 Head-on De-actuation max ≤ 4.7mm (tested in ATP)

B ENVIRONMENT CHARACTERISTICS:

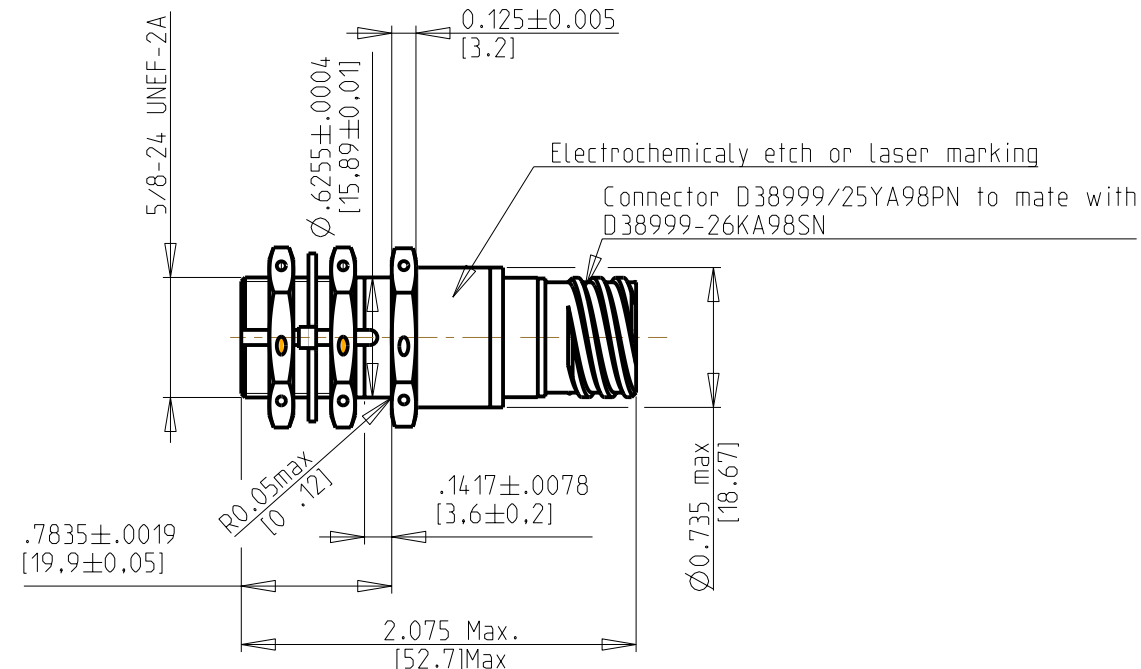
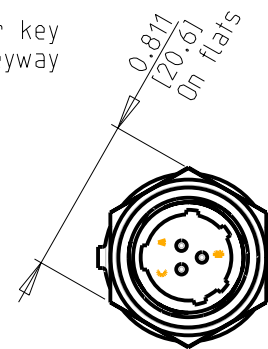
OPERATING TEMPERATURE: RTCA DO-160G SECTION 4 CATEGORY D2 (-55 °C to +85 °C)
 SHORT TIME OPERATING TEMPERATURE: RTCA DO-160G SECTION 4 CATEGORY D2
 ALTITUDE: RTCA DO-160G SECTION 4 CATEGORY D2
 TEMPERATURE VARIATION: RTCA DO-160G SECTION 5 CATEGORY A
 HUMIDITY: RTCA DO-160G SECTION 6 CATEGORY C
 SHOCKS & CRASH SAFETY: RTCA DO-160G SECTION 7 CATEGORY B
 VIBRATION: RTCA DO-160G SECTION 8 CATEGORY S - CURVE W & E1
 EXPLOSIVE ATMOSPHERE: RTCA DO-160G SECTION 9 CAT H
 WATERPROOFNESS: MIL-PRF-8805F WATERTIGHT SYMBOL 3
 FLUID SUSCEPTIBILITY: RTCA DO-160G SECTION 11 CATEGORY F
 SAND & DUST: RTCA DO-160G SECTION 12 CATEGORY S
 FUNGUS: RTCA DO-160G SECTION 13 CATEGORY F
 SALT SPRAY: RTCA DO-160G SECTION 14 CATEGORY S
 MAGNETIC EFFECT: RTCA DO-160D SECTION 15 CATEGORY A
 POWER INPUT: RTCA DO-160D SECTION 16 CATEGORY Z
 VOLTAGE SPIKE: RTCA DO-160G SECTION 17 CATEGORY A
 AUDIO FREQUENCY CONDU. SUSCEPT.: RTCA DO-160D SECTION 18 CATEGORY Z
 INDUCED SIGNAL SUSCEPTIBILITY: RTCA DO-160G SECTION 19 CATEGORY ZW
 RADIO FREQUENCY SUSCEPTIBILITY: RTCA DO-160G SECTION 20 CATEGORY Y
 EMISSION OF RADIO FREQUENCY ENERGY: RTCA DO-160G SECTION 21 CATEGORY M
 LIGHTNING EFFECTS: RTCA DO-160G SECTION 22 CATEGORY B3H3L3
 ICING: RTCA DO-160G SECTION 24 CATEGORY A
 ELECTROSTATIC DISCHARGE: RTCA DO-160D SECTION 25 CATEGORY A

For fluids /
 Fuels:-Aviation Jet fuel (F34)
 Hydraulic fluids:
 -Phosphate ester type 4 (Skydrol 500b)
 -Mineral based (Mil-H-5606)
 De Icing fluid:-ethylene Glycol
 Lubricating oil:-turbo oil 2380
 Solvents and cleaning fluid:-Isopropyl alcohol

MECHANICAL CHARACTERISTICS:

-MATERIAL : STAINLESS STEEL AISI 304L INCLUDING FRONT FACE
 -TIGHTENING TORQUE: 10Nm max
 -WEIGHT: 70g max
 -2 Stainless steel nut MS 21340-05
 -1 Stainless steel lock washer MS 25081-C6

Connector master key rotated 0° ±10° from housing keyway



C WIRING:

PROXIMITY SWITCH MUST BE USED WITH AWG24 TWISTED & SHIELDED WIRES (E M I)
 WIRING EXTERNAL TO FUSELAGE MUST HAVE 360° SHIELD BOND

84792000

Product:

C	UPDATED : ELECTRICAL CHARACTERISTICS	Modified by	G_BRUN	19/10/2023
	HSS-DDM-VAL-GEN2023-35	Verified by	K_CREST	19/10/2023
		Authorized by	F_SALA	19/10/2023
Toler. gene. Lin ± / mm		This document is the property of Crouzet-Automatismes. It's contents cannot be reproduced or divulged without the company's written approval. The product data and specifications found on this document do not constitute any contractual obligation. Crouzet-Automatismes and its subsidiaries reserve the right to modify the specifications. All rights of reproduction, modification, reprinting, and translation reserved for all countries.		
Toler. gene. Ang ± / degrees				
CROUZET	General Raw surface Ra ✓	Scale 1/1		
2. rue du Dr ABEL BP 59. 26902. Valence CEDEX 9 France	Customer: CATALOG PRODUCT	Customer Ref.: NA		
	Designation/FR: DETECTEUR DE PROXIMITE	PFT001:0<C>;0<M>		
	Designation/GB: PROXIMITY SWITCH	Department CT		
Request: HSS-DDM-VAL-GEN2023-35	Designed by M_VERDIER 06/06/2017	Index Format Folio		
	Verified by PE_BONNET 06/06/2017	C A3 1/1		
NATO code: FA0X2	Authorized by F_SALA 06/06/2017	FT84792000GB		