

BIG MODEL CIRCUIT BREAKER THREE POLE

DGMT



REFERENCES

Rating	No signal contact			No signal contact long trip time	Non polarised/polarised signal contact		Polarised signal contact
15 A	84 313 015						
20 A	84 313 020	84 313 036	84 313 061	84 313 820	84 313 320/620	84 313 316/613	84 313 621/631
25 A	84 313 025	84 313 037	84 313 062	84 313 825	84 313 325/625	84 313 317/617	84 313 622/632
30 A				84 313 830	84 313 330/630		
35 A	84 313 035	84 313 038	84 313 063	84 313 835	84 313 335/635	84 313 318/618	84 313 623/633
41 A	84 313 041			84 313 840			
50 A	84 313 050	84 313 058	84 313 066	84 313 850	84 313 350/650	84 313 319/619	84 313 624/634
60 A				84 313 860			

Mounting hardware

Threaded barrel	M12-0.75	<input checked="" type="checkbox"/>	<input checked="" type="checkbox"/>	<input checked="" type="checkbox"/>	<input checked="" type="checkbox"/>	<input checked="" type="checkbox"/>	<input checked="" type="checkbox"/>	<input checked="" type="checkbox"/>
	M12-100							
	7/16							
Terminal Screw	8-32 UNC		<input checked="" type="checkbox"/>	<input checked="" type="checkbox"/>	<input checked="" type="checkbox"/>	<input checked="" type="checkbox"/>	<input checked="" type="checkbox"/>	<input checked="" type="checkbox"/>
	M4	<input checked="" type="checkbox"/>						
Hole ø5.5 for Bus-Bar & 40° angle				<input checked="" type="checkbox"/>				<input checked="" type="checkbox"/>

Button

Green color				<input checked="" type="checkbox"/>	<input checked="" type="checkbox"/>	<input checked="" type="checkbox"/>	<input checked="" type="checkbox"/>
Black color	<input checked="" type="checkbox"/>	<input checked="" type="checkbox"/>	<input checked="" type="checkbox"/>				

Conformity standard

EN 2665	003	004					
EN 3662					004/005	004/005	006
10-60806 like				<input checked="" type="checkbox"/>			

Mass / MTBF / Vibration / Technical file

Mass without mounting hardware (g)		156		156		161	
Mass with mounting hardware (g)		165		165		170	
MTBF FH (Typical)		> 5 M		> 5 M		> 26 M	
MIL vibration condition Sinus/Random		A & C		A & C		A & C	
Technical File	-	SP4679	ASNE459	-	-	SP4340	SP4346

GENERAL CHARACTERISTICS

Electrical

	115/200 VAC (400 Hz)	115/200 VAC 60 Hz-230/400 VAC 50 Hz
Breaking current 1CO + 2OCO	2000 A ; 1500 A long trip	CONTACT CROUZET
Dielectric	1500 V	
Endurance (electric overloads)	5000 (with cos fi: 0.7)	
Insulation resistance	above 100 MΩ	
Working life (endurance) at 5xRC	50 cycles	
Auxiliary contact current	0.1..0.2 A	
Voltage drop compliance	EN2665/3662	

Mechanical

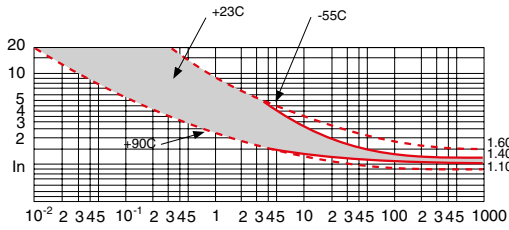
Operating force	20N<push<80N / 5N<pull<45N
Endurance (manual open/close)	no load : 5000 cycles on resistive load : 2500 cycles
Tightening torque	barrel nut: recommended: 4 ± 0.25 N.m maximum: 5.5 N.m terminal screw: recommended: 2.35 ± 0.15 N.m maximum : 2.5 N.m

Environmental

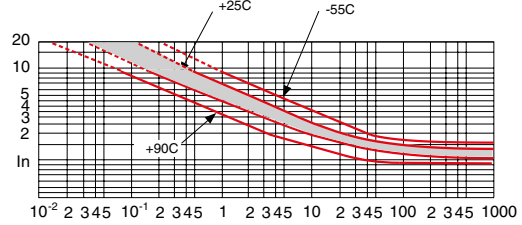
Salt spray	48h / 5% NaCl
Humidity: Test b	RTCA DO160 / 10 cycles
Operating temperature	-55°C +90°C
Acceleration	up to 40 g
Shock	50 g 3 halfsine 11 msec 6 directions
Vibration (sinusoidal)	10 g-PK from 70 to 20000 Hz (MIL STD202 method 204 D condition A with 90 % of RC)
Vibration (random at RC)	9.26 Grms (MIL STD202 method 214 A condition C with 90 % of RC)

CURVES

Standard trip time (EN compliant)

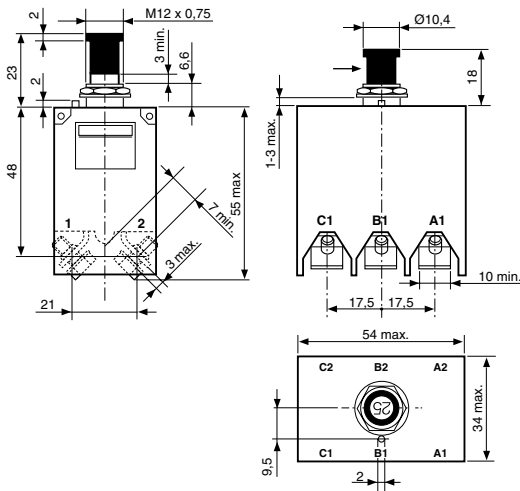


Long trip time

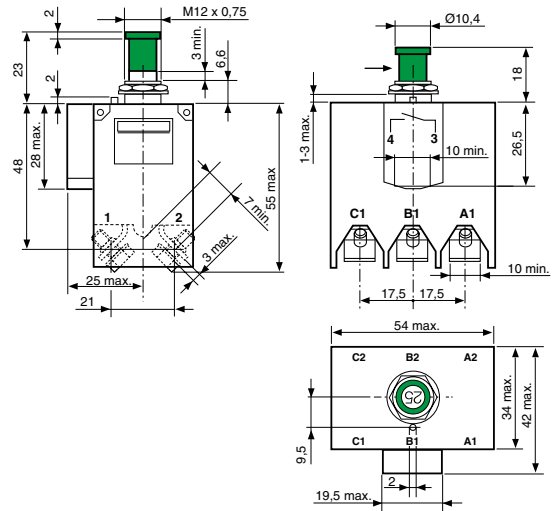


DIMENSIONS

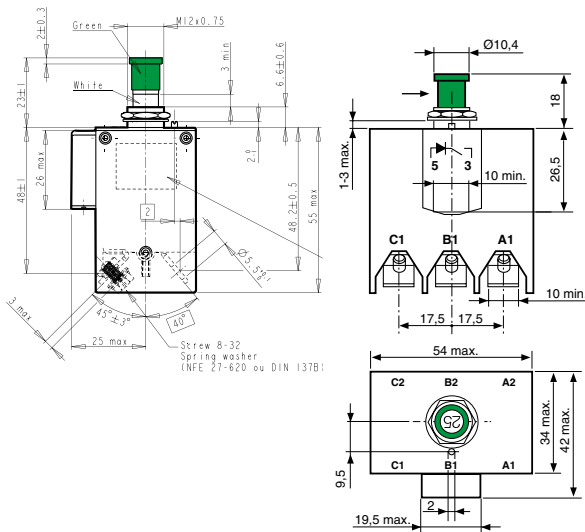
84 313 0



84 313 3 - 84 313 6



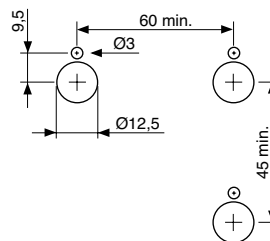
84 313 6 Bus-Bar EN 3662-006



PANEL CUTOUT RECOMMENDATION

› Thickness 1.6 mm → 3 mm

Versions 84 313 0 - 3 - 6



Versions Bus-Bar EN 3662-006

