



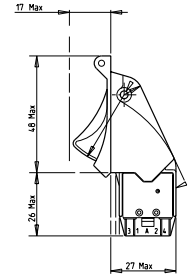
TRIGGER

		1 position						2 positions						
		non waterproof			waterproof			non waterproof			waterproof			
Color		black	red	grey	black	red	grey	black	red	grey	black	red	grey	
Electrical configuration		2 x NO/NC	2 x NO/NC	2 x NO/NC	1 x NO/NC	2 x NO/NC	2 x NO/NC	2 x NO/NC	2 x NO/NC	4x NO/NC	2 x NO/NC	2 x NO/NC	2 x NO/NC	2 x NO/NC
MOM		83574008	83574004	83574009	83574507	83574504	83574502	83574007	83574001	♦	83574010	83574514	83574555 83574505	83574501
MOM + FLAP GUARD		♦	83574006	♦	♦	83574503	♦	83574011	83574013	83574512	♦	♦	83574509 83574511 83574559	♦
MOM + LOCKING HOLE		♦	♦	♦	♦	♦	♦	83574012	♦	♦	♦	♦	♦	♦
MOM + FLAP+ LOCKING HOLE		♦	♦	♦	♦	♦	♦	♦	83574014	♦	♦	♦	♦	♦
Mechanical characteristics														
Operating force first position		12 N	30 N	12 N	16 N	20 N	16 N	12 N	12 N	12 N	12 N	20 N	20 N	20 N
Release force first position		2 N	2 N	2 N	4 N	4 N	4 N	2 N	2 N	2 N	2 N	4 N	4 N	4 N
Operating force second position		-	-	-	-	-	-	40 N	40 N	30 N	30 N	33 N	33 N	33 N
Total travel first position		14°	11°	14°	9°	14°	12°	12°	12°	12°	12°	12°	12°	12°
Total travel second position		-	-	-	-	-	-	22°	22°	22°	22°	22°	22°	22°
Mechanical life		100 000 cycles	100 000 cycles	100 000 cycles	100 000 cycles	100 000 cycles	100 000 cycles	100 000 cycles	100 000 cycles	100 000 cycles	100 000 cycles	100 000 cycles	100 000 cycles	100 000 cycles
Electrical characteristics														
Voltage		14 VDC to 30 VDC	14 VDC to 30 VDC	14 VDC to 30 VDC	14 VDC to 30 VDC	14 VDC to 30 VDC	14 VDC to 30 VDC	14 VDC to 30 VDC	14 VDC to 30 VDC	14 VDC to 30 VDC	14 VDC to 30 VDC	5 VDC to 32 VDC	14 VDC to 30 VDC	14 VDC to 30 VDC
Current (resistor)		6 A	6 A	6 A	6 A	6 A	6 A	6 A	6 A	2 A	6 A	20 mA	6 A	6 A
Current max @ 30VCC (self)		3 A	3 A	3 A	3 A	3 A	3 A	3 A	3 A	-	3 A	-	3 A	3 A
Electrical endurance		50 000 cycles	100 000 cycles	50 000 cycles	50 000 cycles	50 000 cycles	50 000 cycles	50 000 cycles	50 000 cycles	100 000 cycles	50 000 cycles	50 000 cycles	50 000 cycles	50 000 cycles
General characteristics														
Case		black polyamid 6.6	black polyamid 6.6	black polyamid 6.6	Thermoplastic inox	Thermoplastic inox	Thermoplastic inox	black polyamid 6.6	black polyamid 6.6	black polyamid 6.6	black polyamid 6.6	Thermoplastic inox	Thermoplastic inox	Thermoplastic inox
Button		Acetate resin	Acetate resin	Acetate resin	Acetate resin	Acetate resin	Acetate resin	Acetate resin	Acetate resin	Acetate resin	Acetate resin	Acetate resin	Acetate resin	Acetate resin
Terminal		solder lugs, copper nickel	solder lugs, copper nickel	solder lugs, copper nickel	solder lugs, copper nickel	solder lugs, copper nickel	solder lugs, copper nickel	solder lugs, copper nickel	solder lugs, copper nickel	solder pin	solder lugs, copper nickel	solder lugs, copper nickel	solder lugs, copper nickel	solder lugs, copper nickel
Contact		silver	silver	silver	silver	silver	silver	silver	silver		silver	silver	silver	silver
Operating temperature		-55°C → +85°C	-15°C → +60°C	-55°C → +85°C	-35°C → +75°C	-35°C → +75°C	-35°C → +75°C	-55°C → +85°C	-55°C → +85°C	-15°C → +60°C	-55°C → +85°C	-35°C → +75°C	-35°C → +75°C	-35°C → +75°C
Storage temperature		-55°C → +85°C	-55°C → +85°C	-55°C → +85°C	-55°C → +85°C	-55°C → +85°C	-55°C → +85°C	-55°C → +85°C	-55°C → +85°C	-55°C → +85°C	-55°C → +85°C	-55°C → +85°C	-55°C → +85°C	-55°C → +85°C
Weight		40g	22g	22g	25g	27g	25g	22g	22g	38g	22g	25g	27g	25g

Low level - Gold plated
MOM + FLAP+ LOCKING HOLE

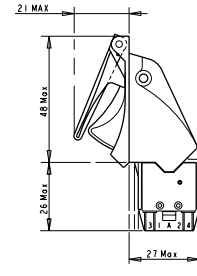
Dimensions

MOM



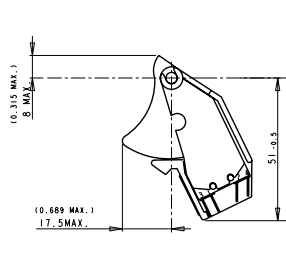
1 x NO/NC

MOM + FLAP GUARD

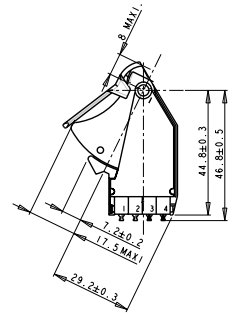


2 x NO/NC

MOM + LOCKING HOLE



4 x NO/NC



Electrical diagram

