

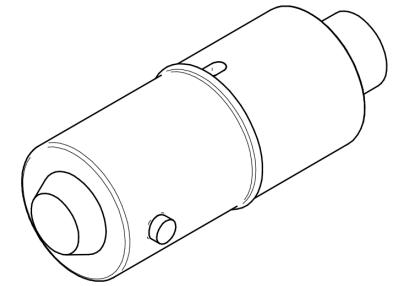


ML 5105 LED BULB REPLACEMENT

FEATURES

- > Wide illumination over large area
- > Water clear lens
- > Flat-topped LED
- > High intensity LED
- > Multiple LED colors available
- > Voltage options (*see chart*)
- > Voltage Range: 8-48 Vac/dc Bi-Polar
- > Direct replacement for standard bulb fitting
- > Suitable for AC or DC with wrong polarity installation prevention
- > Internal resistor
- > No color filter required

Colors	Color Code
Red	R
Yellow	Y
Green	G
Blue	B
Warm White	W
White	WH



ML 5105 Replacement LEDs are rugged durable LED indicators that are a direct replacement for standard bulb fittings. These LEDs have a water clear lens and flat tops for a large illumination area. The LEDs are a direct replacement for standard polarity and are manufactured with internal resistor protection. They are available in a large variety of colors and voltage ranges from 8-48 Vac/dc bi-polar. Warm white can be used behind a colored lens as a true replacement for a filament lamp.

PROPERTIES

Connection	T3-1/4 (BA9s) Bayonet Cap
Weight	1.9 grams
Bulb Size	T1-3/4
Operational Temp.	-40°C to 80°C
Blue/White/Warm White	-30°C to 85°C
Storage Temp.	-40°C to 100°C

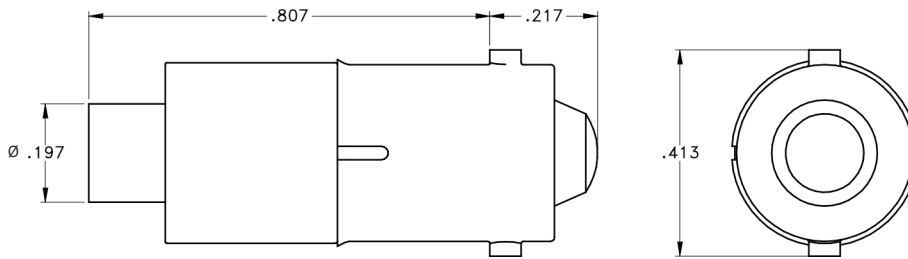
ELECTRO-OPTICAL SPECIFICATIONS

CHARACTERISTICS		ML5105-()-()						
	(Vac/dc) Typical	(mA) Typical	Red	Yellow	Green	Blue	Warm White	White
Typical Luminous Intensity (mcd)	8 – 48	10	236	200	1360	250	400	750
Typical Wavelength (λp)	(8 – 48)	10	619	595	520	465	SEE BELOW	SEE BELOW
TYPICAL EMISSION WARM WHITE								
	X	0.4255	0.4390	0.4970	0.4770			
	Y	0.4000	0.4310	0.4466	0.4137			
TYPICAL EMISSION WHITE								
	X	0.296	0.287	0.330	0.330			
	Y	0.276	0.295	0.339	0.318			
Max Power Dissipation	625 mW							

ELECTRICAL SPECIFICATIONS

Voltage (Vdc)
8 – 48

DIMENSIONS (INCHES)



ML 5105 ORDERING INFORMATION

FAMILY SERIES – COLOR – VOLTAGE ML5105-()-()		
Model No.	Color	Voltage
ML5105-R-8/48	Red	8/48
ML5105-Y-8/48	Yellow	8/48
ML5105-G-8/48	Green	8/48
ML5105-B-8/48	Blue	8/48
ML5105-W-8/48	Warm White	8/48
ML5105-WH-8/48	White	8/48

NOTE:

LABELING INFORMATION	
Laser etch case	ML5105
Laser etch date code	YYWW
Label ESD BAG:	Example:
Cage code	10236
Model number	ML5105-R-8/48
Date code (YYWW)	2030

ML 5105 LED BULB REPLACEMENT

© 2021 L3Harris Technologies, Inc. | 07/2021

Refer to your Trade Compliance Lead or Empowered Official for exact disclaimer language.

L3Harris Technologies is an agile global aerospace and defense technology innovator, delivering end-to-end solutions that meet customers' mission-critical needs. The company provides advanced defense and commercial technologies across air, land, sea, space and cyber domains.



1025 W. NASA Boulevard
Melbourne, FL 32919
t 513 943 2000 | f 513 943 2050
info@L3Harris.com