

# LIMIT SWITCHES

## Series - H11

## Environmentally Sealed Switches

| FEATURES | SPECIFICATIONS | CURRENT RATINGS |  |  |  |  |
|----------|----------------|-----------------|--|--|--|--|
|----------|----------------|-----------------|--|--|--|--|

- Current ratings up to 7 amperes
- Two and four pole configurations
- Wire leads with strain relief
- Connector option available
- Single hole mounting
- Ice scraping capability
- Simultaneous contact circuitry
- Reliable lifetime operation
- Durable construction for harsh environment applications
- Wiring schematic located on switch body
- Customized to fit your exact application

- MIL-PRF-8805 approved
- Enclosure per MIL-PRF-8805 Design 4 (Resilient)
- Wire leads per MIL-W-22759/7
- Operating temperature range: -65°F to +185°F (-55°C to + 85°C)
- Electrical life: 25,000 cycles at rated load
- Mechanical life: 25,000 cycles
- All metal parts treated for corrosion resistance

| Altitude     | Amperes - 28VDC |           |       |           |
|--------------|-----------------|-----------|-------|-----------|
|              | Inrush          | Resistive | Motor | Inductive |
| Sea Level    | 24              | 7         | 4     | 4         |
| 50,000 Feet  | 24              | 7         | 4     | 2.5       |
| 100,000 Feet | 24              | 7         | 4     | 1.5       |



Cat. No. H11-375



Cat. No. H11-330



Cat. No. H11-395



Cat. No. H11-390



Cat. No. H11-335



Cat. No. H11-331

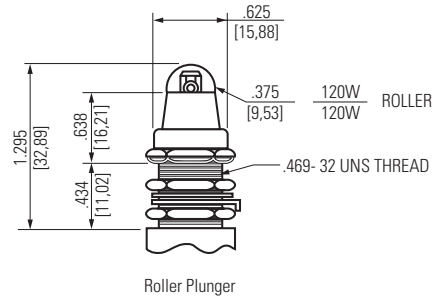
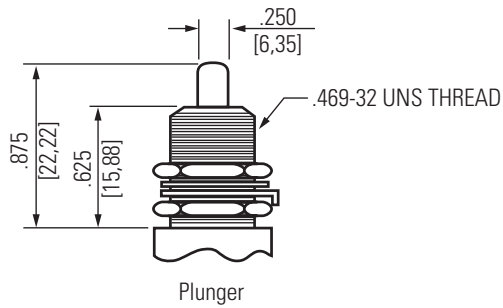
**SELECTION TABLE - All switches shown have 6-foot length lead wire per MIL-W-22759/7 marked per MIL-W-5088.**

| Poles and Throw               | Characteristics |           |              |               |               |               | MS Part Number      | Catalog Number | Weight (oz.) | Bushing Thread Size | Housing Dimensions Inches Standard Base |                   |
|-------------------------------|-----------------|-----------|--------------|---------------|---------------|---------------|---------------------|----------------|--------------|---------------------|---|-------------------|
|                               | Actuator        | Op. Force | Return Force | Pre-Travel    | Over-Travel   | Diff. Travel  |                     |                |              |                     | Height "A" Dim.                         | Diameter "B" Dim. |
| <b>STANDARD SWITCH SERIES</b> |                 |           |              |               |               |               |                     |                |              |                     |   |                   |
| 2 PDT                         | Plunger         | 6-12 lbs. | 4 lbs. min.  | .040 in. max. | .250 in. min. | .020 in. max. | MS21321-1 (8805/39) | H11-335        | 7.2          | .625-24             | .980                                    | .720              |
| 4 PDT                         | Plunger         | 6-12 lbs. | 4 lbs. min.  | .040 in. max. | .250 in. min. | .020 in. max. | MS21321-2 (8805/39) | H11-395        | 12.5         | .625-24             | 1.20                                    | 1.03              |
| 2 PDT                         | Plunger         | 6-12 lbs. | 4 lbs. min.  | .070 in. min. | .250 in. max. | .020 in. max. | MS24331-1 (8805/40) | H11-375        | 7.3          | .625-24             | .980                                    | 1.015             |
| 2 PDT                         | Plunger         | 6-12 lbs. | 4 lbs. min.  | .040 in. max. | .125 in. min. | .020 in. max. | MS27240-1 (8805/43) | H11-330        | 8            | .469-32             | 1.0                                     | .720              |
| 4 PDT                         | Plunger         | 6-12 lbs. | 4 lbs. min.  | .040 in. max. | .125 in. min. | .020 in. max. | MS27240-2 (8805/43) | H11-390        | 13.6         | .469-32             | 1.20                                    | 1.03              |
| 2 PDT                         | Roller Plunger  | 6-12 lbs. | 4 lbs. min.  | .040 in. min. | .125 in. min. | .020 in. max. | MS27240-3 (8805/43) | H11-331        | 8            | .32                 | 1.0                                     | .720              |
| 4 PDT                         | Roller Plunger  | 6-12 lbs. | 4 lbs. min.  | .040 in. max. | .125 in. min. | .020 in. max. | MS27240-4 (8805/43) | H11-391        | 13.6         | .469-32             | 1.20                                    | 1.03              |

# Series - H11

# LIMIT SWITCHES Environmentally Sealed Switches

## STANDARD ACTUATOR

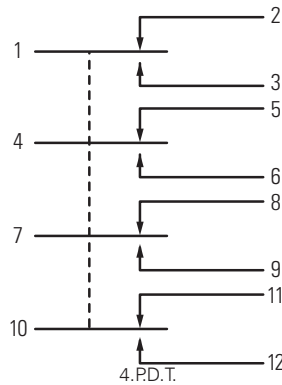
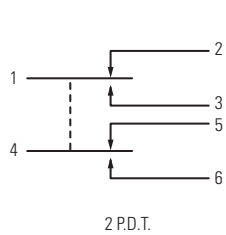


E-2-1/PART 2.AI

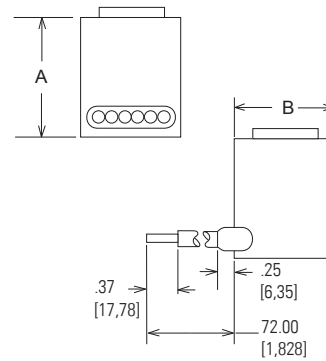
**Plunger Operated** - As with all push-on units, this actuator has an ice scraper for clearing the plunger of ice and debris with each operation.

**Roller Plunger** - For cam and slide actuation. Roller adjusts radially in 45° increments. Cam differential should not exceed 0.125 in., and cam slope should not exceed 30°.

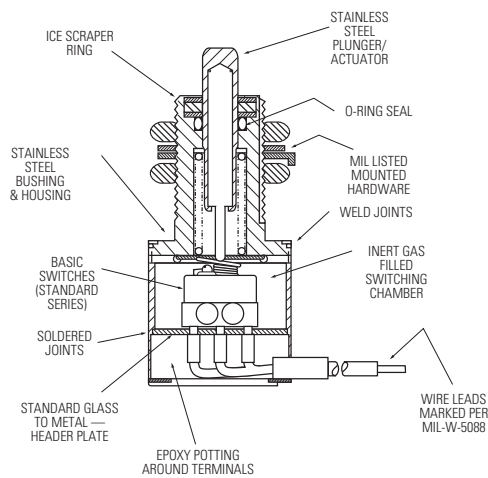
## SCHEMATIC



## STANDARD BASE



## BASIC CONSTRUCTION



**STANDARD**  
0.00 = inches  
[0,0] = mm

Dimensions for reference only.