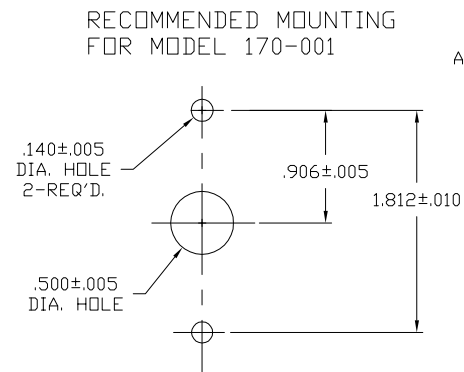
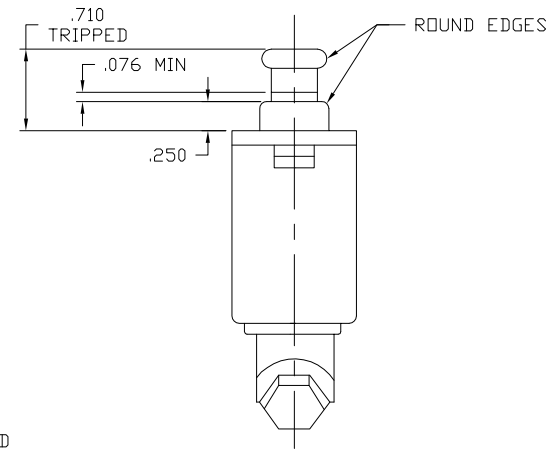
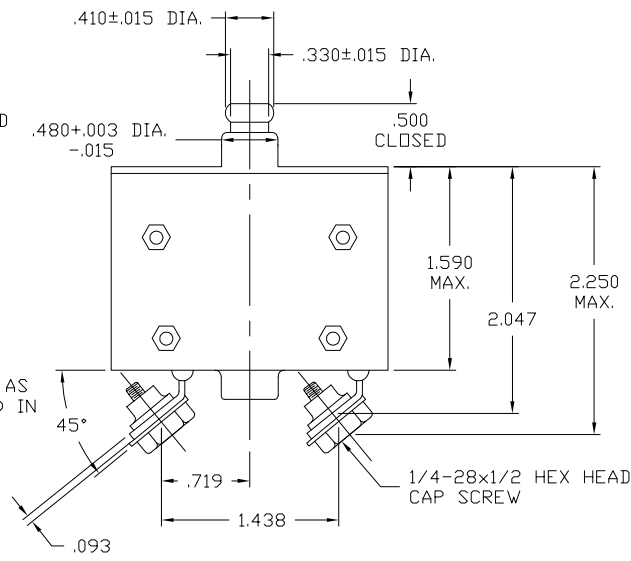
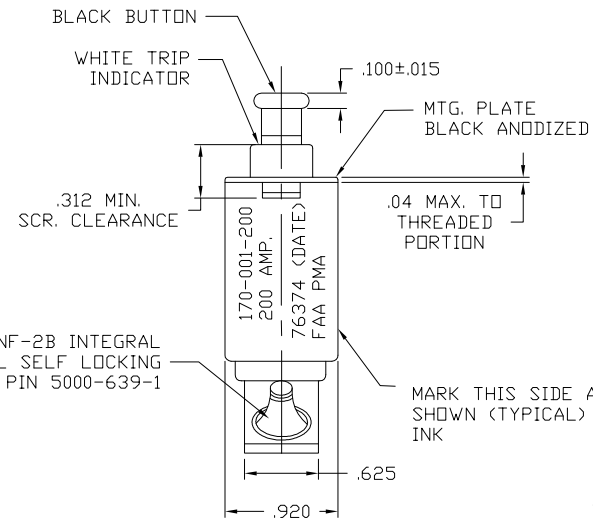
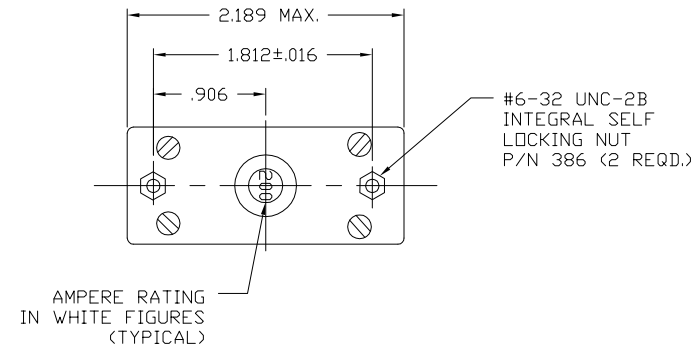


NOTES:

- SEE MPS,50-081 FOR FUNCTIONAL TEST REQUIREMENTS.
- SPECIFIC P/N'S ON THIS DRAWING HAVE FAA PARTS MANUFACTURER APPROVAL (FAA-PMA) SEE 50-27296 FOR MAKE AND MODEL INSTALLATION ELIGIBILITY AND DRAWING CHANGE APPROVAL REQUIREMENTS.
- MARKING PER FAR A5.15 INCLUDING: " FAA-PMA", PART NUMBER, AND "LABINAL". INSTALLATION ELIGIBILITY PROVIDED ON ATTACHED TAG.

These commodities, technology, or software were exported from the United States in accordance with the Export Administration Regulations. Diversion contrary to U.S. law is prohibited. 9E991-DUAL USE



170-001-200	FAA PMA	200
170-001-180	-	180
170-001-160	-	160
170-001-150	FAA PMA	150
170-001-140	-	140
170-001-125	-	125
LABINAL P/N	FAA PMA APPROVAL	AMP. RATING

REV	CURRENT CHANGE STATUS	CAD DRAWING NO MANUAL CHGS	PROJECT NO	BASIC SPECS.SUMMARY	DESCRIPTION: CIRCUIT BREAKER,TRIP-FREE,PUSH-PULL,TYPE I.
U	6-4-14 TGS ECO# 14-91708		---	---	DO NOT SCALE DRAWING. WORK ACCORDING TO DIMENSIONS. REQUIREMENTS OF 50-2500 SHALL APPLY UNLESS OTHERWISE SPECIFIED. DIMENSIONS BEFORE COATING ARE SPECIFIED-ALLOWANCE HAVE BEEN MADE FOR COATING EXCEPT ON THREADS.
DESCR:	REMOVED "EATON" ADDED "LABINAL"		---		RAW MATERIAL: ---
			---		DO NOT SCALE DRAWING. WORK ACCORDING TO DIMENSIONS. REQUIREMENTS OF 50-2500 SHALL APPLY UNLESS OTHERWISE SPECIFIED. DIMENSIONS BEFORE COATING ARE SPECIFIED-ALLOWANCE HAVE BEEN MADE FOR COATING EXCEPT ON THREADS.
			---		PART NO. --- SPEC. ---
			---		DR: JOE WHITE 8-7-69
			---		THIRD ANGLE PROJECTION
			---		SIZE GRADE
			---		170-001
			---		SHEET 1 OF 1