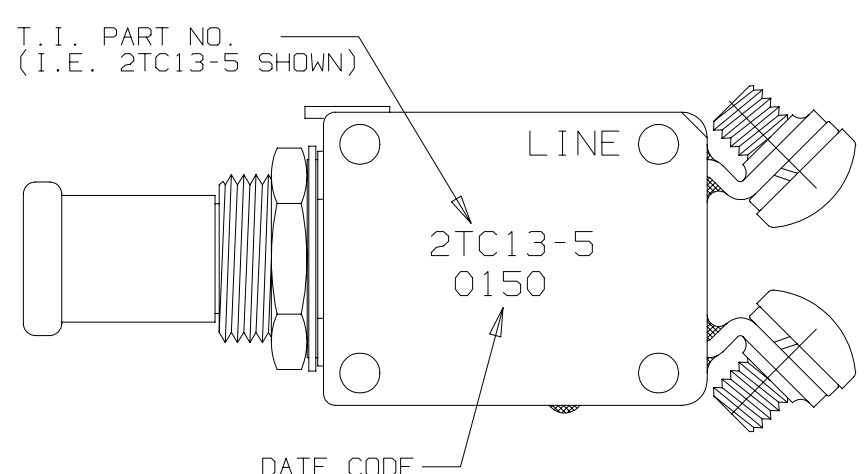
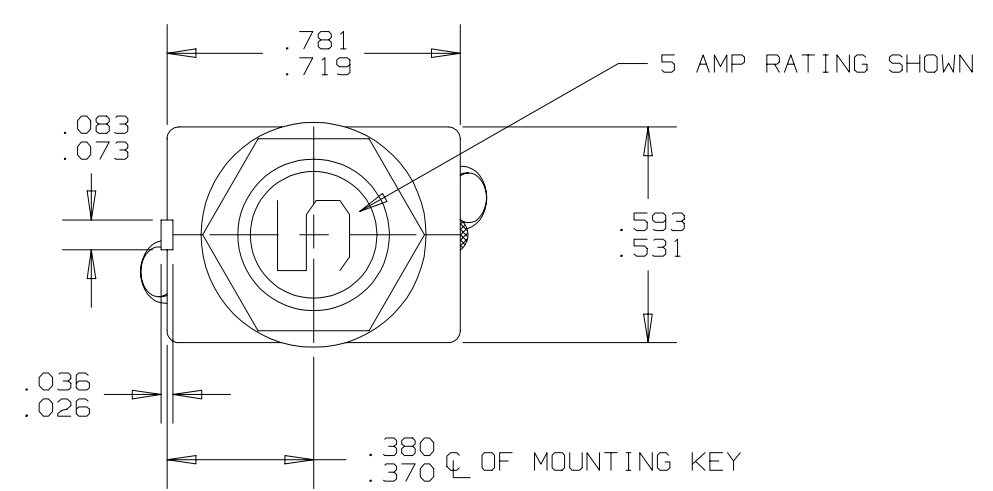


Property of
Sensata Technologies



MARKING

REVISIONS						
ZONE	LTR	2TC13	DESCRIPTION	PROJ. 1041	DATE	APPROVED
	K	SEE ECN		ECN0017504 PAF	8-19-04	D.A.

NOTES:

- EPOXY SURFACES ARE NON-DIMENSIONED. ENVELOPE DRAWING DIMENSIONS DO NOT APPLY TO THESE PROJECTED EPOXY SURFACES.
- TERMINAL AND MOUNTING HARDWARE MAY BE PACKAGED RATHER THAN INSTALLED.
- COUNTRY OF ORIGIN IS SHOWN FOR ILLUSTRATION PURPOSES ONLY. COUNTRY OF ORIGIN TO BE IDENTIFIED AS REQUIRED.
- DATE CODE PER 10588-285.
- MARK IN APPROXIMATE POSITION SHOWN IN BLACK INK PER 12506-70.

PERFORMANCE CHARACTERISTICS

DETAIL PERFORMANCE PER MIL-C-5809

OVERLOAD CYCLING	-----	100 CYCLES AT 200% RATING
VIBRATION	-----	10 G'S MINIMUM 50-500 CPS
MECHANICAL SHOCK	-----	50 G'S
ACCELERATION	-----	10 G'S
SAND AND DUST	-----	12 HOURS
CORROSION	-----	SALT SPRAY 50 HOURS
HUMIDITY	-----	10 DAYS
EXPLOSION PROOF	-----	WHILE INTERRUPTING RUPTURE CURRENTS

ENDURANCE:	120 VAC	400 CPS INDUCTIVE	2500 CYCLES
	30 VDC	400 CPS RESISTIVE	5000 CYCLES
		INDUCTIVE	2500 CYCLES
		RESISTIVE	5000 CYCLES
		NO LOAD	10000 CYCLES

CALIBRATION:	1 AMP THRU 20 AMP					
		MIN. ULT. TRIP	MAX. ULT. TRIP	200%	500%	1000%
+25°C. +77°F		115% RATING	138% RATING	5-20 SEC.	.5-2.0 SEC.	.12-.53 SEC.
-54°C. -65°F		115% RATING	165% RATING	7-40 SEC.	.6-3.0 SEC.	.16-.8 SEC.
+121°C. +250°F		85% RATING	145% RATING	3-13 SEC.	.33-1.1 SEC.	.07-.3 SEC.

RUPTURE:	1 THRU 15 AMP	120 VAC, 400 CPS	2500 AMPS
	1 THRU 20 AMP	28 VDC	6000 AMPS
	20 AMP	120 VAC, 400 CPS	2000 AMPS

MAXIMUM OPERATING FORCES

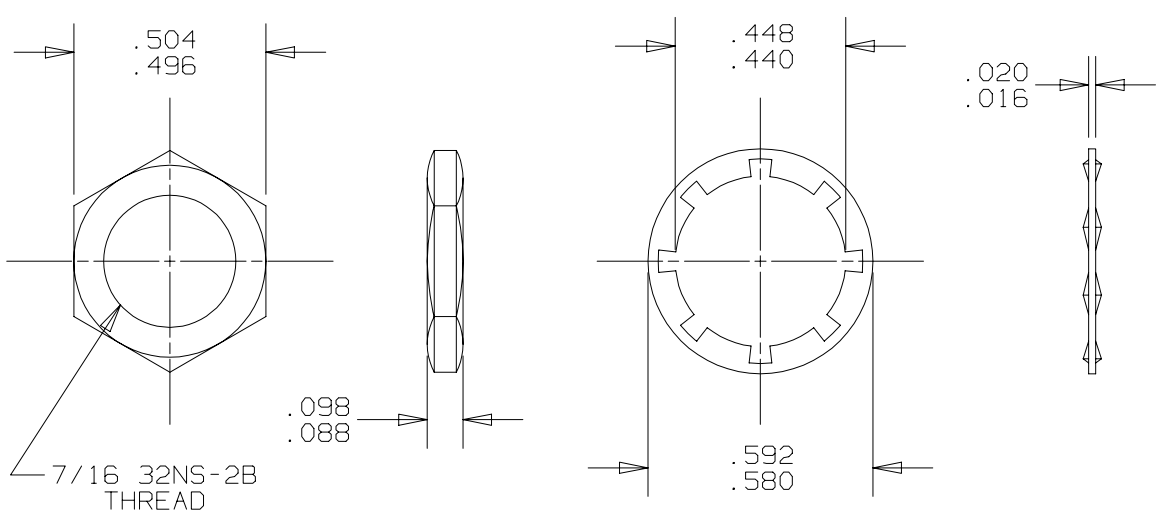
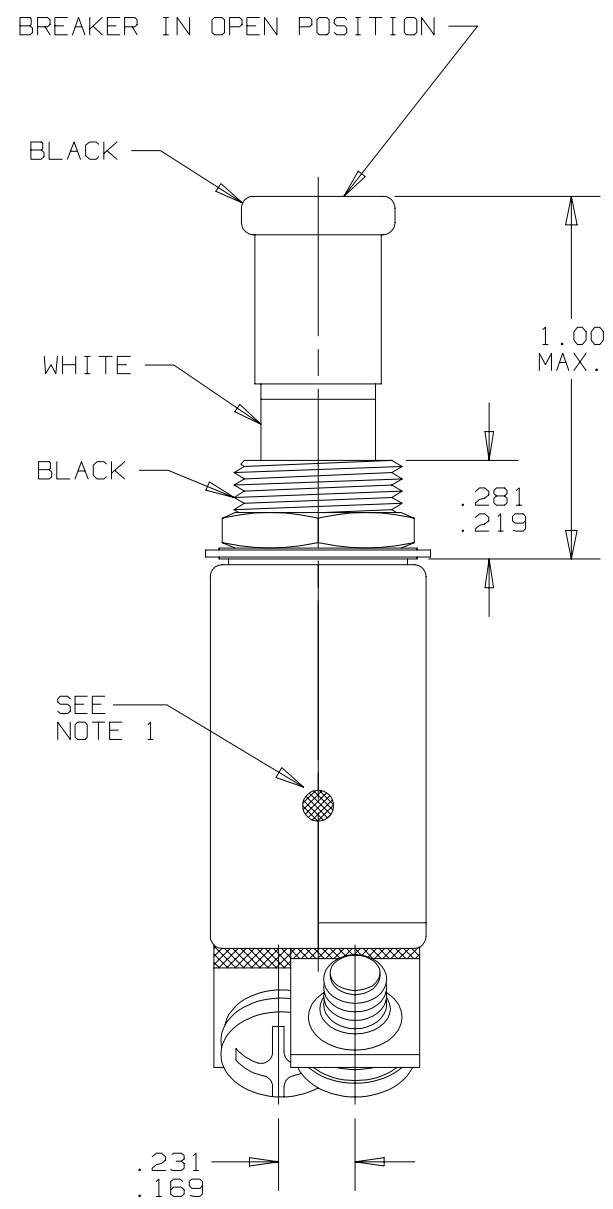
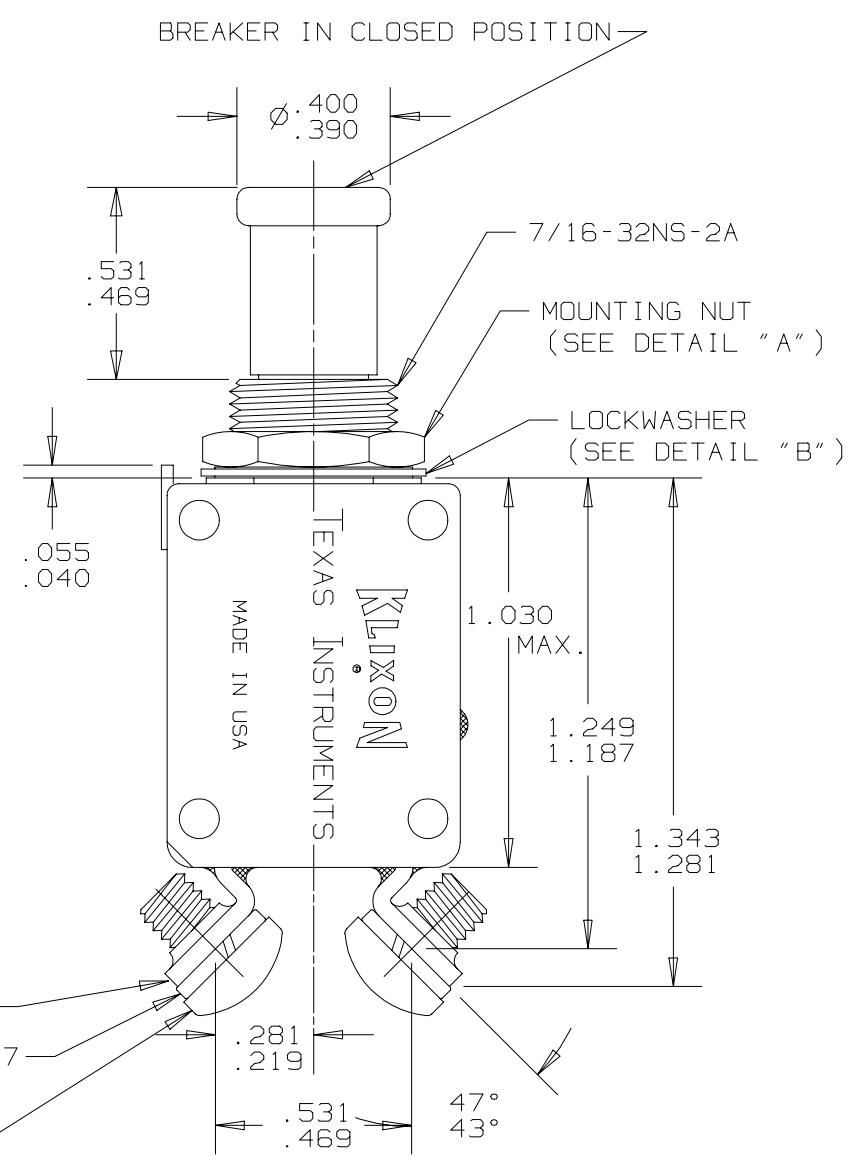
PULL OUT	-----	5 LBS. MAX.
RESET	-----	5 LBS. MAX.

OPERATING ALTITUDE: 70,000 FT.

WEIGHT: 25.0 GRAMS MAX.

VOLTAGE DROP:

1 AMP	-----	1.10 VOLTS MAX.
2 AMP	-----	0.70 VOLTS MAX.
2.5 AMP	-----	0.50 VOLTS MAX.
3 AMP	-----	0.40 VOLTS MAX.
5 AMP	-----	0.35 VOLTS MAX.
7.5 AMP	-----	0.30 VOLTS MAX.
10 AMP	-----	0.28 VOLTS MAX.
15 AMP	-----	0.25 VOLTS MAX.
20 AMP	-----	0.25 VOLTS MAX.



THIS IS A CAD DRAWING. THE GEOMETRY IN THE ASSOCIATED CAD COMPUTER FILE IS DIMENSIONALLY ACCURATE. WHEN DRAWING IS BEING REVISED, THE GEOMETRY MUST BE UPDATED IN ALL VIEWS AND ON ALL SHEETS.

UNLESS OTHERWISE SPECIFIED DIMENSIONS ARE IN INCHES	DRAWN D. LAVERTY	DATE 3-20-74	P2	Q3	P18
TOLERANCE ON FRACTIONS DECIMALS ANGLES	ENGINEER D. EISNOR	3-24-74	 TEXAS INSTRUMENTS ATTLEBORO, MASSACHUSETTS 02703 KLIXON CONTROL PRODUCTS DIVISION		
MATERIAL	APPROVED N/A		TITLE PART NO. 2TC13 AMBIENT COMPENSATED, HIGH TEMP. CIRCUIT BREAKER PUSH-PULL, TRIP FREE ENVELOPE DRAWING		
	APPROVED D. EISNOR	3-24-74	SIZE	CODE IDENT NO.	
	SIGNATURES ON FILE. REFER TO ELECTRONIC CHANGE NOTICE.		C	82647	2TC13
			SCALE: 4X	SHEET 1 OF 1	