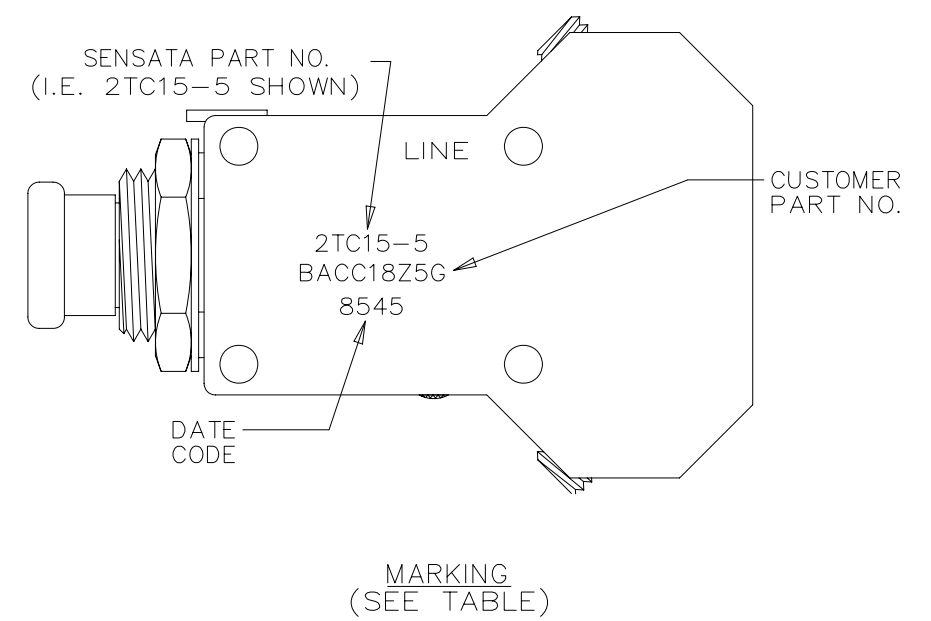
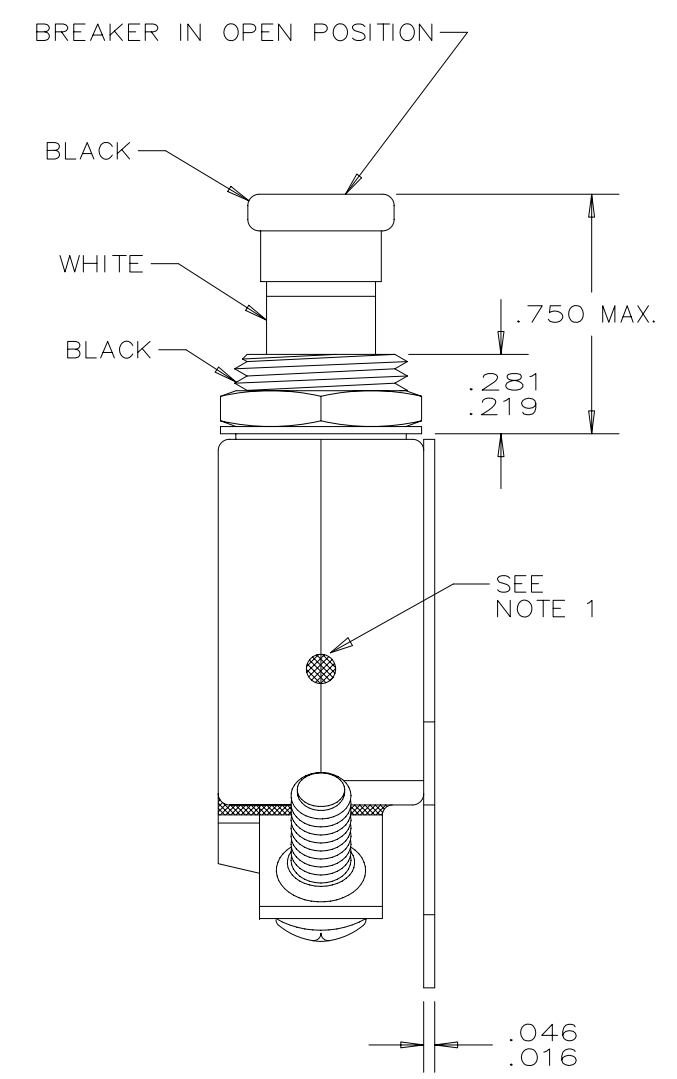
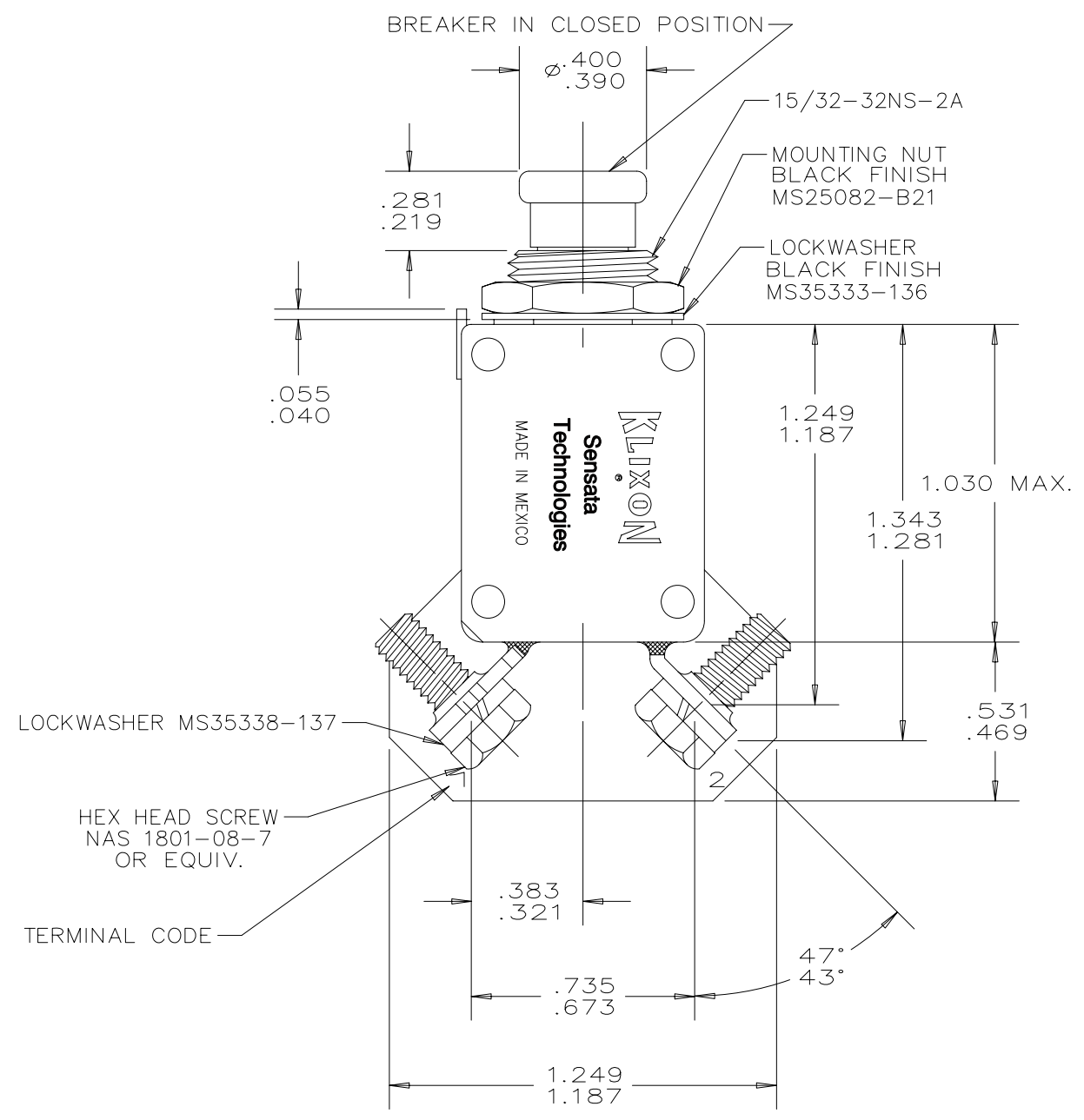
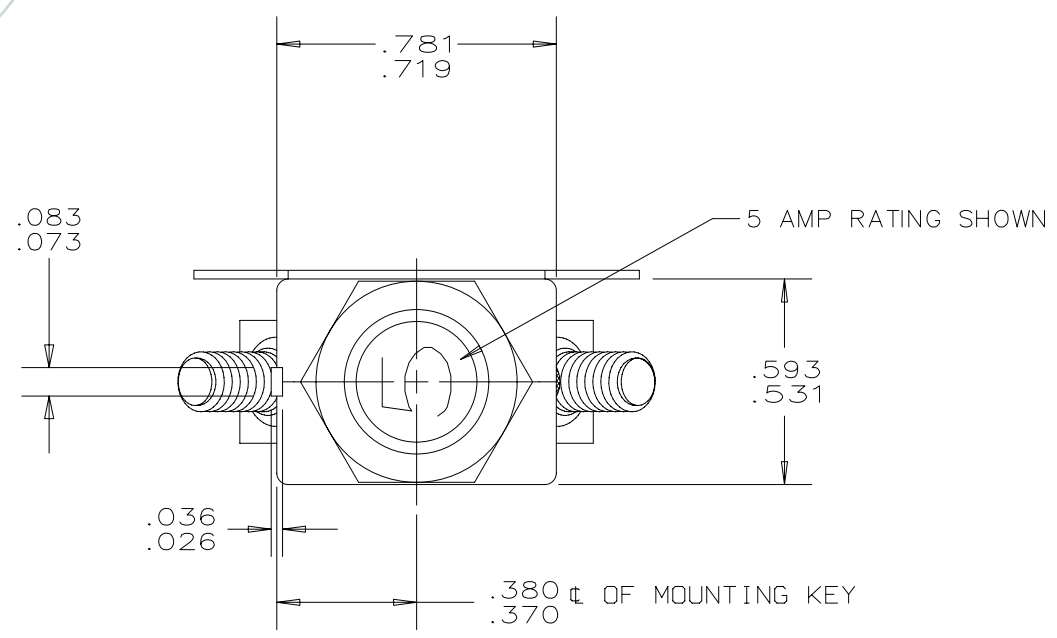


Property of
Sensata Technologies

ZONE	REV.	REVISION DESCRIPTION	ECN NO.	DATE
A4 A3	AG	REMOVED PMA APPROVED MARKING ON PART & COLUMN IN TABLE; GML	ECO-094918	18-DEC-2013



2TC15-20	BACC18Z20G
2TC15-15	BACC18Z15G
2TC15-10	BACC18Z10G
2TC15-7 1/2	BACC18Z7G
2TC15-5	BACC18Z5G
2TC15-3	BACC18Z3G
2TC15-2 1/2	BACC18Z2G
2TC15-2	N/A
2TC15-1	BACC18Z1G
SENSATA PART NO.	CUSTOMER PART NO.

PERFORMANCE CHARACTERISTICS

DETAIL PERFORMANCE PER MIL-C-5809G

OVERLOAD CYCLING	-----	100 CYCLES AT 200% RATING
VIBRATION	-----	10 G'S MINIMUM 50-500 C.P.S. (SEE ADDITIONAL VIB. SPECS. BELOW)
MECHANICAL SHOCK	-----	50 G'S
ACCELERATION	-----	10 G'S
SAND AND DUST	-----	12 HOURS
CORROSION	-----	SALT SPRAY 50 HOURS
HUMIDITY	-----	10 DAYS
EXPLOSION PROOF	-----	WHILE INTERRUPTING RUPTURE CURRENTS

ENDURANCE:

120 VAC	400 CPS INDUCTIVE	2500 CYCLES
30 VDC	400 CPS RESISTIVE	5000 CYCLES
	INDUCTIVE	2500 CYCLES
	RESISTIVE	5000 CYCLES
	NO LOAD	10000 CYCLES

CALIBRATION: 1 AMP THRU 20 AMP

	MIN. ULT. TRIP	MAX. ULT. TRIP	200%	500%	1000%
+25°C, +77°F	115% RATING	138% RATING	5-20 SEC.	.5-2.0 SEC.	.12-.53 SEC.
-54°C, -65°F	115% RATING	165% RATING	7-35 SEC.	.6-3.0 SEC.	.15-.70 SEC.
+121°C, +250°F	85% RATING	145% RATING	2-13 SEC.	.25-1.0 SEC.	.06-.25 SEC.

RUPTURE:

1 THRU 15 AMP	120 VAC, 400 CPS	2500 AMPS
1 THRU 20 AMP	28 VDC	6000 AMPS
20 AMP	120 VAC, 400 CPS	2000 AMPS

MAXIMUM OPERATING FORCES

PULL OUT	-----	1.5 - 5.0 LBS
RESET	-----	1.0 - 5.0 LBS

OPERATING ALTITUDE: 70,000 M (21,000 M)

WEIGHT: 27.0 GRAMS MAX.

VOLTAGE DROP:

1 AMP	-----	1.10 VOLTS MAX.
2 AMP	-----	0.70 VOLTS MAX.
2.5 AMP	-----	0.50 VOLTS MAX.
3 AMP	-----	0.40 VOLTS MAX.
5 AMP	-----	0.35 VOLTS MAX.
7.5 AMP	-----	0.30 VOLTS MAX.
10 AMP	-----	0.28 VOLTS MAX.
15 AMP	-----	0.25 VOLTS MAX.
20 AMP	-----	0.25 VOLTS MAX.

VIBRATION RANDOM: PER BPS-C-144
9dB/OCT RISE, 5-15 HZ; PSD OF 0.2(G²/HZ) FROM 15 TO 100 HZ;
9dB/OCT FALL 100 TO 2000 HZ

- NOTES:
- EPOXY SURFACES ARE NON-DIMENSIONED, ENVELOPE DRAWING DIMENSIONS DO NOT APPLY TO THESE PROJECTED EPOXY SURFACES.
 - TERMINAL AND MOUNTING HARDWARE MAY BE PACKAGED RATHER THAN INSTALLED
 - COUNTRY OF ORIGIN IS SHOWN FOR ILLUSTRATION PURPOSES ONLY, COUNTRY OF ORIGIN TO BE IDENTIFIED AS REQUIRED.
 - DATE CODE PER 10588-285.
 - MARK IN APPROXIMATE POSITION SHOWN IN BLACK INK PER 12506-70.

FOR REFERENCE ONLY, CHECK LATEST REVISION BEFORE USE. PARTS MADE TO THIS PRINT MUST CONFORM TO E9898 REV. E		529 PLEASANT STREET P.O. BOX 2964 ATTLEBORO, MA 02703	
DRAWN J.D. MAYALL DATE 22-SEP-1992	ENGINEER D.L. EISNOR DATE 28-FEB-1968	TITLE PART NO. 2TC15 AMBIENT COMPENSATED HIGH TEMP. CIRCUIT BREAKER PUSH-PULL, TRIP FREE ENVELOPE DRAWING	
APPROVED	APPROVED	SIZE C	DWG NO. 2TC15
DATE	DATE	REV. AG	
DO NOT SCALE DRAWING	THIRD ANGLE PROJECTION	SCALE AUTOCAD	SHEET 1 OF 1
DATE	DEVICE:	PROJECT: 1	