

Property of
Sensata Technologies

ZONE	REV.	REVISION DESCRIPTION	ECN NO.	DATE
A4 B3	AA	REMOVED PMA APPROVED MARKING ON PART & COLUMN IN TABLE; GML	ECO-094918	18-DEC-2013

PERFORMANCE CHARACTERISTICS

DETAIL PERFORMANCE PER MIL-C-5809G

OVERLOAD CYCLING ----- 100 CYCLES AT 200% RATING
 VIBRATION ----- 10 G'S MINIMUM 50-500 HZ
 (SEE ADDITIONAL VIBE SPECS. BELOW)

MECHANICAL SHOCK ----- 50 G'S
 ACCELERATION ----- 10 G'S
 SAND AND DUST ----- 12 HOURS
 CORROSION ----- SALT SPRAY 50 HOURS
 HUMIDITY ----- 10 DAYS
 EXPLOSION PROOF ----- WHILE INTERRUPTING RUPTURE CURRENTS

ENDURANCE:

	120 VAC	400 HZ INDUCTIVE	2500 CYCLES
30 VDC		INDUCTIVE RESISTIVE NO LOAD	2500 CYCLES
MECHANICAL			5000 CYCLES
			10000 CYCLES

CALIBRATION: 2.5, 3, 5, 7.5, 10 AND 15 AMP

	MIN. ULT. TRIP	MAX. ULT. TRIP	200%	500%	1000%
+25°C, +77°F	115% RATING	138% RATING	4-20 SEC.	.4-2.0 SEC.	.10-.53 SEC.
-54°C, -65°F	115% RATING	165% RATING	7-35 SEC.	.6-3.0 SEC.	.15-.70 SEC.
+121°C, +250°F	85% RATING	145% RATING	2-13 SEC.	.25-1.0 SEC.	.06-.25 SEC.

RUPTURE:

2.5, 3, 5, 7.5, 10 AMP	120 VAC, 400 HZ	2800 AMPS
15 AMP	120 VAC, 400 HZ	2000 AMPS
2.5, 3, 5, 7.5, 10, 15 AMP	28 VDC,	3400 AMPS

MAXIMUM OPERATING FORCES

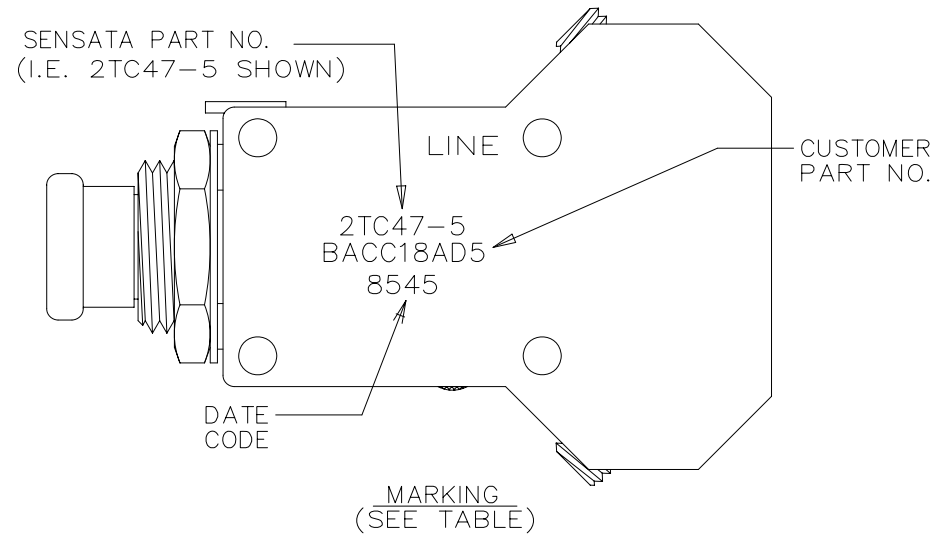
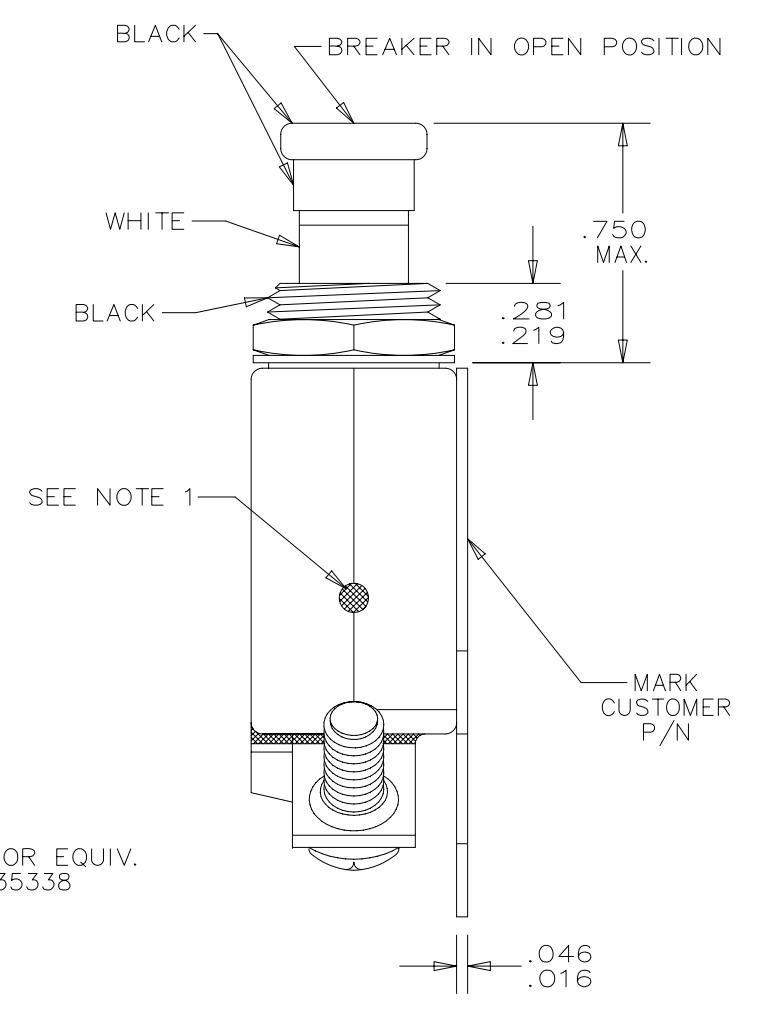
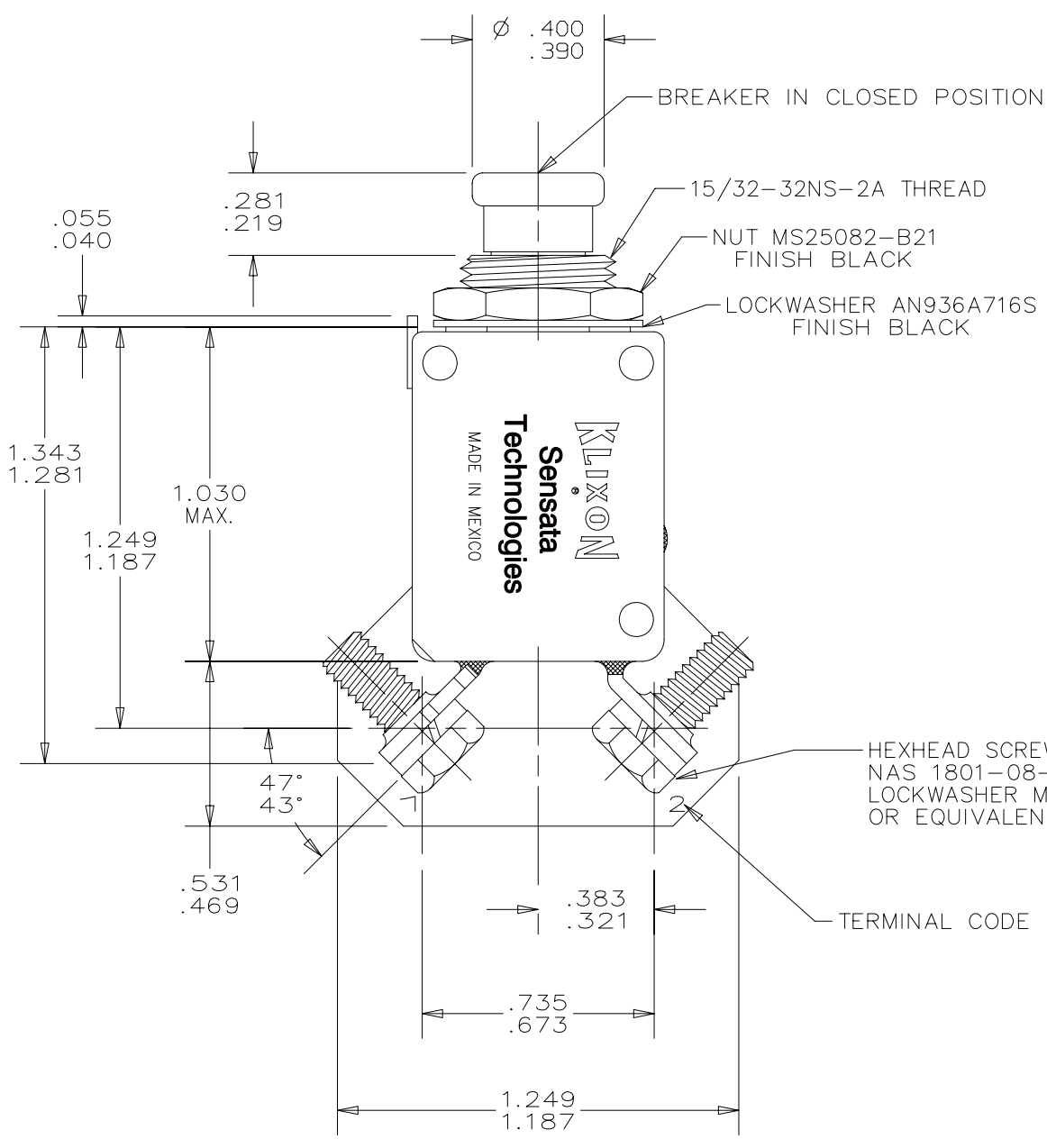
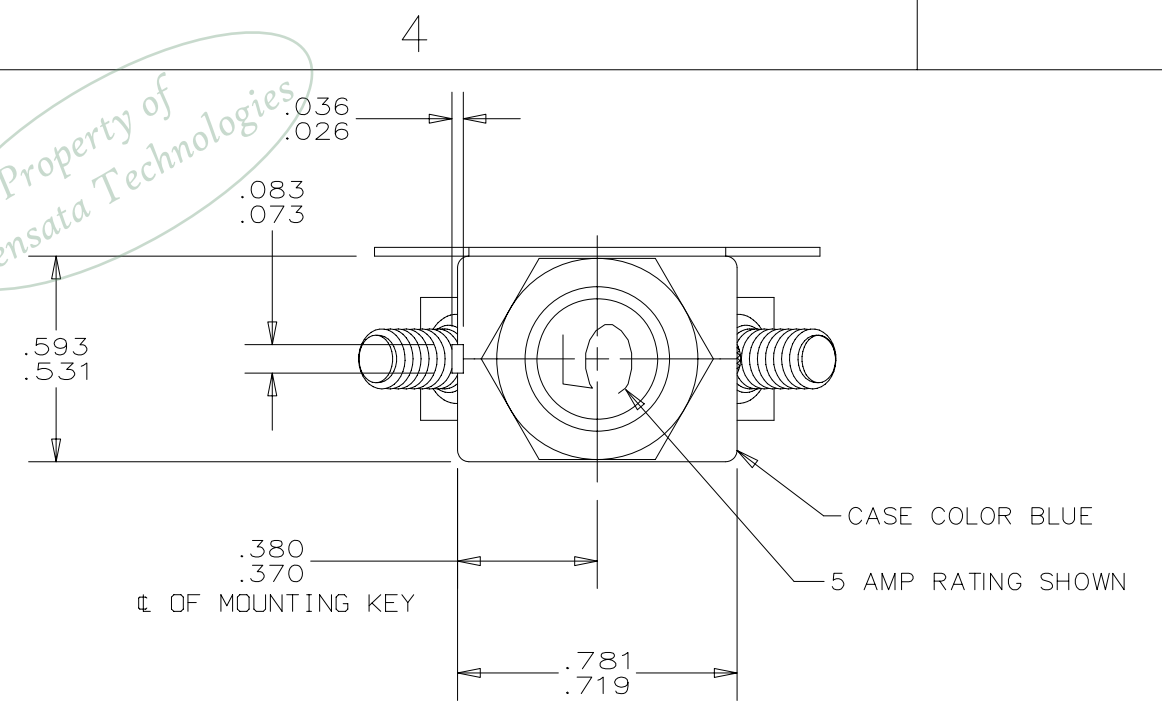
PULL OUT ----- 5 LBS MAX. ----- 1.5 LBS MIN.
 RESET ----- 5 LBS MAX. ----- 1.0 LBS MIN.

OPERATING ALTITUDE: 70,000 FT
 WEIGHT: 27.0 GRAMS MAX.

VOLTAGE DROP:

2.5 AMP	-----	0.50 VOLTS MAX.
3 AMP	-----	0.40 VOLTS MAX.
5 AMP	-----	0.35 VOLTS MAX.
7.5 AMP	-----	0.30 VOLTS MAX.
10 AMP	-----	0.28 VOLTS MAX.
15 AMP	-----	0.25 VOLTS MAX.

VIBRATION RANDOM:
 9dB/OCT RISE, 5-15 HZ; PSD OF 0.2(G²/HZ) FROM 15 TO 100 HZ;
 9dB/OCT FALL 100 TO 2000 HZ



- NOTES:
- EPOXY SURFACES ARE NON-DIMENSIONED, ENVELOPE DIMENSIONS DO NOT APPLY TO THESE PROJECTED EPOXY SURFACES.
 - TERMINAL AND MOUNTING HARDWARE MAY BE PACKAGED RATHER THAN INSTALLED.
 - COUNTRY OF ORIGIN IS SHOWN FOR ILLUSTRATION PURPOSES ONLY. COUNTRY OF ORIGIN TO BE IDENTIFIED AS REQUIRED.
 - DATE CODE PER 10588-285.
 - MARK IN APPROXIMATE POSITION SHOWN IN BLACK INK PER 12506-70.

2TC47-	CIRCUIT BREAKER FUSING CHARACTERISTICS						
	MAXIMUM CIRCUIT BREAKER FUSING TIME'S FOR A LOCKED CONTACT CONDITION AS A FUNCTION OF OVERLOAD						
	400%	500%	600%	700%	800%	900%	1000%
2 1/2	-----	-----	34	20	13	9.0	6.0
3	-----	-----	34	20	13	9.0	6.0
5	-----	90	36	18	10	6	3.5
7 1/2	69	28	14	8	4.5	3.5	2.0
10	60	35	20	12.0	7.0	4.0	2.5
15	60	25	14.0	8.0	5.0	3.0	2.0

SENSATA PART NO.	CUSTOMER PART NO.
2TC47-15	BACC18AD15
2TC47-10	BACC18AD10
2TC47-7 1/2	BACC18AD7
2TC47-5	BACC18AD5
2TC47-3	BACC18AD3
2TC47-2 1/2	BACC18AD2

FOR REFERENCE ONLY, CHECK LATEST REVISION BEFORE USE. PARTS MADE TO THIS PRINT MUST CONFORM TO E9898 REV. E

DRAWN J.D. MAYALL DATE 04-JUN-1981	ENGINEER C.M. COBB DATE	APPROVED	DATE	APPROVED	DATE
--	-------------------------------	----------	------	----------	------

SENSATA TECHNOLOGIES PROPRIETARY AND CONFIDENTIAL. NEITHER THIS PRINT NOR THE INFORMATION CONTAINED HEREON IS TO BE USED AGAINST THE INTERESTS OF SENSATA TECHNOLOGIES OR AGAINST THE INTERESTS OF ANY OF ITS AFFILIATED COMPANIES OR WHOLLY OWNED SUBSIDIARIES.

UNLESS OTHERWISE SPECIFIED DIMENSIONS ARE IN INCHES TOLERANCES DECIMALS ANGLES

DO NOT SCALE DRAWING

THIRD ANGLE PROJECTION

529 PLEASANT STREET
P.O. BOX 2964
ATTLEBORO, MA 02703

Sensata Technologies

TITLE PART NO 2TC47
AMBIENT COMPENSATED
HIGH TEMP. CIRCUIT BREAKER
PUSH-PULL, TRIP FREE
ENVELOPE DRAWING

SIZE DWG NO. **2TC47** REV. AA

SCALE AUTOCAD SHEET 1 OF 1

DEVICE: PROJECT: 1