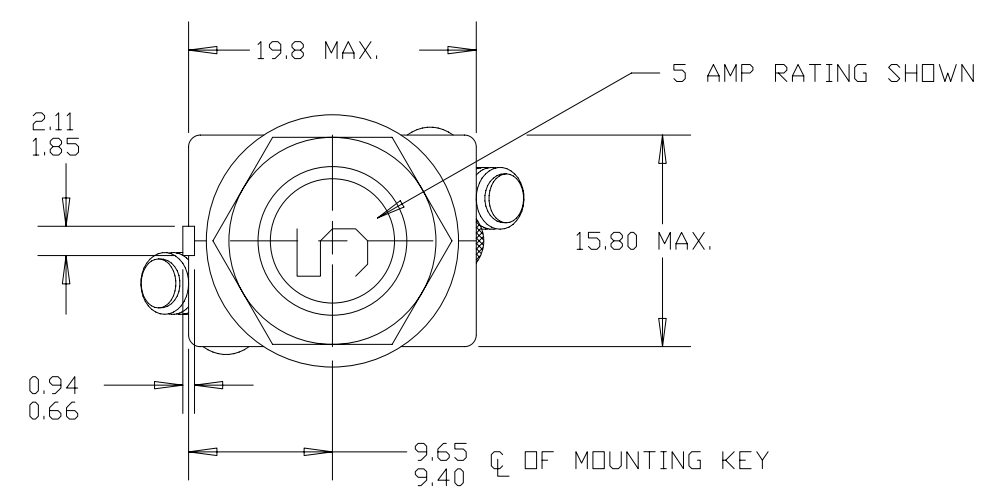


Property of  
Sensata Technologies

| ZONE | REV. | REVISION DESCRIPTION       | ECN NO.    | DATE        |
|------|------|----------------------------|------------|-------------|
|      | G    | CHANGE TO SENSATA LOGO; PD | ECN0037895 | 10-OCT-2007 |



PERFORMANCE CHARACTERISTICS

DETAIL PERFORMANCE

OVERLOAD CYCLING -----100 CYCLES AT 200% RATING  
 VIBRATION -----CURVE "J" OF EUROCAE ED-14B, 3 G'S, 2000 HZ  
 MECHANICAL SHOCK -----50 G'S  
 ACCELERATION -----10 G'S  
 SAND AND DUST -----12 HOURS  
 CORROSION -----SALT SPRAY 50 HOURS  
 HUMIDITY -----10 DAYS  
 EXPLOSION PROOF -----WHILE INTERRUPTING RUPTURE CURRENTS

ENDURANCE:

|         |                  |              |
|---------|------------------|--------------|
| 115 VAC | 400 HZ INDUCTIVE | 2500 CYCLES  |
| 28 VDC  | 400 HZ RESISTIVE | 5000 CYCLES  |
|         | INDUCTIVE        | 2500 CYCLES  |
|         | RESISTIVE        | 5000 CYCLES  |
|         | NO LOAD          | 10000 CYCLES |

CALIBRATION:

| RATED CURRENT  | TEMPERATURE ±5°C | MIN. ULT. TRIP | MAX. ULT. TRIP | 200%        |
|----------------|------------------|----------------|----------------|-------------|
| 1 THRU 15 AMP  | 23               | 115% RATING    | 140% RATING    | --          |
| 1 THRU 25 AMP  | -55              | 115% RATING    | 160% RATING    | --          |
| 20 THRU 25 AMP | 125              | 100% RATING    | 140% RATING    | --          |
| 1 THRU 25 AMP  | ALL              | --             | --             | 1.5-30 SEC. |

RUPTURE:

|               |                 |   |
|---------------|-----------------|---|
| 1 THRU 25 AMP | 120 VAC, 400 HZ | 65 x NOMINAL CURRENT OR 1000 AMPS RMS WHICHEVER IS LESS |
| 1 THRU 20 AMP | 28 VDC          | 6000 AMPS D.C.  |
| 25 AMP        | 28 VDC          | 1625 AMPS D.C.  |

MAXIMUM OPERATING FORCES

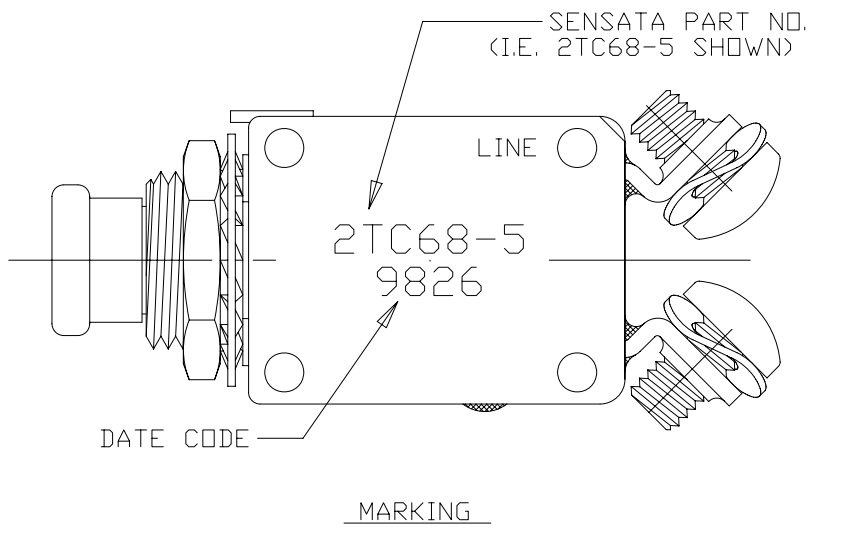
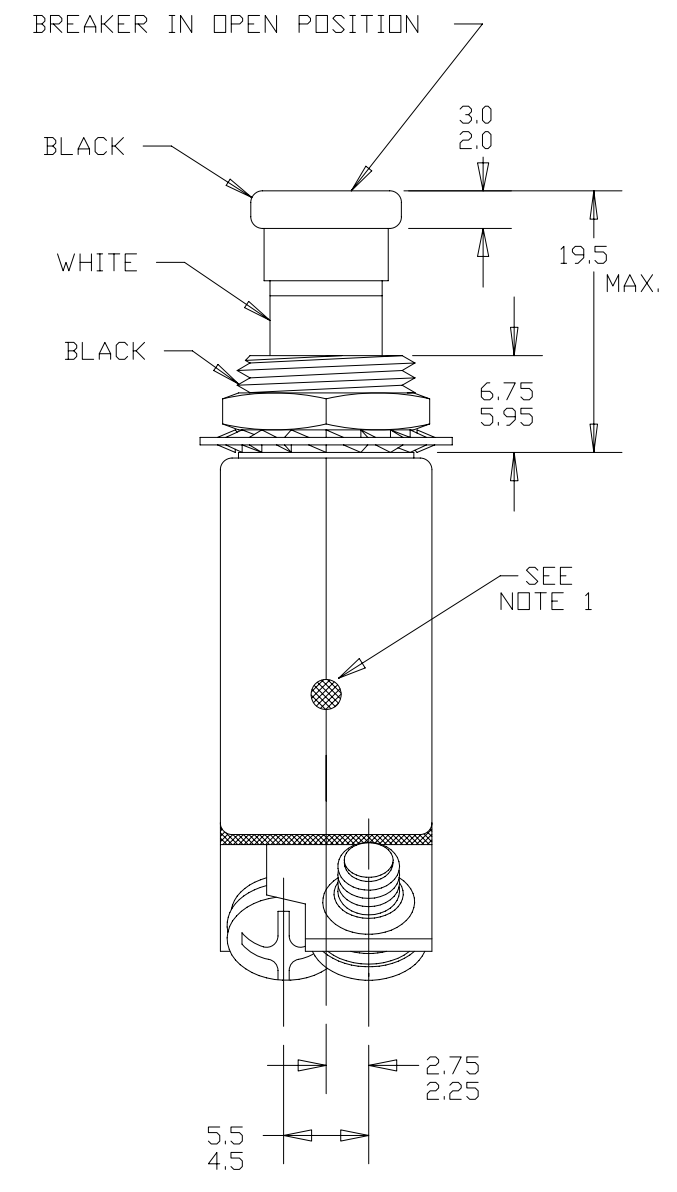
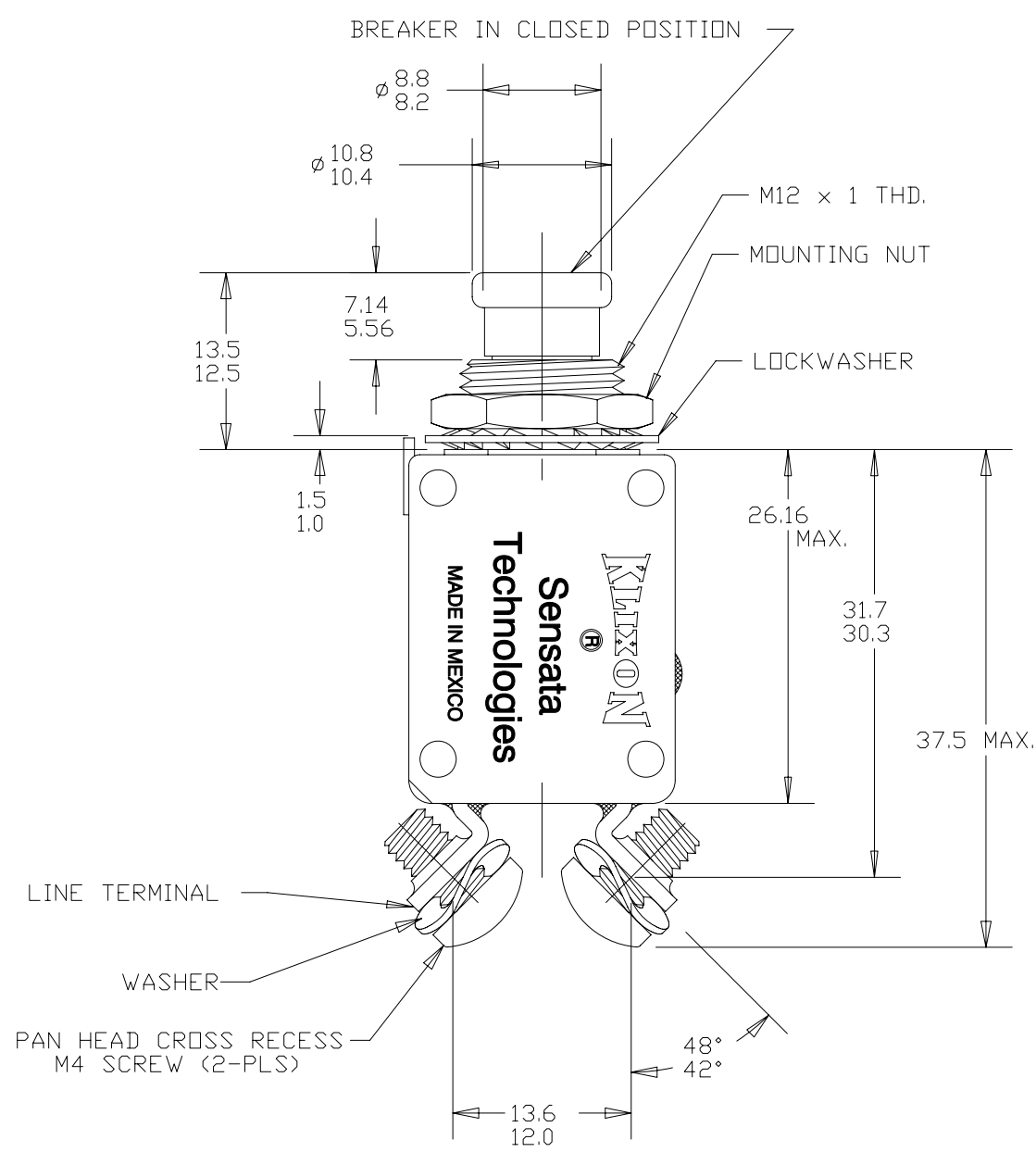
|          |               |
|----------|---------------|
| PULL OUT | -----5N-30N   |
| RESET    | -----3.5N-45N |

OPERATING ALTITUDE: 22,000 M (72,200 FT.)  
 WEIGHT: 26.0 GRAMS MAX.

VOLTAGE DROP:

|         |                      |
|---------|----------------------|
| 1 AMP   | -----1.10 VOLTS MAX. |
| 2 AMP   | -----0.75 VOLTS MAX. |
| 2.5 AMP | -----0.70 VOLTS MAX. |
| 3 AMP   | -----0.55 VOLTS MAX. |
| 5 AMP   | -----0.35 VOLTS MAX. |
| 7.5 AMP | -----0.30 VOLTS MAX. |
| 10 AMP  | -----0.30 VOLTS MAX. |
| 15 AMP  | -----0.25 VOLTS MAX. |
| 20 AMP  | -----0.25 VOLTS MAX. |
| 25 AMP  | -----0.20 VOLTS MAX. |

- NOTES:
1. EPOXY SURFACES ARE NON-DIMENSIONED, ENVELOPE DIMENSIONS DO NOT APPLY TO THESE PROJECTED EPOXY SURFACES.
  2. TERMINAL AND MOUNTING HARDWARE MAY BE PACKAGED RATHER THAN INSTALLED.
  3. COUNTRY OF ORIGIN IS SHOWN FOR ILLUSTRATION PURPOSES ONLY. COUNTRY OF ORIGIN TO BE IDENTIFIED AS REQUIRED.
  4. DATE CODE PER 10588-285.
  5. MARK IN APPROXIMATE POSITION SHOWN IN BLACK INK PER 12506-70.



|   |  |   |                           |
|---|--|---|---------------------------|
| FOR REFERENCE ONLY, CHECK LATEST REVISION BEFORE USE. PARTS MADE TO THIS PRINT MUST CONFORM TO E9898 REV. E |  | 529 PLEASANT STREET<br>P.O. BOX 2964<br>ATTLEBORO, MA 02703   |                           |
| DRAWN<br>J.D. MAYALL<br>DATE 06-FEB-1996  | SENSATA TECHNOLOGIES PROPRIETARY AND CONFIDENTIAL. NEITHER THIS PRINT NOR THE INFORMATION CONTAINED HEREON IS TO BE USED AGAINST THE INTERESTS OF SENSATA TECHNOLOGIES OR AGAINST THE INTERESTS OF ANY OF ITS AFFILIATED COMPANIES OR WHOLLY OWNED SUBSIDIARIES. | TITLE<br>PART NO 2TC68<br>AMBIENT COMPENSATED, HIGH TEMP. CIRCUIT BREAKER<br>PUSH-PULL, TRIP FREE<br>ENVELOPE DRAWING |                           |
| ENGINEER<br>N. WICKS<br>DATE 06-FEB-1996  | UNLESS OTHERWISE SPECIFIED DIMENSIONS ARE IN MM<br>TOLERANCES<br>DECIMALS ANGLES   | SIZE<br>C   | DWG NO.<br><b>2TC68</b>   |
| APPROVED<br>P. BERG<br>DATE 06-FEB-1996   | DO NOT SCALE DRAWING<br>THIRD ANGLE PROJECTION   | SCALE 1:1<br>AUTOCAD  | REV.<br>G<br>SHEET 1 OF 1 |
| DATE  | DEVICE:  | PROJECT: 1  |                           |