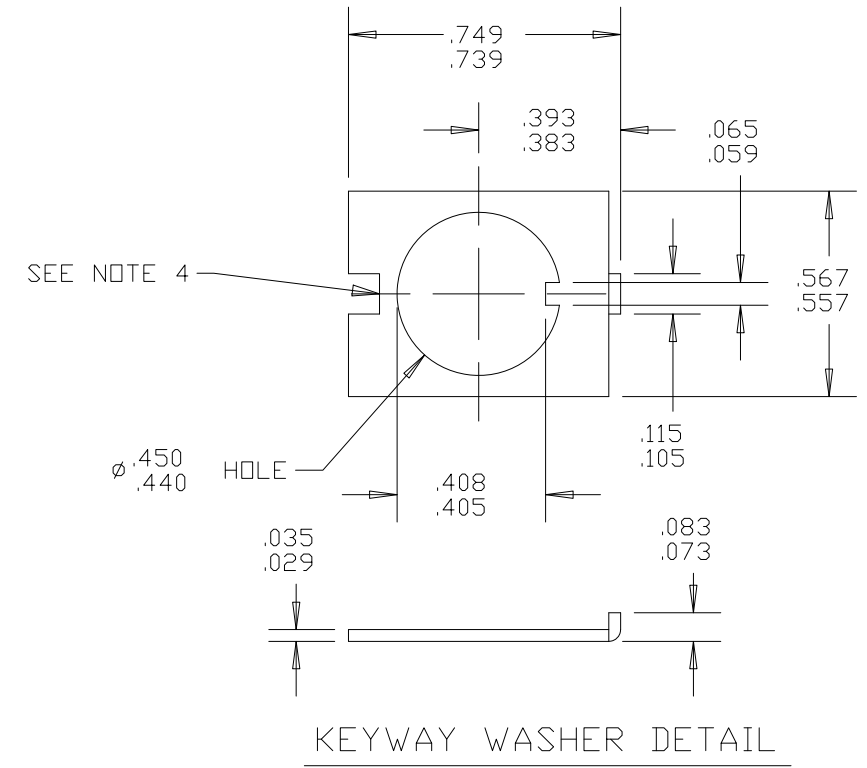
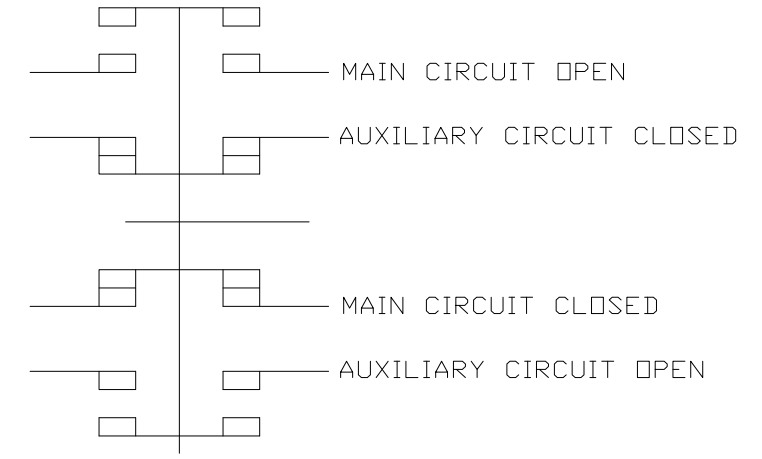


Property of
Sensata Technologies

ZONE	REV.	REVISION DESCRIPTION	ECN NO.	DATE
C4	L	.780 MAX WAS .781/.719; PD	ECO-111344	25-FEB-2015



PERFORMANCE CHARACTERISTICS

VIBRATION	-----	5 G'S MAXIMUM	50-500 HZ
SHOCK	-----	5 G'S MAXIMUM	
ACCELERATION	-----	5 G'S MAXIMUM	
ENDURANCE	-----	5000 MECHANICAL CYCLES, NO LOAD	
	-----	5000 ELECTRICAL TRIP CYCLES AT 28 VDC	
(POST ENDURANCE, MAXIMUM TRIP TIME IS 5 SECONDS)			
OPERATING FORCES	-----	5LBS MAXIMUM, PULLOUT AND RESET	
WEIGHT	-----	30 GRAMS MAXIMUM	
AUXILIARY CIRCUIT ENDURANCE			
5 - 120 VAC,	INDUCTIVE	2 AMP	5000 CYCLES
	RESISTIVE	3 AMP	5000 CYCLES
5 - 30 VDC,	INDUCTIVE	3 AMP	5000 CYCLES
	RESISTIVE	5 AMP	5000 CYCLES

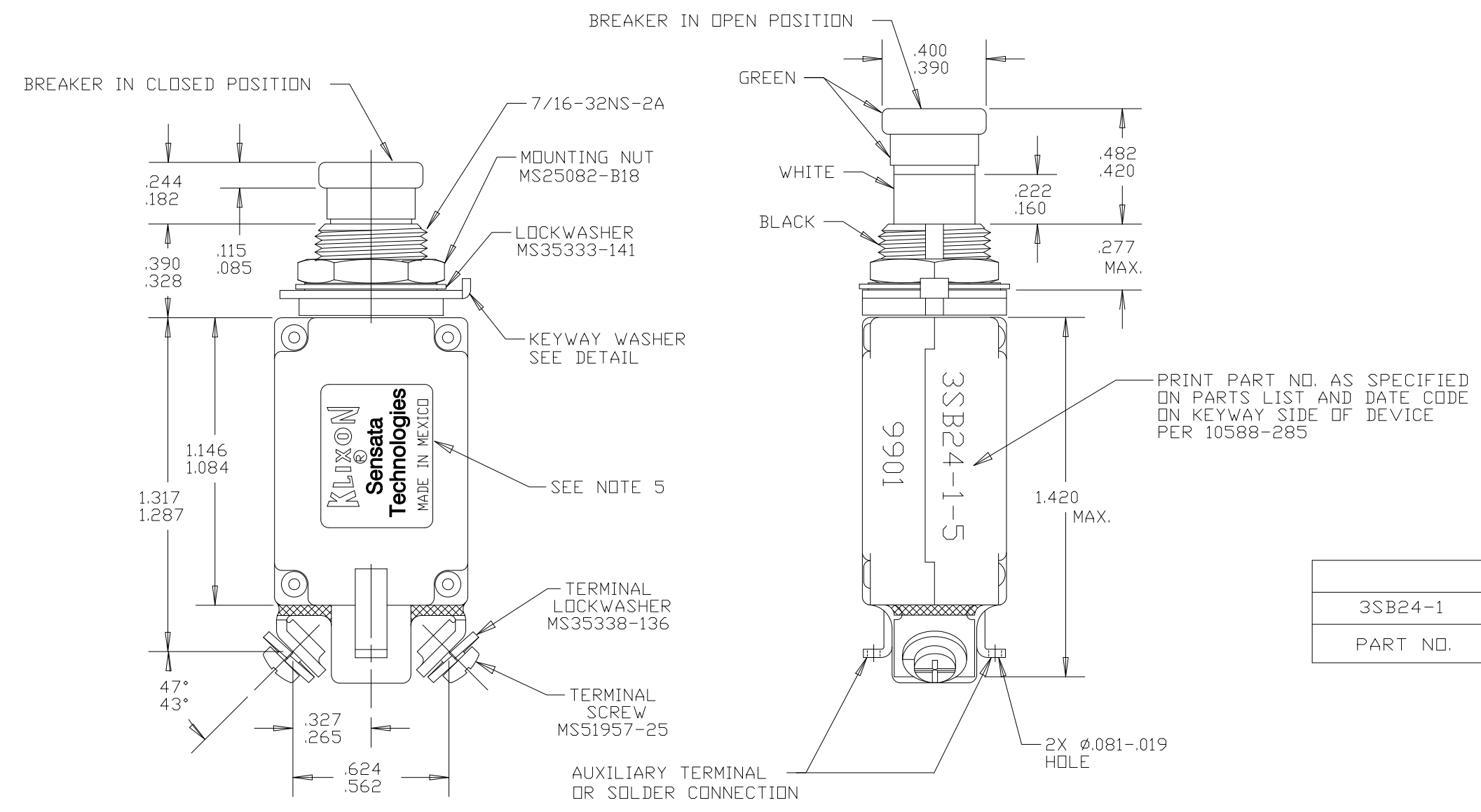
CUSTOMER WILL SPECIFY THE AMP RATING THEY WOULD LIKE TO HAVE INDICATED ON THE PUSHBUTTON. EXAMPLE, 3SB24-1-5 SIGNIFIES A 5 AMP RATING ON THE PUSHBUTTON. A 3SB24-1-B SIGNIFIES A BLANK RATING INSERT. A 3SB24-1-N SIGNIFIES NO RATING INSERT.

NOTES:

- ALL MOUNTING HARDWARE HAS A DULL BLACK FINISH.
- CIRCUIT BREAKERS ARE SUITABLE FOR MOUNTING IN A 1/8" THICK PANEL OR LESS.
- EPOXY SURFACES ARE NON-DIMENSIONED, ENVELOPE DIMENSIONS DO NOT APPLY TO THESE PROJECTED EPOXY SURFACES.
- NON FUNCTIONAL NOTCH ON THE BACK OF THE KEYWAY WASHER IS OPTIONAL.
- COUNTRY OF ORIGIN IS SHOWN FOR ILLUSTRATION PURPOSES ONLY. COUNTRY OF ORIGIN TO BE IDENTIFIED AS REQUIRED.
- TERMINALS MOUNTING HARDWARE SHOWN FOR ILLUSTRATION PURPOSE.

CALIBRATION AT 25°C

3SB24-1	200ma	3 SECONDS	
PART NO.	MAX. CURRENT DRAW AT 28 VDC	MAX. TRIP TIME	



FOR REFERENCE ONLY, CHECK LATEST REVISION BEFORE USE. PARTS MADE TO THIS PRINT MUST CONFORM TO E9898 REV. E		529 PLEASANT STREET P.O. BOX 2964 ATTLEBORO, MA 02703	
DRAWN CHAS. FLEURANT DATE 21-JUN-1994 ENGINEER K.B. GASSER DATE 21-JUN-1994 APPROVED	SENSATA TECHNOLOGIES PROPRIETARY AND CONFIDENTIAL. NEITHER THIS PRINT NOR THE INFORMATION CONTAINED HEREON IS TO BE USED AGAINST THE INTERESTS OF SENSATA TECHNOLOGIES OR AGAINST THE INTERESTS OF ANY OF ITS AFFILIATED COMPANIES OR WHOLLY OWNED SUBSIDIARIES.		TITLE 3SB24 STYLE CIRCUIT BREAKER PUSH-PULL ENVELOPE DRAWING
DATE APPROVED DATE	UNLESS OTHERWISE SPECIFIED DIMENSIONS ARE IN INCHES TOLERANCES DECIMALS ANGLES	DO NOT SCALE DRAWING THIRD ANGLE PROJECTION	SIZE DWG NO. 3SB24 REV. L SCALE 1:1 AUTOCAD SHEET 1 OF 1
DEVICE:		PROJECT:3457 1	