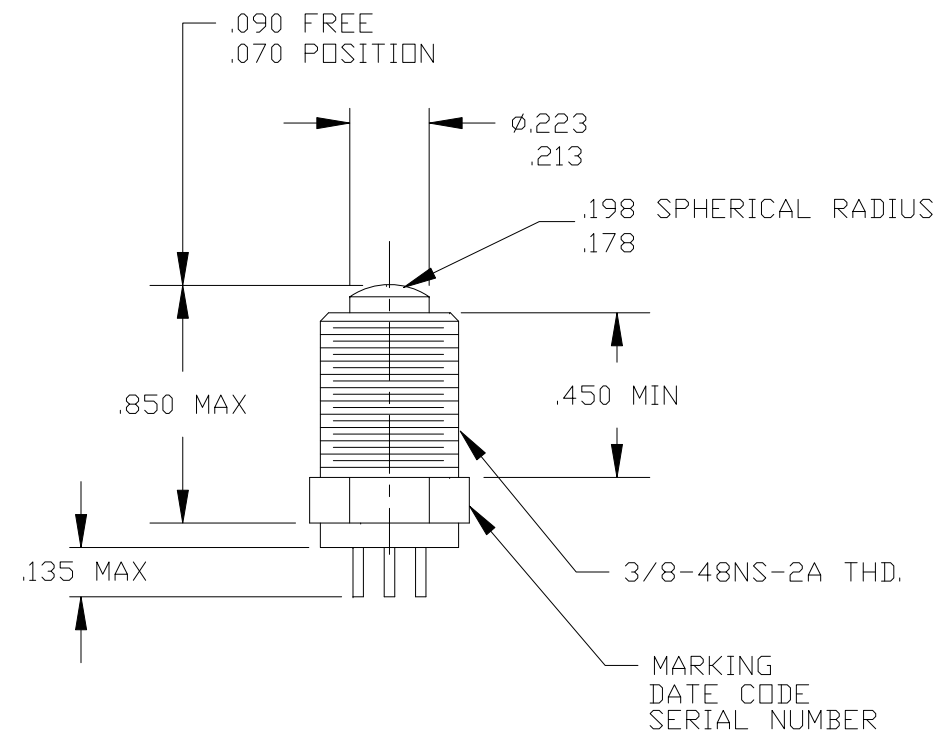
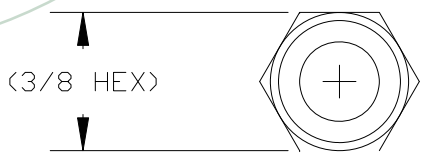


Property of  
Sensata Technologies

ZONE	REV.	REVISION DESCRIPTION	ECN NO.	DATE
D3 B3	D	REMOVE MARKING TABLE; REMOVE CUSTOMER MARKINGS, USE DATE CODE AND SERIAL # ONLY; PD	ECO-141980	28-DEC-2016



TERMINAL IDENTIFICATION (ON GLASS)  
COM - GREEN  
N.O. - PINK  
N.C. - BLACK

DATE CODE EXAMPLE:  
YR 78 12  
WEEK

CHARACTERISTICS:  
CONTACT ARRANGEMENT: SPDT  
ACTUATION FORCE: 28 OZS. MAX  
RELEASE FORCE: 4 OZ. MIN  
PRETRAVEL: .010 MAX  
MOVEMENT DIFFERENTIAL: .005 MAX  
OVERTRAVEL: .040 MIN  
LIFE AT RATED LOAD: 10,000 CYCLES  
AMBIENT TEMPERATURE RANGE: -275°F TO +275°F  
DIELECTRIC STRENGTH ACROSS:  
OPEN TERMINALS: 800 VRMS (5 SEC)  
TERMINALS TO CASE: 1000 VRMS (5 SEC)  
VOLTAGE DROP AT 1 AMP: .090  
SEAL: CLASS 5 (HERMETIC)  
PER MIL-S-8805  
MAX ALLOWED LEAKAGE:  $1 \times 10^{-8}$  STD CC HE/SEC.  
BACKFILL: DRY NITROGEN  
MAX FORCE ALLOWED ON TOP OF ACTUATOR: 5 LBS.

SEA LEVEL AND 70,000 FT. ALTITUDE	
LOAD	28 VOLTS D.C.
RESISTIVE	3 AMPS
INDUCTIVE	1 AMP
LAMP	1 AMP

SHOCK RESISTANCE WITHOUT CONTACT CHATTER: 200 G'S  
VIBRATION RESISTANCE (55-2000 HZ) WITHOUT CONTACT CHATTER: 65 G'S  
WEIGHT: 1.3 OZ.

HEATSINK THE TERMINAL WHEN SOLDERING LEADS TO THE SWITCH.

IT IS RECOMMENDED THAT THE TERMINALS BE ENCLOSED IN POTTING PRIOR TO ANY TESTING.

FOR REFERENCE ONLY, CHECK LATEST REVISION BEFORE USE. PARTS MADE TO THIS PRINT MUST CONFORM TO E9898 REV. E	
DRAWN J.PARENT DATE 10-JAN-1978	SENSATA TECHNOLOGIES PROPRIETARY AND CONFIDENTIAL. NEITHER THIS PRINT NOR THE INFORMATION CONTAINED HEREON IS TO BE USED AGAINST THE INTERESTS OF SENSATA TECHNOLOGIES OR AGAINST THE INTERESTS OF ANY OF ITS AFFILIATED COMPANIES OR WHOLLY OWNED SUBSIDIARIES.
ENGINEER D.RICE DATE 13-JAN-1978	
APPROVED	INTERPRET DIMENSIONING AND TOLERANCING PER ASME Y14.5-2009. UNLESS OTHERWISE SPECIFIED DIMENSIONS ARE IN INCHES. TOLERANCES DECIMALS ANGLES
DATE	DO NOT SCALE DRAWING THIRD ANGLE PROJECTION
APPROVED	
DATE	

**Sensata Technologies**  
529 PLEASANT STREET  
P.O. BOX 2964  
ATTLEBORO, MA 02703

TITLE  
HERMETICALLY SEALED  
SPDT SWITCH PLUNGER ACTUATED  
ENVELOPE DRAWING

SIZE B	DWG NO. <b>4AT72-5</b>	REV. D
SCALE 1:1	AUTOCAD	SHEET 1 OF 1

DEVICE: PROJECT: