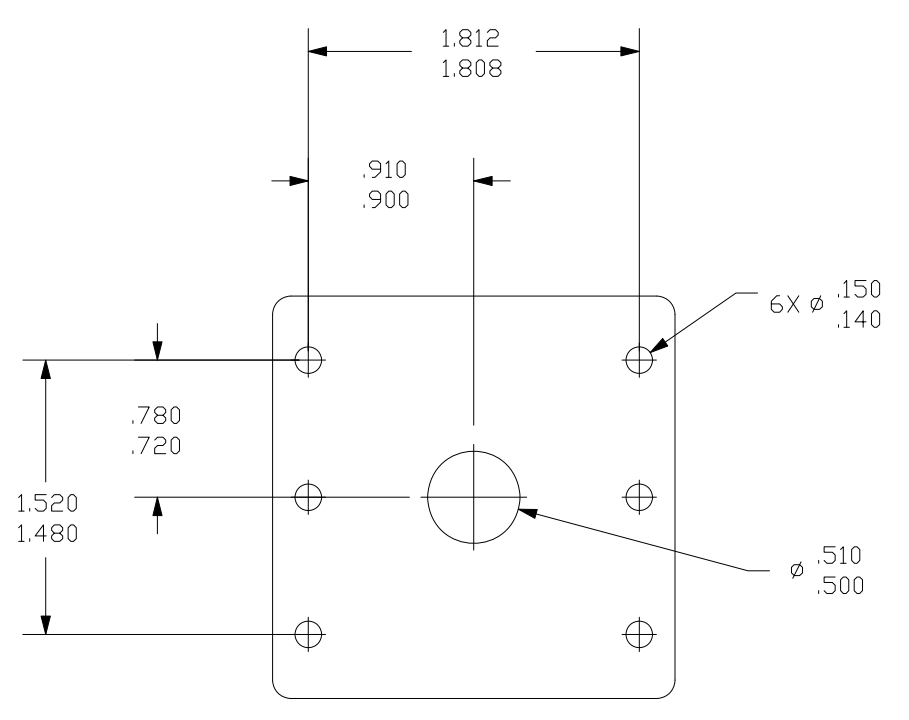
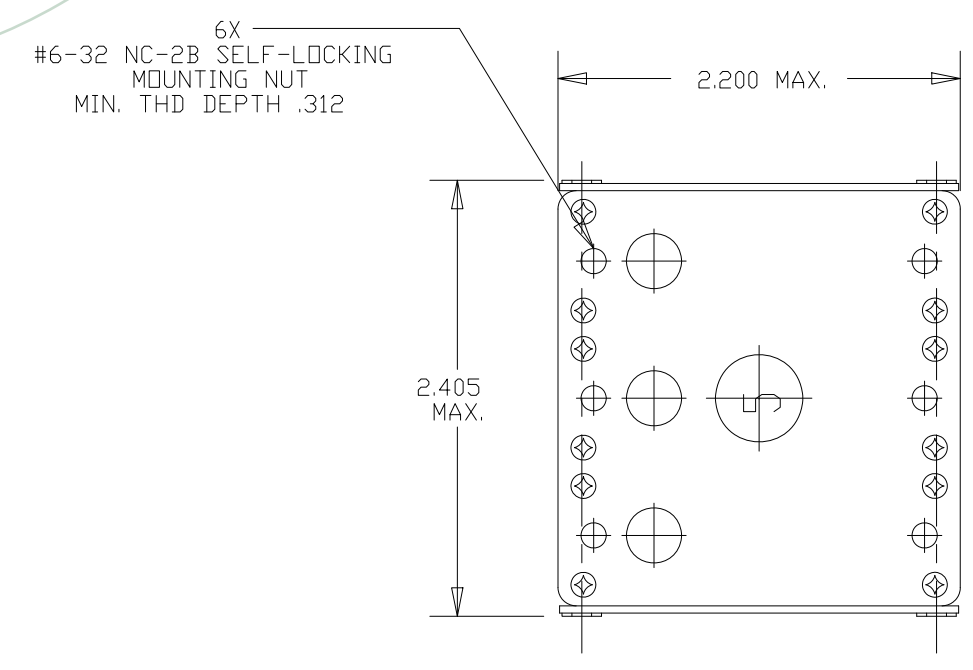


Property of
Sensata Technologies

ZONE	REV.	REVISION DESCRIPTION	ECN NO.	DATE
B4	AB	REMOVE FAA-PMA; DETAIL VIEW OF MOUNTING HOLES; REMOVE DUAL DIMS PER CURRENT STD; IN TABLE; REMOVE FAA CODE COLUMN; PD	ECO-094863	14-JAN-2014



DETAIL VIEW OF
MOUNTING HOLE LOCATION
INCHES [MM]

CALIBRATION:

SINGLE PHASE LOAD:

AMBIENT TEMP.	200% TIME* SEC.	400% TIME SEC.	1000% TIME SEC.
-54°C	15 - 65	2.3 - 10	.33 - 1.4
25°C	15 - 65	2.3 - 10	.33 - 1.4
71°C	15 - 65	2.3 - 10	.33 - 1.4

THREE PHASE BALANCED LOAD:

AMBIENT TEMP.	200% TIME* SEC.	400% TIME SEC.	1000% TIME SEC.
-54°C	15 - 180	2.3 - 11	.33 - 1.4
25°C	12 - 65	2.3 - 10	.33 - 1.4
71°C	12 - 65	2.0 - 10	.30 - 1.4

ULTIMATE TRIP:

AMBIENT TEMP.	HOLD	TRIP
-54°C	105%	170%
25°C	105%	140%
71°C	90%	140%

AMBIENT TEMP.	LOAD IN ONE PHASE	LOAD IN OTHER TWO PHASES	
-54°C	170%	80%	MUST TRIP
25°C	145%	100%	MUST TRIP
25°C	160%	0%	MUST TRIP

RUPTURE:
ALL RATINGS: 120 VAC LINE TO NEUTRAL 400 CYCLES 2800 AMPS
205 VAC LINE TO LINE 400 CYCLES 2800 AMPS
120 VAC THREE-PHASE 400 CYCLES 2800 AMPS

ENDURANCE: 120 VAC, 400 C.P.S.
MECHANICAL 5,000 CYCLES
RESISTIVE LOAD 5,000 CYCLES
INDUCTIVE LOAD ≥ 35 AMPS 1,250 CYCLES
INDUCTIVE LOAD < 25 AMPS 2,500 CYCLES

WEIGHT: .65 lbs.

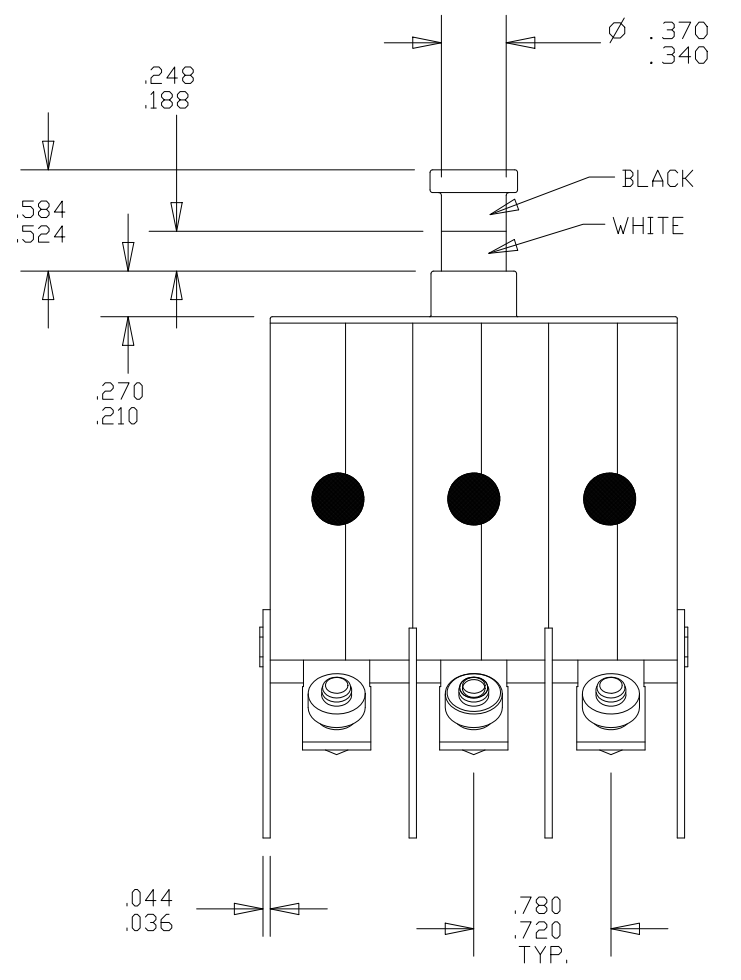
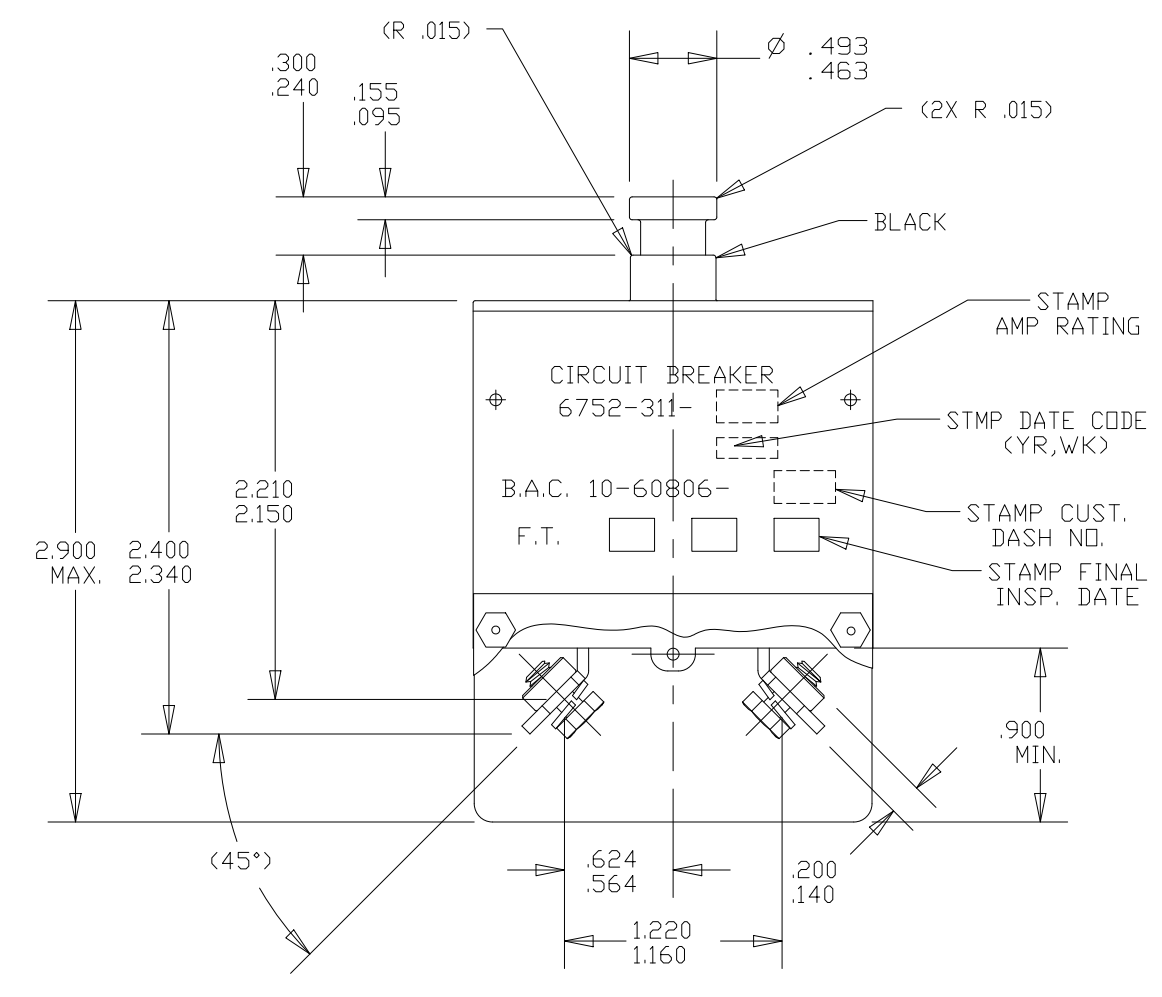
MECHANICAL SHOCK PER MIL-C-5809C
SAND AND DUST PER MIL-E-5272B
CORROSION PER MIL-C-5809C
HUMIDITY PER MIL-C-5809C
EXPLOSION PROOF PER MIL-E-5272B

FOR OTHER CHARACTERISTICS REFER TO SPECIFICATION 12552-2
THIS DRAWING TAKES PRECEDENCE OVER 12552-2

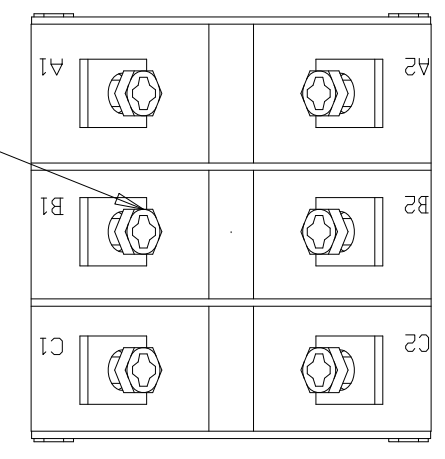
OPERATING FORCE: OPENING 6 - 14 LBS.
CLOSING 14 - 23 LBS

*APPLIES TO ALL RATINGS EXCEPT 2.5 AMP, SINGLE PHASE & THREE PHASE
200% TIME FOR 2.5 AMP RATING AT -54°C TO 71°C IS 10 TO 65 SEC.

- NOTES:
- QC FINAL + IN PROCESS STAMP REQUIRED ON LETTERED SIDE OF BREAKER.
 - WHEN THE BREAKER BUTTON IS RESET AFTER TRIPPING ON AN OVERLOAD, CONTINUITY WILL BE ESTABLISHED ON ALL THREE PHASES. IT WILL NOT BE POSSIBLE TO MAINTAIN THE BREAKER IN A SINGLE PHASE OR TWO PHASE CONDITION.
 - DELETE B.A.C. NO. ON 2 1/2 AMPS.



6X #8-32 NC-2A X 5/16 LONG HEX HEAD PHILLIPS RECESS SCREW AND CAPTIVE SPLIT LOCKWASHER .031 THICK



BOTTOM VIEW SHOWING
PHASE IDENTIFICATION
PART NO. 6752-311-5 SHOWN

6752-311-50	50	1050
6752-311-40	40	1040
6752-311-35	35	1035
6752-311-25	25	1025
6752-311-20	20	1020
6752-311-15	15	1015
6752-311-10	10	1010
6752-311-7 1/2	7 1/2	1007
6752-311-5	5	1005
6752-311-2 1/2	2 1/2	SEE NOTE #3
CPD PART NO.	CPD DASH NO.	CUSTOMER DASH NO.

FOR REFERENCE ONLY, CHECK LATEST REVISION BEFORE USE.
PARTS MADE TO THIS PRINT MUST CONFORM TO E9898 REV. E

DRAWN CHAS. FLEURANT DATE 08-APR-1997 ENGINEER K.B. GASSER DATE 08-APR-1997 APPROVED D.C. KARAVOLIS DATE 08-APR-1997 APPROVED	SENSATA TECHNOLOGIES PROPRIETARY AND CONFIDENTIAL. NEITHER THIS PRINT NOR THE INFORMATION CONTAINED HEREON IS TO BE USED AGAINST THE INTERESTS OF SENSATA TECHNOLOGIES OR AGAINST THE INTERESTS OF ANY OF ITS AFFILIATED COMPANIES OR WHOLLY OWNED SUBSIDIARIES. INTERPRET DIMENSIONING AND TOLERANCING PER ASME Y14.5-2009. UNLESS OTHERWISE SPECIFIED DIMENSIONS ARE IN INCHES. TOLERANCES DECIMALS ANGLES	529 PLEASANT STREET P.O. BOX 2964 ATTLEBORO, MA 02703 TITLE 6752-311 TYPE 3 - PHASE PUSH PULL-TRIP FREE CIRCUIT BREAKER ENVELOPE DRAWING SIZE DWG NO. C 6752-311 REV. AB SCALE 1:1 AUTOCAD SHEET 1 OF 1
--	---	---

DO NOT SCALE DRAWING THIRD ANGLE PROJECTION