

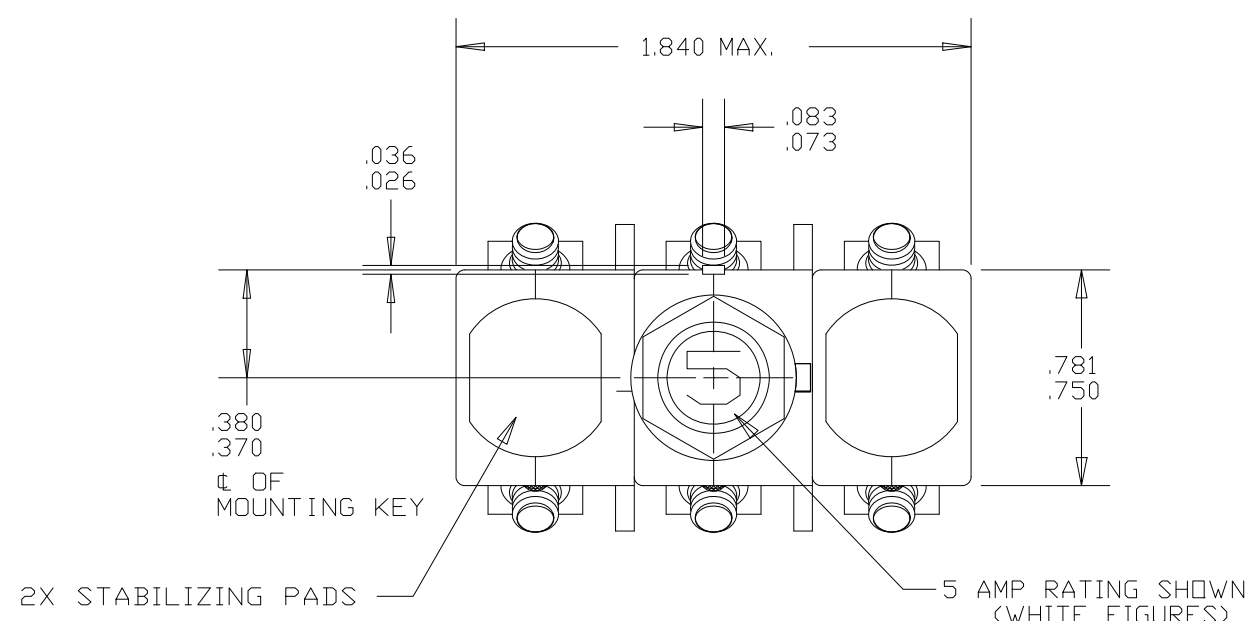
4

3

2

1

ZONE	REV.	REVISION DESCRIPTION	ECN NO.	DATE
	AB	PICTORIAL CHANGE, UPDATED TERMINAL SCREWS AND WASHERS; GML	ECN0042417	13-JUN-2008



PERFORMANCE CHARACTERISTICS

DETAIL PERFORMANCE PER MIL-C-5809

OVERLOAD CYCLING	-----	100 CYCLES AT 200% RATING
MECHANICAL SHOCK	-----	50 G'S
ACCELERATION	-----	10 G'S
SAND AND DUST	-----	12 HOURS
CORROSION	-----	SALT SPRAY 50 HOURS
HUMIDITY	-----	10 DAYS
EXPLOSION PROOF	-----	WHILE INTERRUPTING RUPTURE CURRENTS

ENDURANCE:	120 VAC	400 HZ INDUCTIVE	2500 CYCLES
		400 HZ RESISTIVE	5000 CYCLES
	MECHANICAL	NO LOAD	5000 CYCLES

VIBRATION -----PER LOCKHEED DOCUMENT LS10159

SINGLE * OR THREE PHASE CALIBRATION:	2 AMP THRU 10 AMP				
	MIN. ULT. TRIP	MAX. ULT. TRIP	200%	500%	1000%
+25°C, +77°F	110% RATING	140% RATING	4-20 SEC.	.40-2.0 SEC.	.10-.53 SEC.
-55°C, -65°F	110% RATING	160% RATING	6-40 SEC.	.5-3.5 SEC.	.15-.80 SEC.
+71°C, +160°F	100% RATING	140% RATING	2.5 - 15 SEC.	.25-1.1 SEC.	.06-.30 SEC.

RUPTURE:	2 AMP THRU 10 AMP	120 VAC, 400 HZ	2000 AMPS
----------	-------------------	-----------------	-----------

MAXIMUM OPERATING FORCES	
PULL OUT	----- 12 LBS. MAX. (53.4 N)
RESET	----- 12 LBS. MAX. (53.4 N)

OPERATING ALTITUDE: 70,000 FT. (21,000 M)

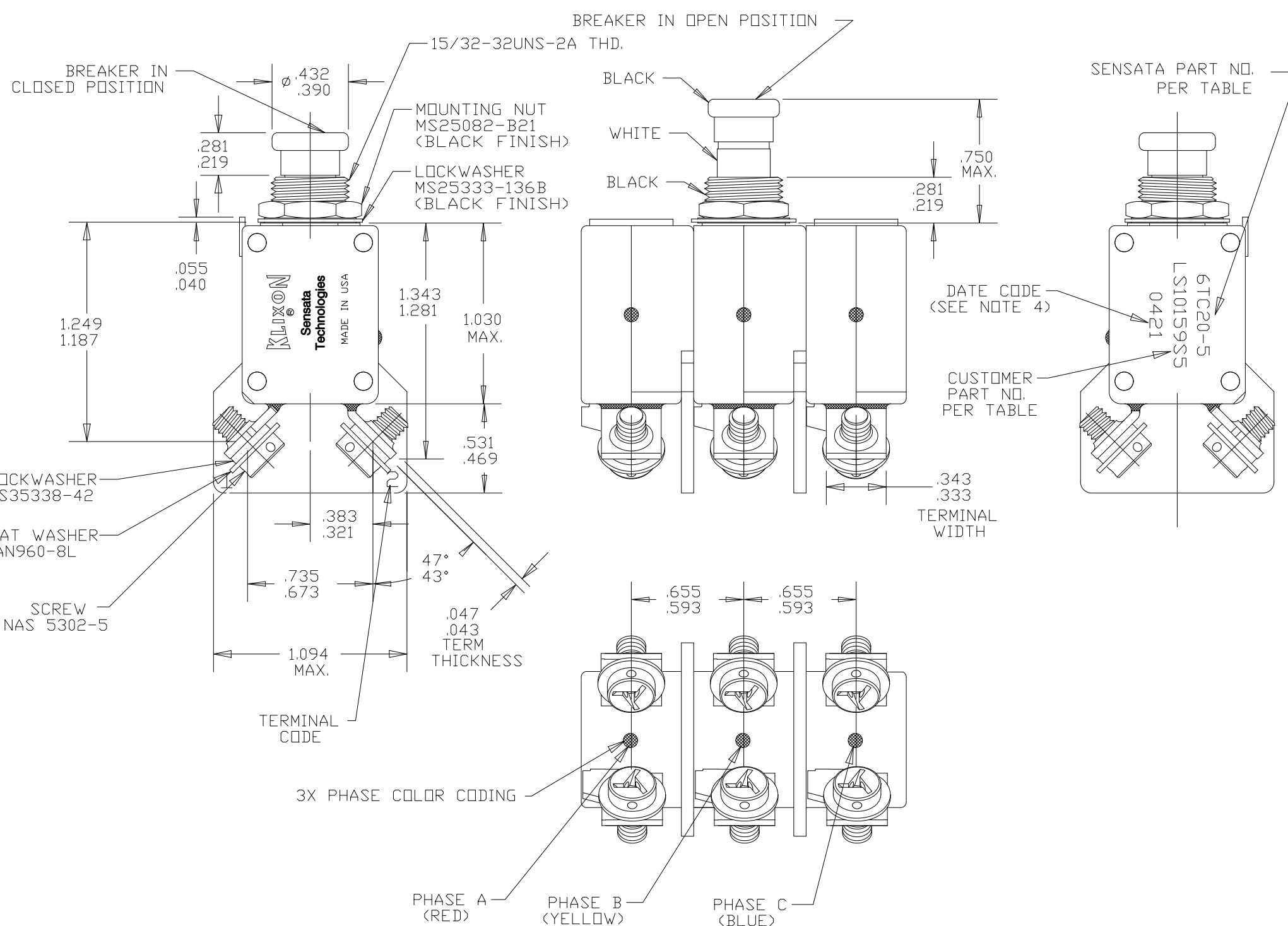
WEIGHT: 65.0 GRAMS MAX. (.143 LBS.)

COORDINATION: PER SPECIFICATION 12506-62-1

VOLTAGE DROP:	
2 AMP	----- .430 VOLTS MAX.
2 1/2 AMP	----- .375 VOLTS MAX.
3 AMP	----- .352 VOLTS MAX.
4 AMP	----- .297 VOLTS MAX.
5 AMP	----- .231 VOLTS MAX.
7 1/2 AMP	----- .193 VOLTS MAX.
10 AMP	----- .176 VOLTS MAX.

NOTES:

1. THIS DEVICE CONFORMS TO LOCKHEED SPECIFICATION LS10159.
2. TERMINAL AND MOUNTING HARDWARE MAY BE PACKAGED RATHER THAN INSTALLED.
3. COUNTRY OF ORIGIN IS SHOWN FOR ILLUSTRATION PURPOSES ONLY. COUNTRY OF ORIGIN TO BE IDENTIFIED AS REQUIRED.
4. DATE CODE PER 10588-285.
5. ALL MARKINGS TO BE MADE IN APPROXIMATE POSITIONS SHOWN WITH BLACK INK PER 12506-70, 3/32 HIGH CHARACTERS.



6TC20-10	LS10159S10
6TC20-7 1/2	LS10159S7
6TC20-5	LS10159S5
6TC20-4	-----
6TC20-3	-----
6TC20-2 1/2	LS10159S2
6TC20-2	-----
PART NO.	CUSTOMER PSRT NO.

FOR REFERENCE ONLY, CHECK LATEST REVISION BEFORE USE. PARTS MADE TO THIS PRINT MUST CONFORM TO E9898 REV. E		529 PLEASANT STREET P.O. BOX 2964 ATTLEBORO, MA 02703	
DRAWN CHAS. FLEURANT DATE 11-MAR-1995 ENGINEER M.A. VIDAL DATE 11-MAR-1995 APPROVED	SENSATA TECHNOLOGIES PROPRIETARY AND CONFIDENTIAL. NEITHER THIS PRINT NOR THE INFORMATION CONTAINED HEREON IS TO BE USED AGAINST THE INTERESTS OF SENSATA TECHNOLOGIES OR AGAINST THE INTERESTS OF ANY OF ITS AFFILIATED COMPANIES OR WHOLLY OWNED SUBSIDIARIES.	TITLE AMBIENT COMPENSATED CIRCUIT BREAKER PUSH-PULL, TRIP FREE ENVELOPE DRAWING	
DATE APPROVED DATE	UNLESS OTHERWISE SPECIFIED DIMENSIONS ARE IN INCHES TOLERANCES DECIMALS ANGLES	SIZE C	DWG NO. 6TC20
DO NOT SCALE DRAWING	THIRD ANGLE PROJECTION	SCALE N/A	REV. AB SHEET 1 OF 1

4

3

2

1