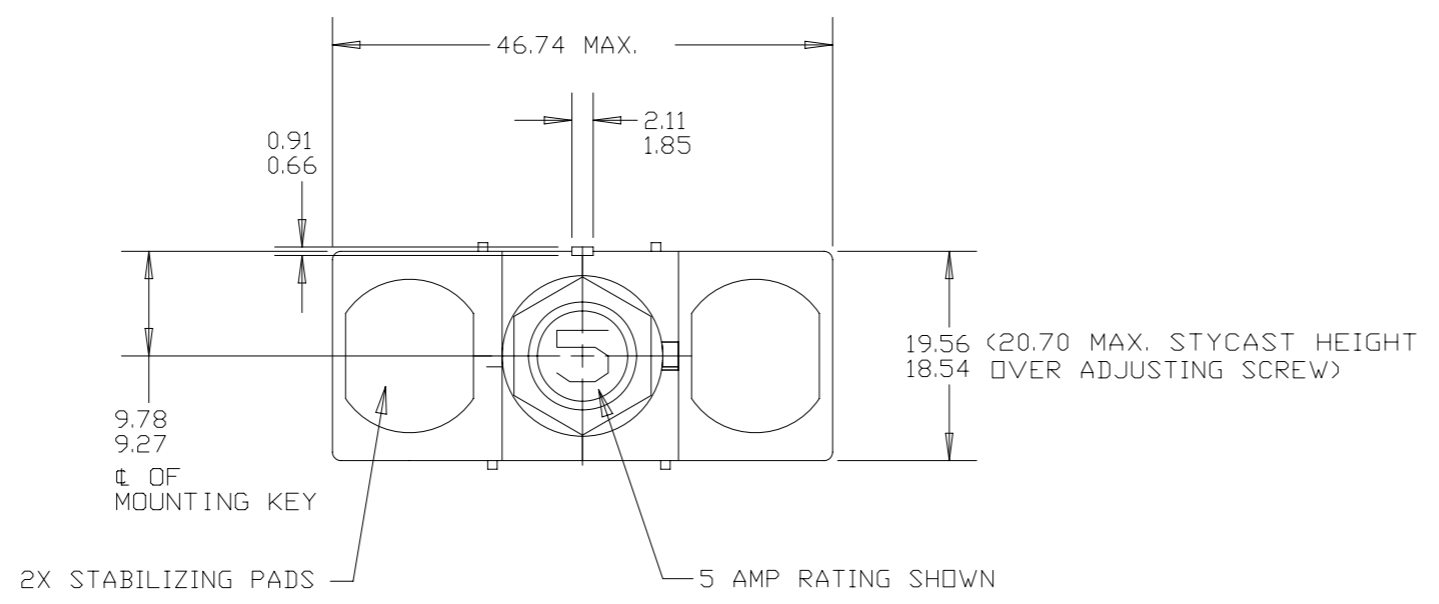


Property of
Sensata Technologies

ZONE	REV.	REVISION DESCRIPTION	ECN NO.	DATE
A2	V	ADD "CUSTOMER PART NO. (WITHOUT TERMINAL HARDWARE)" COLUMN TO TABLE; PD	ECO-066975	07-JUL-2011



PERFORMANCE CHARACTERISTICS

DETAIL PERFORMANCE PER NSA931322

OVERLOAD CYCLING	-----	100 CYCLES AT 200% RATING
VIBRATION	-----	CURVE "J" OF EUROCAE ED-14B 3G'S, 2000HZ
MECHANICAL SHOCK	-----	50 G'S
ACCELERATION	-----	10 G'S
SAND AND DUST	-----	12 HOURS
CORROSION	-----	SALT SPRAY 50 HOURS
HUMIDITY	-----	10 DAYS
EXPLOSION PROOF	-----	WHILE INTERRUPTING RUPTURE CURRENTS

ENDURANCE:	120 VAC	400 HZ INDUCTIVE	2500 CYCLES
MECHANICAL		400 HZ RESISTIVE	5000 CYCLES
		NO LOAD	5000 CYCLES

SINGLE * OR THREE PHASE CALIBRATION:	2 AMP THRU 25 AMP				
	MIN. ULT. TRIP	MAX. ULT. TRIP	200%	500%	1000%
+25°C, +77°F	110% RATING	145% RATING	4-20 SEC.	.40-2.0 SEC.	.10-.53 SEC.
-54°C, -65°F	110% RATING	165% RATING	6-40 SEC.	.55-3.5 SEC.	.15-.80 SEC.
+71°C, +160°F	100% RATING	145% RATING	3-20 SEC.	.33-1.7 SEC.	.08-.40 SEC.

RUPTURE:	2 AMP THRU 25 AMP	120 VAC, 400 HZ	65 In AMPS (RMS)
----------	-------------------	-----------------	------------------

MAXIMUM OPERATING FORCES	
PULL OUT	----- 12 LBS. MAX. (53.4 N)
RESET	----- 12 LBS. MAX. (53.4 N)

OPERATING ALTITUDE: 70,000 FT. (21,000 M)

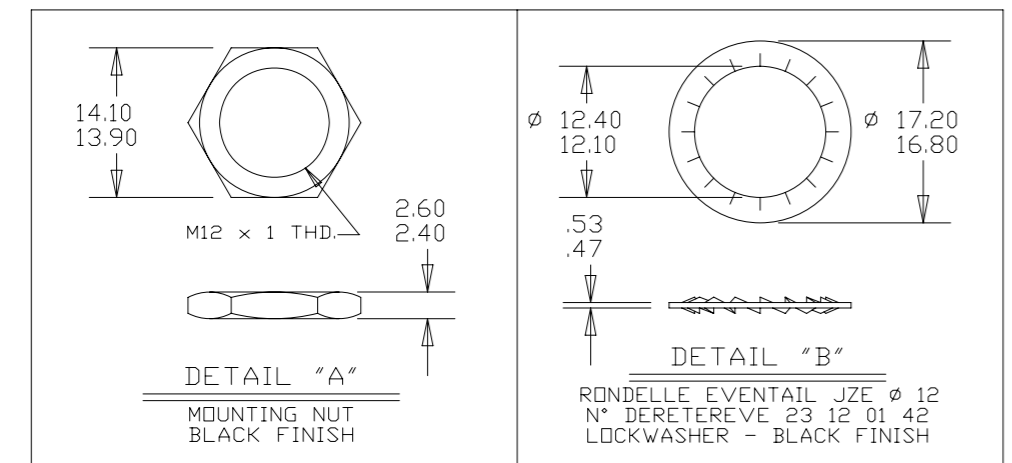
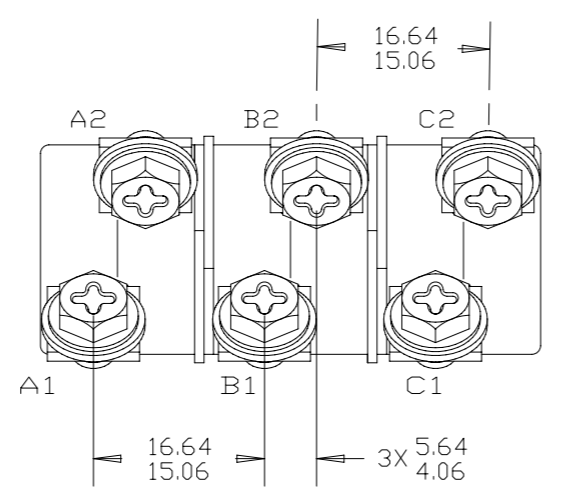
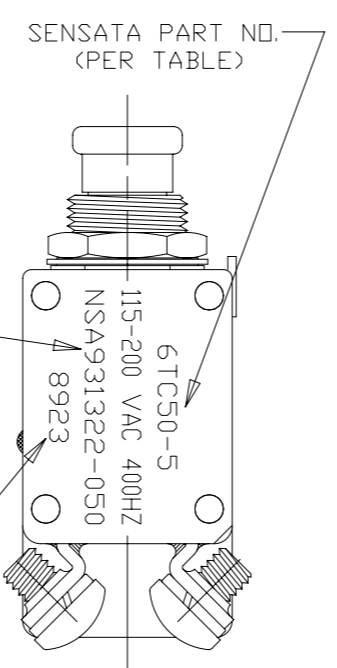
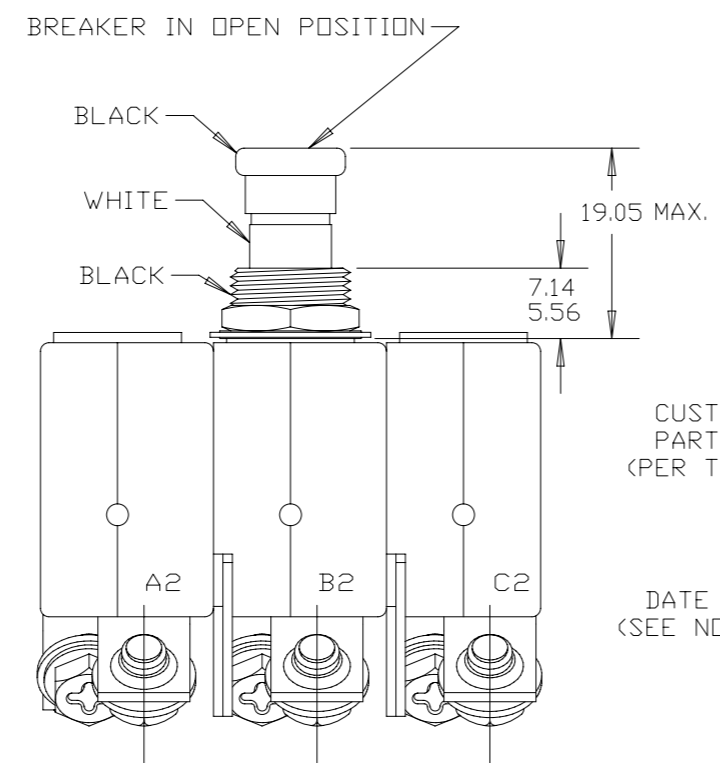
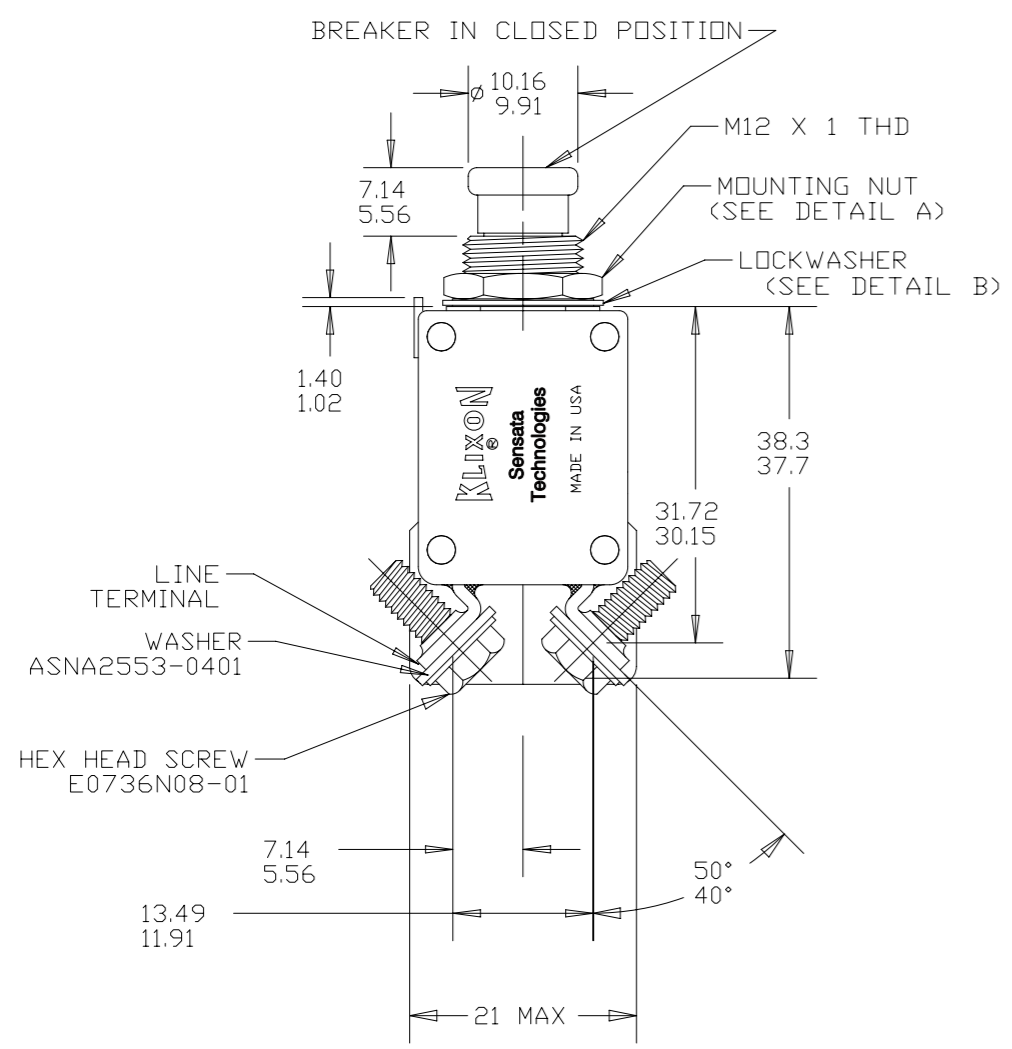
WEIGHT: 65.0 GRAMS MAX. (1.43 LBS.)

VOLTAGE DROP:	
2 AMP	----- 0.70 VOLTS MAX.
2.5 AMP	----- 0.50 VOLTS MAX.
3 AMP	----- 0.40 VOLTS MAX.
4 AMP	----- 0.37 VOLTS MAX.
5 AMP	----- 0.35 VOLTS MAX.
7.5 AMP	----- .192 VOLTS MAX.
10 AMP	----- .176 VOLTS MAX.
15 AMP	----- .176 VOLTS MAX.
20 AMP	----- .176 VOLTS MAX.
25 AMP	----- .176 VOLTS MAX.

* SINGLE PHASE MAXIMUM ULTIMATE TRIP VALUES APPLY WITH OTHER TWO PHASES CARRYING 100% OF RATED CURRENT

NOTES:

- EPOXY SURFACES ARE NON-DIMENSIONED, ENVELOPE DRAWING DIMENSIONS DO NOT APPLY TO THESE PROJECTED EPOXY SURFACES.
- TERMINAL AND MOUNTING HARDWARE MAY BE PACKAGED RATHER THAN INSTALLED.
- COUNTRY OF ORIGIN IS SHOWN FOR ILLUSTRATION PURPOSES ONLY. COUNTRY OF ORIGIN TO BE IDENTIFIED AS REQUIRED.
- DATE CODE PER 10588-285.
- ALL MARKINGS TO BE MADE IN APPROXIMATE POSITIONS SHOWN WITH BLACK INK PER 12506-70, 2MM HIGH CHARACTERS.



SENSATA PART NO.	CUSTOMER PART NO.	CUSTOMER PART NO. (WITHOUT TERMINAL HARDWARE)
6TC50-25	NSA931322-250	NSA931322-250A
6TC50-20	NSA931322-200	NSA931322-200A
6TC50-15	NSA931322-150	NSA931322-150A
6TC50-10	NSA931322-100	NSA931322-100A
6TC50-7 1/2	NSA931322-075	NSA931322-075A
6TC50-5	NSA931322-050	NSA931322-050A
6TC50-4	NSA931322-040	NSA931322-040A
6TC50-3	NSA931322-030	NSA931322-030A
6TC50-2 1/2	NSA931322-025	NSA931322-025A
6TC50-2	NSA931322-020	NSA931322-020A

FOR REFERENCE ONLY, CHECK LATEST REVISION BEFORE USE. PARTS MADE TO THIS PRINT MUST CONFORM TO E9898 REV. E		529 PLEASANT STREET P.O. BOX 2964 ATTLEBORO, MA 02703	
DRAWN CHAS. FLEURANT DATE 03-APR-1994	ENGINEER J.R. FOWLER DATE 30-APR-1994 APPROVED	<p>SENSATA TECHNOLOGIES PROPRIETARY AND CONFIDENTIAL. NEITHER THIS PRINT NOR THE INFORMATION CONTAINED HEREON IS TO BE USED AGAINST THE INTERESTS OF SENSATA TECHNOLOGIES OR AGAINST THE INTERESTS OF ANY OF ITS AFFILIATED COMPANIES OR WHOLLY OWNED SUBSIDIARIES.</p> <p>UNLESS OTHERWISE SPECIFIED DIMENSIONS ARE IN MILLIMETERS TOLERANCES DECIMALS ANGLES</p>	
DATE APPROVED	DATE	SIZE A2	DWG NO. 6TC50
DATE	DO NOT SCALE DRAWING	THIRD ANGLE PROJECTION	REV. V
SCALE 1:1		AUTOCAD	SHEET 1 OF 1
DEVICE: 6TC50 PROJECT: 1112		1	