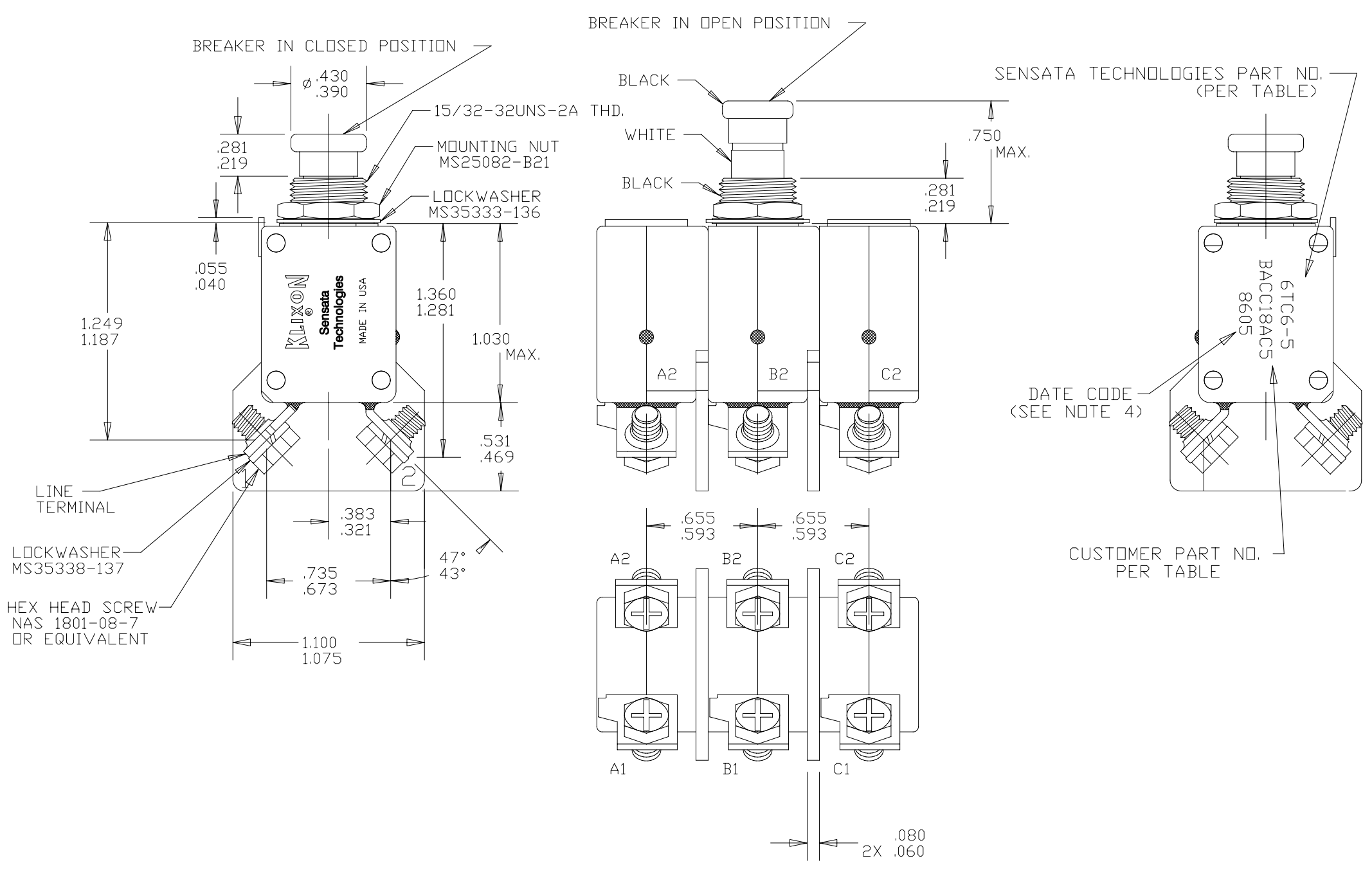
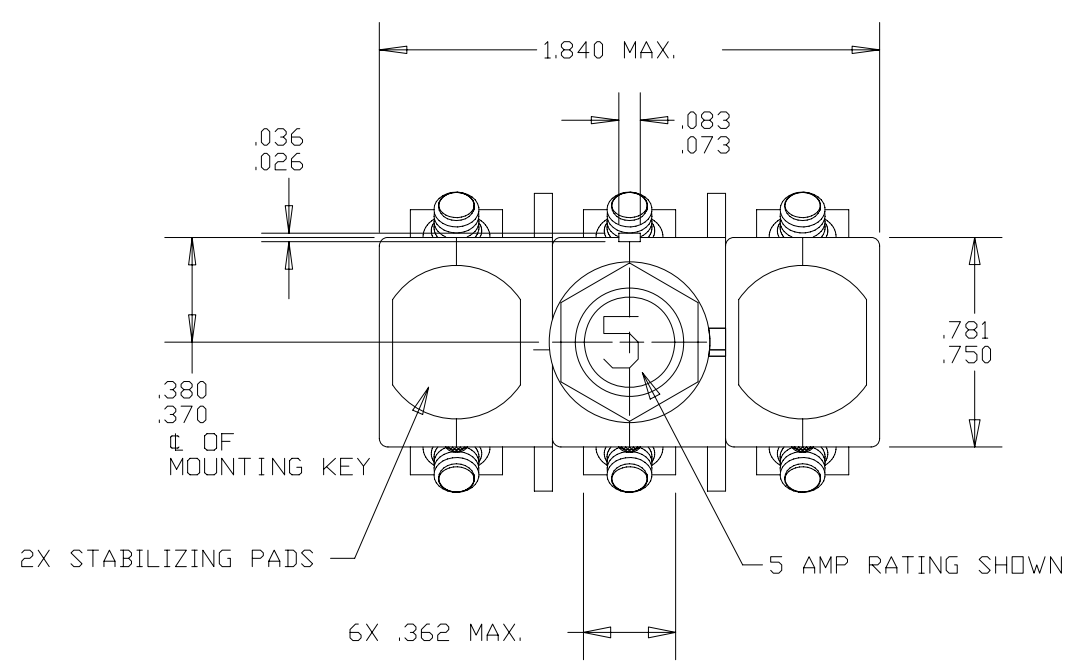


Property of
Sensata Technologies

ZONE	REV.	REVISION DESCRIPTION	ECN NO.	DATE
C2 A3	AL	REMOVED PMA APPROVED MARKING ON PART & COLUMN IN TABLE; GML	ECO-094918	18-DEC-2013



PERFORMANCE CHARACTERISTICS

DETAIL PERFORMANCE PER AS58091

OVERLOAD CYCLING	-----	100 CYCLES AT 200% RATING
VIBRATION	-----	10 G'S MINIMUM 50-500 Hz (SEE NOTE FOR ADDITIONAL SPEC.)
MECHANICAL SHOCK	-----	50 G'S
ACCELERATION	-----	10 G'S
SAND AND DUST	-----	12 HOURS
CORROSION	-----	SALT SPRAY 50 HOURS
HUMIDITY	-----	10 DAYS
EXPLOSION PROOF	-----	WHILE INTERRUPTING RUPTURE CURRENTS

ENDURANCE:

120 VAC	400 HZ INDUCTIVE	2500 CYCLES
MECHANICAL	400 HZ RESISTIVE NO LOAD	5000 CYCLES 5000 CYCLES

SINGLE * OR THREE PHASE CALIBRATION: 2 AMP THRU 20 AMP

	MIN. ULT. TRIP	MAX. ULT. TRIP	200%	500%	1000%
+25°C, +77°F	110% RATING	145% RATING	4-20 SEC.	.40-2.0 SEC.	.10-.53 SEC.
-55°C, -65°F	110% RATING	165% RATING	6-40 SEC.	.55-3.5 SEC.	.15-.80 SEC.
+71°C, +160°F	100% RATING	145% RATING	3-20 SEC.	.33-1.7 SEC.	.08-.40 SEC.

RUPTURE: 2 AMP THRU 20 AMP 205 VAC, 400 HZ 2800 AMPS

MAXIMUM OPERATING FORCES

PULL OUT	-----	12 LBS. MAX. / 2 LBS. MIN.
RESET	-----	12 LBS. MAX. / 2 LBS. MIN.

OPERATING ALTITUDE: 70,000 FT. (21,000 M)

WEIGHT: 65.0 GRAMS MAX. (.143 LBS.)

VOLTAGE DROP:

2 AMP	-----	0.70 VOLTS MAX.
2.5 AMP	-----	0.50 VOLTS MAX.
3 AMP	-----	0.40 VOLTS MAX.
4 AMP	-----	0.37 VOLTS MAX.
5 AMP	-----	0.35 VOLTS MAX.
7.5 AMP	-----	0.192 VOLTS MAX.
8 AMP	-----	0.185 VOLTS MAX.
10 AMP	-----	0.176 VOLTS MAX.
15 AMP	-----	0.176 VOLTS MAX.
20 AMP	-----	0.176 VOLTS MAX.

* SINGLE PHASE MAXIMUM ULTIMATE TRIP VALUES APPLY WITH OTHER TWO PHASES CARRYING 100% OF RATED CURRENT

- NOTES:
- EPOXY SURFACES ARE NON-DIMENSIONED, ENVELOPE DRAWING DIMENSIONS DO NOT APPLY TO THESE PROJECTED EPOXY SURFACES.
 - TERMINAL AND MOUNTING HARDWARE MAY BE PACKAGED RATHER THAN INSTALLED.
 - COUNTRY OF ORIGIN IS SHOWN FOR ILLUSTRATION PURPOSES ONLY. COUNTRY OF ORIGIN TO BE IDENTIFIED AS REQUIRED.
 - DATE CODE PER 10588-285.
 - ALL MARKINGS TO BE MADE IN APPROXIMATE POSITIONS SHOWN WITH BLACK INK PER 12506-70, 3/32 HIGH CHARACTERS.
 - VIBRATION, RANDOM: 9dB/OCT. RISE, 5-15 Hz; PSD OF 0.2(G / Hz) FROM 15 TO 100 Hz; 9dB/OCT. FALL 100 TO 2000 Hz.

6TC6-20	
6TC6-15	BACC18AC15
6TC6-10	BACC18AC10
6TC6-8	BACC18AC8
6TC6-7 1/2	BACC18AC7
6TC6-5	BACC18AC5
6TC6-4	BACC18AC4
6TC6-3	BACC18AC3
6TC6-2 1/2	BACC18AC2
6TC6-2	BACC18AC02
SENSATA PART NO.	CUSTOMER PART NO.
MARKING REQUIREMENTS	

FOR REFERENCE ONLY, CHECK LATEST REVISION BEFORE USE. PARTS MADE TO THIS PRINT MUST CONFORM TO E9898 REV. E		 529 PLEASANT STREET P.O. BOX 2964 ATTLEBORO, MA 02703	
DRAWN C. FLEURANT DATE 04-APR-1994	<small>NEITHER THIS PRINT NOR THE INFORMATION CONTAINED HEREON IS TO BE USED AGAINST THE INTERESTS OF SENSATA TECHNOLOGIES, INC. OR AGAINST THE INTERESTS OF ANY OF ITS AFFILIATED COMPANIES OR WHOLLY OWNED SUBSIDIARIES</small>	TITLE PART NO. 6TC6 AMBIENT COMPENSATED CIRCUIT BREAKER PUSH-PULL, TRIP FREE ENVELOPE DRAWING	
ENGINEER J. FOWLER DATE 04-APR-1994	UNLESS OTHERWISE SPECIFIED DIMENSIONS ARE IN INCHES TOLERANCES DECIMALS ANGLES	DWG NO.	REV.
APPROVED	THIRD ANGLE PROJECTION	SIZE C	AL
DATE	DO NOT SCALE DRAWING	SCALE	SHEET 1 OF 1
APPROVED	DEVICE: 6TC	AUTOCAD	PROJECT: 1112
DATE			