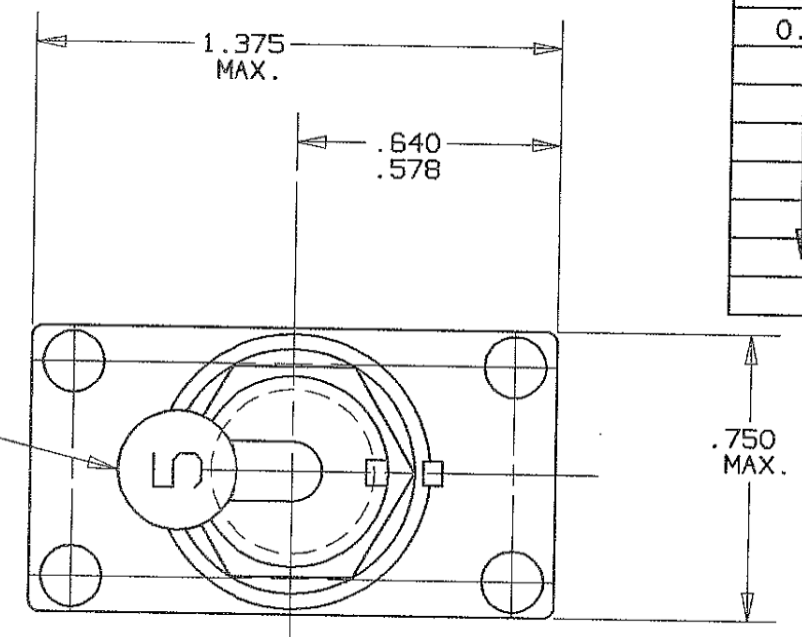


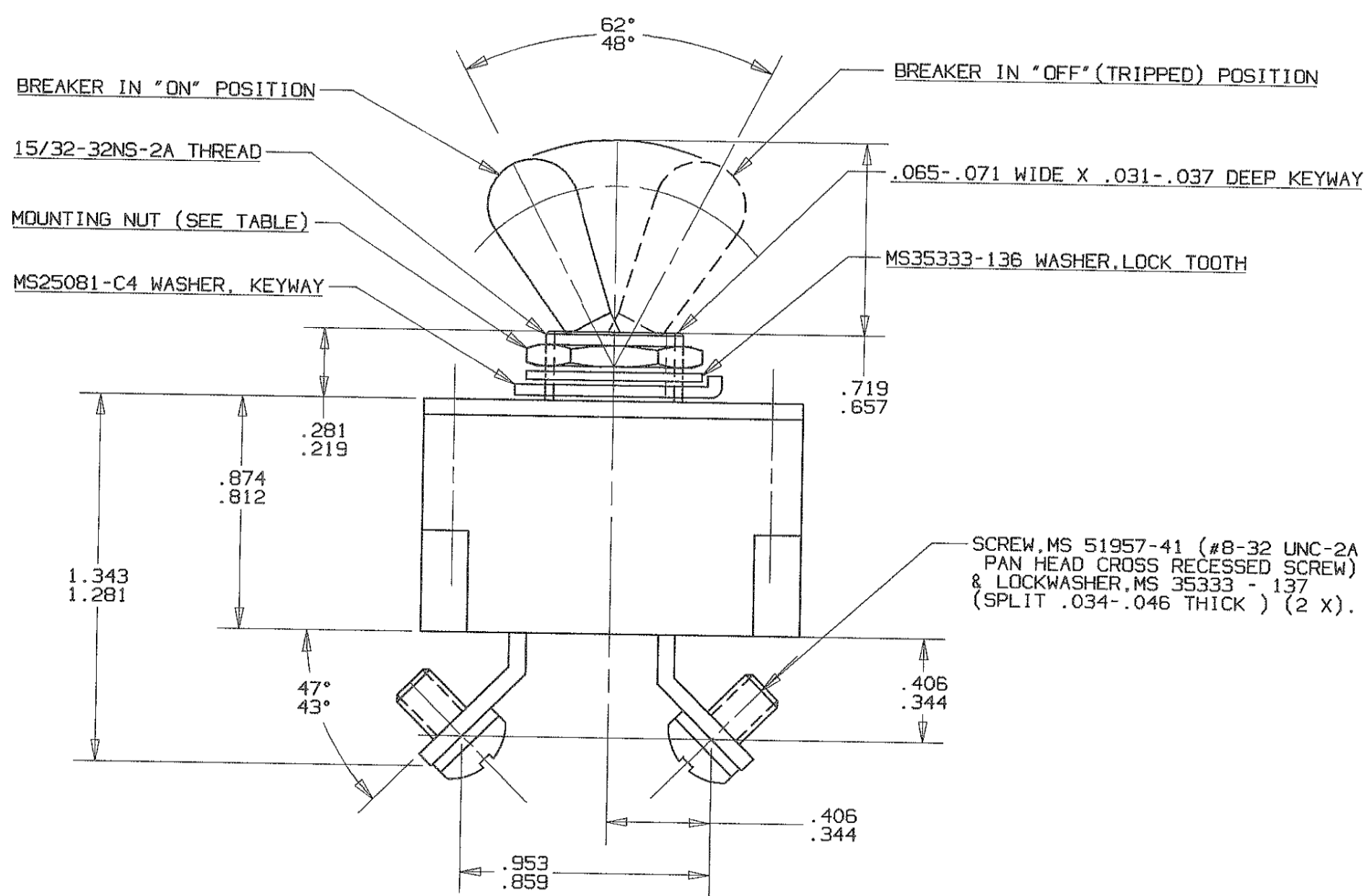
Property of
Sensata Technologies

MAXIMUM VOLTAGE DROP	% RATED CURRENT			MOUNTING NUT	PART NO.	AMP. RATING
	200	400	600			
0.75	40-120	3-26	1-12	TIN PLATED BRASS	7270-5- 3	3
0.65	40-100	3-22	1-10	TIN PLATED BRASS	7270-5- 5	5
0.50	10-70	.75-7.0	.25-2.5	TIN PLATED BRASS	7270-5- 7 1/2	7 1/2
				TIN PLATED BRASS	7270-5-10	10
				TIN PLATED BRASS	7270-5-15	15
				TIN PLATED BRASS	7270-5-20	20
				TIN PLATED BRASS	7270-5-25	25
				TIN PLATED BRASS	7270-5-30	30
				TIN PLATED BRASS	7270-5-35	35

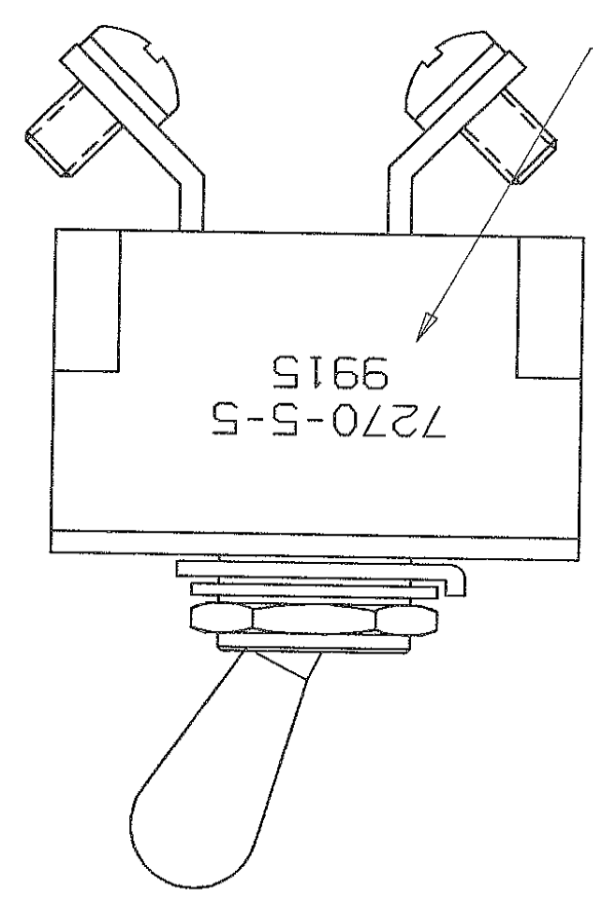
REVISIONS						
ZONE	LTR	DESCRIPTION	PROJ.	DATE	APPROVED	
	N	MOVED CODE STAMP TO FAR SIDE	438	6-13-00	S.J.B.	



AMPERE RATING
(7270-5-5 SHOWN)



SCREW, MS 51957-41 (#8-32 UNC-2A PAN HEAD CROSS RECESSED SCREW) & LOCKWASHER, MS 35333 - 137 (SPLIT .034-.046 THICK) (2 X).



CODE PART NO. & MS PART NO. PER TABLE ABOVE. DATE CODE PER 10588-285

PERFORMANCE CHARACTERISTICS
(DETAIL PERFORMANCE PER MIL-C-5809)

OVERLOAD CYCLING-----100 CYCLES AT 200% RATING
 SINUSOIDAL VIBRATION-----10 G'S 50-500 HZ
 MECHANICAL SHOCK-----30 G'S AT 11.0 MILLISECOND DURATION
 ACCELERATION-----10 G'S MINIMUM
 SAND & DUST-----12 HOURS
 CORROSION-----SALT SPRAY 48 HOURS
 HUMIDITY-----10 DAYS
 EXPLOSION PROOF-----WHILE INTERRUPTING RUPTURE CURRENTS

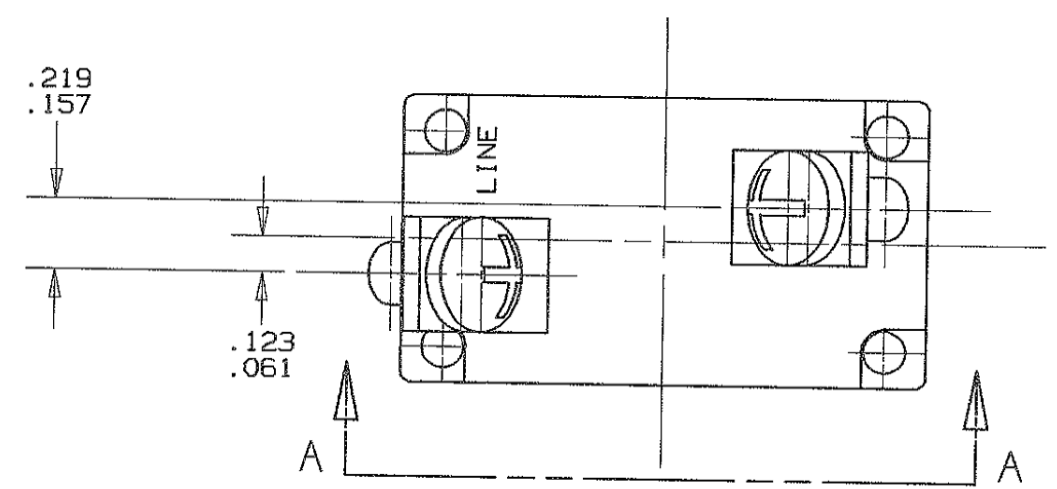
MAXIMUM OPERATING ALTITUDE: 70,000 FT.
 WEIGHT: 39.0 GRAMS MAX.
 MAXIMUM OPERATING FORCES:
 PULL OUT-----6 LBS. MAX.
 RESET-----6 LBS. MAX.

CURRENT INTERRUPTION CAPACITY: 4,000 A @ 30 VDC.
 3,500 A @ 120 VAC, 400HZ.

ENDURANCE:
 120 VAC-----400 HZ INDUCTIVE -----5000 CYCLES
 120 VAC-----400 HZ RESISTIVE -----5000 CYCLES
 30 VDC-----INDUCTIVE -----200 CYCLES
 30 VDC-----RESISTIVE -----5000 CYCLES
 NO LOAD-----MECHANICAL -----10000 CYCLES

CALIBRATION:
 AMBIENT TEMP. HOLD TRIP
 +25°C 115% RATING 145% RATING
 -40°C 138% RATING 175% RATING
 +71°C 80% RATING 125% RATING

VIEW A-A



NOTES:
 1. EPOXY SURFACES ARE NON-DIMENSIONED. ENVELOPE DRAWING DIMENSIONS DO NOT APPLY TO THESE PROJECTED EPOXY SURFACES.

SUPERSEDES 7270-5 REV "M" DATED 5-13-99

UNLESS OTHERWISE SPECIFIED DIMENSIONS ARE IN INCHES	DRAWN O. LARSEN	DATE 5-3-95	TEXAS INSTRUMENTS ATTLEBORO, MASSACHUSETTS 02703	KLIXON CONTROL PRODUCTS DIVISION
TOLERANCE ON FRACTIONS DECIMALS ANGLES	ENGINEER M. J. LAVADO	5-3-95		
	APPROVED H. HIRSBRUNNER	5-16-89	TITLE 7270-5 TYPE TRIP FREE SWITCH TYPE CIRCUIT BREAKER ENVELOPE DRAWING	
MATERIAL	APPROVED PETER G. BERG	5-3-95	SIZE C	CODE IDENT NO. 82647
SIGNATURES ON FILE. REFER TO ELECTRONIC CHANGE NOTICE.			SCALE: 2X	7270-5

Q3 P18

SHEET 1 OF 1