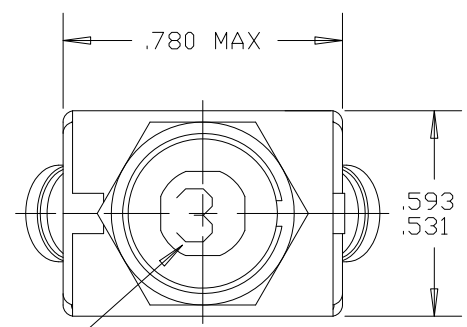
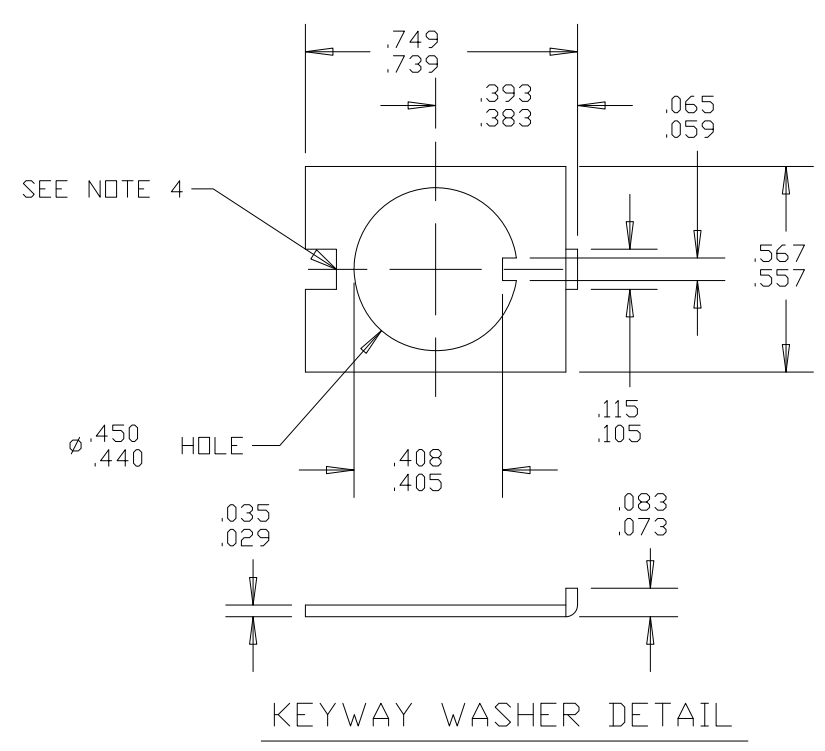
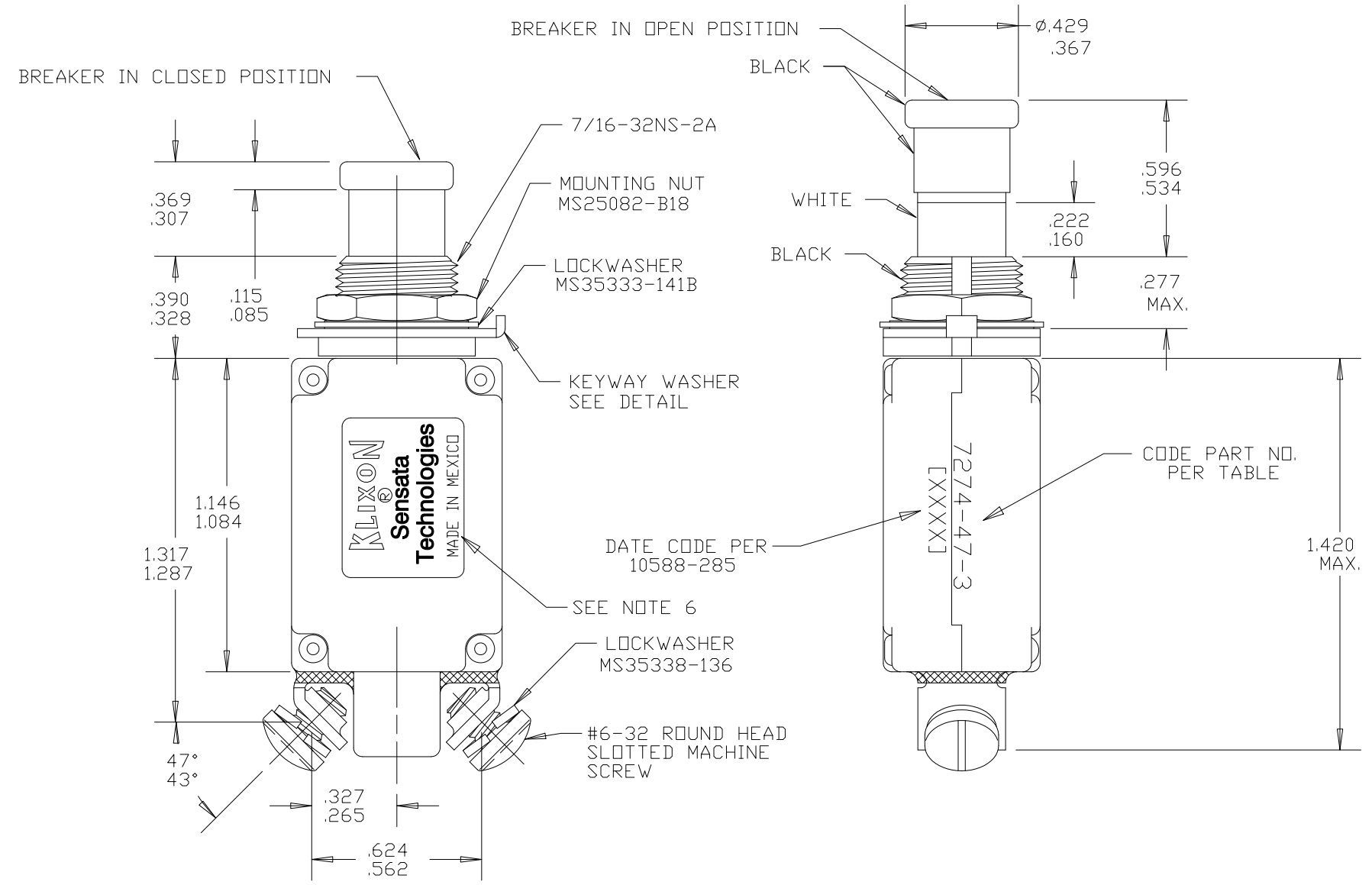


Property of  
Sensata Technologies

ZONE	REV.	REVISION DESCRIPTION	ECN NO.	DATE
C4	N	.780 MAX WAS .781/.719; PD	ECO-111344	25-FEB-2015



3 AMP RATING SHOWN



PERFORMANCE CHARACTERISTICS

(DETAIL PERFORMANCE PER MIL-C-5809)

- OVERLOAD CYCLING ----- 100 CYCLES AT 200% RATING
- SINUSOIDAL VIBRATION ----- 10 G'S 50-500 HZ
- MECHANICAL SHOCK ----- 30 G'S AT 11.5 MILLISECOND DURATION
- ACCELERATION ----- 10 G'S MINIMUM
- SAND AND DUST ----- 12 HOURS
- CORROSION ----- SALT SPRAY 48 HOURS
- HUMIDITY ----- 10 DAYS
- EXPLOSION PROOF ----- WHILE INTERRUPTING RUPTURE CURRENTS
- MOUNTING NUT TORQUE ----- 40 L.B.-IN. MAX.

MAXIMUM OPERATING ALTITUDE: 80,000 FT. (24,384 M)

WEIGHT: 28.0 GRAMS MAX.

MAXIMUM OPERATING FORCES:  
 PULL OUT ----- 5 LBS. MAX. (22.2 N)  
 RESET ----- 5 LBS. MAX. (22.2 N)

ENDURANCE:  
 120 VAC ----- 400 HZ INDUCTIVE ----- 2500 CYCLES  
 120 VAC ----- 400 HZ RESISTIVE ----- 5000 CYCLES  
 30 VDC ----- INDUCTIVE ----- 2500 CYCLES  
 30 VDC ----- RESISTIVE ----- 5000 CYCLES  
 NO LOAD ----- MECHANICAL ----- 5000 CYCLES

AUXILIARY CIRCUIT ENDURANCE:  
 5 - 120 VAC ----- INDUCTIVE 2 AMP 5000 CYCLES  
 RESISTIVE 3 AMP 5000 CYCLES  
 5 - 30 VAC ----- INDUCTIVE 3 AMP 5000 CYCLES  
 RESISTIVE 5 AMP 5000 CYCLES

CALIBRATION:

AMBIENT TEMP.	HOLD	TRIP	200%	500%	1000%
+25°C (+77°F)	115% RATING	150% RATING	2-20 SEC.	.16-1.2 SEC.	.046-.28 SEC.
-55°C (-67°F)	135% RATING	180% RATING			
+71°C (+160°F)	90% RATING	130% RATING			

PART NO.	AMP RATING	MAXIMUM VOLTAGE DRDP	CURRENT INTERRUPTING CAPACITY	
			120 VAC, 400 HZ	28 VDC
7274-47-1/2	1/2	2.00	UNLIMITED	UNLIMITED
7274-47-3/4	3/4	1.45	UNLIMITED	UNLIMITED
7274-47-1	1	1.10	UNLIMITED	UNLIMITED
7274-47-1 1/2	1 1/2	0.75	UNLIMITED	UNLIMITED
7274-47-2	2	0.70	800 AMPS	UNLIMITED
7274-47-2 1/2	2 1/2	0.50	800 AMPS	UNLIMITED
7274-47-3	3	0.33	800 AMPS	UNLIMITED
7274-47-4	4	0.30	800 AMPS	UNLIMITED
7274-47-5	5	0.25	800 AMPS	UNLIMITED
7274-47-7 1/2	7 1/2	0.20	500 AMPS	2000 AMPS
7274-47-10	10	0.15	500 AMPS	2000 AMPS

NOTES:

1. ALL MOUNTING HARDWARE HAS A DULL BLACK FINISH.
2. CIRCUIT BREAKERS ARE SUITABLE FOR MOUNTING IN A 1/8" THICK PANEL OR LESS.
3. EPOXY SURFACES ARE NON-DIMENSIONED, ENVELOPE DIMENSIONS DO NOT APPLY TO THESE PROJECTED EPOXY SURFACES.
4. NON FUNCTIONAL NOTCH ON THE BACK OF THE KEYWAY WASHER IS OPTIONAL.
5. TERMINAL AND MOUNTING HARDWARE MAY BE PACKAGED RATHER THAN INSTALLED.
6. COUNTRY OF ORIGIN IS SHOWN FOR ILLUSTRATION PURPOSES ONLY. COUNTRY OF ORIGIN TO BE IDENTIFIED AS REQUIRED.

FOR REFERENCE ONLY, CHECK LATEST REVISION BEFORE USE. PARTS MADE TO THIS PRINT MUST CONFORM TO E9898 REV. E

DRAWN <b>J.D. MAYALL</b> DATE 16-JAN-1995 ENGINEER <b>K.B. GASSER</b> DATE 16-JAN-1995 APPROVED <b>D.R. PETRIE</b> DATE 16-JAN-1995 APPROVED DATE	SENSATA TECHNOLOGIES PROPRIETARY AND CONFIDENTIAL. NEITHER THIS PRINT NOR THE INFORMATION CONTAINED HEREON IS TO BE USED AGAINST THE INTERESTS OF SENSATA TECHNOLOGIES OR AGAINST THE INTERESTS OF ANY OF ITS AFFILIATED COMPANIES OR WHOLLY OWNED SUBSIDIARIES. UNLESS OTHERWISE SPECIFIED DIMENSIONS ARE IN INCHES TOLERANCES DECIMALS      ANGLES	 529 PLEASANT STREET P.O. BOX 2964 ATTLEBORO, MA 02703 TITLE <b>7274-47 STYLE CIRCUIT BREAKER          PUSH-PULL, TRIP FREE          ENVELOPE DRAWING</b> SIZE DWG NO. <b>7274-47</b> REV. <b>N</b>
DO NOT SCALE DRAWING THIRD ANGLE PROJECTION	SCALE 1:1 AUTOCAD SHEET 1 OF 1	PROJECT:3457 1