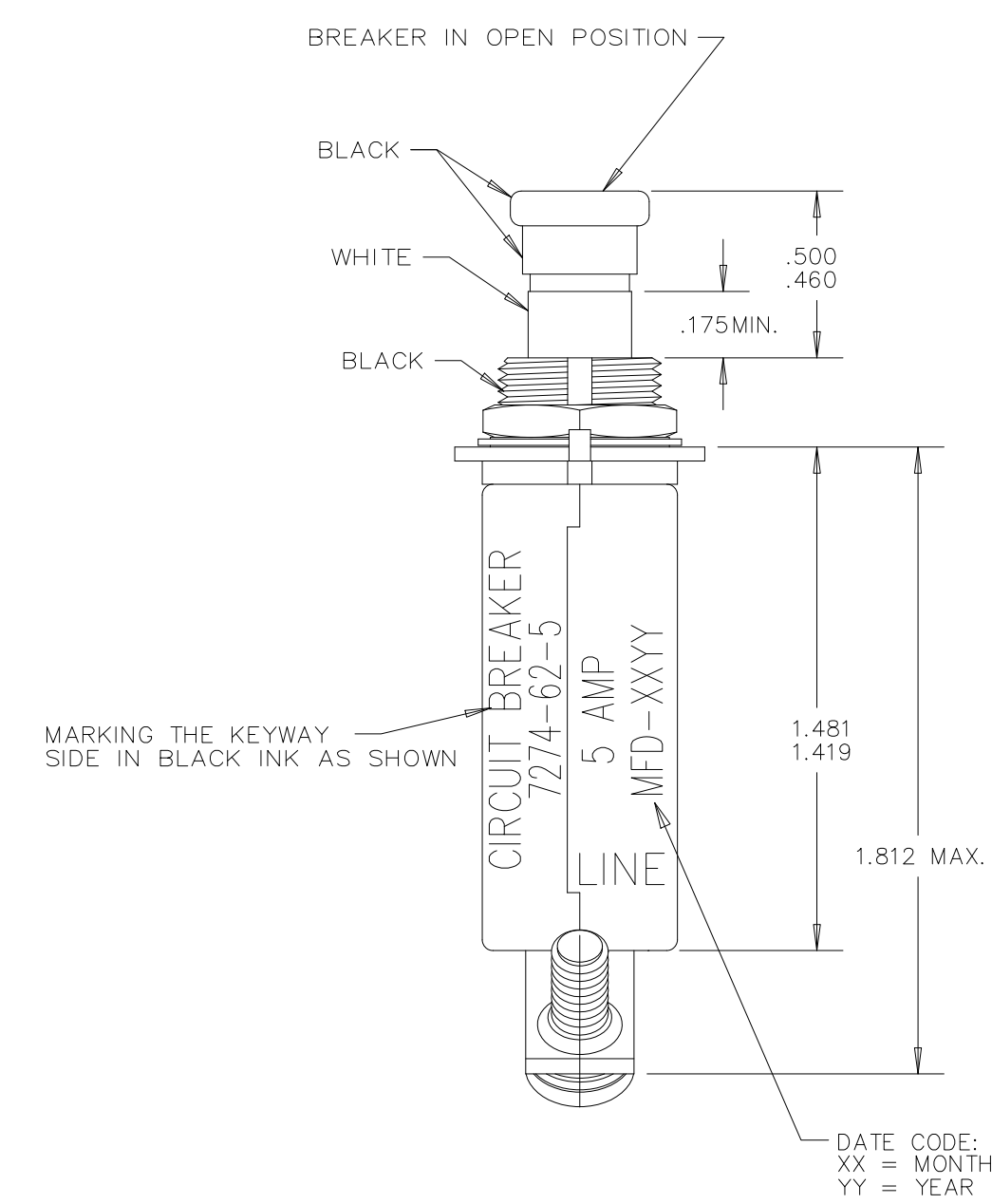
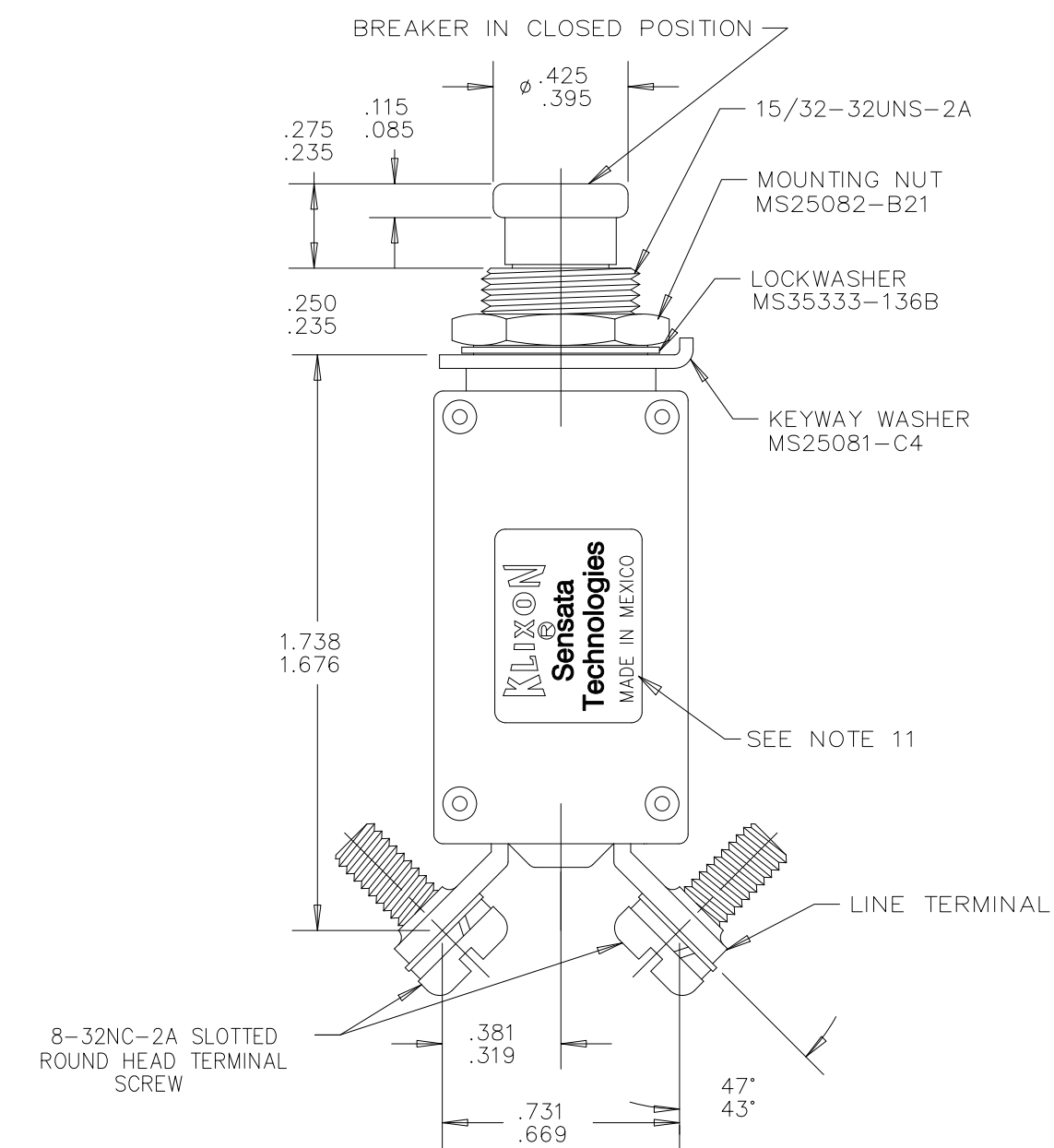
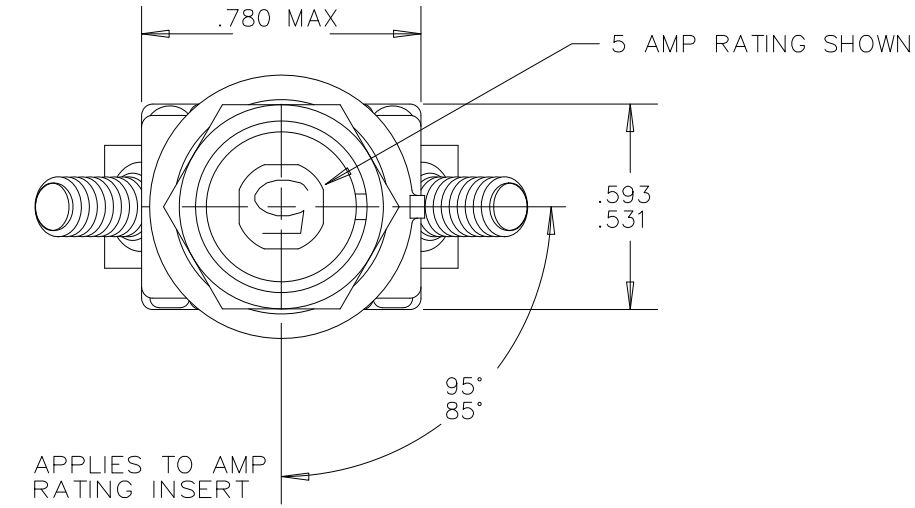


Property of
Sensata Technologies

ZONE	REV.	REVISION DESCRIPTION	ECN NO.	DATE
D7	AE	.780 MAX WAS .781/.719; PD	ECO-111344	25-FEB-2015



PERFORMANCE CHARACTERISTICS (DETAIL PERFORMANCE PER MIL-C-5809 TYPE I)

OVERLOAD CYCLING ----- 100 CYCLES AT 200% RATING
 SINUSOIDAL VIBRATION ----- 15 G'S 10-2000 HZ WITH 100% RATED LOAD
 MECHANICAL SHOCK ----- 50 G'S AT 11.0 MILLISECOND DURATION
 ACCELERATION ----- 10 G'S MINIMUM
 SAND AND DUST ----- 12 HOURS
 CORROSION ----- SALT SPRAY 48 HOURS
 HUMIDITY ----- 10 DAYS
 EXPLOSION PROOF ----- WHILE INTERRUPTING RUPTURE CURRENTS
 MOUNTING NUT TORQUE ----- 40 LB.-IN. MAX.
 PUSHBUTTON STRENGTH ----- 25 LBS NORMAL TO DIRECTION OF BUTTON TRAVEL
 THE BREAKER SHALL NOT TRIP WHILE CARRYING 100% RATED LOAD FOR ONE HOUR MINIMUM
 WHEN A 5 LB RESET LOAD IS THEN APPLIED AXIALLY TO THE PUSHBUTTON INDICATOR.

MAXIMUM OPERATING ALTITUDE: 80,000 FT. (24,384 M)
 WEIGHT: 33.0 GRAMS MAX.

MAXIMUM OPERATING FORCES:
 PULL OUT ----- 5 LBS. MAX. (22.2 N)
 RESET ----- 5 LBS. MAX. (22.2 N)

ENDURANCE:
 120 VAC ----- 400 HZ INDUCTIVE ----- 2500 CYCLES
 120 VAC ----- 400 HZ RESISTIVE ----- 5000 CYCLES
 30 VDC ----- INDUCTIVE ----- 2500 CYCLES
 30 VDC ----- RESISTIVE ----- 5000 CYCLES
 NO LOAD ----- MECHANICAL ----- 20,000 CYCLES

CALIBRATION:
 AMBIENT TEMP. MIN.ULT.TRIP MAX.ULT.TRIP 200% 500% 1000%
 +25°C (+77°F) 115% RATING 145% RATING 2-20 SEC. .16-1.0 SEC. .046-.28 SEC.
 1 HR. MIN. 1 HR. MAX.

- NOTES:
- EFFECTIVE DECEMBER 1978 PUSHBUTTON WILL BE OF ONE PIECE CONSTRUCTION.
 - EFFECTIVE OCTOBER 1978 THE DAPPED THERMAL LATCH WILL BE USED.
 - ALL MOUNTING HARDWARE HAS A DULL BLACK FINISH.
 - CIRCUIT BREAKERS ARE SUITABLE FOR MOUNTING IN A 1/8" THICK PANEL OR LESS.
 - EPOXY SURFACES ARE NON-DIMENSIONED, ENVELOPE DIMENSIONS DO NOT APPLY TO THESE PROJECTED EPOXY SURFACES.
 - THE BREAKER SHALL BE RESETTABLE WITHIN ONE MINUTE AFTER TRIPPING AT 200% RATED CURRENT AT 77°F.
 - CHANGES TO THIS DRAWING TO BE SUBMITTED TO DOUGLAS CORP. FOR APPROVAL AND IMPLEMENTATION DATES WILL BE CONTROLLED BY PRODUCT DATE CODE.
 - ALL MARKINGS AND CODINGS SHALL BE SKYDROL RESISTANT.
 - PACKAGE AND MARK AS FOLLOWS:
 - USE POLYETHYLENE BAG (.002" THICK, 4"WIDE, 6" LONG) THAT IS SEAMED 2" FROM THE BOTTOM, BOTH ENDS OPEN.
 - PLACE MOUNTING AND TERMINAL HARDWARE (LISTED BELOW) SHOWN ATTACHED TO DEVICE IN BOTTOM 2" SECTION OF THE BAG THEN HEAT SEAL.

1PC.	71213-10	GUIDE WASHER
1PC.	71212-6	MOUNTING NUT
1PC.	17417-12	LOCKWASHER
2PC.	14061-3	SCREW & LOCKWASHER ASM.
 - PLACE CIRCUIT BREAKER (MINUS MOUNTING HARDWARE AND TERMINAL HARDWARE) IN TOP 4" SECTION OF BAG. (THEN HEAT SEAL).
 - MARK EACH BAG WITH THE DOUGLAS PART NO. (5D0001-AMP) AND SENSATA TECHNOLOGIES EQUIVALENT PART NUMBER 7274-62-AMP.
 - TERMINAL AND MOUNTING HARDWARE MAY BE PACKAGE RATHER THAN INSTALLED.
 - COUNTRY OF ORIGIN IS SHOWN FOR ILLUSTRATION PURPOSES ONLY. COUNTRY OF ORIGIN TO BE IDENTIFIED AS REQUIRED.
 - SENSATA P/N FOR 7274-62-71/2 SHALL BE MARKED AS : 7274-62-7K5

PART NO.	AMP RATING	MAXIMUM VOLTAGE DROP	CURRENT INTERRUPTING CAPACITY		CUSTOMER PART NO.
			120 VAC, 400 HZ	28 VDC	
7274-62-1/2	1/2	2.00	UNLIMITED	UNLIMITED	
7274-62-3/4	3/4	1.45	UNLIMITED	UNLIMITED	
7274-62-1	1	1.10	UNLIMITED	UNLIMITED	5D0001-1
7274-62-11/2	1 1/2	0.75	UNLIMITED	UNLIMITED	
7274-62-2	2	0.75	800 AMPS	UNLIMITED	5D0001-2
7274-62-21/2	2 1/2	0.70	800 AMPS	UNLIMITED	
7274-62-3	3	0.55	800 AMPS	UNLIMITED	5D0001-3
7274-62-4	4	0.45	800 AMPS	UNLIMITED	
7274-62-5	5	0.35	800 AMPS	UNLIMITED	5D0001-5
7274-62-71/2	7 1/2	0.30	500 AMPS	2000 AMPS	5D0001-7K5
7274-62-10	10	0.28	500 AMPS	2000 AMPS	5D0001-10

SEE NOTE 13

FOR REFERENCE ONLY, CHECK LATEST REVISION BEFORE USE. PARTS MADE TO THIS PRINT MUST CONFORM TO E9898 REV. E

DRAWN J.D.MAYALL
 DATE 03-JUN-1994

ENGINEER K.B. GASSER
 DATE 03-JUN-1994
 APPROVED

DATE APPROVED

DO NOT SCALE DRAWING

THIRD ANGLE PROJECTION

SENSATA TECHNOLOGIES PROPRIETARY AND CONFIDENTIAL. NEITHER THIS PRINT NOR THE INFORMATION CONTAINED HEREON IS TO BE USED AGAINST THE INTERESTS OF SENSATA TECHNOLOGIES OR AGAINST THE INTERESTS OF ANY OF ITS AFFILIATED COMPANIES OR WHOLLY OWNED SUBSIDIARIES.

INTERPRET DIMENSIONING AND TOLERANCING PER ASME Y14.5-2009, UNLESS OTHERWISE SPECIFIED. DIMENSIONS ARE IN INCHES. TOLERANCES DECIMALS ANGLES

TITLE 7274 STYLE CIRCUIT BREAKER PUSH PULL-TRIP FREE ENVELOPE DRAWING

SIZE DWG NO. D 7274-62
 SCALE 1:1 AUTOCAD SHEET 1 OF 1

529 PLEASANT STREET
 P.O. BOX 2964
 ATTLEBORO, MA 02703

REV. AE