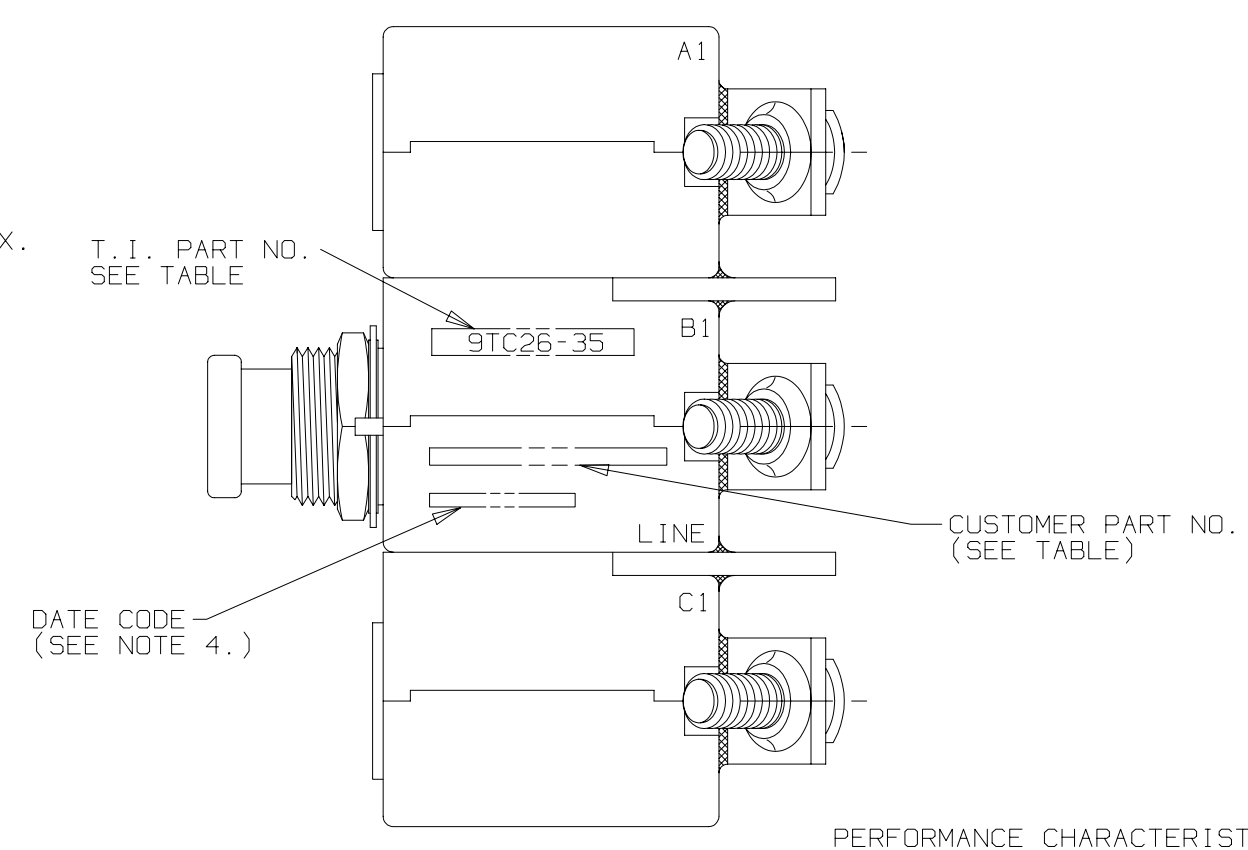
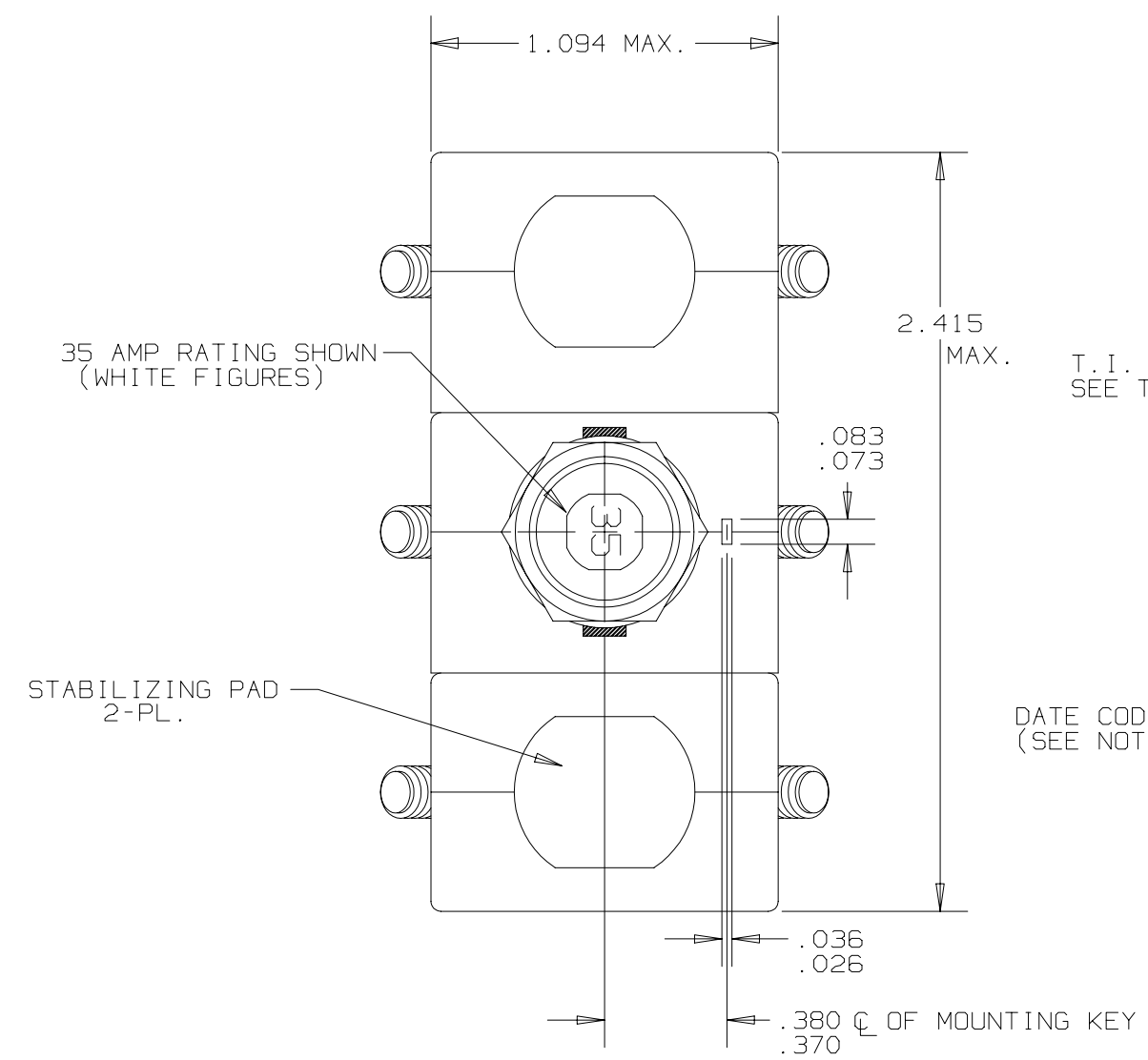


Property of
Sensata Technologies

REVISIONS						
ZONE	LTR	9TC	DESCRIPTION	PROJ. #3012	DATE	APPROVED
	M		ADDED ALL CODING AND MARKING INFORMATION: REDRAWN IN CADRA: ECN0025548, DP		12-6-05	D.M.



PERFORMANCE CHARACTERISTICS

DETAIL PERFORMANCE PER MIL-C-5809

OVERLOAD CYCLING	100 CYCLES AT 200% RATING
MECHANICAL SHOCK	25 G'S
ACCELERATION	10 G'S
SAND AND DUST	12 HOURS
CORROSION	SALT SPRAY 50 HOURS
HUMIDITY	10 DAYS
EXPLOSION PROOF	WHILE INTERRUPTING RUPTURE CURRENTS

ENDURANCE:	120 VAC	400 CPS INDUCTIVE	2500 CYCLES
		400 CPS RESISTIVE	5000 CYCLES
		NO LOAD	5000 CYCLES

VIBRATION: PER LOCKHEED DOCUMENT LS10159.

SINGLE * OR THREE PHASE CALIBRATION:		1 AMP THRU 35 AMP		200%		500%		1000%	
		MIN. ULT. TRIP	MAX. ULT. TRIP						
+25°C. +77°F	110% RATING		140% RATING	4.0-20 SEC.	.40-2.0 SEC.	.10-.53 SEC.			
-54°C. -65°F	110% RATING		160% RATING	6.0-40 SEC.	.50-3.0 SEC.	.15-.80 SEC.			
+71°C. +160°F	100% RATING		140% RATING	2.5-15 SEC.	.25-1.1 SEC.	.06-.30 SEC.			

RUPTURE:	1 AMP THRU 35 AMP	120 VAC, 400 CPS	2000 AMPS
----------	-------------------	------------------	-----------

MAXIMUM OPERATING FORCES	
PULL OUT	12 LBS. MAX.
RESET	12 LBS. MAX.

OPERATING ALTITUDE: 70,000 FT.

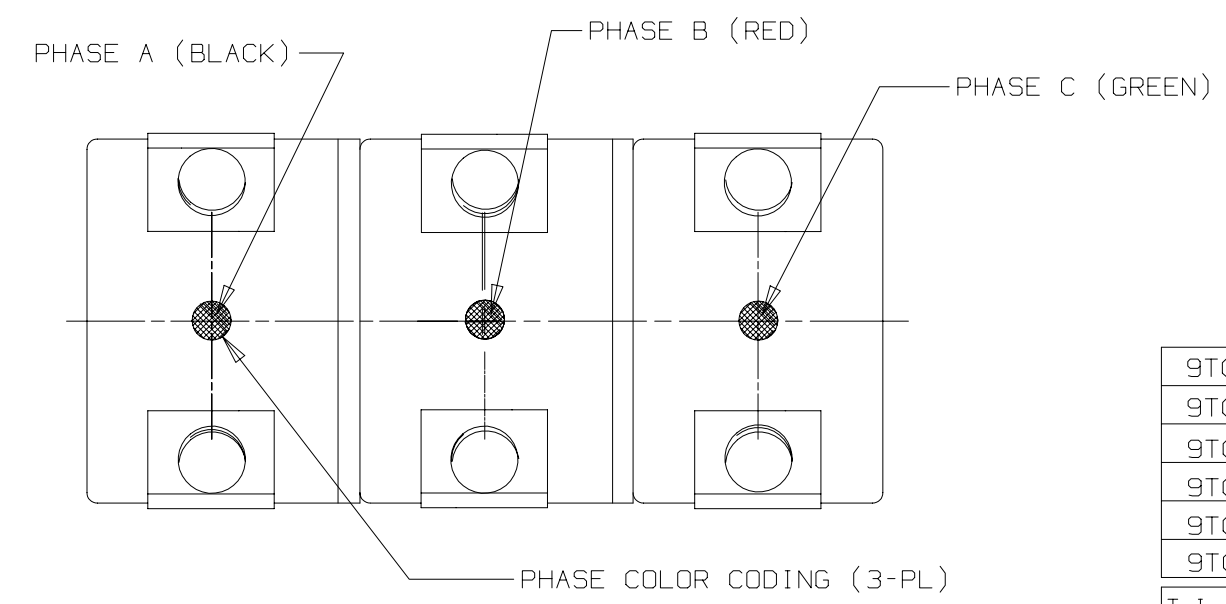
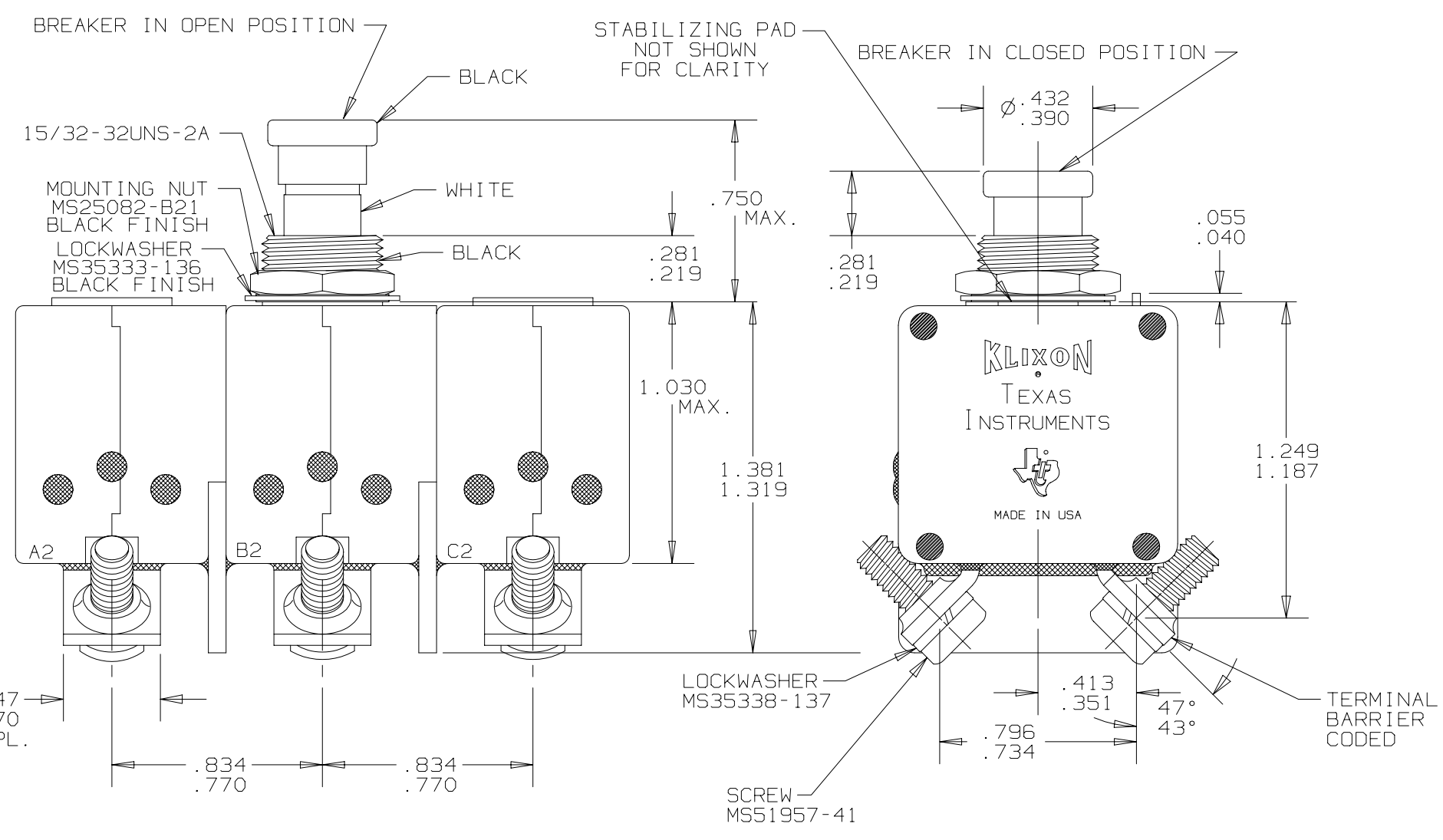
WEIGHT: 110.0 GRAMS MAX. (0.242 LBS.)

COORDINATION: PER SPECIFICATION 12506-62-1

* SINGLE PHASE MAX. ULT. TRIP VALUES APPLY WITH OTHER TWO PHASES CARRYING 100% OF RATED CURRENT

NOTES:

- EPOXY SURFACES ARE NON-DIMENSIONED. ENVELOPE DRAWING DIMENSIONS DO NOT APPLY TO THESE PROJECTED EPOXY SURFACES.
- TERMINAL AND MOUNTING HARDWARE MAY BE PACKAGED RATHER THAN INSTALLED.
- COUNTRY OF ORGIN IS SHOWN FOR ILLUSTRATION PURPOSES ONLY. COUNTRY OF ORGIN TO BE IDENTIFIED AS REQUIRED.
- DATE CODE PER 10588-285.
- ALL MARKINGS TO BE MADE IN APPROXIMATE POSITIONS SHOWN, WITH BLACK INK PER 12506-70; 3/32 INCH HIGH CHARACTERS.



9TC	AMP RATING	MAX. VOLT. DROP	CUSTOMER PART NO.
9TC26-35	35	0.165	LS10159S35P
9TC26-30	30	0.165	LS10159S30P
9TC26-25	25	0.165	LS10159S25P
9TC26-20	20	0.165	LS10159S20P
9TC26-15	15	0.165	LS10159S15P
9TC26-1	1	0.715	LS10159S1P

T.I. PART NO. | AMP RATING | MAX. VOLT. DROP | CUSTOMER PART NO.
MARKING REQUIREMENTS

THIS DEVICE CONFORMS TO LOCKHEED SPECIFICATION LS10159P.

UNLESS OTHERWISE SPECIFIED DIMENSIONS ARE IN INCHES	BY J.A. MARTINS	DATE 8-7-70	P2 Q3-1 P18
TOLERANCE ON FRACTIONS DECIMALS ANGLES	CH. ENG.		
MATERIAL	APPROVED T. BERNARD	8-7-70	
TITLE PART NO. 9TC26 AMBIENT COMPENSATED CIRCUIT BREAKER PUSH-PULL, TRIP FREE ENVELOPE DRAWING		SIZE CODE IDENT NO. C 82647	9TC26
SHEET 1 OF 1			

